

PLEASE CHECK WWW.MOLEX.COM FOR LATEST PART INFORMATION

Part Number: **0008700012**
Status: **Active**
Overview: kk
Description: 3.96 and 5.08mm (.156 and .200") Pitch KK® Cat Ear Crimp Terminal, Female, 18-24 AWG, Reel

Documents:

Drawing (PDF)	Product Specification PS-5239-007 (PDF)
Product Specification PS-5167-001 (PDF)	Product Specification PS-5273-003 (PDF)
Product Specification PS-5167-002 (PDF)	Product Specification PS-5273-004 (PDF)
Product Specification PS-5239-002 (PDF)	Product Specification PS-5278-001 (PDF)
Product Specification PS-5239-003 (PDF)	Product Specification PS-5278-002 (PDF)
Product Specification PS-5239-004 (PDF)	Product Specification PS-5286-001 (PDF)
Product Specification PS-5239-005 (PDF)	Product Specification PS-5286-002 (PDF)
Product Specification PS-5239-006 (PDF)	RoHS Certificate of Compliance (PDF)

General

Product Family	Crimp Terminals
Series	<u>5167</u>
Crimp Quality Equipment	Yes
Overview	<u>kk</u>
Product Name	KK®

Physical

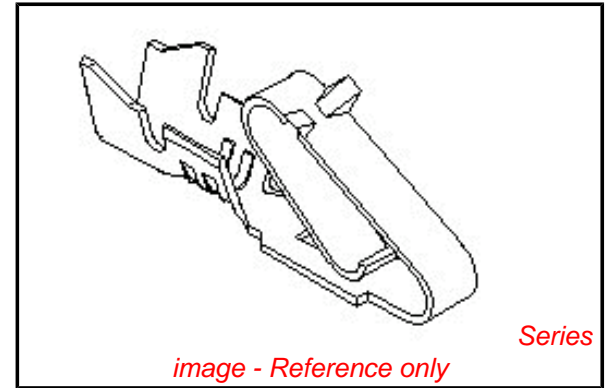
Gender	Female
Material - Metal	Brass
Material - Plating Mating	Tin
Material - Plating Termination	Tin
Packaging Type	Reel
Plating min: Mating (µin)	35
Plating min: Mating (µm)	0.88
Plating min: Termination (µin)	35
Plating min: Termination (µm)	0.88
Termination Interface: Style	Crimp or Compression
Wire Insulation Diameter	1.30-2.50mm (.051-.098")
Wire Size AWG	18, 20, 22, 24
Wire Size mm²	N/A

Material Info

Old Part Number	5167T
-----------------	-------

Reference - Drawing Numbers

Product Specification	PS-5167-001, PS-5167-002, PS-5239-002, PS-5239-003, PS-5239-004, PS-5239-005, PS-5239-006, PS-5239-007, PS-5273-003, PS-5273-004, PS-5278-001, PS-5278-002, PS-5286-001, PS-5286-002
Sales Drawing	SD-5167*



EU RoHS

ELV and RoHS Compliant
REACH SVHC Contains SVHC: No
Halogen-Free Status

China RoHS



Need more information on product environmental compliance?

Email productcompliance@molex.com
 For a multiple part number RoHS Certificate of Compliance, [click here](#)

Please visit the [Contact Us](#) section for any non-product compliance questions.

Search Parts in this Series

5167Series

Use With

5265 , 5239 , 5127 , 5258

Application Tooling | FAQ

Tooling specifications and manuals are found by selecting the products below. Crimp Height Specifications are then contained in the Application Tooling Specification document.

Global

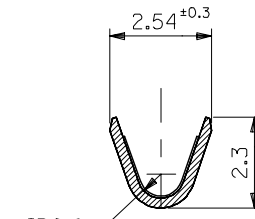
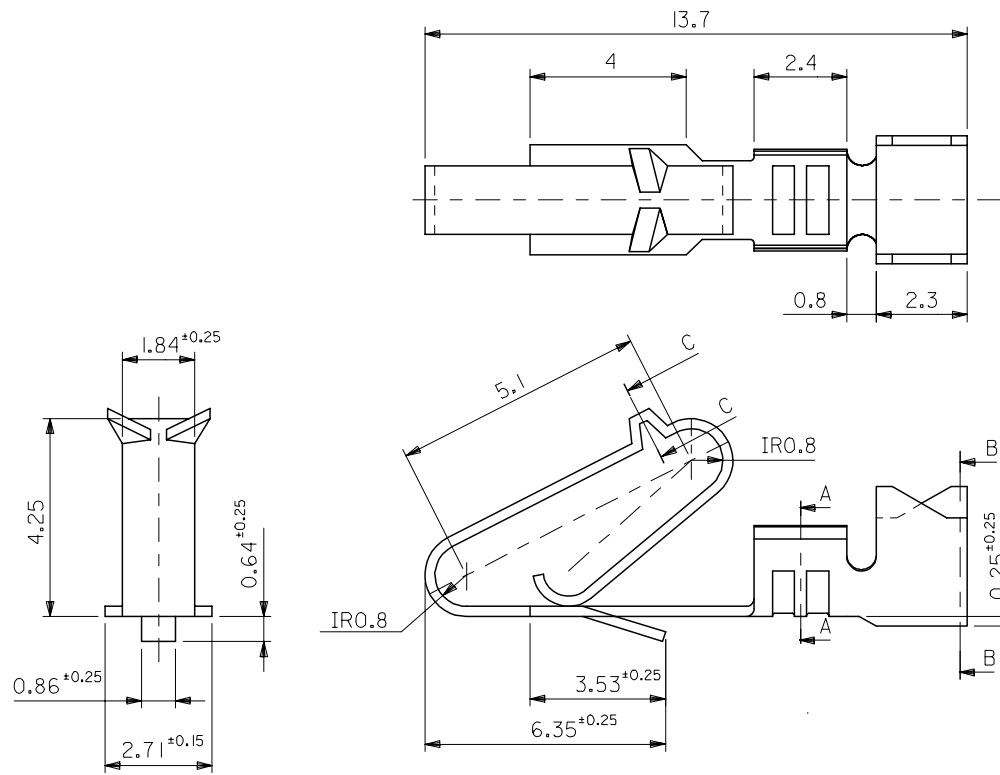
Description	Product #
Mini-Mac™ Applicator	<u>0638881200</u>
Hand Crimper	<u>0638117500</u>
Terminator Die	<u>0011402181</u>

Japan

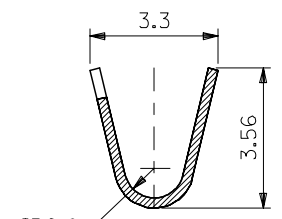
Description	Product #
Hand Extraction Tool	<u>0011260059</u>

PLEASE CHECK WWW.MOLEX.COM FOR LATEST PART INFORMATION

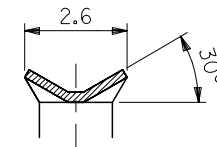
10 9 8 7 6 5 4 3 2 1



断面 A-A
SECTION A-A



断面 B-B
SECTION B-B



断面 C-C
SECTION C-C

注記
NOTE

一般公差 : ±0.4
 角度 : ±3°
 GENERAL TOLERANCES : ±0.4
 ANGLE : ±3°

MATERIAL
SEE CHART

磷青銅 PHOSPHOR BRONZE	錫メッキ TIN PLATING	08-70-1034	5167PBTL	バラ状 LOOSE
黄銅 BRASS	銅メッキ TIN OVER COPPER PLATING	08-70-0097	5167PBT	チェーン状 CHAIN
		08-70-0013	5167TL	バラ状 LOOSE
		08-70-0012	5167T	チェーン状 CHAIN
材料 MATERIAL	メッキ PLATE	EDP.NO.	ENG.NO.	形状 FORM

REVISED EC NO: J2005-0061 DRAWN: TANAKA CHKD: NUKITA APPR: NUKITA	GENERAL TOLERANCES (UNLESS SPECIFIED)		DIMENSION STYLE MM ONLY	SCALE 8:1	DESIGN UNITS METRIC	THIRD ANGLE PROJECTION
	10 UNDER	±0.2	DRAWN BY MHANAMUR	DATE 1996/05/23	TITLE STD KK CRIMP REC	
	10 OVER 30 UNDER	±0.25	CHECKED BY MFUKUSHI	DATE 1996/05/23	APPROVED BY MENOMOTO	
	30 OVER	±0.3	DATE 1996/05/23	MOLEX INCORPORATED		
	ANGULAR ±3°	DRAFT WHERE APPLICABLE MUST REMAIN WITHIN DIMENSIONS	MATERIAL NO. SEE CHART	DOCUMENT NO. SD-5167*	SHEET NO. 1 OF 1	
G	THIS DRAWING CONTAINS INFORMATION THAT IS PROPRIETARY TO MOLEX INCORPORATED AND SHOULD NOT BE USED WITHOUT WRITTEN PERMISSION					