

**PLEASE CHECK WWW.MOLEX.COM FOR LATEST PART INFORMATION**

**Part Number:** **0008700106**  
**Status:** **Active**  
**Description:** Board-In Crimp Terminal , Series 5298, Male, with Tin (Sn) Plated Brass Contact, 18-22 AWG, 1.70 to 3.05mm (.067 to .120") Insulation Diameter, Reel Packaged

**Documents:**

3D Model  
Drawing (PDF)  
Product Specification PS-5298-001 (PDF)  
Product Specification PS-5298-002 (PDF)  
RoHS Certificate of Compliance (PDF)

**Agency Certification**

CSA LR95446  
UL E29179

**General**

Product Family Crimp Terminals  
Series 5298  
Crimp Quality Equipment Yes  
Product Name Board-In Stand Alone Terminal

**Physical**

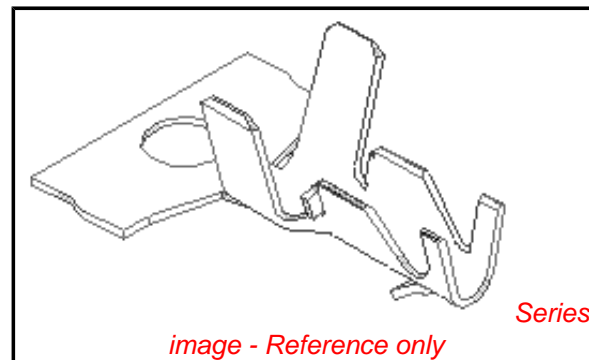
Flammability 94V-2  
Gender Male  
Material - Metal Brass  
Material - Plating Mating Tin  
Material - Plating Termination Tin  
Packaging Type Reel  
Plating min: Mating (µin) 35  
Plating min: Mating (µm) 0.88  
Plating min: Termination (µin) 35  
Plating min: Termination (µm) 0.88  
Termination Interface: Style Crimp or Compression  
Wire Insulation Diameter 1.70-3.05mm (.067-.120")  
Wire Size AWG 18, 20, 22  
Wire Size mm<sup>2</sup> N/A

**Material Info**

Old Part Number 5298T

**Reference - Drawing Numbers**

Product Specification PS-5298-001, PS-5298-002, RPS-5298-001  
Sales Drawing SD-5298-001



**EU RoHS**

**ELV and RoHS  
Compliant**  
**REACH SVHC  
Contains SVHC: No  
Halogen-Free  
Status  
Halogen-Free**

**China RoHS**



**Need more information on product environmental compliance?**

Email [productcompliance@molex.com](mailto:productcompliance@molex.com)  
For a multiple part number RoHS Certificate of Compliance, [click here](#)

Please visit the [Contact Us](#) section for any non-product compliance questions.

**Search Parts in this Series**

5298Series

**Application Tooling | FAQ**

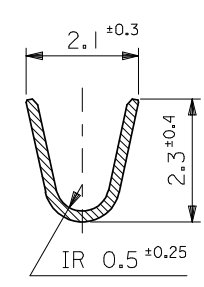
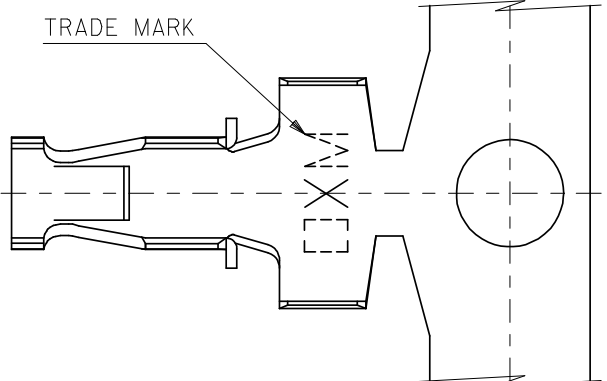
*Tooling specifications and manuals are found by selecting the products below. Crimp Height Specifications are then contained in the Application Tooling Specification document.*

**Global**

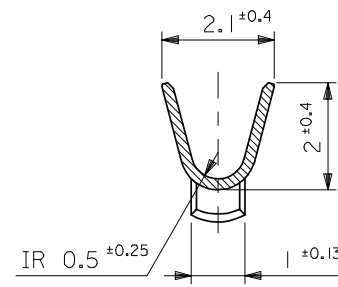
Description	Product #
Terminator Die	0011402246
Mini-Mac™ Applicator	0638918000

**Japan**

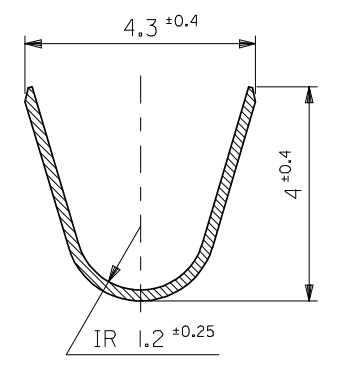
Description	Product #
Applicator for M211A Bench Press, 18-22 AWG, for 5298 Crimp Terminal	0011260104



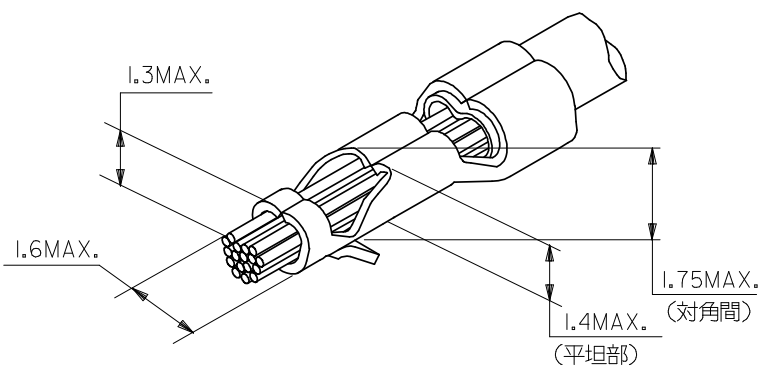
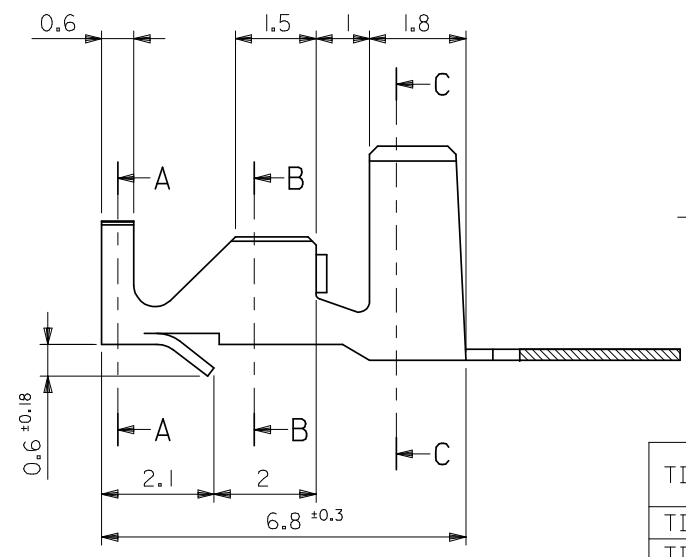
SECT. A-A



SECT. B-B



SECT. C-C



圧着外観図  
OUTSIDE VIEW OF CRIMP

NOTES

1. 推奨プリント基板穴径:  $\phi 1.8^{+0.1}_0$   
RECOMMENDED P.C.B. HOLES:  $\phi 1.8^{+0.1}_0$
2. 推奨プリント基板厚:  $t1.57^{+0.2}$   
RECOMMENDED P.C.B. THICKNESS:  $1.57^{+0.2}$
3. 材料の厚み: 0.203  
MATERIAL THICKNESS: 0.203

TIN-LEAD(90-10) 3.8 $\mu\text{m}$ MIN. OVER NICKEL 1.3 $\mu\text{m}$ MIN.	PHOSPHOR BRONZE	CHAIN	39-00-0277	5298PBPT
	BRASS	CHAIN	39-00-0276	5298PT
TIN 0.9 $\mu\text{m}$ MIN. REFLOW TREATMENT (PRE-PLATED)	PHOSPHOR BRONZE	CHAIN	39-00-0230	5298PBT
TIN 0.9 $\mu\text{m}$ MIN. OVER COPPER 0.5 $\mu\text{m}$ MIN. (PRE-PLATED)	BRASS	CHAIN	08-70-0106	5298T
PLATING	MATERIAL	FORM	EDP NO.	ENG. NO.

材料 MATERIAL	SEE TABLE & NOTE
仕上げ FINISH	—
適用電線範囲 WIRE RANGE	AWG #18-22
被覆外径 INS. RANGE	$\phi 1.7-3.05$

REVISED EC NO: J2008-3347 DRAWN: NABEI CHKD: THARUYAMA APPR: NUKITA	GENERAL TOLERANCES (UNLESS SPECIFIED)	10 UNDER	$\pm 0.2$
		10 OVER 30 UNDER	$\pm 0.25$
		30 OVER	$\pm 0.3$
		ANGULAR	$\pm 3^\circ$
	DRAFT WHERE APPLICABLE MUST REMAIN WITHIN DIMENSIONS		

DIMENSION STYLE MM ONLY	
DRAWN BY	DATE
CHECKED BY	DATE
APPROVED BY	DATE
MATERIAL NO.	
SEE TABLE	
SIZE	A3

SCALE 10:1	DESIGN UNITS METRIC	THIRD ANGLE PROJECTION
LOW PROFILE PC BOARD CRIMP PIN		
MOLEX INCORPORATED		
DOCUMENT NO.	SD-5298-001	SHEET NO. 1 OF 1
THIS DRAWING CONTAINS INFORMATION THAT IS PROPRIETARY TO MOLEX INCORPORATED AND SHOULD NOT BE USED WITHOUT WRITTEN PERMISSION		