

**PLEASE CHECK WWW.MOLEX.COM FOR LATEST PART INFORMATION**

**Part Number:** **0503509001**  
**Status:** **Active**  
**Description:** 2.50mm (.098") / 3.00mm (.118") Pitch Wire-to-Board Female Crimp Terminal, Tin (Sn)  
 Overall, 16-18 AWG, Reel Packaging, Lead-free

**Documents:**

[Drawing \(PDF\)](#) [RoHS Certificate of Compliance \(PDF\)](#)  
[Product Specification PS-51128-003 \(PDF\)](#)

**General**

Product Family	Crimp Terminals
Series	50350
Crimp Quality Equipment	Yes
Product Name	N/A

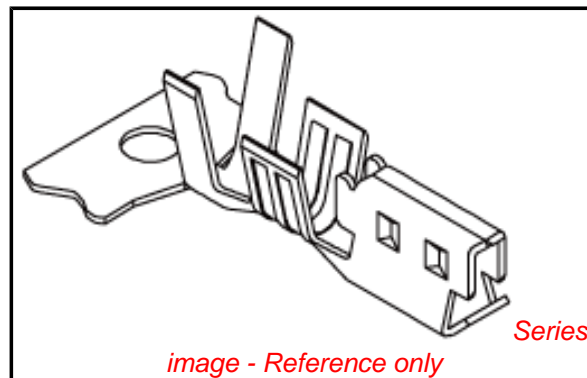
**Physical**

Durability (mating cycles max)	30
Gender	Female
Material - Metal	Brass
Material - Plating Mating	Tin
Material - Plating Termination	Tin
Packaging Type	Reel
Plating min: Mating (µin)	35
Plating min: Mating (µm)	0.88
Plating min: Termination (µin)	35
Plating min: Termination (µm)	0.88
Termination Interface: Style	Crimp or Compression
Wire Insulation Diameter	2.00-2.60mm (.079-.102")
Wire Size AWG	16, 18
Wire Size mm <sup>2</sup>	0.56 TO 1.29

**Material Info**

**Reference - Drawing Numbers**

Packaging Specification	PK-50350-001
Product Specification	PS-51128-003, RPS-51128-001, RPS-51128-002, RPS-51128-003
Sales Drawing	SD-50350-9*01



**EU RoHS**

**ELV and RoHS  
Compliant**

**REACH SVHC**

**Contains SVHC: No**

**Halogen-Free**

**Status**

**Halogen-Free**

**China RoHS**



**Need more information on product  
environmental compliance?**

Email [productcompliance@molex.com](mailto:productcompliance@molex.com)  
 For a multiple part number RoHS Certificate of  
 Compliance, [click here](#)

Please visit the [Contact Us](#) section for any  
 non-product compliance questions.

**Search Parts in this Series**

[50350Series](#)

**Use With**

[51128-1601](#)

**Application Tooling | FAQ**

*Tooling specifications and manuals are  
 found by selecting the products below.  
 Crimp Height Specifications are then  
 contained in the Application Tooling  
 Specification document.*

**Global**

Description	Product #
T2 Terminator Die	<a href="#">0638513100</a>
FineAdjust™	<a href="#">0638613100</a>
Applicator	

**Japan**

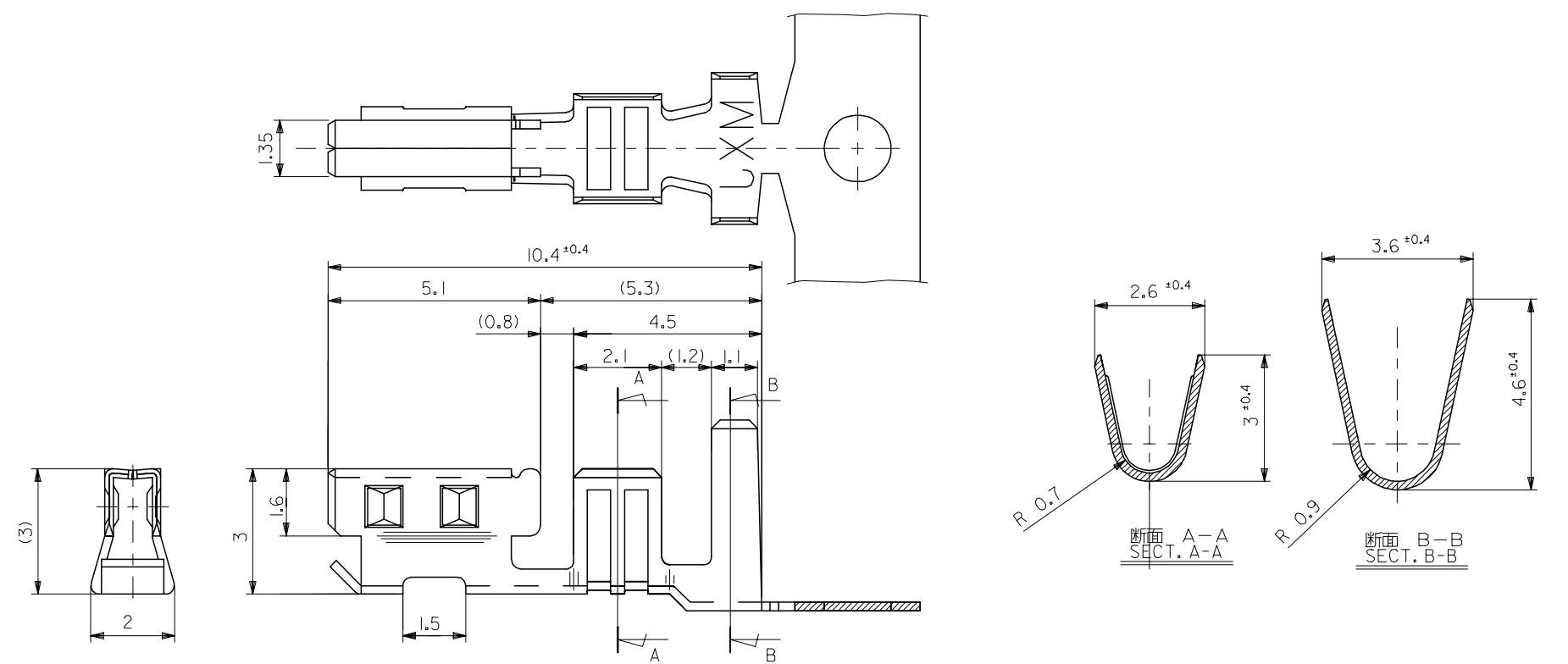
Description	Product #
Applicator for M21 1A	<a href="#">0572883000</a>
Bench Press, 16-20 AWG, for 50350 Crimp Terminal	

This document was generated on 05/20/2010

**PLEASE CHECK [WWW.MOLEX.COM](http://WWW.MOLEX.COM) FOR LATEST PART INFORMATION**

10 9 8 7 6 5 4 3 2 1

F  
E  
D  
C  
B  
A



Ø1.87~2.45	0.55~1.39mm <sup>2</sup> (AWG# 16~20, AVS-0.5)	51128-***01 51097-***00	黄銅、錫メッキ材 TIN PLATED BRASS t=0.2	50350-9101	バラ状 LOOSE
Ø2~2.6	0.56~1.29mm <sup>2</sup> (AVS-0.5~1.25相当) (CORRESPOND TO AVS-0.5~1.25)	51120-***0*		50350-9001	連鎖状 CHAIN
Ø1.87~2.45	0.55~1.39mm <sup>2</sup> (AWG# 16~20)	51128-***01 51097-***00	材料 MATERIAL	ENG. NO.	端子形状 FORM
Ø2~2.6	0.56~1.29mm <sup>2</sup> (AVS-0.5~1.25相当) (CORRESPOND TO AVS-0.5~1.25)	51120-***0*			
被覆外形 INS. RANGE	適用電線範囲 WIRE RANGE	適合ハウジング APPLICABLE HOUSING			

REVISED EC NO: J2006-0425 DRW: N. HAJI MA 2005/11/07 CHK: D. UKITA 2005/11/07 APP: R. NUKITA 2005/11/11	GENERAL TOLERANCES (UNLESS SPECIFIED)		DIMENSION STYLE MM ONLY		SCALE 10:1	DESIGN UNITS METRIC	THIRD ANGLE PROJECTION	
	10 UNDER	± 0.2	DRAWN BY M. SANO	DATE '92/03/18	TITLE 2.5/3.0 WIRE TO BORAD CONN. CRIMP RECEPTACLE			
	10 OVER 30 UNDER	± 0.25	CHECKED BY M. SANO M. SAK	DATE '95/06/27				
	30 OVER	± 0.3	APPROVED BY M. ENOMOTO	DATE '95/06/27	MOLEX INCORPORATED			
ANGULAR	± 3 °	MATERIAL NO.	DOCUMENT NO. SD-50350-9*01	SHEET NO. 1 OF 1				
DRAFT WHERE APPLICABLE MUST REMAIN WITHIN DIMENSIONS		SIZE A3	SEE CHART					THIS DRAWING CONTAINS INFORMATION THAT IS PROPRIETARY TO MOLEX INCORPORATED AND SHOULD NOT BE USED WITHOUT WRITTEN PERMISSION