

PLEASE CHECK WWW.MOLEX.COM FOR LATEST PART INFORMATION

Part Number: [0917143014](#)
Status: **Active**
Description: 1.27mm (.050") Pitch Picoflex® PF-50 Header, Right Angle, High Temp, Gold (Au) Plating, 14 Circuits, Glow Wire Compatible

Documents:

[3D Model](#) [Product Specification PS-99020-0011 \(PDF\)](#)
[Drawing \(PDF\)](#) [RoHS Certificate of Compliance \(PDF\)](#)

General

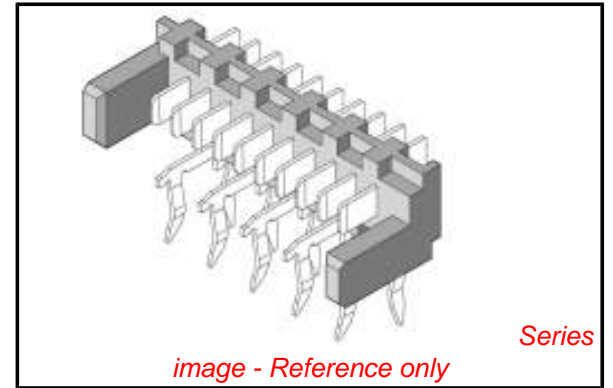
Product Family Ribbon Cable / Wire Trap Connectors
 Series [91714](#)
 Component Type PCB Header
 Glow-Wire Compliant Yes
 Product Name Picoflex®

Physical

Circuits (Loaded) 14
 Circuits (maximum) 14
 Color - Resin Natural
 Durability (mating cycles max) 100
 Entry Angle 90° Angle
 Lock to Mating Part Yes
 Material - Metal Brass
 Material - Plating Mating Gold
 Material - Plating Termination Gold
 Material - Resin High Temperature Thermoplastic
 Number of Rows 1
 PCB Locator No
 PCB Retention Yes
 PCB Thickness Recommended (in) 0.063 In
 PCB Thickness Recommended (mm) 1.60 mm
 Packaging Type Tube
 Pitch - Mating Interface (in) 0.050 In
 Pitch - Mating Interface (mm) 1.27 mm
 Pitch - Term. Interface (in) 0.050 In
 Pitch - Term. Interface (mm) 1.27 mm
 Plating min: Mating (µin) 30.4
 Plating min: Mating (µm) 0.76
 Plating min: Termination (µin) 4
 Plating min: Termination (µm) 0.1
 Polarized to Mating Part Yes
 Polarized to PCB No
 Shrouded Open Ends
 Stackable No
 Surface Mount Compatible (SMC) No
 Temperature Range - Operating -40°C to +105°C
 Termination Interface: Style Through Hole - Kinked Pin
 Wire Insulation Diameter N/A
 Wire Size AWG N/A
 Wire/Cable Type Ribbon Cable

Electrical

Current - Maximum per Contact 2.4A
 Voltage - Maximum 250V AC/DC



EU RoHS

ELV and RoHS Compliant
REACH SVHC Contains SVHC: No
Halogen-Free Status
Not Reviewed

China RoHS



Need more information on product environmental compliance?

Email productcompliance@molex.com
 For a multiple part number RoHS Certificate of Compliance, [click here](#)

Please visit the [Contact Us](#) section for any non-product compliance questions.

Search Parts in this Series

[91714Series](#)

Mates With

[90327 IDT Connector](#)

Material Info

Reference - Drawing Numbers

Product Specification

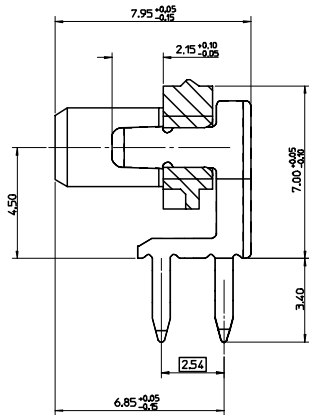
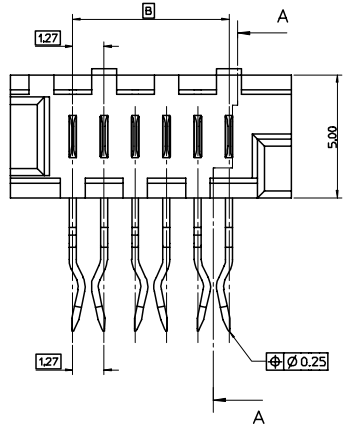
PS-99020-0011

Sales Drawing

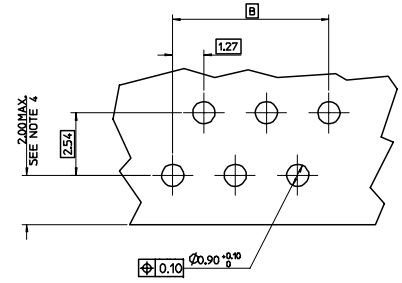
SD-91714-001

This document was generated on 04/09/2010

PLEASE CHECK WWW.MOLEX.COM FOR LATEST PART INFORMATION



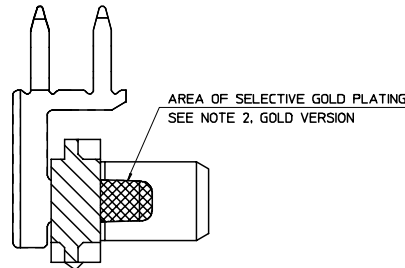
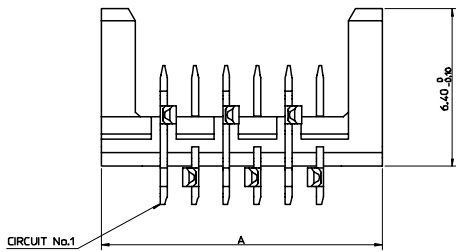
SECTION A-A



RECOMMENDED P.C.B. LAYOUT VIEWED FROM COMPONENT SIDE
(P.C.B THICKNESS 1.60±0.20)

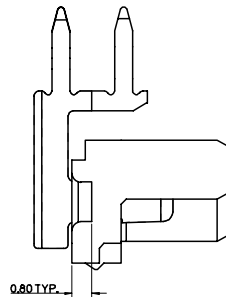
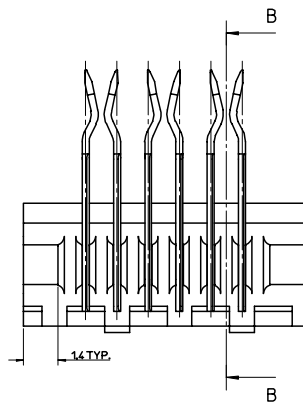
91714 - * 0 **

— (CIRCUIT SIZE (SEE CHART))
— 0- 3-5um TIN VERSION
— 3- 0.76um GOLD VERSION



SECTION B-B

PART No.	No. OF CKTS	DIMN. A	DIMN. B	QTY PER TUBE
91714--026	26	36.80	31.75	14
91714--024	24	34.26	29.21	15
91714--022	22	31.72	26.67	16
91714--020	20	29.18	24.13	18
91714--018	18	26.64	21.59	20
91714--016	16	24.10	19.05	22
91714--014	14	21.56	16.51	24
91714--012	12	19.02	13.97	28
91714--010	10	16.48	11.43	32
91714--008	08	13.94	8.89	38
91714--006	06	11.40	6.35	46
91714--004	04	8.86	3.81	59



NOTES:

- MATERIAL: HOUSING: NYLON 46, 30% GLASS FILLED TO UL 94 V-0, NATURAL. TERMINAL: CARTRIDGE BRASS 0.28 THICK REF.
- PLATING: TIN VERSION: 3-5um TIN ALLOVER 127um NICKEL UNDERCOAT. GOLD VERSION: 0.76um SELECTIVE GOLD AND 0.10-0.20um GOLD FLASH ALLOVER 127um NICKEL UNDERCOAT.
- MATES WITH MOLEX 90327 SERIES.
- DIMENSION APPLIES ONLY WHEN MATED TO A 90327 CONNECTOR WHOSE CABLE EXTENDS TOWARDS THE P.C.B.
- SEE PRODUCT SPECIFICATION PS-99020-0011.

REVISION UPDATE EC No: E2007-0083 DRWN: DAWASZKIEWICZ/06/09/11 CHKD: JDENNEHY/2006/09/11 APPR: JDENNEHY/2006/09/11	QUALITY SYMBOLS ▽ 0 ▽ 0	GENERAL TOLERANCES (UNLESS SPECIFIED) mm INCH		SCALE 10:1 DESIGN UNITS METRIC DIMENSION STYLE MM ONLY	THIRD ANGLE PROJECTION REVISION SYMBOLS	REVISE ON CAD ONLY
		4 PLACES ± --- ± --- 3 PLACES ± --- ± --- 2 PLACES ± 0.10 ± --- 1 PLACE ± 0.20 ± --- ANGULAR ± 2 °	DRAWN BY JDENNEHY DATE 2004/02/17 CHECKED BY JDENNEHY DATE 2004/02/18			
D DRWN: DAWASZKIEWICZ/06/09/11 CHKD: JDENNEHY/2006/09/11 APPR: JDENNEHY/2006/09/11	DRAFT WHERE APPLICABLE MUST REMAIN WITHIN DIMENSIONS	APPROVED BY BMAGUIRE DATE 2004/02/20	MATERIAL NO. SEE CHART DOCUMENT NO. SD-91714-001	SHEET NO. 1 OF 1	MOLEX INCORPORATED	THIS DRAWING CONTAINS INFORMATION THAT IS PROPRIETARY TO MOLEX INCORPORATED AND SHOULD NOT BE USED WITHOUT WRITTEN PERMISSION