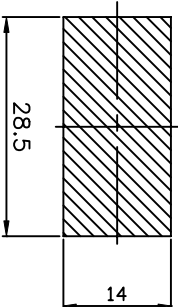
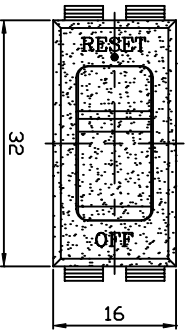


Revision		Date	Approved
Rev.	Description		

MODEL NO: 736W-B  
 Rating: 15A125V//250V AC(UL,CSA,VDE,  
 FIMKO,DEMKO,NEMKO,SEMKO)  
 APPROVAL File:

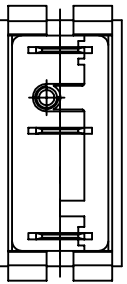
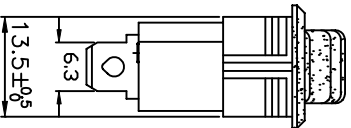
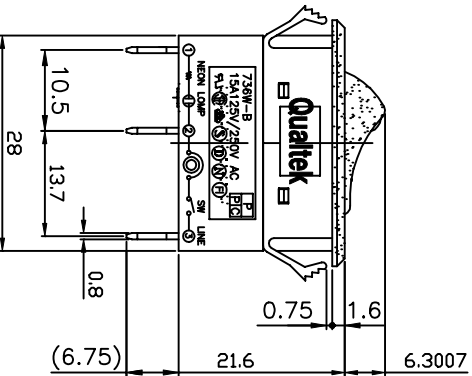
- UL APPROVAL
- CSA APPROVAL
- VDE APPROVAL
- FIMKO APPROVAL
- DEMKO APPROVAL
- NEMKO APPROVAL
- SEMKO APPROVAL



PANEL CUT OUT

**CIRCUIT BREAKER TRIP TIME VS AMPERES**

Model Number	Current Rating	Overload Percentage	Trip Time (in seconds)
			VS Amperes at+25
736W-B-101	15A	100%	No Trip
		150%	Trip in 1 hour
		200%	3~30
		300%	1~10
		400%	0.4~2.5
		600%	0.2~0.75
		800%	0.10~0.4
	1000%	0.07~0.3	



<b>Qualtek Electronics Corp.</b>			
PPC DIVISION			
Part Number: 736W-B-101			
Description: CIRCUIT BREAKER/SWITCH ILLUMINATED WITH BLACK BODY AND RED ACTUATOR			
Dim range (mm)	Tolerance (+/-) (mm)	Drawn/Date	Checked/Date
0-1	0.15	50-120	08-02-99
1-6	0.20	120-250	S.CHEN
6-18	0.30	250-500	08-02-99
18-50	0.50		
50-120	0.70		
120-250	0.90		
250-500	1.20		
		Approved/Date	JJH/08-02-99