

PLEASE CHECK WWW.MOLEX.COM FOR LATEST PART INFORMATION

Part Number: **0192700018**
Status: **Active**
Overview: permafit
Description: Perma-Fit™ Heavy Wall Battery Cable Tubing, 19.05mm (.750") Inside Diameter (As Supplied), Black, 1.22m (4.0') Length

Documents:
[Drawing \(PDF\)](#)

[RoHS Certificate of Compliance \(PDF\)](#)

General

Product Family	Heat Shrink Tubing
Series	<u>19270</u>
Comments	75 per bag
Overview	<u>permafit</u>
Product Name	Perma-Fit™

Physical

Packaging Type	Bag
Temperature Range - Operating	-55°C to +110°C

Material Info

Old Part Number	PFB-07-1BK
-----------------	------------

Reference - Drawing Numbers

Sales Drawing	SD-19270-001
---------------	--------------

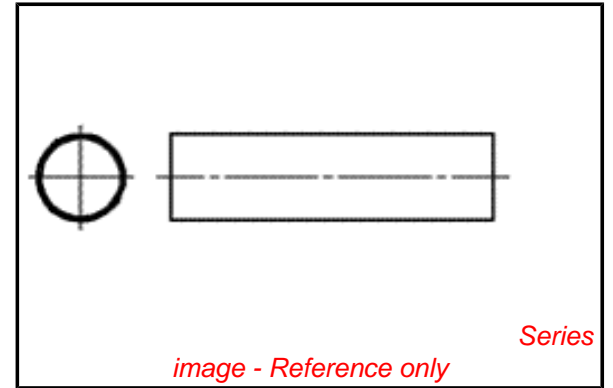


image - Reference only

EU RoHS

**ELV and RoHS
Compliant**

REACH SVHC

Not Reviewed

Halogen-Free

Status

Not Reviewed

China RoHS



**Need more information on product
environmental compliance?**

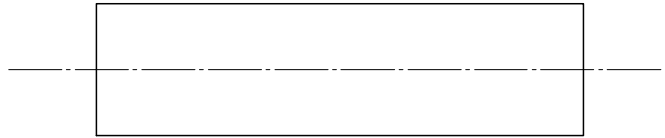
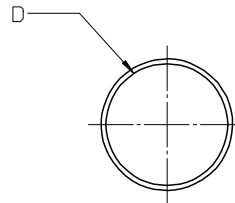
Email productcompliance@molex.com
 For a multiple part number RoHS Certificate of Compliance, [click here](#)

Please visit the [Contact Us](#) section for any non-product compliance questions.

Search Parts in this Series
 19270Series

PLEASE CHECK WWW.MOLEX.COM FOR LATEST PART INFORMATION

BLACK		RED		MIN	MAX	RECOVERED	LENGTH
MATERIAL NUMBER	ENGINEERING NUMBER	MATERIAL NUMBER	ENGINEERING NUMBER	EXPANDED ID "D"	RECOVERED ID	WALL THK REF	
192700008	PFB-04-1BK	192700013	PFB-04-1RD	.400/10.16	.150/3.81	.060/1.53	4.0/1.2
192700018	PFB-07-1BK	192700023	PFB-07-1RD	.750/19.05	.220/5.59	.095/2.41	
192700028	PFB-11-1BK	192700033	PFB-11-1RD	1.100/27.94	.375/9.53	.120/3.05	
192700038	PFB-15-1BK	192700043	PFB-15-1RD	1.500/38.10	.500/19.05	.140/3.56	
192700048	PFB-20-1BK	192700053	PFB-20-1RD	2.000/50.80	.750/19.05	.155/3.98	
192700058	PFB-30-1BK	192700063	PFB-30-1RD	3.540/89.92	1.18/29.97	.155/3.98	
192700068	PFB-40-1BK	192700073	PFB-40-1RD	4.72/119.89	1.57/39.88	.170/4.37	



SALES DRAWING

- NOTES:
- MATERIAL: POLYOLEFIN
 - OTHER CUT LENGTHS ARE AVAILABLE.

NEW RELEASE EC NO: ETC2005-0060 DRW: BENDERLE 2004/09/28 CHK'D: DEROSS 2004/09/28 APPR: DEROSS 2004/09/28	QUALITY SYMBOLS	GENERAL TOLERANCES (UNLESS SPECIFIED)	DIMENSION STYLE	SCALE	DESIGN UNITS	THIRD ANGLE PROJECTION															
	▼=0 ▽=0	<table border="1"> <thead> <tr> <th></th> <th>mm</th> <th>INCH</th> </tr> </thead> <tbody> <tr> <td>4 PLACES</td> <td>± ---</td> <td>± ---</td> </tr> <tr> <td>3 PLACES</td> <td>± ---</td> <td>± .010</td> </tr> <tr> <td>2 PLACES</td> <td>± 0.25</td> <td>± .02</td> </tr> <tr> <td>1 PLACE</td> <td>± 0.51</td> <td>± ---</td> </tr> </tbody> </table>		mm	INCH	4 PLACES	± ---	± ---	3 PLACES	± ---	± .010	2 PLACES	± 0.25	± .02	1 PLACE	± 0.51	± ---	IN/MM	1:1	INCH	
		mm	INCH																		
	4 PLACES	± ---	± ---																		
3 PLACES	± ---	± .010																			
2 PLACES	± 0.25	± .02																			
1 PLACE	± 0.51	± ---																			
DESCRIPTION	DRAFT WHERE APPLICABLE MUST REMAIN WITHIN DIMENSIONS	<table border="1"> <tr> <td>DRAWN BY</td> <td>DATE</td> </tr> <tr> <td>BENDERLE</td> <td>2004/09/23</td> </tr> <tr> <td>CHECKED BY</td> <td>DATE</td> </tr> <tr> <td>R DEROSS</td> <td>2004/09/23</td> </tr> <tr> <td>APPROVED BY</td> <td>DATE</td> </tr> <tr> <td>R DEROSS</td> <td>2004/09/23</td> </tr> </table>	DRAWN BY	DATE	BENDERLE	2004/09/23	CHECKED BY	DATE	R DEROSS	2004/09/23	APPROVED BY	DATE	R DEROSS	2004/09/23	TITLE	PERMA-FIT POLYOLEFIN HEAT SHRINK TUBING 19270 SERIES					
DRAWN BY	DATE																				
BENDERLE	2004/09/23																				
CHECKED BY	DATE																				
R DEROSS	2004/09/23																				
APPROVED BY	DATE																				
R DEROSS	2004/09/23																				
REV		MATERIAL NO.	SEE CHART	DOCUMENT NO.	MOLEX INCORPORATED SD-19270-001																
A		SIZE	B	THIS DRAWING CONTAINS INFORMATION THAT IS PROPRIETARY TO MOLEX INCORPORATED AND SHOULD NOT BE USED WITHOUT WRITTEN PERMISSION																	
					SHEET NO.	1 OF 1															