

PLEASE CHECK WWW.MOLEX.COM FOR LATEST PART INFORMATION

Part Number: [0511140310](#)
Status: **Active**
Description: 3.50mm (.138") Pitch Wire-to-Wire Plug Housing, Positive Lock, With Optional Panel Mount, 3 Circuits

Documents:

[3D Model](#) [Product Specification PS-51067-008 \(PDF\)](#)
[Drawing \(PDF\)](#) [RoHS Certificate of Compliance \(PDF\)](#)

Agency Certification

CSA	LR19980
TUV	R72081037
UL	E29179

General

Product Family	Crimp Housings
Series	51114
Product Name	N/A

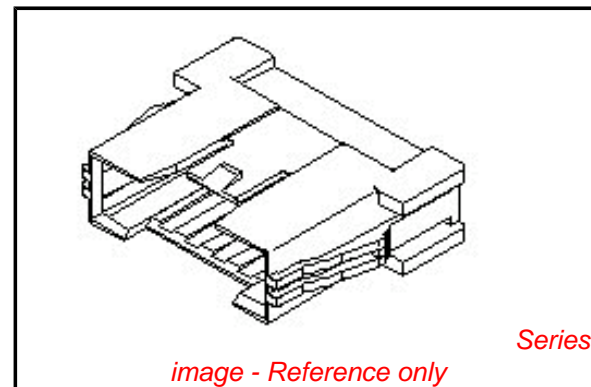
Physical

Circuits (maximum)	3
Color - Resin	Natural
Flammability	94V-0
Gender	Male
Glow-Wire Compliant	No
Material - Resin	Polyester
Number of Rows	1
Packaging Type	Bag
Panel Mount	No
Pitch - Mating Interface (in)	0.138 In
Pitch - Mating Interface (mm)	3.50 mm
Stackable	No
Temperature Range - Operating	-40°C to +105°C

Material Info

Reference - Drawing Numbers

Product Specification	PS-51067-008
Sales Drawing	SD-51114-**10



EU RoHS

ELV and RoHS Compliant
REACH SVHC Contains SVHC: No
Halogen-Free Status

China RoHS



Not Halogen-Free

Need more information on product environmental compliance?

Email productcompliance@molex.com
 For a multiple part number RoHS Certificate of Compliance, [click here](#)

Please visit the [Contact Us](#) section for any non-product compliance questions.

Search Parts in this Series

[51114Series](#)

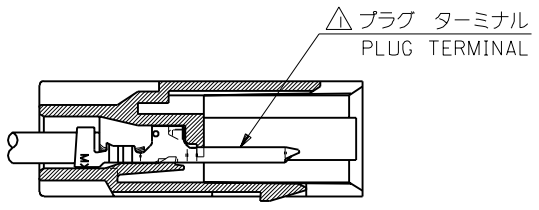
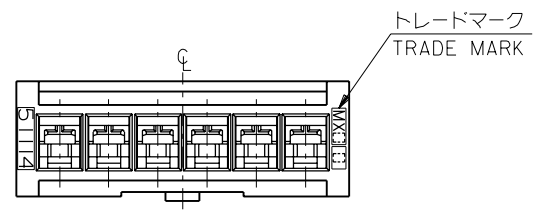
Mates With

[51067](#)

Use With

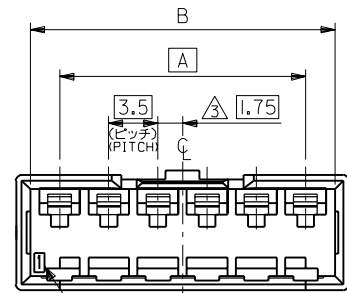
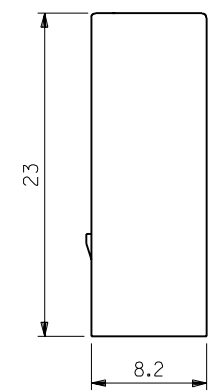
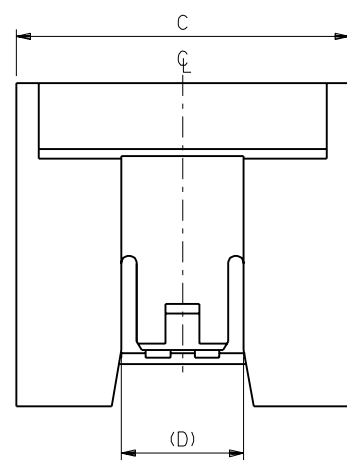
[50419](#)

DWG. NO. SD-51114-***10



- 注記 NOTES
- △ 適合プラグ ターミナル : 50419-****
APPLICABLE PLUG TERMINAL : 50419-****
 - 2. 嵌合相手 : 51067 シリーズ
MATE WITH : 51067 SERIES
 - △ 偶数極の製品に適用。
APPLY EVEN CIRCUIT PRODUCTS.

ターミナル装着状態図
TERMINAL ASSEMBLY DRAWING



8.7	37.7	35.7	31.5	51114-1010	10	
	34.2	32.2	28.0	-0910	9	
	30.7	28.7	24.5	-0810	8	
	27.2	25.2	21.0	-0710	7	
	23.7	21.7	17.5	-0610	6	
	20.2	18.2	14.0	-0510	5	
	8.7	16.7	14.7	-0410	4	
	6.1	13.2	11.2	-0310	3	
	6.1	9.7	7.7	3.5	51114-0210	2
(D)	C	B	A	ENG. NO.	CKT. 極数	

角度 ANGLE	±3°								
30以上 OVER	+0.3								
10以上 30未満 UNDER	+0.25								
10未満 UNDER	+0.2								
一般公差 GENERAL TOLERANCES		記号 LTR	変更内容 REVISION RECORD	DR. 日付 DATE	CHK. 日付 DATE	新規作成 (J30900) RELEASED	93/9/7		

材料 MATERIAL	PBT, UL94V-0
仕上げ FINISH	— # —
適用電線範囲 WIRE RANGE	— # —
被覆外径 INS. RANGE	— # —
DRAWN BY '93/5/24	CHK'D BY '93/9/7
M.FUJIKURA	H.HIRAMOTO
APP'D BY '93/9/7	尺度 SCALE 3 : 1
M.FUKUSHIMA	

molex MOLEX-JAPAN CO.,LTD.
日本モレックス株式会社

REVISE ONLY ON CAD SYSTEM

TITLE 名称
3.5 WIRE TO WIRE CONN.
PLUG HOUSING

DWG. NO. SD-51114-***10

REV 0