

**PLEASE CHECK WWW.MOLEX.COM FOR LATEST PART INFORMATION**

**Part Number:** [0351280400](#)  
**Status:** **Active**  
**Description:** 6.00mm (.236") Pitch Wire-to-Wire Female Housing, 4 Circuits, Vertical

**Documents:**

[Drawing \(PDF\)](#) [RoHS Certificate of Compliance \(PDF\)](#)  
[Product Specification PS-35127-001 \(PDF\)](#)

**Agency Certification**

CSA	LR19980
TUV	R72081037
UL	E29179

**General**

Product Family	Crimp Housings
Series	<a href="#">35128</a>
Product Name	N/A

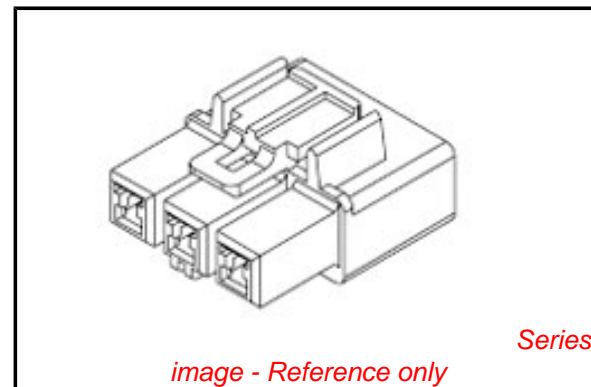
**Physical**

Circuits (maximum)	4
Color - Resin	Natural
Flammability	94V-0
Gender	Female
Glow-Wire Compliant	No
Material - Resin	Polyester
Number of Rows	1
Packaging Type	Bag
Panel Mount	No
Pitch - Mating Interface (in)	0.236 In
Pitch - Mating Interface (mm)	6.00 mm
Stackable	No
Temperature Range - Operating	-40°C to +120°C

**Material Info**

**Reference - Drawing Numbers**

Product Specification	PS-35127-001
Sales Drawing	SD-35128-001



**EU RoHS**

**ELV and RoHS  
Compliant**  
**REACH SVHC**  
 Not Reviewed  
**Halogen-Free  
Status**  
 Not Reviewed

**China RoHS**



**Need more information on product  
environmental compliance?**

Email [productcompliance@molex.com](mailto:productcompliance@molex.com)  
 For a multiple part number RoHS Certificate of  
 Compliance, [click here](#)

Please visit the [Contact Us](#) section for any  
 non-product compliance questions.

**Search Parts in this Series**

[35128Series](#)

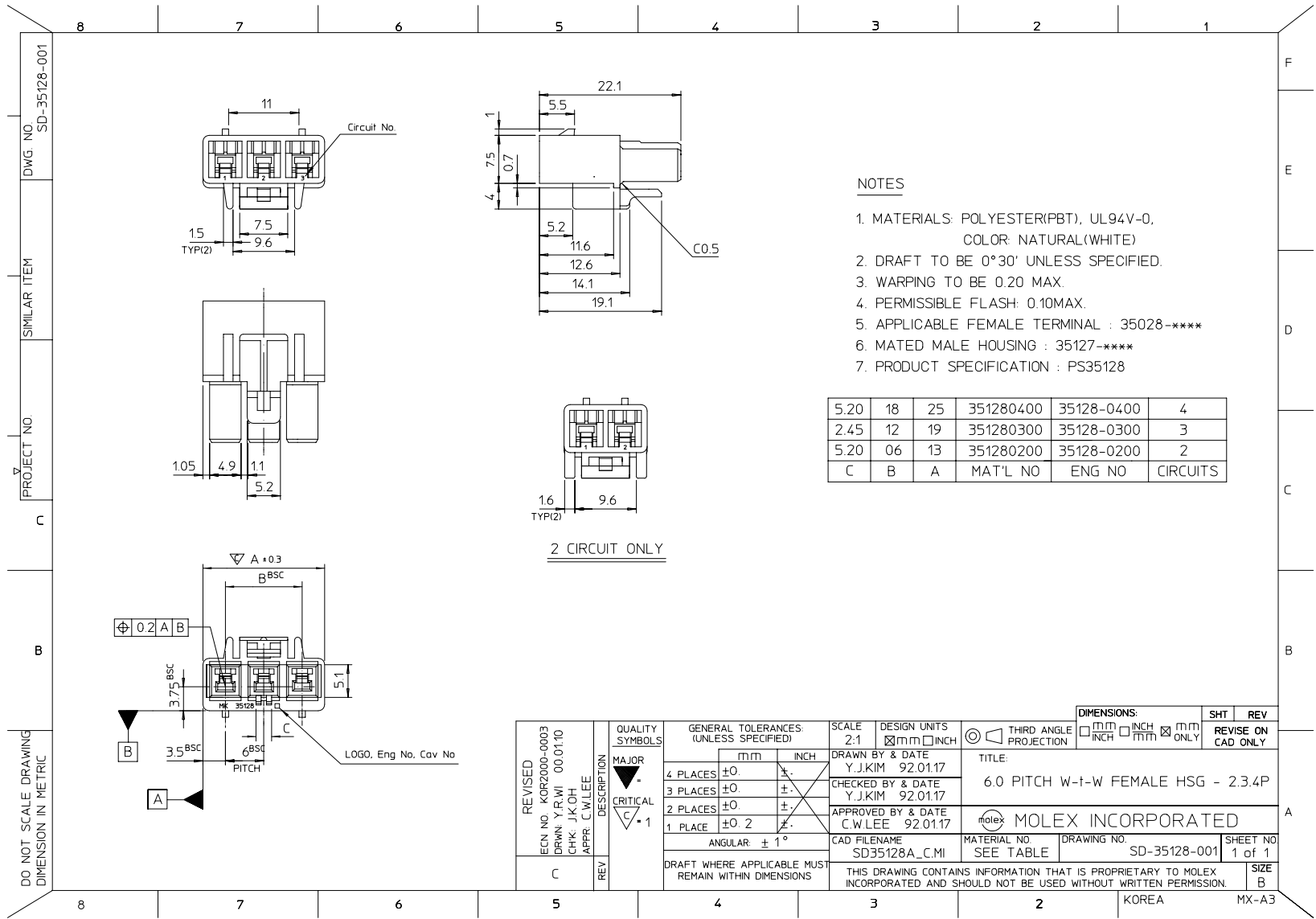
**Mates With**

[35127](#)

**Use With**

[35028](#)

**PLEASE CHECK WWW.MOLEX.COM FOR LATEST PART INFORMATION**



**NOTES**

1. MATERIALS: POLYESTER(PBT), UL94V-0, COLOR: NATURAL(WHITE)
2. DRAFT TO BE 0°30' UNLESS SPECIFIED.
3. WARPING TO BE 0.20 MAX.
4. PERMISSIBLE FLASH: 0.10MAX.
5. APPLICABLE FEMALE TERMINAL : 35028-\*\*\*\*
6. MATED MALE HOUSING : 35127-\*\*\*\*
7. PRODUCT SPECIFICATION : PS35128

5.20	18	25	351280400	35128-0400	4
2.45	12	19	351280300	35128-0300	3
5.20	06	13	351280200	35128-0200	2
C	B	A	MAT'L NO	ENG NO	CIRCUITS

PROJECT NO. SD-35128-001  
 SIMILAR ITEM  
 DWG. NO.  
 DO NOT SCALE DRAWING  
 DIMENSION IN METRIC

REVISED ECN NO. KOR2000-0003 DRWN. Y.R.WI 00.01.10 CHK. J.K.OH APPR. C.W.LEE	QUALITY SYMBOLS MAJOR CRITICAL 1	GENERAL TOLERANCES: (UNLESS SPECIFIED)		SCALE 2:1	DESIGN UNITS <input checked="" type="checkbox"/> mm <input type="checkbox"/> INCH	THIRD ANGLE PROJECTION	DIMENSIONS: <input type="checkbox"/> mm <input type="checkbox"/> INCH <input checked="" type="checkbox"/> mm ONLY	SHT REVISE ON CAD ONLY	REV
		4 PLACES ±0 3 PLACES ±0 2 PLACES ±0 1 PLACE ±0.2	m/m INCH <del>mm</del> <del>inch</del>	DRAWN BY & DATE Y.J.KIM 92.01.17	CHECKED BY & DATE Y.J.KIM 92.01.17	APPROVED BY & DATE C.W.LEE 92.01.17	TITLE: 6.0 PITCH W-T-W FEMALE HSG - 2.34P	MOLEX INCORPORATED	
C	DESCRIPTION	ANGULAR: ± 1°		CAD FILENAME SD35128A_C.MI	MATERIAL NO SEE TABLE	DRAWING NO. SD-35128-001	SHEET NO. 1 of 1	DRAFT WHERE APPLICABLE MUST REMAIN WITHIN DIMENSIONS	
THIS DRAWING CONTAINS INFORMATION THAT IS PROPRIETARY TO MOLEX INCORPORATED AND SHOULD NOT BE USED WITHOUT WRITTEN PERMISSION.				KOREA		MX-A3			