

**PLEASE CHECK WWW.MOLEX.COM FOR LATEST PART INFORMATION**

**Part Number:** [5023510600](#)  
**Status:** **Active**  
**Overview:** [duraclik](#)  
**Description:** 2.00mm (.079") Pitch DuraClik™ Wire-to-Board Receptacle Housing, Single Row, 6 Circuits

**Documents:**

[3D Model](#) [Product Specification PS-502351-001 \(PDF\)](#)  
[Drawing \(PDF\)](#) [RoHS Certificate of Compliance \(PDF\)](#)

**General**

Product Family Crimp Housings  
 Series [502351](#)  
 Overview [duraclik](#)  
 Product Name DuraClik™

**Physical**

Circuits (maximum) 6  
 Color - Resin White  
 Gender Receptacle  
 Glow-Wire Compliant No  
 Keying to Mating Part Yes  
 Lock to Mating Part Yes  
 Number of Rows 1  
 Packaging Type Bag  
 Panel Mount No  
 Pitch - Mating Interface (in) 0.079 In  
 Pitch - Mating Interface (mm) 2.00 mm  
 Polarized to Mating Part Yes  
 Temperature Range - Operating -40°C to +105°C

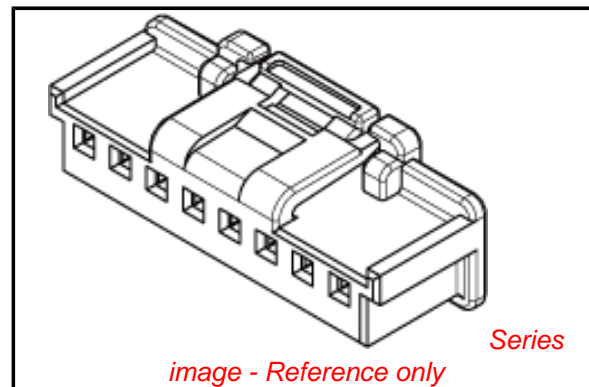
**Electrical**

Current - Maximum per Contact 3A

**Material Info**

**Reference - Drawing Numbers**

Packaging Specification [PK-502351-001](#)  
 Product Specification [PS-502351-001](#), [RPS-502351-001](#)  
 Sales Drawing [SD-502351-001](#)



*image - Reference only*

**EU RoHS**

**ELV and RoHS  
 Compliant**  
**REACH SVHC  
 Contains SVHC: No**  
**Halogen-Free  
 Status**

**China RoHS**



**Need more information on product  
 environmental compliance?**

Email [productcompliance@molex.com](mailto:productcompliance@molex.com)  
 For a multiple part number RoHS Certificate of Compliance, [click here](#)

Please visit the [Contact Us](#) section for any non-product compliance questions.

**Search Parts in this Series**

[502351Series](#)

**Mates With**

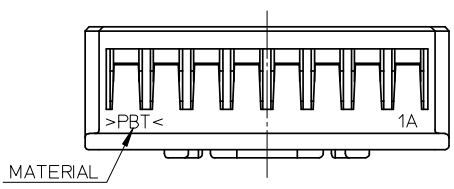
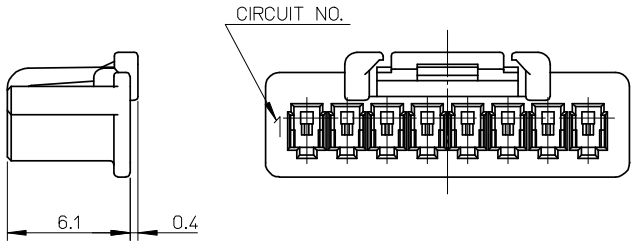
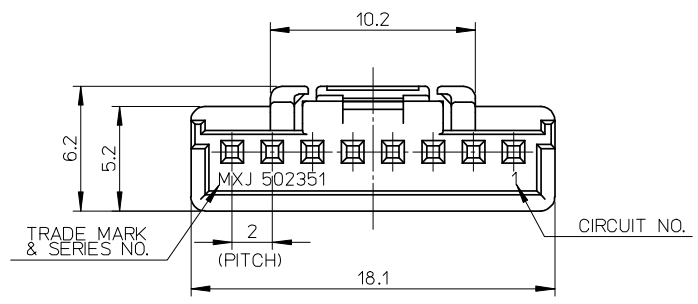
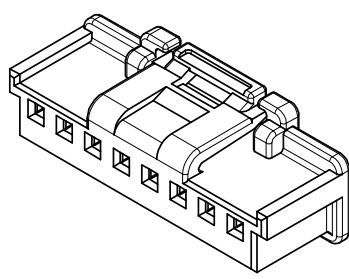
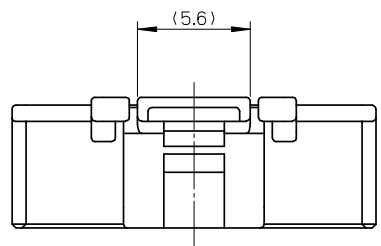
[502352](#) PCB Header

**Use With**

[50212](#) Crimp Terminal . [50372](#) Crimp Terminal

NOTES

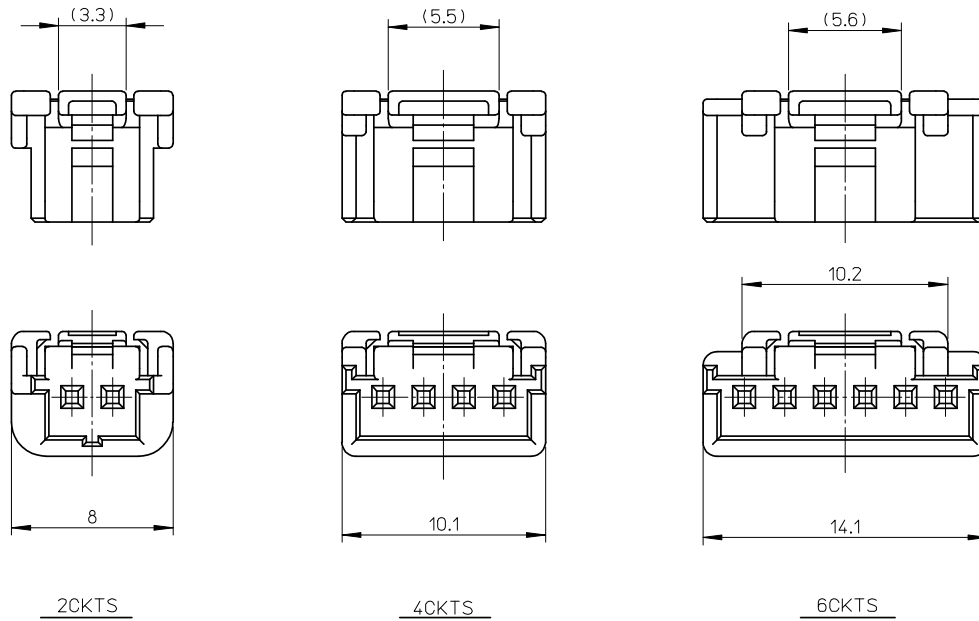
- 1. 材質: PBT  
MATERIAL: PBT
- 2. 色: 白  
COLOR: WHITE
- 3. 適合端子: 50212, 50372シリーズ  
APPLICABLE TERMINAL: 50212, 50372 SERIES
- 4. 嵌合相手: 502352シリーズ  
MATES WITH: 502352 SERIES
- 5. ELV及びRoHS適合品  
ELV AND RoHS COMPLIANT



8CKTS

502351-0800	8
502351-0600	6
502351-0400	4
502351-0200	2
MATERIAL NO.	CKTS

RELEASED EC NO: JTR2008-0007 DRWN: SHIBATA 2008/01/23 CHKD: HKOMATSU 2008/01/23 APPR: AKANESHIGE 2008/01/23	GENERAL TOLERANCES (UNLESS SPECIFIED)		DIMENSION STYLE	SCALE	DESIGN UNITS	THIRD ANGLE PROJECTION
			MM ONLY	4:1	METRIC	
	10 UNDER	±0.20	DRAWN BY	DATE	TITLE	
	10 OVER 30 UNDER	±0.25	SHSHIBATA	2007/12/18	2.0MM PITCH WIRE TO BOARD CONN. RECEPTACLE HOUSING	
30 OVER	±0.30	CHECKED BY	DATE	MOLEX INCORPORATED		
ANGULAR	±3 °	APPROVED BY	DATE	MATERIAL NO.		
DRAFT WHERE APPLICABLE MUST REMAIN WITHIN DIMENSIONS		AKANESHIGE	2007/12/18	DOCUMENT NO.		
		SEE CHART		SD-502351-001		
		SIZE A3		SHEET NO. 1 OF 2		
		THIS DRAWING CONTAINS INFORMATION THAT IS PROPRIETARY TO MOLEX INCORPORATED AND SHOULD NOT BE USED WITHOUT WRITTEN PERMISSION				



RELEASED EC NO: JTR2008-0007 DRWN: SHSHIBATA 2008/01/23 CHK'D: HKOMATSU 2008/01/23 APPR: AKANESHIGE 2008/01/23	GENERAL TOLERANCES (UNLESS SPECIFIED)		DIMENSION STYLE MM ONLY	SCALE 4:1	DESIGN UNITS METRIC	THIRD ANGLE PROJECTION
	10 UNDER	± 0.20	DRAWN BY SHSHIBATA	DATE 2007/12/18	TITLE 2.0MM PITCH WIRE TO BOARD CONN. RECEPTACLE HOUSING	
	10 OVER 30 UNDER	± 0.25	CHECKED BY HKOMATSU	DATE 2007/12/18		
	30 OVER	± 0.30	APPROVED BY AKANESHIGE	DATE 2007/12/18	MOLEX INCORPORATED	
ANGULAR ±3 °	DRAFT WHERE APPLICABLE MUST REMAIN WITHIN DIMENSIONS	MATERIAL NO. SEE CHART	DOCUMENT NO. SD-502351-001	SHEET NO. 2 OF 2		
0	REV	THIS DRAWING CONTAINS INFORMATION THAT IS PROPRIETARY TO MOLEX INCORPORATED AND SHOULD NOT BE USED WITHOUT WRITTEN PERMISSION				