

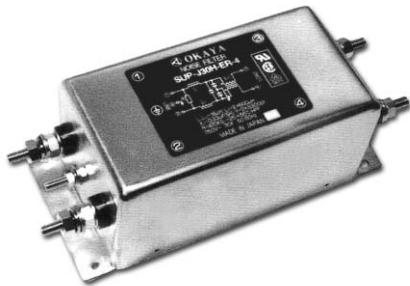


Features

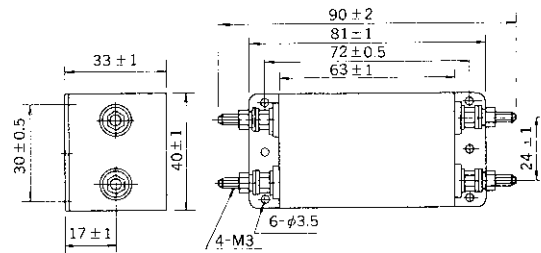
- Common and normal mode attenuation to 30MHz.
- Leak current lower than 1.0mA (250V_{AC}, 60Hz).
- Bleed resistor for electric shock protection.

Applications

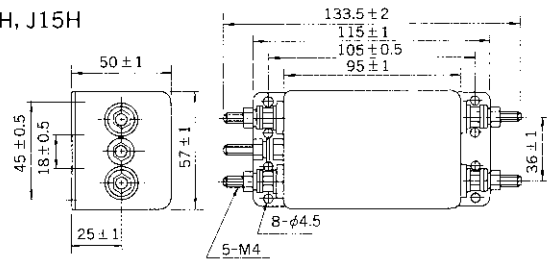
- Copiers, Fax machines, Office appliances, Measuring devices, Control systems.
- SUP-J□H-ER-4 Series (Screw terminal)



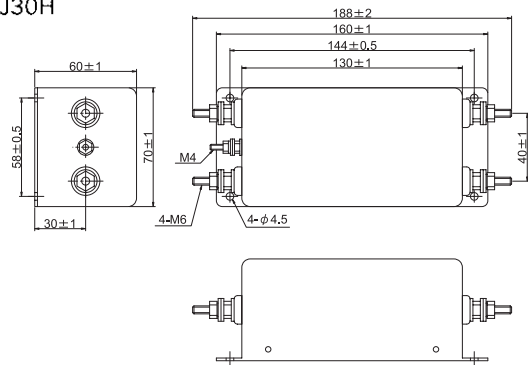
J5H



J10H, J15H



J20H, J30H



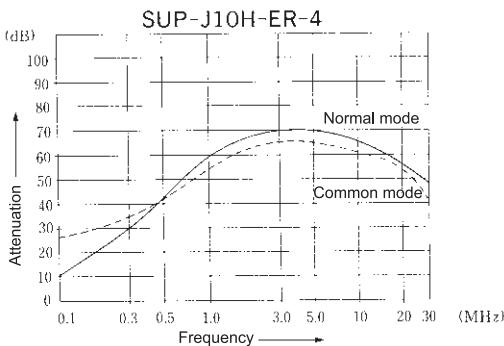
Unit: mm



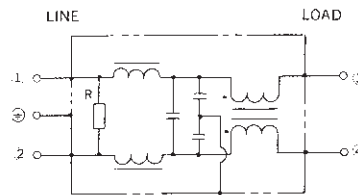
Safety Agency : Standard	File No.
UL : UL-1283	E78644
CSA : C22.2, No.8-M1986	LR60681
SEMKO : EN133200	SE/014-18

The "ENCE" mark is a common European product certification mark based on testing to harmonised European safety standard.

Static characteristics



Circuit



Bleeder resistor R: 1MΩ (J5H, J10H, J15H)
470kΩ (J20H, J30H)

Electrical Specifications

Rated Voltage **250VAC**

Safety Agency	Model Number	Rated Current (A)	Test Voltage	Insulation Resistance	Leakage Current (max)	Voltage Drop (max)	Temperature Rise (max)	Operating Temperature (°C)	Insertion losses	
									Normal Mode (MHz)	Common Mode (MHz)
	SUP-J5H-ER-4	5	Line to Line 1000Vrms 50/60Hz 60sec Line to Ground 2000Vrms 50/60Hz 60sec	Line to Ground 6000MΩmin (at 500V _{DC})	1.0mA (at 250Vrms 60Hz)	1.5Vrms	30deg	-25 ~ +55	0.5 ~ 30	0.5 ~ 20
	SUP-J10H-ER-4	10							0.6 ~ 30	0.5 ~ 20
	SUP-J15H-ER-4	15							1.0 ~ 30	1.0 ~ 20
	SUP-J20H-ER-4	20							0.5 ~ 30	0.9 ~ 20
	SUP-J30H-ER-4	30							0.7 ~ 30	2.0 ~ 20

Guaranteed attenuation is more than 30dB.