



Features

- Super high  $\mu$  material. (20~30dB attenuation at 10kHz, more than 25dB at 1.5kV puls)
- Two types of leakage current
  - less than 70mA
  - less than 10mA (applies to medical equipment)
- Three terminal styles (Faston®, solder and screw).
- Bleed resistor for electric shock protection.



Safety Agency : Standard	File No.
UL : UL-1283	E78644
CSA : C22.2, No.8-M1986	LR60681
SEMKO : EN133200	SE/0142-21

The "ENCE" mark is a common European product certification mark based on testing to harmonised European safety standard.

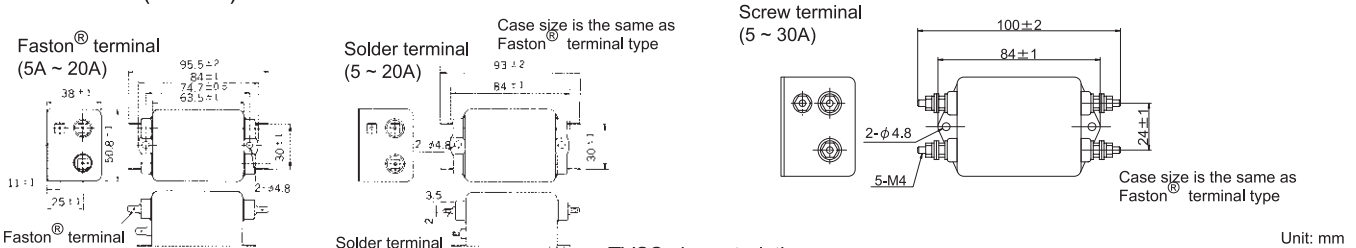
- SUP-P□H-E1PR-0 Series (Faston® terminal)
- SUP-P□H-E1PR-2 Series (Solder terminal)
- SUP-P□H-E1PR-4 Series (Screw terminal)

Applications

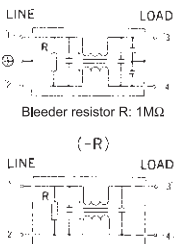
- Information processing devices (for Europe), Medical equipments, Office appliances and Various control systems.



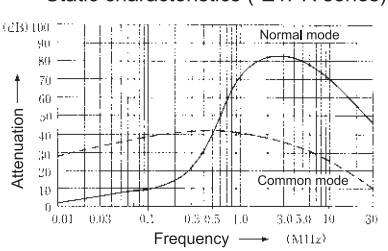
Dimensions (-E1PR)



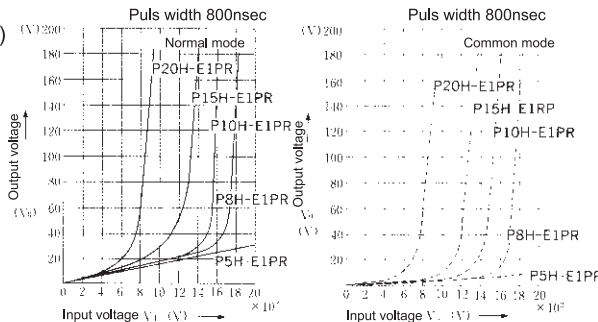
Circuit (-E1PR)



Static characteristics (-E1PR series)



TVSS characteristics



Electrical Specifications

Rated Voltage 250VAC

Safety Agency	Model Number	Rated Current (A)	Test Voltage	Insulation Resistance	Leakage Current (max)	Voltage Drop (max)	Temperature Rise (max)	Operating Temperature (°C)	Insertion losses						
									Normal Mode (MHz)	Common Mode (MHz)					
RU	SUP-P5H-E1PR(0)	5	Line to Line 1000Vrms 50/60Hz 60sec Line to Ground 2000Vrms 50/60Hz 60sec	Line to Ground 6000MΩmin (at 500V <sub>DC</sub> )	70μA (at 250Vrms 60Hz)	1.0Vrms	35deg	-25 ~ +50	0.5 ~ 20	0.05 ~ 20					
	SUP-P8H-E1PR(0)	8							0.6 ~ 30	0.09 ~ 30					
	SUP-P10H-E1PR(0)	10							0.7 ~ 30	0.1 ~ 30					
	SUP-P15H-E1PR(0)	15							1.0 ~ 30	0.1 ~ 30					
	SUP-P20H-E1PR(0)	20							1.5 ~ 30	3.0 ~ 30					
SF	*SUP-P30H-E1PR-4	30			3.0 ~ 30				4.0 ~ 30	10μA (at 250Vrms 60Hz)	1.0Vrms	35deg	-25 ~ +50	0.5 ~ 20	-
	SUP-P5H-R(0)	5			0.6 ~ 30				-						
	SUP-P8H-R(0)	8			0.7 ~ 30				-						
	SUP-P10H-R(0)	10			1.0 ~ 30				-						
	SUP-P15H-R(0)	15			1.5 ~ 30				-						
S	SUP-P20H-R(0)	20	3.0 ~ 30	-	10μA (at 250Vrms 60Hz)	1.0Vrms	35deg	-25 ~ +50	0.5 ~ 20	-					
	*SUP-P30H-R-4	30	3.0 ~ 30	-											

Guaranteed attenuation is more than 40dB in normal mode and more than 35dB in common mode for SUP-PH-E1PR series. (more than 25dB at 15A and more than 20dB at 30A)  
\*screw terminal type