

**PLEASE CHECK WWW.MOLEX.COM FOR LATEST PART INFORMATION**

**Part Number:** [0431300001](#)  
**Status:** **Active**  
**Overview:** [minifit\\_tpa](#)  
**Description:** 4.20mm (.165") Pitch Mini-Fit TPA™ Plug Housing, Dual Row With Secondary Terminal Retention, Circuits

**Documents:**

[3D Model](#) [RoHS Certificate of Compliance \(PDF\)](#)  
[Drawing \(PDF\)](#)

**General**

Product Family	Crimp Housings
Series	<a href="#">43130</a>
Comments	Current = 13A max. per circuit when header is mated to a receptacle loaded with <a href="#">45750</a> series terminals crimped to 16 AWG wire. . See Molex product specification PS-45750-001 for additional current de-rating information. . Snap-On Panel Mounting Ear (2 Required Per Plug)
Overview	<a href="#">minifit_tpa</a>
Product Name	Mini-Fit TPA™

**Physical**

Color - Resin	Black
Gender	Male
Glow-Wire Compliant	No
Material - Resin	Polyester
Number of Rows	2
Packaging Type	Bag
Panel Mount	No, Yes
Pitch - Mating Interface (in)	0.165 In
Pitch - Mating Interface (mm)	4.20 mm
Stackable	No
Temperature Range - Operating	-40°C to +105°C

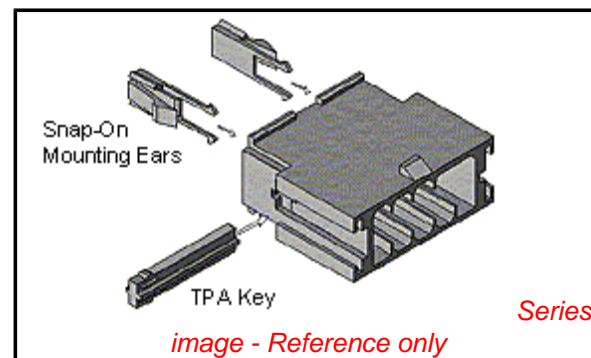
**Electrical**

Current - Maximum per Contact	13A
-------------------------------	-----

**Material Info**

**Reference - Drawing Numbers**

Packaging Specification	PK-43130-001
Sales Drawing	SD-43130-0001



*image - Reference only*

**EU RoHS**

**ELV and RoHS Compliant**  
**REACH SVHC**  
 Not Reviewed  
**Halogen-Free Status**  
 Not Reviewed

**China RoHS**



**Need more information on product environmental compliance?**

Email [productcompliance@molex.com](mailto:productcompliance@molex.com)  
 For a multiple part number RoHS Certificate of Compliance, [click here](#)

Please visit the [Contact Us](#) section for any non-product compliance questions.

**Search Parts in this Series**

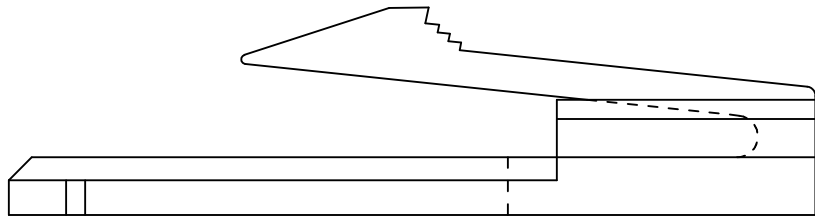
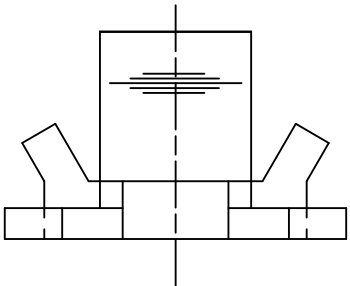
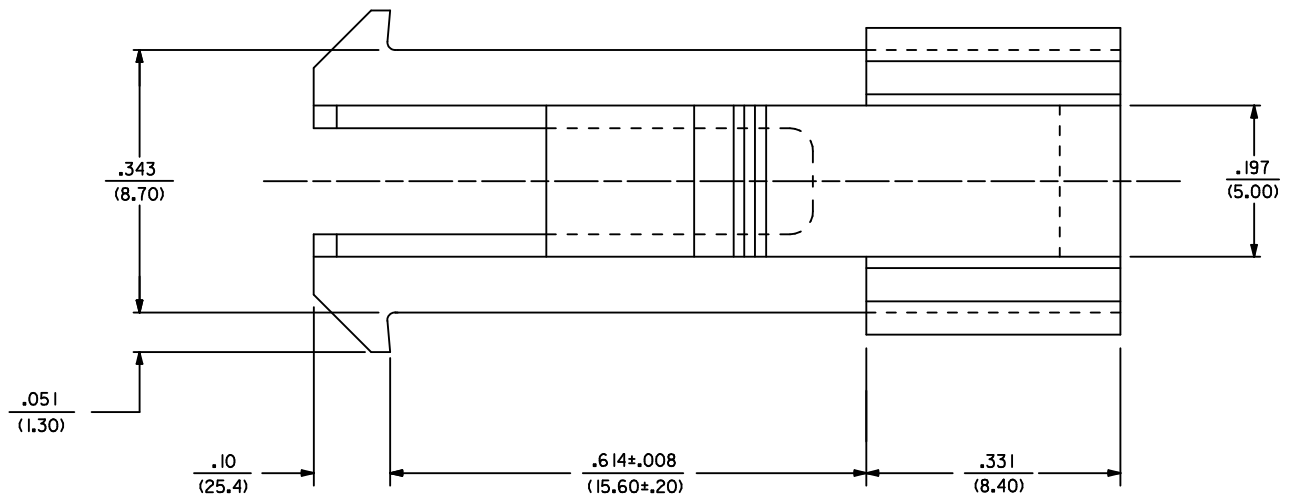
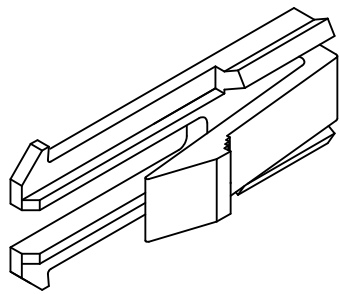
[43130Series](#)

**Mates With**

[30067](#)

**Use With**

[5558](#) , [44478](#) , [30490](#)



**NOTES:**

- 1) MATERIAL: UNFILLED POLYESTER, U.L. 94V-0, COLOR: BLACK.
- 2) PART IS FOR USE WITH PLUG HOUSING 30068.
- 3) PRODUCT SPECIFICATION: PS-5556-003.
- 4) PACKAGING SPECIFICATION: PK-43130-001.

ADDED PK-43130-001 EC NO: UCP2010-2159 DRWN: JAGUILAR 2010/02/25 CHKD: J BELL 2010/02/25 APPR: FSMITH 2010/03/08	QUALITY SYMBOLS ▽=0 ▽=0 ▽=0	GENERAL TOLERANCES (UNLESS SPECIFIED)		DIMENSION STYLE IN/MM		SCALE 8:1	DESIGN UNITS INCH	THIRD ANGLE PROJECTION			
				mm	INCH	DRAWN BY RJF	DATE 10/13/1992	TITLE MOUNTING EAR FOR PLUG HOUSING. (MINI-FIT T.P.A. SERIES)			
		4 PLACES ± --- ± ---		3 PLACES ± --- ± .010		CHECKED BY RJF		DATE 10/13/1992		MOLEX INCORPORATED	
		2 PLACES ± 0.25 ± .015		1 PLACE ± 0.38 ± ---		APPROVED BY FSMITH		DATE 10/13/1992			
ANGULAR ± 1/2°		DRAFT WHERE APPLICABLE MUST REMAIN WITHIN DIMENSIONS		MATERIAL NO. 43130-0001		DOCUMENT NO. SD-43130-0001		SHEET NO. 1 OF 1			
B1		SIZE C		THIS DRAWING CONTAINS INFORMATION THAT IS PROPRIETARY TO MOLEX INCORPORATED AND SHOULD NOT BE USED WITHOUT WRITTEN PERMISSION							