

PLEASE CHECK WWW.MOLEX.COM FOR LATEST PART INFORMATION

Part Number: [0749525906](#)
Status: **Active**
Overview: vhdm_hsd
Description: 2.00mm (.079") Pitch 5-Row VHDM-HSD™ Backplane Header, Polarizing Pin Module, Code Key F, 40 Circuits

Documents:

[Drawing \(PDF\)](#) [RoHS Certificate of Compliance \(PDF\)](#)
[Product Specification PS-74031-999 \(PDF\)](#)

General

| | |
|-------------------------------|---|
| Product Family | Backplane Connectors |
| Series | 74952 |
| Application | Backplane |
| Application Tooling Documents | Tooling Manual |
| Comments | Position F, PCB Thickness 4.00mm (.157") to 9.00mm (.354") |
| Component Type | PCB Header |
| Overview | vhdm_hsd |
| Product Name | VHDM-HSD™ |
| Style | N/A |

Physical

| | |
|--------------------------------|-----------------|
| Circuits (Loaded) | N/A |
| Durability (mating cycles max) | 200 |
| First Mate / Last Break | No |
| Guide to Mating Part | Yes |
| Keying to Mating Part | Yes |
| Material - Metal | Stainless Steel |
| Number of Columns | 6 |
| Number of Pairs | Open Pin Field |
| Number of Rows | 0 |
| Orientation | Vertical |
| PCB Locator | No |
| PCB Retention | None |
| PCB Thickness Recommended (in) | 0.071 In |
| PCB Thickness Recommended (mm) | 1.80 mm |
| Packaging Type | Bag |
| Pitch - Mating Interface (in) | 0.000 In |
| Pitch - Mating Interface (mm) | 0.00 mm |
| Polarized to PCB | Yes |
| Surface Mount Compatible (SMC) | Yes |
| Temperature Range - Operating | N/A |

Electrical

| | |
|-------------------------------|----------|
| Current - Maximum per Contact | N/A |
| Data Rate | 5.0 Gbps |
| Shield Type | N/A |
| Shielded | No |
| Voltage - Maximum | N/A |

Material Info

Reference - Drawing Numbers

| | |
|-----------------------|--------------|
| Product Specification | PS-74031-999 |
| Sales Drawing | SD-74952-002 |

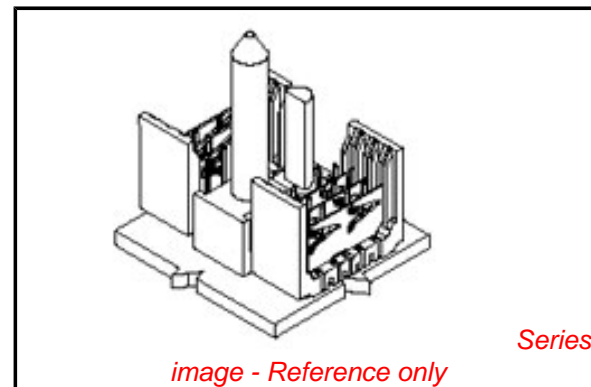


image - Reference only

EU RoHS **China RoHS**

Compliance Status

Not Reviewed

REACH SVHC

Not Reviewed

Halogen-Free

Status

Not Reviewed

Need more information on product environmental compliance?

Email productcompliance@molex.com
 For a multiple part number RoHS Certificate of Compliance, [click here](#)

Please visit the [Contact Us](#) section for any non-product compliance questions.

Search Parts in this Series









[74952Series](#)

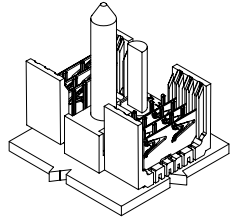
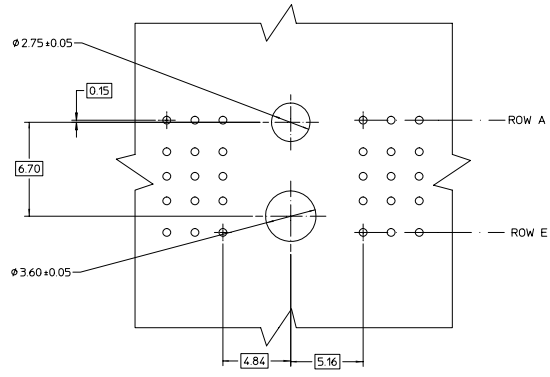
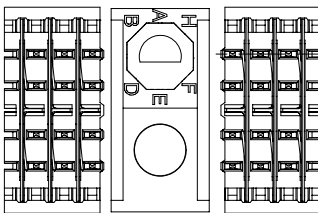
| VHDM-HSD is a trademark of Amphenol Corporation

This document was generated on 05/28/2010

PLEASE CHECK WWW.MOLEX.COM FOR LATEST PART INFORMATION

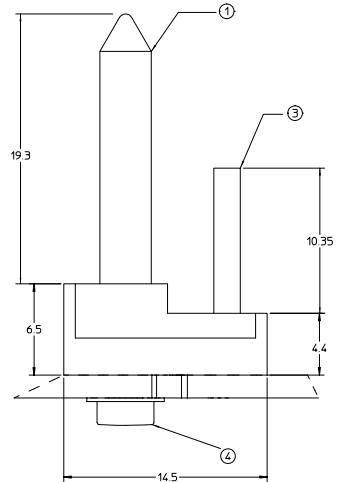
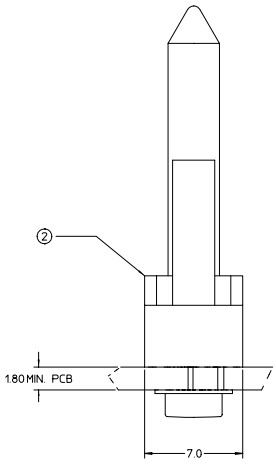
20 19 18 17 16 15 14 13 12 11 10 9 8 7 6 5 4 3 2 1

| MATERIAL NUMBER PCB THICKNESS >4.0 - 9.0 | MATERIAL NUMBER PCB THICKNESS 18 - 4.0 | BUSHING CLOCK POSITION |
|--|--|---|
| 74952-5901 | 74952-5001 | A  |
| 74952-5902 | 74952-5002 | B  |
| 74952-5903 | 74952-5003 | C  |
| 74952-5904 | 74952-5004 | D  |
| 74952-5905 | 74952-5005 | E  |
| 74952-5906 | 74952-5006 | F  |
| 74952-5907 | 74952-5007 | G  |
| 74952-5908 | 74952-5008 | H  |



BILL OF MATERIAL FOR 74952-50**

| ITEM | DESCRIPTION | QTY. |
|------|------------------------------|------|
| 1 | GUIDE PIN | 1 |
| 2 | GUIDANCE & POLARIZING MODULE | 1 |
| 3 | KEYING PIN | 1 |
| 4 | SCREW & WASHER (PCB 18-4.0) | 1 |



BILL OF MATERIAL FOR 74952-59**

| ITEM | DESCRIPTION | QTY. |
|------|-------------------------------|------|
| 1 | GUIDE PIN | 1 |
| 2 | GUIDANCE & POLARIZING MODULE | 1 |
| 3 | KEYING PIN | 1 |
| 4 | SCREW & WASHER (PCB >4.0-9.0) | 1 |

- NOTES:**
- MATERIAL:
HOUSING: LIQUID CRYSTAL POLYMER (LCP),
COLOR: BLACK
GUIDE PIN / KEYING PIN: STAINLESS STEEL
 - THIS PART CONFORMS TO MOLEX PRODUCT SPECIFICATION PS-74031-999.
 - PACKAGING: STANDARD BULK PACK, 100 PER BAG PACKAGE SCREW SEPARATELY.

| | | | | | | | |
|--|-----------------------------------|---------------------------------------|---------------------------|--|---------------------|---|--------------------|
| EC NO. UDT2002-0216 DRWN: LMSLEY 2001/12/19 CHKD: SREED 2001/12/19 APPR: CBIXLER 2001/12/20 | QUALITY SYMBOLS ▽ - 0 ▽ - 0 | GENERAL TOLERANCES (UNLESS SPECIFIED) | | SCALE 6:1 | DESIGN UNITS METRIC | THIRD ANGLE PROJECTION | REVISE ON CAD ONLY |
| | | 4 PLACES ± --- ± --- | 3 PLACES ± --- ± --- | DIMENSION STYLE MM ONLY | | | |
| | | 2 PLACES ± --- ± --- | 1 PLACE ± --- ± --- | DRAWN BY NMARTIN | DATE 01/12/11 | | |
| | | ANGULAR ± 2 ° | | CHECKED BY SREED | DATE 01/12/11 | | |
| DRAFT WHERE APPLICABLE MUST REMAIN WITHIN DIMENSIONS | | APPROVED BY CBIXLER | DATE 01/12/11 | TITLE BACKPLANE GUIDANCE AND POLARIZING MODULE 5 ROW HSD SALES DRAWING | | MOLEX MOLEX INCORPORATED | |
| | | MATERIAL NO. SEE CHART | DOCUMENT NO. SD-74952-002 | SHEET NO. 1 OF 1 | | THIS DRAWING CONTAINS INFORMATION THAT IS PROPRIETARY TO MOLEX INCORPORATED AND SHOULD NOT BE USED WITHOUT WRITTEN PERMISSION | |

1b_frame_D rev B 2000/06/12 19 18 17 16 15 14 13 12 11 10 9 8 7 6 5 4 3 2 1