

**PLEASE CHECK WWW.MOLEX.COM FOR LATEST PART INFORMATION**

**Part Number:** [1120005027](#)  
**Status:** **Active**  
**Description:** applicom® PCIE2000ETH Combo Ethernet 10/100 Mbps + Serial RS485/422 card, PCI Express 1x bus, RoHS compliant

**Documents:**

[Drawing \(PDF\)](#) [RoHS Certificate of Compliance \(PDF\)](#)

**General**

Product Family	Network Interface
Series	<a href="#">112000</a>
Approvals	CE
Communication Speed	Ethernet: 10/100 Mbps, Serial up to 38,400 bps
Mounting Style	N/A
Product Name	applicom®
Protocol	N/A
Type	PC Card

**Physical**

Channels	2
Interface	Ethernet - Serial
Network Connection Type	Ethernet: RJ45, Serial: D-Sub Male (9 pin)
Packaging Type	Carton
Processor	AMD SC520
Temperature Range - Operating	0°C to +65°C

**Electrical**

Current - Maximum Input	5.5W
EMC	EN 55022 Class B, EN 61000-3-2, EN 61000-3-3, EN 61000-6-2
Supply Voltage	N/A

**Material Info**

Old Part Number	APP-ESR-PCIE
-----------------	--------------

**Reference - Drawing Numbers**

Sales Drawing	E-112000-5026
---------------	---------------

**EU RoHS**

**ELV and RoHS  
Compliant**  
**REACH SVHC  
Not Reviewed**  
**Halogen-Free  
Status  
Not Reviewed**

**China RoHS**



**Need more information on product  
environmental compliance?**

Email [productcompliance@molex.com](mailto:productcompliance@molex.com)  
 For a multiple part number RoHS Certificate of Compliance, [click here](#)

Please visit the [Contact Us](#) section for any non-product compliance questions.

**Search Parts in this Series**  
[112000Series](#)



Connect your applications to industrial networks through Ethernet messaging.

# applicom<sup>®</sup> Ethernet PCIE2000ETH

Best choice for SCADA/HMI applications

## Features

- RoHS compliant
- All protocols included in the package
- Free full technical support during 2 years of hardware warranty
- On-board processor eliminates data bottle necks, ensuring delivery of time-critical information
- Certified with over 50 major SCADA/HMI packages
- Fast Ethernet 10/100, RJ-45 Port
- COMBO Offer =  
Ethernet + Profibus 1.5Mbps  
or  
Ethernet + Serial 38.4Kbps
- Simultaneously run all TCP/IP protocols in Client/Server modes
- Redundancy feature via OPC Server
- Win32 NDIS driver (using applicom<sup>®</sup> interface as a standard Ethernet card)
- Onboard internal data base (32 Kwords + 32 Kbits)

## Supported OS

Standard package

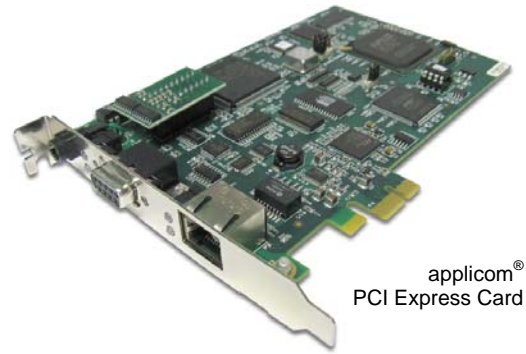
- Windows 32-bit (Vista / XP / 2003 Server)

Free Download

- Windows XP Embedded, VenturCom RTX, VxWorks, QNX, Linux, DOS

## Compatible with

- Altus
- GE Fanuc
- Mitsubishi Electric Automation
- Omron
- Rockwell Automation
- Schneider Electric
- Siemens



applicom<sup>®</sup>  
PCI Express Card

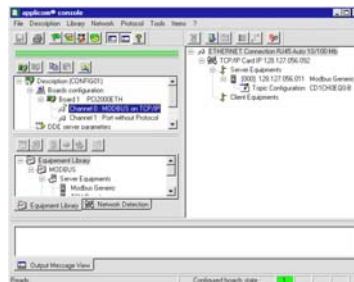
## Overview

applicom<sup>®</sup> is a range of intelligent communication solutions, complete and ready to use covering more than 40 protocols among a wide choice of industrial networks and fieldbuses: Ethernet TCP/IP, Profibus, Modbus Plus, Data Highway Plus, WorldFIP and Serial Links. These solutions connect your PC-based applications (HMI, SCADA, MES, custom applications) to industrial equipment (programmable controllers, I/O modules, devices...).

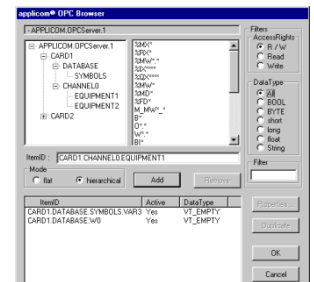
Thanks to applicom<sup>®</sup> smart built-in processor technology - each interface card is able to execute all management and the processing (polling, frame management, etc.) of communications protocols, resulting in extremely fast, efficient application performance.

The applicom<sup>®</sup> software package includes:

- Graphical configuration software.
- Test and network diagnostic tools.
- Data servers
  - ✓ OPC DA v1.0a, v2.05 and v3.0 (including an OPC client with its source code)
  - ✓ Wonderware I/O Server (DAServer, DDE, FastDDE, SuiteLink)
- Development libraries
  - ✓ DLL Library
  - ✓ MS Visual Studio (.NET/C#/VB/C++/C), Borland Delphi
  - ✓ National Instruments (LabWindows CVI, LabVIEW/VI)



- Configuration Software -



- OPC Server -



## Communication Ports

### 1 Ethernet port

<b>Port Type</b>	1 Ethernet port - IEEE 802.3 for industrial and office (NDIS driver for XP/2000/NT)
<b>Connector</b>	10/100baseT (RJ45)
<b>LED Indicators</b>	4 LEDs - TX, RX, Link, 100 Mbps
<b>Speed</b>	10/100 Mbps (Auto-negotiation)

+

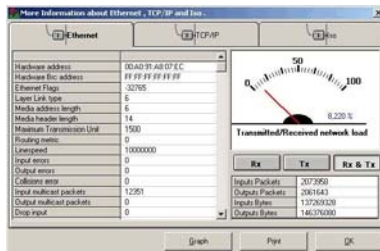
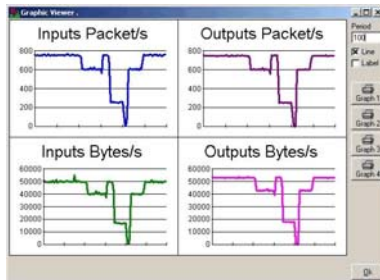
### 1 Profibus port

<b>Port Type</b>	1 Profibus port (EN 50 170)
<b>Connector</b>	D-Sub, 9 pin, female
<b>LED Indicators</b>	2 LEDs - TX / RX
<b>Electrical Interface</b>	RS485 with galvanic insulation (500 V)
<b>Speed</b>	9.6 Kbps to 1.5 Mbps

or

### 1 Serial port

<b>Port Type</b>	1 asynchronous serial port
<b>Connector</b>	D-Sub, 9 pin, male
<b>LED Indicators</b>	2 LEDs - TX / RX
<b>Electrical Interface</b>	RS485/RS422 with galvanic insulation (500 V)
<b>Speed</b>	50 bps to 38.400 Kbps



- Network Diagnostic Tools -

## Hardware Specifications

<b>Unit</b>	PCI Express 1x, rev 1.0a
<b>Processor</b>	AMD SC520 - 133 MHz
<b>Memory</b>	16 Mbytes SDRAM
<b>Flash Memory</b>	4 Mbytes
<b>Interruption</b>	Hardware Plug&Play
<b>DPRAM Address</b>	Hardware Plug&Play (32 Kbytes used per board)
<b>Digital I/O</b>	Opto-coupled discrete input Voltage -> DC +10 to +30 or AC 24 V (50 to 60 Hz) "Watchdog" output dry contact (24V DC, 0.25 A)
<b>Dimensions (L x W)</b>	168mm x 107mm (6.61" x 4.21")
<b>Consumption</b>	5.5 W
<b>Temperature</b>	Operating: 0° C (32° F) up to +65° C (149° F) Storage: -40° C (-40° F) up to +85° C (185° F)
<b>EMC Compliance</b>	EN55022 Class B, EN61000-6-2, EN61000-3-2, EN61000-3-3
<b>RoHS Compliant</b>	Yes

## Protocols (all included in the package)

<b>Ethernet TCP/IP</b>	<ul style="list-style-type: none"> <li>Allen-Bradley - <b>EtherNet/IP</b> (ControlLogix, PLC-5 &amp; SLC 500 Series)</li> <li>Alstom - <b>SRTP</b> (Alspa C80-35 and C80-75)</li> <li>Altus - <b>Alnet II</b> (AL2000 and WebGate Series)</li> <li>GE Fanuc - <b>SRTP</b> (90-30 and 90-70 Series)</li> <li>Mitsubishi - <b>Melsec</b> (A and Q Series)</li> <li>Omron - <b>FINS</b> (C, CV and CS Series)</li> <li>Schneider - <b>Open Modbus TCP</b> (TSX Premium, TSX Micro, etc)</li> <li>Schneider - <b>Uni-TE</b> (TSX Premium, TSX Micro, etc)</li> <li>Send/Receive on UDP (dev. free messaging on UDP)</li> <li>Siemens - <b>Industrial Ethernet</b> (S5, S7 and TI-505 Series)</li> <li>Development toolkit for TCP and UDP protocols in client/server modes</li> </ul>
<b>Ethernet</b>	<ul style="list-style-type: none"> <li>Schneider - <b>Ethway</b> (TSX Premium, TSX Micro, etc)</li> <li>Siemens - <b>Industrial Ethernet ISO</b> (S5, S7, TF and TI Series)</li> </ul>
<b>Profibus</b>	<ul style="list-style-type: none"> <li>Profibus-DP V0 Master Class-1 &amp; Class-2 - All DP slaves devices</li> <li>FDL for S5 Master - Siemens S5</li> <li>S7 / MPI Master - Siemens S7-300, S7-400</li> <li>Send/Rec on FDL - Develop your free messaging on Profibus-FDL</li> </ul>
<b>Serial</b>	3964/3964R, AS511, DataLink, DF1, Modbus, PPI/PPI+, Saia-BUS, SNP-X, Sucoma, Sysmac-Way, TI-Direct, Uni-Telway, and development toolkit for Serial protocols.

## Ordering Information

Part Number	SAP	Product description
<b>APP-ETH-PCIE</b>	1120005026	applicom <sup>®</sup> PCIE2000ETH <b>Ethernet</b> TCP/IP 10/100 Mbps card, PCI Express 1x bus, RoHS compliant
<b>APP-EPB-PCIE</b>	1120005028	applicom <sup>®</sup> PCIE2000ETH Combo <b>Ethernet</b> 10/100 Mbps + <b>Profibus</b> 1.5 MB card, PCI Express 1x bus, RoHS compliant
<b>APP-ESR-PCIE</b>	1120005027	applicom <sup>®</sup> PCIE2000ETH Combo <b>Ethernet</b> 10/100 Mbps + <b>Serial</b> RS485/422 card, PCI Express 1x bus, RoHS compliant

Other related products: IP67/IP20 Ethernet switches, Software solution based on standard Ethernet card, Ethernet I/O for control/command, Ethernet connectivity.

To contact us: [www.woodhead.com](http://www.woodhead.com)

Reference Number: DW2008256 Date Published: January 2009

**North America:** US: + 1 800 225 7724 – Canada: +1 519 725 5136

**Europe:** France: +33 2 32 96 04 20 – Germany: +49 7252 94 96 0– Italy: +39 010 59 30 77 – United: Kingdom +44 1495 356300

**Asia:** Shanghai, China: +86 21-5835-9885 - Tianjin, China: +86 22-23321717

Singapore: +65 6268-6868 – Yamato, Japan: +81 46-265-2428 – Nagoya, Japan: +81 52-221-5950

Brad and applicom are registered trademarks and BradCommunications is a trademark of Molex Incorporated.  
© 2009 Molex.