

PLEASE CHECK WWW.MOLEX.COM FOR LATEST PART INFORMATION

Part Number: [0524180410](#)
Status: **Active**
Description: 2.00mm (.079") Pitch Board-to-Board Receptacle, Right Angle, Single Row, Friction Lock, 4 Circuits

Documents:

[3D Model](#)
[Drawing \(PDF\)](#)
[Product Specification PS-52418-002 \(PDF\)](#)
[Product Specification PS-52418-003 \(PDF\)](#)
[RoHS Certificate of Compliance \(PDF\)](#)

General

Product Family PCB Receptacles
 Series [52418](#)
 Application Board-to-Board
 Product Name N/A

Physical

Circuits (Loaded) 4
 Color - Resin Natural
 Durability (mating cycles max) 30
 Glow-Wire Compliant No
 Material - Metal Phosphor Bronze
 Material - Plating Mating Tin
 Material - Plating Termination Tin
 Material - Resin Polyester
 Number of Rows 1
 Orientation Right Angle
 PCB Locator No
 PCB Retention Yes
 PCB Thickness Recommended (in) 0.062 In
 PCB Thickness Recommended (mm) 1.60 mm
 Packaging Type Tray
 Pitch - Mating Interface (in) 0.079 In
 Pitch - Mating Interface (mm) 2.00 mm
 Plating min: Mating (µin) 36
 Plating min: Mating (µm) 0.90
 Plating min: Termination (µin) 36
 Plating min: Termination (µm) 0.90
 Polarized to PCB No
 Surface Mount Compatible (SMC) No
 Temperature Range - Operating -40°C to +105°C
 Termination Interface: Style Through Hole - Kinked Pin

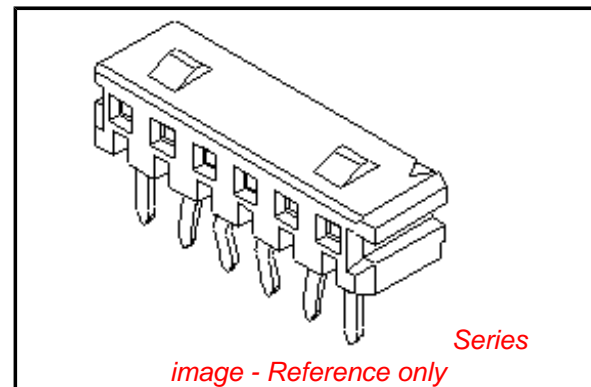
Electrical

Current - Maximum per Contact 1.5A
 Voltage - Maximum 125V

Material Info

Reference - Drawing Numbers

Product Specification PS-52418-002, PS-52418-003, RPS-52418-001, RPS-52418-004
 Sales Drawing SD-52418-**10



EU RoHS

ELV and RoHS Compliant
REACH SVHC
Contains SVHC: No
Halogen-Free Status

China RoHS



Need more information on product environmental compliance?

Email productcompliance@molex.com
 For a multiple part number RoHS Certificate of Compliance, [click here](#)

Please visit the [Contact Us](#) section for any non-product compliance questions.

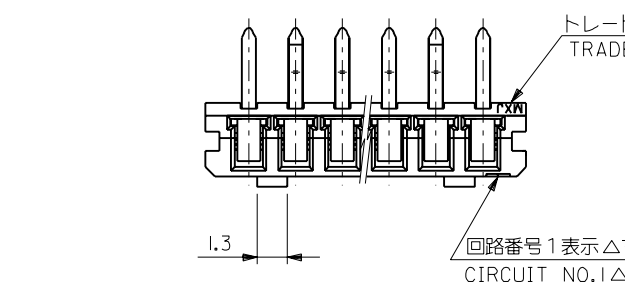
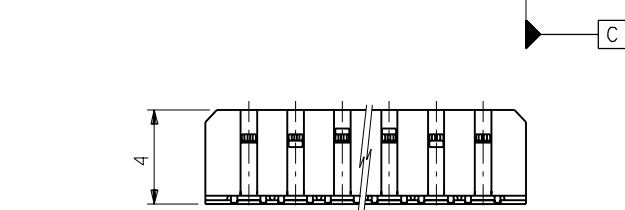
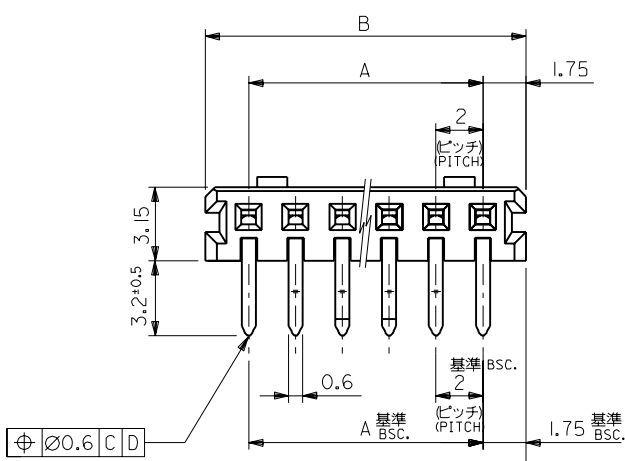
Search Parts in this Series

[52418Series](#)

Mates With

[53290](#)

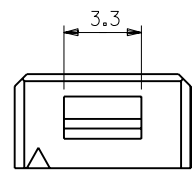
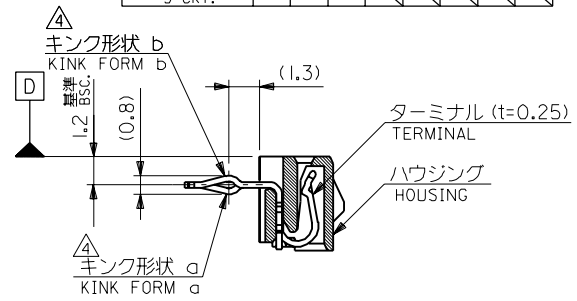
PLEASE CHECK WWW.MOLEX.COM FOR LATEST PART INFORMATION



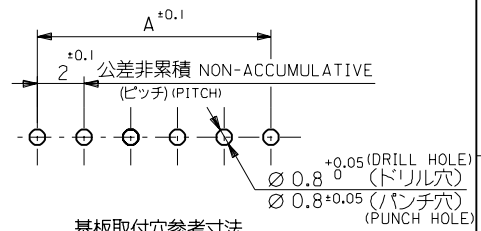
注記 NOTES

- 材料 MATERIAL
ハウジング: PBT (ガラス15%入り), UL94V-0
HOUSING G.F.15%
ターミナル: リン青銅, 錫メッキ
TERMINAL PHOS.BRO. PRE-TINNED
- 嵌合相手: 53290-***10, -***20
MATES WITH
- 各部のソリは0.2MAX.
CAMBER: 0.2MAX.
キックは、下記表の位置に付加。
KINK TO BE APPLIED AS FOLLOWS.
(N: 極数 CKT.)

| 極数 CKT. | 回路番号 Ckt. No. | 1 | 2 | 3 | 4 | 5 | N-2 | N-1 | N |
|--------------------------|------------------|---|---|---|---|---|-----|-----|---|
| 6極以上 MORE THAN 6 CKT. | | - | a | b | - | - | b | a | - |
| 5極 5 CKT. | | a | b | - | b | a | | | |
| 4極 4 CKT. | | a | b | b | a | | | | |
| 3極 3 CKT. | | a | b | a | | | | | |



3極の場合
IN CASE OF
3 CIRCUIT HOUSING



基板取付穴参考寸法
RECOMMENDED P.C.B. BOARD
HOLE DIM.(REFERENCE)
(t = 1.6)

| | | | |
|------|----|------------|------------|
| 41.5 | 38 | 52418-2010 | 20 |
| 39.5 | 36 | -1910 | 19 |
| 37.5 | 34 | -1810 | 18 |
| 35.5 | 32 | -1710 | 17 |
| 33.5 | 30 | -1610 | 16 |
| 31.5 | 28 | -1510 | 15 |
| 29.5 | 26 | -1410 | 14 |
| 27.5 | 24 | -1310 | 13 |
| 25.5 | 22 | -1210 | 12 |
| 23.5 | 20 | -1110 | 11 |
| 21.5 | 18 | -1010 | 10 |
| 19.5 | 16 | -0910 | 9 |
| 17.5 | 14 | -0810 | 8 |
| 15.5 | 12 | -0710 | 7 |
| 13.5 | 10 | -0610 | 6 |
| 11.5 | 8 | -0510 | 5 |
| 9.5 | 6 | -0410 | 4 |
| 7.5 | 4 | 52418-0310 | 3 |
| | B | A | 極数 CKT. |

| 角度 ANGLE | 変更 REVISIED | 変更 REVISIED | 変更 REVISIED | 新規作成 RELEASED | 記号 LTR | 変更内容 REVISION RECORD | DR. CHK. | 日付 DATE |
|-------------------------|-------------|-------------|------------------------|---------------|--------|----------------------|----------|---------|
| 30以上 OVER | +3° | B | 変更 REVISIED (J10812) | T.I. | | | | 93/9/23 |
| 10以上 30未満 OVER | +0.3 | A | 変更 REVISIED (J00866) | T.I. | | | | 90/8/21 |
| 10未満 UNDER | +0.25 | O | 新規作成 RELEASED (J00558) | S.A. | | | | 90/7/12 |
| 一般公差 GENERAL TOLERANCES | +0.2 | | | | | | | |

| | |
|-------------------|-------------------|
| 材料 MATERIAL | 注記参照 SEE NOTES |
| 仕上げ FINISH | — / — |
| 適用電線範囲 WIRE RANGE | — / — |
| 被覆外径 INS. RANGE | — / — |
| DRAWN BY '90/7/11 | CHK'D BY '93/9/23 |
| S. AIHARA | T. ITO |
| APP'D BY '93/9/23 | 尺度 SCALE |
| M. FUKUSHIMA | — / — |

| | |
|--------------------------------------|---|
| MOLEX JAPAN CO., LTD. 日本モレックス株式会社 | |
| EDP NO. | REV C |
| ENG. NO. SD-52418-***10 | TITLE 名称 2.0 BOARD TO BOARD CONN. HOUSING ASS'Y (R/A) |