

PLEASE CHECK WWW.MOLEX.COM FOR LATEST PART INFORMATION

Part Number: [0919150001](#)
Status: **Active**
Description: 2.54mm (.100") Pitch SIM Card Connector, Lead Free

Documents:

[3D Model](#) [Product Specification PS-91915-001 \(PDF\)](#)
[Drawing \(PDF\)](#) [RoHS Certificate of Compliance \(PDF\)](#)

General

Product Family	Memory Card Sockets
Series	91915
Button Type	N/A
Component Type	I/O Header (Card)
Product Name	SIM
Type	N/A

Physical

Card Detection Switch	Yes
Circuits (Loaded)	6
Color - Resin	Black
Durability (mating cycles max)	10,000
Ejector Button Side	No Ejector Button Present
Entry Angle	Vertical
Keying to Mating Part	Yes
Material - Metal	Phosphor Bronze
Material - Plating Mating	Gold
Material - Plating Termination	Tin
Material - Resin	High Temperature Thermoplastic
PCB Mounting Side	Reverse
PCB Retention	None
Packaging Type	Embossed Tape on Reel
Pitch - Mating Interface (in)	0.100 In
Pitch - Mating Interface (mm)	2.54 mm
Plating min: Mating (µin)	4
Plating min: Mating (µm)	0.1
Plating min: Termination (µin)	120
Plating min: Termination (µm)	3
Ports	8
Temperature Range - Operating	-40°C to +85°C
Termination Interface: Style	Surface Mount

Electrical

Current - Maximum per Contact	0.5A
Voltage - Maximum	15V

Solder Process Data

Lead-free Process Capability	Reflow Capable (SMT only)
Max. Cycles at Max. Process Temperature	2
Process Temperature max. C	240

Material Info

Reference - Drawing Numbers

Product Specification	PS-91915-001
Sales Drawing	SD-91915-001, SD-91915-003

EU RoHS

**ELV and RoHS
Compliant**

REACH SVHC

Contains SVHC: No

Halogen-Free

Status

Not Reviewed

China RoHS



**Need more information on product
environmental compliance?**

Email productcompliance@molex.com
 For a multiple part number RoHS Certificate of
 Compliance, [click here](#)

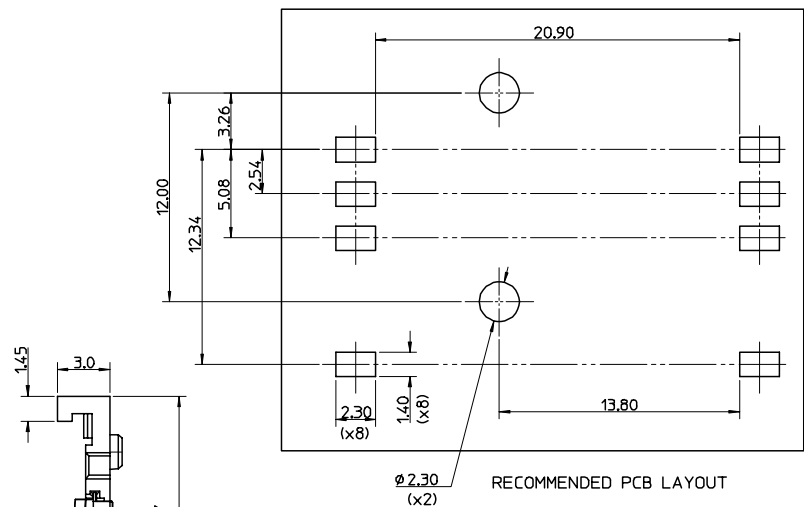
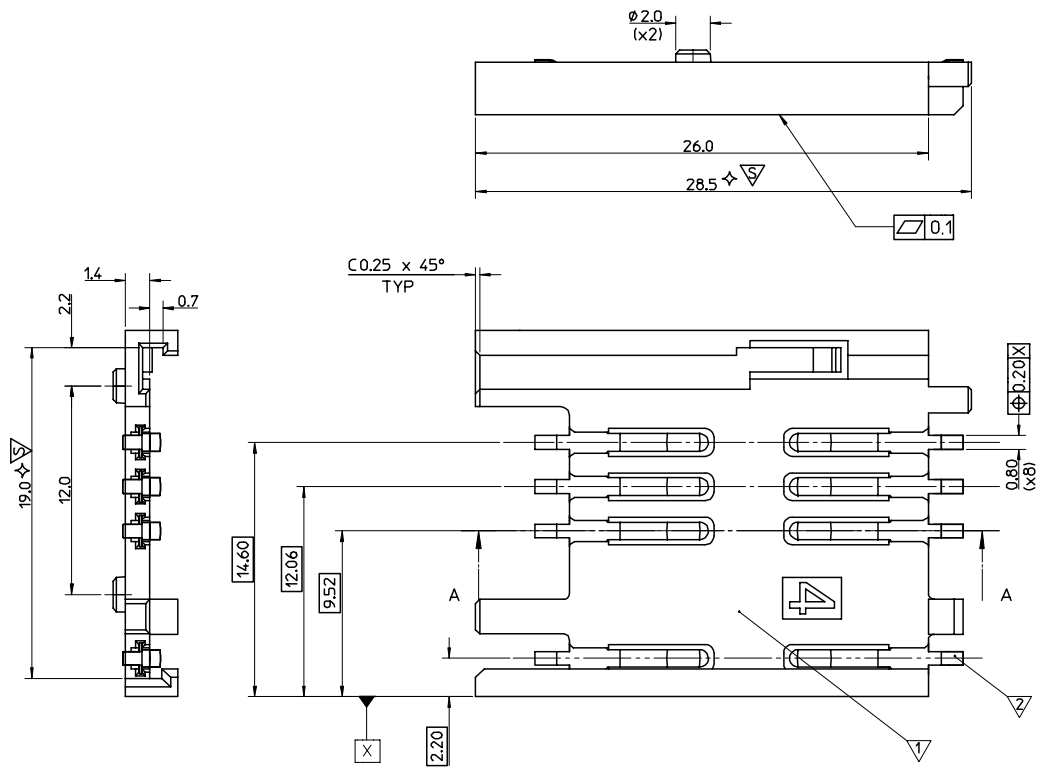
Please visit the [Contact Us](#) section for any
 non-product compliance questions.

Search Parts in this Series

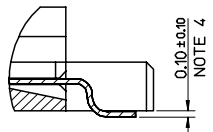
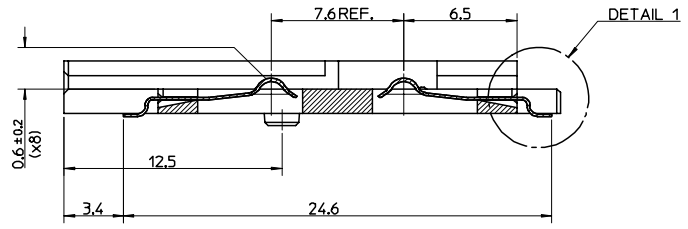
[91915Series](#)

This document was generated on 04/13/2010

PLEASE CHECK WWW.MOLEX.COM FOR LATEST PART INFORMATION

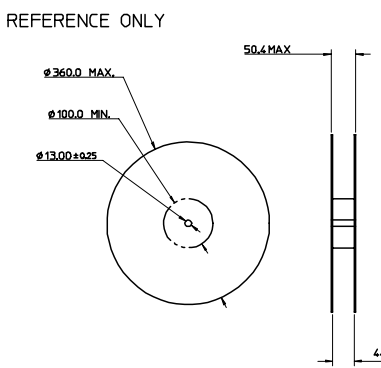
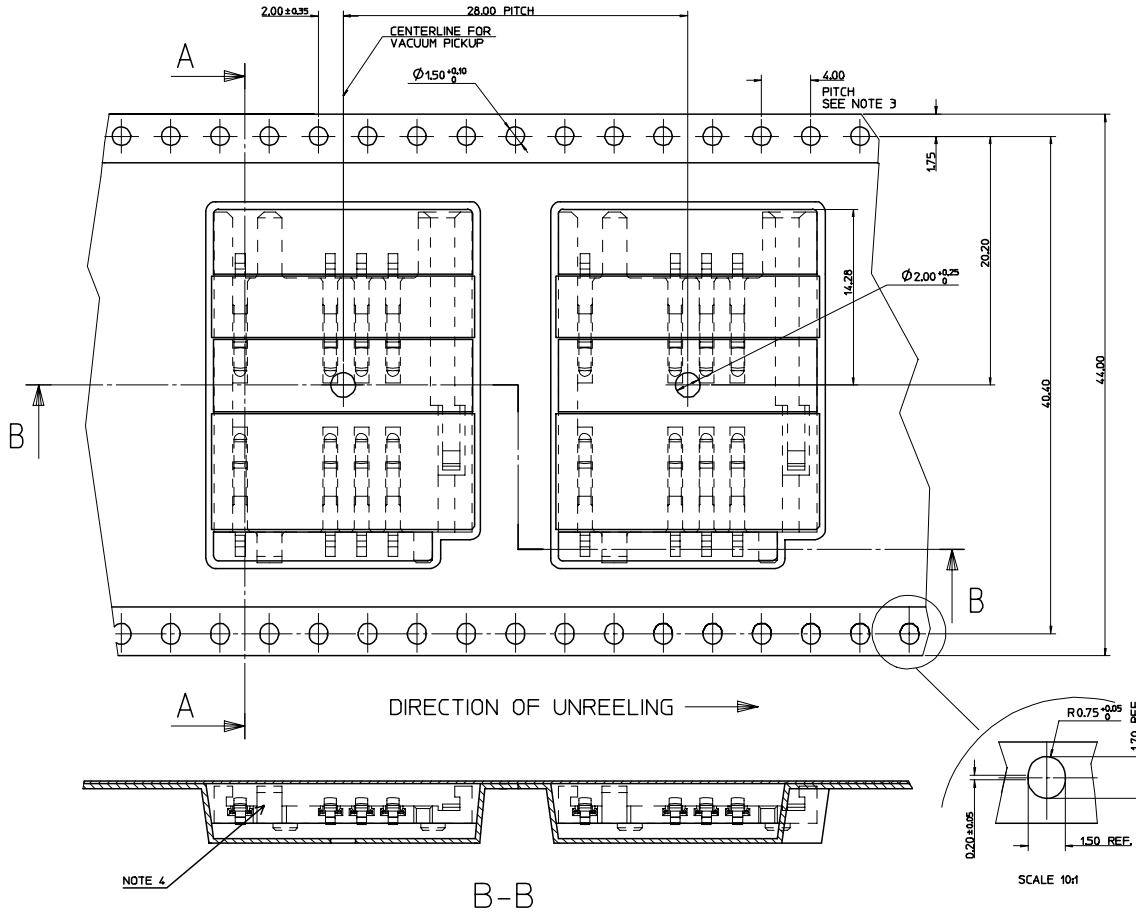
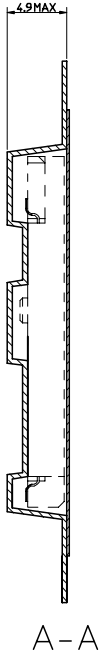
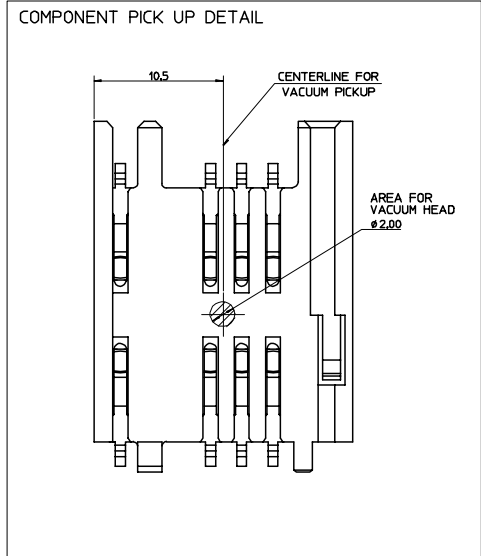


- NOTES:
1. PACKAGING: PARTS TO BE PACKAGED IN TAPE & REEL. SEE DRAWING SD-91915-003
 2. SEE PRODUCT SPECIFICATION PS-91915-001
 3. ⚡ THIS IS A CUSTOMER SPECIFIC SYMBOL
 4. TAILS ON EACH SIDE OF CONNECTOR TO LIE WITHIN 0.12mm OF EACH OTHER.



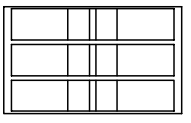
ITEM	COMPONENT	QTY	MATERIAL
▽	HOUSING	1	LCP E130i, UL94 V-0, COLOUR BLACK RoHS & LEAD FREE COMPLIANT
▽	TERMINAL	8	0.15 PHOSPHOR BRONZE Au FLASH OVER Pd/Ni Sn ON SMT TAILS

ORIGINAL RELEASE EIC NO: E2006-1110 DRAWN: CARTON 2007/02/14 CHKD: 2007/02/15 APPR: EFOLAN 2007/02/23 REV A	QUALITY SYMBOLS ▽=0 ▽=0 ▽=3	GENERAL TOLERANCES (UNLESS SPECIFIED) <table border="1"> <tr> <th></th> <th>mm</th> <th>INCH</th> </tr> <tr> <td>4 PLACES</td> <td>± 0.10</td> <td>± 0.004</td> </tr> <tr> <td>3 PLACES</td> <td>± 0.15</td> <td>± 0.006</td> </tr> <tr> <td>2 PLACES</td> <td>± 0.25</td> <td>± 0.010</td> </tr> <tr> <td>1 PLACE</td> <td>± 0.50</td> <td>± 0.020</td> </tr> </table> ANGULAR ± 2°		mm	INCH	4 PLACES	± 0.10	± 0.004	3 PLACES	± 0.15	± 0.006	2 PLACES	± 0.25	± 0.010	1 PLACE	± 0.50	± 0.020	DIMENSION STYLE MM ONLY	SCALE 1:1	DESIGN UNITS METRIC	THIRD ANGLE PROJECTION
		mm	INCH																		
	4 PLACES	± 0.10	± 0.004																		
	3 PLACES	± 0.15	± 0.006																		
2 PLACES	± 0.25	± 0.010																			
1 PLACE	± 0.50	± 0.020																			
DRAWN BY: DMAHER DATE: 2006/11/28 CHECKED BY: FDUGGAN DATE: 2006/11/28 APPROVED BY: EFOLAN DATE: 2006/11/28		TITLE 2.54 PITCH SIM CONNECTOR		MOLEX INCORPORATED																	
MATERIAL NO. 91915 0001 DOCUMENT NO. SD-91915-001		DRAFT WHERE APPLICABLE MUST REMAIN WITHIN DIMENSIONS		SHEET NO. 1 OF 1																	
THIS DRAWING CONTAINS INFORMATION THAT IS PROPRIETARY TO MOLEX INCORPORATED AND SHOULD NOT BE USED WITHOUT WRITTEN PERMISSION																					



REEL DIMENSIONS
NOT TO SCALE

15001 PIECES ON A REEL
(3) REELS / CARDBOARD BOX
(15001) PIECES / CARDBOARD BOX - SUBJECT TO CHANGE



- NOTES:
- MATERIAL:
CARRIER TAPE: VOLUME CONDUCTIVE POLYSTYRENE, 0.40 REF THICK, BLACK
COVER TAPE: COLD SEAL POLYESTER, 0.06 REF THICK, TRANSPARENT
 - PEEL FORCE OF THE COVER TAPE IS 0.1N TO 1.0N
AT MAXIMUM PEEL SPEED OF 300mm/min. ±10%
 - PITCH TOLERANCE OVER ANY 10 PITCHES ±0.2
 - TAPE & REEL PACKAGING FOR PART NUMBERS 919150001 & 919150002.

TO CUSTOMER ASSEMBLY MACHINE →

ORIGINAL RELEASE EC NO: E2006-110 DRAWING/CARTON 2007/02/14 CHKD: APPR:	QUALITY SYMBOLS	GENERAL TOLERANCES (UNLESS SPECIFIED)	SCALE 4:1	DESIGN UNITS METRIC	THIRD ANGLE PROJECTION	REVISE ON CAD ONLY																		
	DESCRIPTION MOLEX REEL	<table border="1"> <tr> <th></th> <th>mm</th> <th>INCH</th> </tr> <tr> <td>4 PLACES</td> <td>±---</td> <td>±---</td> </tr> <tr> <td>3 PLACES</td> <td>±---</td> <td>±---</td> </tr> <tr> <td>2 PLACES</td> <td>±0.10</td> <td>±---</td> </tr> <tr> <td>1 PLACE</td> <td>±0.2</td> <td>±---</td> </tr> <tr> <td colspan="3">ANGULAR ± 2°</td> </tr> </table>		mm	INCH	4 PLACES	±---	±---	3 PLACES	±---	±---	2 PLACES	±0.10	±---	1 PLACE	±0.2	±---	ANGULAR ± 2°			DIMENSION STYLE MM ONLY	TITLE BLISTER PACKAGING SIM CONNECTOR		
			mm	INCH																				
		4 PLACES	±---	±---																				
3 PLACES	±---	±---																						
2 PLACES	±0.10	±---																						
1 PLACE	±0.2	±---																						
ANGULAR ± 2°																								
<table border="1"> <tr> <td>DRAWN BY</td> <td>DATE</td> </tr> <tr> <td>DMAHER</td> <td>2006/11/28</td> </tr> <tr> <td>CHECKED BY</td> <td>DATE</td> </tr> <tr> <td>FDUGGAN</td> <td>2006/11/28</td> </tr> <tr> <td>APPROVED BY</td> <td>DATE</td> </tr> <tr> <td>EFOLAN</td> <td>2006/11/28</td> </tr> </table>	DRAWN BY	DATE	DMAHER	2006/11/28	CHECKED BY	DATE	FDUGGAN	2006/11/28	APPROVED BY	DATE	EFOLAN	2006/11/28	MATERIAL NO. SD-91915-003 NOTE 4		DOCUMENT NO. SD-91915-003	SHEET NO. 1 OF 1								
DRAWN BY	DATE																							
DMAHER	2006/11/28																							
CHECKED BY	DATE																							
FDUGGAN	2006/11/28																							
APPROVED BY	DATE																							
EFOLAN	2006/11/28																							
DRAFT WHERE APPLICABLE MUST REMAIN WITHIN DIMENSIONS	THIS DRAWING CONTAINS INFORMATION THAT IS PROPRIETARY TO MOLEX INCORPORATED AND SHOULD NOT BE USED WITHOUT WRITTEN PERMISSION																							