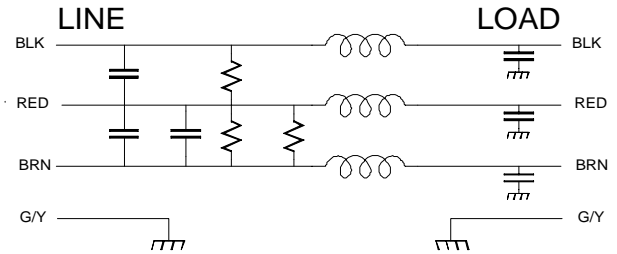


Operating Voltage = 250/480 V~, 50 / 60 Hz
Operating Voltage = 125/208 V~, 50 – 400 Hz
Operating Current = 10 A / Phase
Temperature Range = -20 TO 50 Deg. C
Diel. Withstand (L-CASE) = 1500 V~ FOR 1 MIN.
Diel. Withstand (L-L) = 1500 Vdc For 1 Min.
Leakage Current = 3.4 ma @ 250 V~, 60 Hz
Discharge Volt after 1.0 second = 34 V Max.
Maximum Capacitance each line to case = 0.016 μ F

Order P/N: FF-1585-10



The FF-1585-10 is a delta configuration, 3-phase filter designed for use with large computers, power distribution units, motor installations, etc.
The compact size and leads make the filter package easy to install where size is at a premium.

