

PLEASE CHECK WWW.MOLEX.COM FOR LATEST PART INFORMATION

Part Number: [0190220004](#)
Status: **Active**
Description: Krimptite™ Quick Disconnect, Male, for 18-22 (0.80-0.35) Wire, Box, Tab 6.35mm (.250") x 0.81mm (.032")

Documents:

[Drawing \(PDF\)](#) [RoHS Certificate of Compliance \(PDF\)](#)

Agency Certification

CSA LR18689
 UL E79133

General

Product Family Quick Disconnects
 Series [19022](#)
 Comments Economical
 Crimp Quality Equipment Yes
 MolexKits Yes
 Product Name Krimptite™
 Type Quick Disconnect

Physical

Barrel Type Closed
 Gender Male
 Glow-Wire Compliant No
 Insulation None
 Lock to Mating Part None
 Material - Metal Copper
 Material - Plating Mating Gold
 Material - Plating Termination 90/10 Tin Lead, 90/10 Tin-Lead
 Orientation Straight
 Packaging Type Bag
 Plating min: Mating (µin) 30
 Plating min: Mating (µm) 0.75
 Plating min: Termination (µin) 160
 Plating min: Termination (µm) 4
 Polarized to Mating Part No
 Tab Thickness 0.81mm (.032")
 Tab Width 6.35mm (.250")
 Temperature Range - Operating Per Wire Specification
 Wire Size AWG 18, 20, 22
 Wire Size mm² 0.35 - 0.80

Electrical

Voltage - Maximum Per Wire Specification

Material Info

Old Part Number AMCT-1

Reference - Drawing Numbers

Sales Drawing SD-19022-006

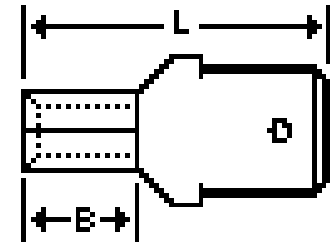


image - Reference only

—Series

EU RoHS

ELV and RoHS Compliant

REACH SVHC

Not Reviewed

Halogen-Free

Status

Not Reviewed

China RoHS



Need more information on product environmental compliance?

Email productcompliance@molex.com
 For a multiple part number RoHS Certificate of Compliance, [click here](#)

Please visit the [Contact Us](#) section for any non-product compliance questions.

Search Parts in this Series

[19022Series](#)

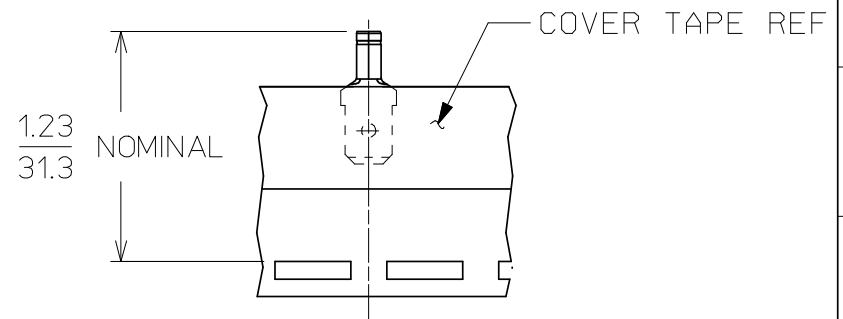
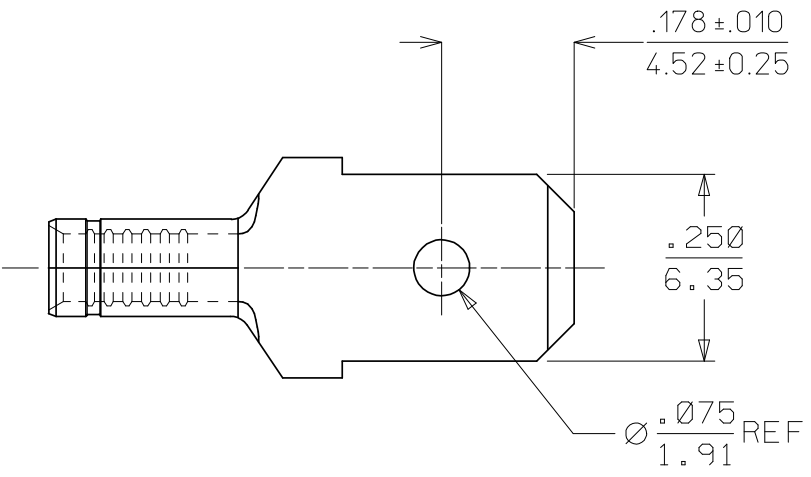
Application Tooling | FAQ

Tooling specifications and manuals are found by selecting the products below. Crimp Height Specifications are then contained in the Application Tooling Specification document.

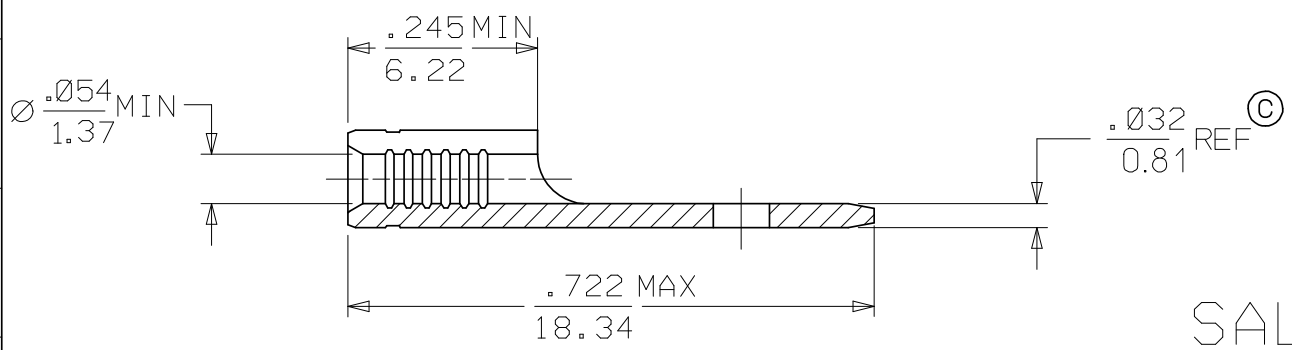
Global

| Description | Product # |
|--|----------------------------|
| Hand Crimp Tool | 0640030100 |
| Hand Crimp Tool | 0640031200 |
| Crimp Head for the AT-200™ Pneumatic Hand Tool | 0640070100 |
| Crimp Head for the AT-200™ Pneumatic Hand Tool | 0640071200 |

| | | | | | | | | | | | | |
|-----------------|----|--------------------|------------------------------------|---|---|---|---|---|---|---|---|---|
| 13 | 12 | 11 | 10 | 9 | 8 | 7 | 6 | 5 | 4 | 3 | 2 | 1 |
| MATERIAL NUMBER | | ENGINEERING NUMBER | DESCRIPTION | | | | | | | | | |
| 190220004 | | AMCT-I | ZINC CHROMATE PLATED | | | | | | | | | |
| 190220010 | | AMCT-IT | ZINC CHROMATE PLATED, TAPE MOUNTED | | | | | | | | | |



TAPE MOUNTING LOCATION FOR 190220010, AMCT-1T



SALES DRAWING

- NOTES:
1. MATERIAL: BRASS ©
 2. FINISH: SEE CHART
 3. WIRE SIZE: 22-18 AWG (0.38 - 0.96 mm²)
 4. TAB DIMENSIONS CONFORM TO UL310 SPECIFICATIONS.
 5. PART IS ROHS COMPLIANT. ©

| CHANGED MATL & FINISH EC NO: EITC2007-0081 DRAWN: HEILE 2008/01/28 CHKD: JMACNEIL 2008/01/28 APPR: JMACNEIL 2008/02/13 | QUALITY SYMBOLS | GENERAL TOLERANCES (UNLESS SPECIFIED) | DIMENSION STYLE | SCALE | DESIGN UNITS | THIRD ANGLE PROJECTION | | | | | | | | | | | | | | | |
|--|--------------------------|--|---|--------------------|--------------|------------------------|------|------|----------|------|-------|----------|-------|------|---------|-------|------|-------|-----|------|--|
| | $\nabla=0$ $\nabla=0$ | <table border="1"> <tr> <th></th> <th>mm</th> <th>INCH</th> </tr> <tr> <td>4 PLACES</td> <td>±---</td> <td>±---</td> </tr> <tr> <td>3 PLACES</td> <td>±---</td> <td>±.005</td> </tr> <tr> <td>2 PLACES</td> <td>±0.13</td> <td>±.01</td> </tr> <tr> <td>1 PLACE</td> <td>±0.25</td> <td>±---</td> </tr> </table> | | mm | INCH | 4 PLACES | ±--- | ±--- | 3 PLACES | ±--- | ±.005 | 2 PLACES | ±0.13 | ±.01 | 1 PLACE | ±0.25 | ±--- | IN/MM | 4:1 | INCH | |
| | | mm | INCH | | | | | | | | | | | | | | | | | | |
| | 4 PLACES | ±--- | ±--- | | | | | | | | | | | | | | | | | | |
| 3 PLACES | ±--- | ±.005 | | | | | | | | | | | | | | | | | | | |
| 2 PLACES | ±0.13 | ±.01 | | | | | | | | | | | | | | | | | | | |
| 1 PLACE | ±0.25 | ±--- | | | | | | | | | | | | | | | | | | | |
| DESCRIPTION | APPROVED BY | DATE | TITLE | MOLEX INCORPORATED | | | | | | | | | | | | | | | | | |
| REV | RWD | 1/07/02 | MALE CONNECTOR TERMINAL .250 X .032 TAB KRIMPTITE | DOCUMENT NO. | SHEET NO. | | | | | | | | | | | | | | | | |
| | | | SEE CHART | SD-19022-006 | 1 OF 1 | | | | | | | | | | | | | | | | |
| | | | DRAFT WHERE APPLICABLE MUST REMAIN WITHIN DIMENSIONS | | | | | | | | | | | | | | | | | | |
| | | | THIS DRAWING CONTAINS INFORMATION THAT IS PROPRIETARY TO MOLEX INCORPORATED AND SHOULD NOT BE USED WITHOUT WRITTEN PERMISSION | | | | | | | | | | | | | | | | | | |