

PLEASE CHECK WWW.MOLEX.COM FOR LATEST PART INFORMATION

Part Number: [0191600071](#)
Status: **Active**
Description: CLOSED END CONNECTOR TAPED (NC-2212T)

Agency Certification

CSA LR18689
 UL E32244

General

Product Family Splices
 Series [19160](#)
 Crimp Quality Equipment Yes
 Mil-Spec N/A
 Product Name Closed-End Insulated

Physical

Barrel Type Closed
 Flammability 94V-2
 Insulation Nylon (PA)
 Packaging Type Adhesive Tape on Reel
 Temperature Range - Operating 105°C
 Wire Insulation Diameter 6.9mm (.27") max
 Wire Size AWG 12, 14, 16, 18, 20, 22
 Wire Size mm² 0.25 - 4.00

Electrical

Voltage - Maximum 600V

Material Info

Old Part Number NC-2212T

Reference - Drawing Numbers

Product Specification PS-19160-006
 Sales Drawing SD-19160-001

EU RoHS

**ELV and RoHS
Compliant**

REACH SVHC

Not Reviewed

Halogen-Free

Status

Not Reviewed

China RoHS



**Need more information on product
environmental compliance?**

Email productcompliance@molex.com
 For a multiple part number RoHS Certificate of
 Compliance, [click here](#)

Please visit the [Contact Us](#) section for any
 non-product compliance questions.

Search Parts in this Series

[19160Series](#)

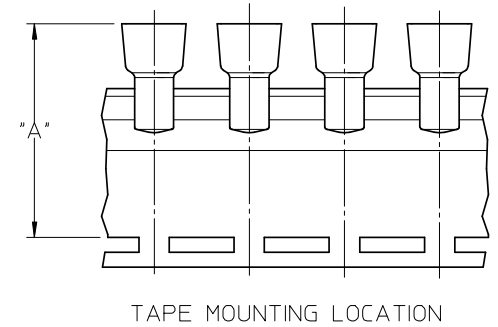
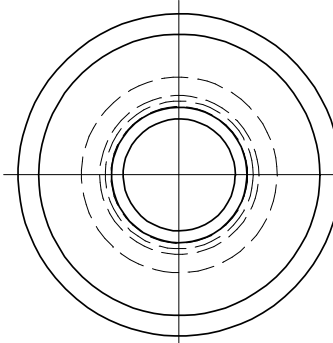
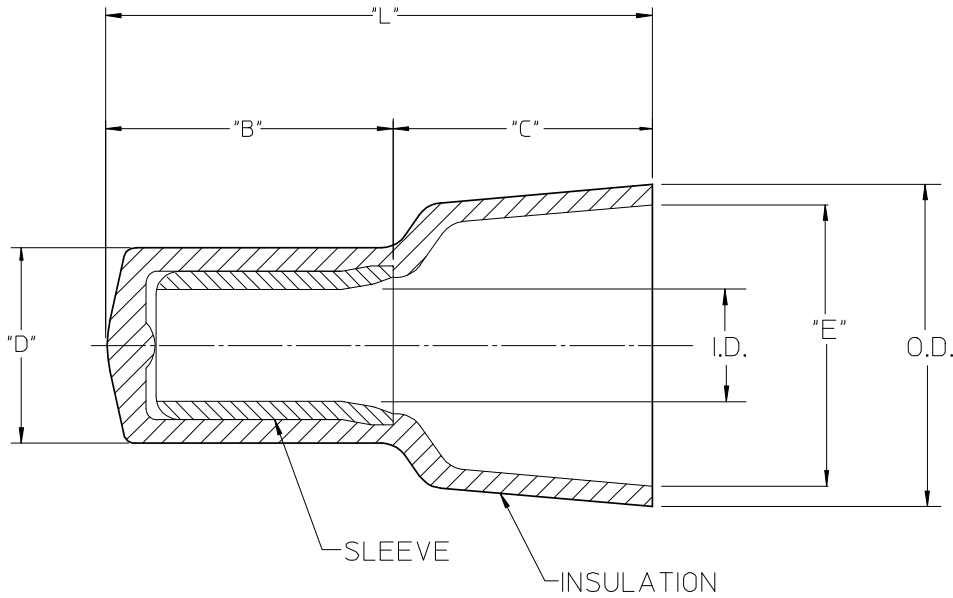
Application Tooling | FAQ

*Tooling specifications and manuals are
found by selecting the products below.
Crimp Height Specifications are then
contained in the Application Tooling
Specification document.*

Global

| Description | Product # |
|--|----------------------------|
| Crimp Dies for MTA-100 Tape Applicator used in 3BF Press, MTA-105 Tape Applicator used in TM-2000™ Press, and ATP-301 Air Crimping Press for Mylar Tape Mounted Terminals | 0192880239 |
| Mini-Mac™ Applicator | 0638853500 |

| LOOSE PIECE | | TAPE MOUNTED | | "L" MAX. | "B" ±.010/0.25 | "D" MAX. | "E" MIN. | I.D. MIN. | O.D. MAX. | "A" DIM ±.015/0.38 | "C" REF |
|--------------|----------|--------------|----------|--------------|-------------------|----------|----------|-----------|-----------|-----------------------|-------------|
| MATERIAL NO. | ENG. NO. | MATERIAL NO. | ENG. NO. | | | | | | | | |
| 191600012 | NC-2214 | 191600070 | NC-2214T | .62/15.7(G) | .33/8.4(G) | .19/4.8 | .24/6.1 | .09/2.3 | .32/8.1 | 1.543/39.19 | .28/7.1(G) |
| 191600009 | NC-2212 | 191600071 | NC-2212T | .76/19.3(G) | .35/8.9(G) | .23/5.8 | .27/6.9 | .10/2.5 | .36/9.1 | 1.631/41.43 | .39/9.9(G) |
| 191600002 | NC-1610 | 191600083 | NC-1610T | .90/22.8 | .39/9.9 | .28/7.1 | .38/9.6 | .15/3.8 | .45/11.4 | 1.750/44.45 | .51/13.0 |
| 191600024 | NC-8 | 191600028 | NC-8T | 1.10/27.9(G) | .50/12.7(G) | .36/9.1 | .48/12.2 | .21/5.3 | .57/14.5 | 1.864/47.35 | .60/15.2(G) |



NOTES:

- MATERIAL: SLEEVE: TIN-PLATED COPPER
INSULATION: 6/6 NYLON,
NATURAL TRANSLUCENT
- (G) PARTS ARE ROHS COMPLIANT.

SALES DRAWING

| | | | | | | | | | | | |
|---|-------------------------------|--|---------------------|----------------------|----------------------|---|--------------|--|--|--|--|
| CORRECT DIM ERRORS EC NO: WNA2008-0280 DRW: HETHRODAHL 2008/05/08 CHKD: JMACNEIL 2008/05/09 APPR: JMACNEIL 2008/05/12 | QUALITY SYMBOLS ▽=0 ▽=0 | GENERAL TOLERANCES (UNLESS SPECIFIED) | | DIMENSION STYLE | | SCALE | DESIGN UNITS | THIRD ANGLE PROJECTION | | | |
| | | | | IN/MM | | 5:1 | INCH | | | | |
| | | | | mm | INCH | DRAWN BY | DATE | TITLE | | | |
| | | | | 4 PLACES ± --- ± --- | 3 PLACES ± --- ± --- | H. BEITZE | 04/02/23 | CLOSED END CONNECTORS NYLON INSULATED | | | |
| | | 2 PLACES ± --- ± --- | 1 PLACE ± --- ± --- | R. DEROSS | 04/02/23 | | | | | | |
| | | ANGULAR ± ---° | | APPROVED BY | DATE | MOLEX INCORPORATED DOCUMENT NO. SD-19160-001 SHEET NO. 1 OF 1 | | | | | |
| | | DRAFT WHERE APPLICABLE MUST REMAIN WITHIN DIMENSIONS | | R. DEROSS | 04/02/23 | | | | | | |
| | | | | SEE CHART | | THIS DRAWING CONTAINS INFORMATION THAT IS PROPRIETARY TO MOLEX INCORPORATED AND SHOULD NOT BE USED WITHOUT WRITTEN PERMISSION | | | | | |