

PLEASE CHECK WWW.MOLEX.COM FOR LATEST PART INFORMATION

Part Number: [1120275013](#)
Status: **Active**
Description: DirectLink™ SW1000 Software Drivers for Siemens S5, S7, TI - Full tags - Parallel Dongle Protection

Documents:

[Drawing \(PDF\)](#) [RoHS Certificate of Compliance \(PDF\)](#)

General

Product Family	Software and Development Kits
Series	112027
Comments	SW1000 integrates a powerful Console for configuration, diagnostic with test tools, and data servers (OPC DA, SuiteLink/FastDDE, library DLL). Ethernet TCP/IP: . - Siemens - Industrial Ethernet . . Serial: . - Siemens - AS511, PPI/PPI+, TI-Dir
DLL/API Available	Yes
Engineering Console Functionality	Yes
Operating System	Client / Server, Master Windows 7, Windows Server 2003, Windows Server 2008, Windows Vista, Windows XP
Product Name	Direct-Link®
Protocol	EtherNet TCP/IP, Serial
Source Code	N/A
Specification Compliance	N/A

Material Info

Old Part Number DRL-SIE-SWF-P

Reference - Drawing Numbers

Sales Drawing DRL-SIE-SWF-*

EU RoHS
ELV and RoHS
Compliant
REACH SVHC
Not Reviewed
Halogen-Free
Status
Not Reviewed

China RoHS



Need more information on product environmental compliance?

Email productcompliance@molex.com
 For a multiple part number RoHS Certificate of Compliance, [click here](#)

Please visit the [Contact Us](#) section for any non-product compliance questions.

Search Parts in this Series
[112027Series](#)



Direct-Link™ communication drivers provide data acquisition between Windows based applications and industrial devices connected to Ethernet TCP/IP and Serial networks.

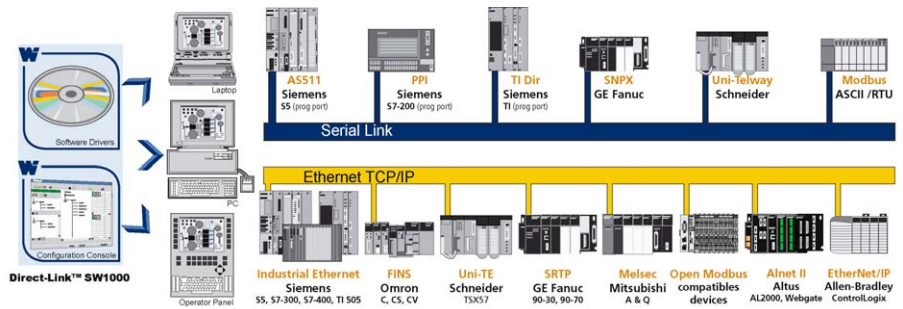
21 Jan. 10
DW200594

Direct-Link™ SW1000

Economical and Reliable Industrial Communications

Features

- **Well suited for embedded and light architecture (laptop, panel PC, MMI)**
- **Uses Standard PC resources**
 - ▶ Ethernet port
 - ▶ Serial port (COM1, COM2)
- **100% software solution**
- **Data Servers:**
 - ▶ OPC DA v3.0, 2.05 and 1.0a
 - ▶ Wonderware DAServer
 - ▶ Wonderware I/O (SuiteLink/FastDDE)
 - ▶ ActiveX Control
 - ▶ Library DLL
- **Supports multi Ethernet TCP/IP protocols simultaneously**
- **Protection**
 - ▶ Software key
 - ▶ Dongle (Parallel or USB)
- **Database (32Kbits, 32 Kwords) for Server mode to exchange data with applications**



Overview

Direct-Link™ SW1000 is a complete software package designed to connect your computer to Industrial Ethernet TCP/IP and Serial networks.

Direct-Link™ SW1000 is well adapted for embedded environments and it is used by operator interface manufacturers and OEM equipment manufacturers needing to make their computerized systems communicate.

Direct-Link™ SW1000 is ideally suited for small and medium-sized applications with low time constraints. It easily adapts to the light architectures of laptops, operator interfaces and workstations. Widely adopted in Industry, Direct-Link™ solutions are used for technical management in the building sector, electrical installations, tests and measurement.

To collect data, SW1000 uses existing computer resources (Ethernet port, COM ports) to connect a broad range of control and sensor devices from Allen-Bradley, Siemens, Schneider, and many others.

Economical and easy-to-use, the SW1000 package is designed for Windows PC-Based applications (HMI, SCADA, MES, RDBM, custom developments, etc), which require reliable data exchange with plant floor.

Available in Windows 2003 server, XP, 2000 and NT 4.0 environments, Direct-Link™ SW1000 integrates a powerful Console for configuration, diagnostic and test tools and data servers (OPC DA, DAServer, SuiteLink/FastDDE, ActiveX control, library DLL), that provide information for client applications.

Compatible with



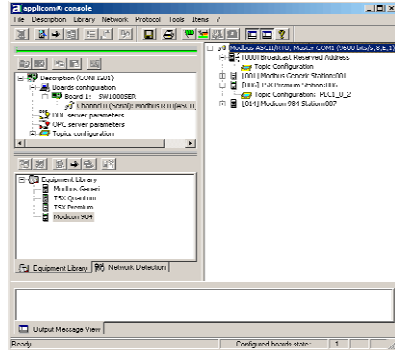
BradCommunications™

Direct-Link™ SW1000

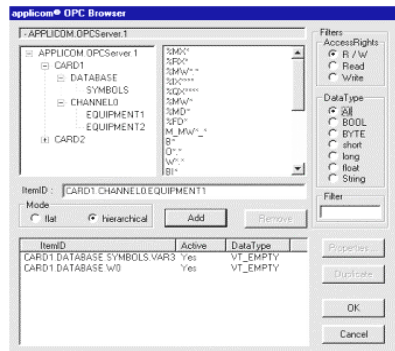


Software tools

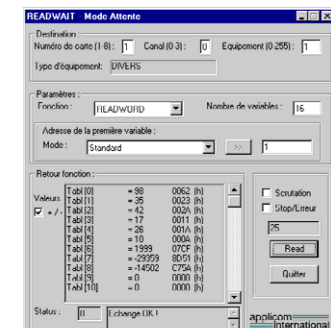
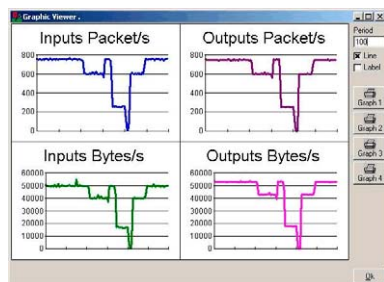
Direct-Link™ products lie in effective software tools enabling fast integration of industrial communication into your applications.



- Configuration Software -



- OPC Browser -



- Network Diagnostics & Test Tools -

Protocols (all included in the package)

Ethernet TCP/IP - All protocols can run simultaneously

- **New** Allen-Bradley - Logix5000 messaging for (ControlLogix and FlexLogix)
- Altus - Alnet II (AL2000 and WebGate Series)
- Alstom - SRTP (Alspa C80-35 and C80-75 Series)
- GE Fanuc - SRTP (90-30 and 90-70 Series)
- Mitsubishi - Melsec (A and Q Series)
- Omron - FINS (C, CV and CS Series)
- Schneider - Open Modbus TCP/UDP (Premium and Quantum Series)
- Schneider - Uni-TE (Micro and Premium)
- Siemens - Industrial Ethernet (S5, S7 and TI-505 Series)

C/S⁽¹⁾⁽²⁾

C/S
C/S
C/S
C/S
C/S
C/S
C/S

Serial

- Modbus ASCII & RTU
- GE Fanuc - SNPX (90-xx and 80-xx Series)
- Schneider - Uni-Telway (TSX 7 Series)
- Siemens - AS511 (Simatic S5 Series)
- Siemens - PPI/PPI+ (Simatic S7-200 Series)
- Siemens - Ti-Dir (Simatic TI-505 Series)

M/S
M
S, C/S
M
M
M

M: Master - S: Slave - M/S: Master/Slave - C/S: Client/Server - C: Client

(1): Library DLL and DAServer are not supported with the Logix5000 messaging.
(2): Server mode via PCCC messaging

Ordering Information

Part Number	SAP	Product description
DRL-ALL-SWL-P	1120270004 (P)	Direct-Link™ SW1000 software package. All protocols and data servers included.
DRL-ALL-SWL-S	1120270005 (S)	All protocols and data servers included.
DRL-ALL-SWL-U	1120270006 (U)	Ethernet TCP/IP 1000 tags + Serial Full tags .
DRL-ALL-SWF-P	1120270001 (P)	Direct-Link™ SW1000 software package. All protocols and data servers included.
DRL-ALL-SWF-S	1120270002 (S)	All protocols and data servers included.
DRL-ALL-SWF-U	1120270003 (U)	Ethernet TCP/IP Full tags + Serial Full tags .
DRL-SIE-SWF-P	1120270013 (P)	Direct-Link™ SW1000 software package. Siemens protocols (S5, S7, TI) and data servers included.
DRL-SIE-SWF-S	1120270014 (S)	Siemens protocols (S5, S7, TI) and data servers included.
DRL-SIE-SWF-U	1120270015 (U)	Ethernet TCP/IP Full tags + Serial Full tags .
DRL-UPG-SWF	1120270010	Direct-Link™ SW1000 upgrade from 1000 tags to Full tags

(*): to order, replace X with the corresponding letter below.

Replace X	Type of protection
P	Dongle for parallel port (small format)
S	Software Key
U	Dongle for USB port (not supported on NT 4)

The performance of SW1000 depends on the operating system and the characteristics of your PC (processor, memory, etc). If in the future, your application requires increased performance, it is very easy to migrate SW1000 to **applicom**® solutions based on intelligent network interface cards (on-board processor managing industrial protocols, multi communication channels up to 32, embedded electrical interfaces RS232/RS422/RS485/Current loop).

Other related products: IP67/IP20 Ethernet switches, Intelligent Ethernet card and gateways, Ethernet I/O for control/command.

To contact us: www.woodhead.com

North America: US: +1 800 225 7724 – Canada: +1 519 725 5136
Europe: France: +33 2 32 96 04 20 – Germany: +49 7252 94 96 0 – Italy: +39 010 59 30 77 – United Kingdom: +44 1495 356300

Asia: Shanghai, China: +86 21-5835-9885 – Tianjin, China: +86 22-23321717
Singapore: +65 6268-6868 – Yamato, Japan: +81 46-265-2428 – Nagoya, Japan: +81 52-221-5950

Brad is a registered trademark and BradCommunications and applicom are trademarks of Molex Incorporated. © 2008 Molex