

PLEASE CHECK WWW.MOLEX.COM FOR LATEST PART INFORMATION

Part Number: **0480372100**
Status: **Active**
Description: Universal Serial Bus (USB) Shielded I/O Plug, Type A, Right Angle, Surface Mount, Straight Tab 4.80mm (.189"), 0.76µm (30µ") Gold (Au) Plating, PCB Thickness 1.60mm (.063"), Tape on Reel Package, Lead Free

Documents:

[3D Model](#) [Product Specification PS-48037-001 \(PDF\)](#)
[Drawing \(PDF\)](#) [RoHS Certificate of Compliance \(PDF\)](#)

General

| | |
|----------------|-----------------------------|
| Product Family | I/O Connectors |
| Series | 48037 |
| Application | Wire-to-Board |
| Comments | Straight Tab 4.80mm (.189") |
| Component Type | Plug |
| Product Name | USB |
| Type | A |

Physical

| | |
|--------------------------------|-----------------------|
| Boot Color | N/A |
| Circuits (Loaded) | 4 |
| Circuits (maximum) | 4 |
| Gender | Plug |
| Keying to Mating Part | Yes |
| Lock to Mating Part | Yes |
| Material - Plating Mating | Gold |
| Material - Plating Termination | Tin |
| Number of Rows | 1 |
| Orientation | Right Angle |
| PCB Locator | Yes |
| PCB Retention | Yes |
| PCB Thickness Recommended (in) | 0.063 In |
| PCB Thickness Recommended (mm) | 1.60 mm |
| Packaging Type | Embossed Tape on Reel |
| Panel Mount | Yes |
| Pitch - Mating Interface (in) | 0.078 In, 0.098 In |
| Pitch - Mating Interface (mm) | 2.00 mm, 2.50 mm |
| Pitch - Term. Interface (in) | 0.078 In, 0.098 In |
| Pitch - Term. Interface (mm) | 2.00 mm, 2.50 mm |
| Plating min: Mating (µin) | 30 |
| Plating min: Mating (µm) | 0.76 |
| Polarized to Mating Part | Yes |
| Polarized to PCB | Yes |
| Ports | 1 |
| Surface Mount Compatible (SMC) | Yes |
| Temperature Range - Operating | -20°C to +85°C |
| Termination Interface: Style | Surface Mount |
| Waterproof / Dustproof | No |

Electrical

| | |
|-------------------|---------------|
| Current - Maximum | 1.5A |
| Shield Type | Full Shield |
| Shielded | Yes |
| Voltage - Maximum | 150V AC (RMS) |

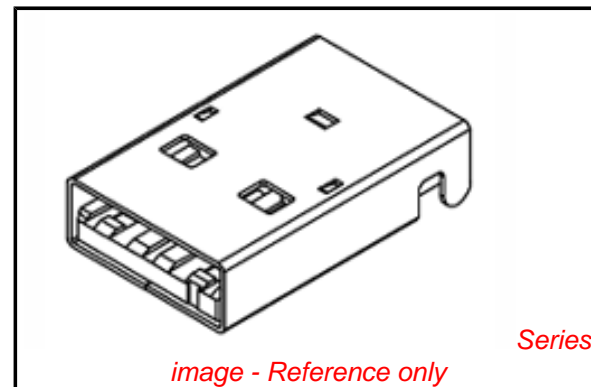


image - Reference only

EU RoHS

**ELV and RoHS
Compliant**
REACH SVHC
 Not Reviewed
**Halogen-Free
Status**

China RoHS



Not Reviewed
**Need more information on product
environmental compliance?**

Email productcompliance@molex.com
 For a multiple part number RoHS Certificate of Compliance, [click here](#)

Please visit the [Contact Us](#) section for any non-product compliance questions.

Search Parts in this Series

48037Series

Mates With

USB Type A Receptacle

Material Info

Reference - Drawing Numbers

Product Specification

PS-48037-001

Sales Drawing

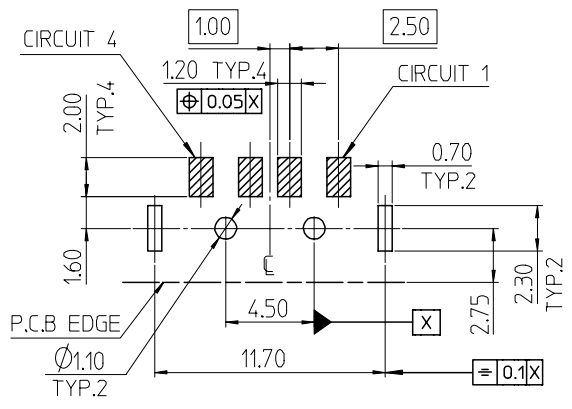
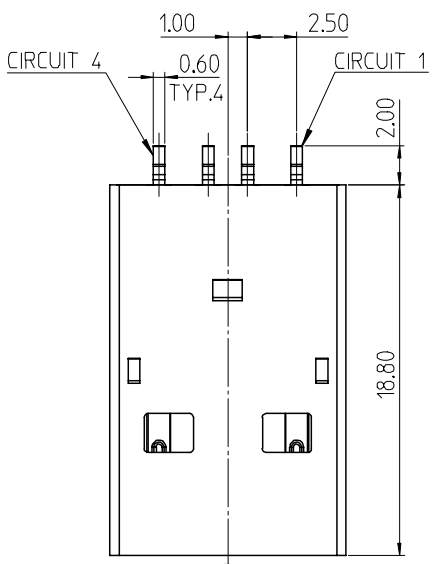
SD-48037-003

This document was generated on 02/02/2010

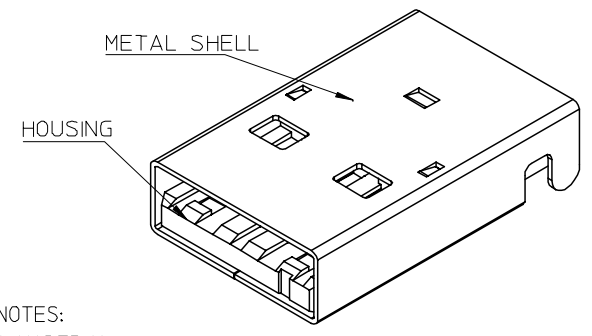
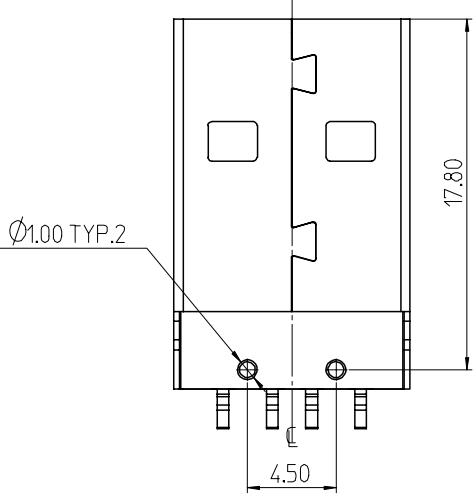
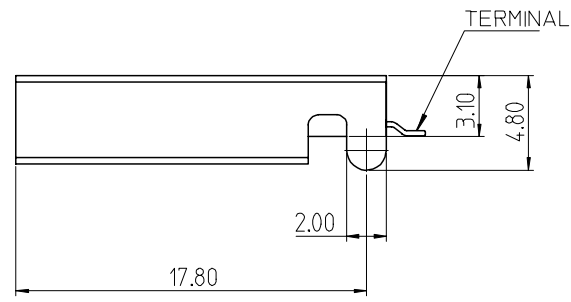
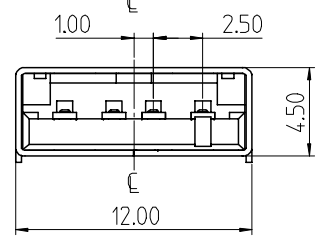
PLEASE CHECK WWW.MOLEX.COM FOR LATEST PART INFORMATION

10 9 8 7 6 5 4 3 2 1

F
E
D
C
B
A



RECOMMENDED P.C.B LAYOUT
GENERAL TOLERANCE: ± 0.05



- NOTES:
- MATERIAL:
HOUSING: NYLON 6T, GLASS FIBER FILLED, UL94V-0, COLOR: BLACK.
TERMINAL: BRASS
METAL SHELL: COLD ROLL STEEL
 - FINISH:
TERMINAL:
SELECTIVE GOLD(Au) IN CONTACT AREA
THICKNESS=30 MICRONCH MINIMUM.
SELECTIVE TIN(Sn) ALLOY IN SOLDER TAIL AREA
THICKNESS=120 MICRONCH MINIMUM.
NICKEL(Ni) OVERALL
METAL SHELL:
NICKEL(Ni) OVERALL
UNDER PLATED: COPPER(Cu), OVERALL
THICKNESS=50 MICRONCH MINIMUM.
 - RECOMMENDED PCB THICKNESS: 1.6mm ± 0.05
 - PRODUCT SPECIFICATION REFERS TO PS-48037-001
 - PACKAGE SPECIFICATION REFERS TO PK-48037-210
 - TEST SUMMARY REFERS TO TS-48037-001
 - COPLANARITY TO BE 0.1mm MAX.
 - LEAD FREE AND RoHS COMPLIANCE.
 - DATE CODE:
X X X X X
YEAR WEEK DAY

| <p>NEW RELEASE EC NO: SH2006-0042 DRWN: ALLIN 2005/10/26 CHKD: 2005/10/26 APPR: WMSCHANG 2005/11/04</p> | QUALITY SYMBOLS | GENERAL TOLERANCES (UNLESS SPECIFIED) | DIMENSION STYLE MM ONLY | SCALE 3:1 | DESIGN UNITS METRIC | THIRD ANGLE PROJECTION | | | | | | | | | | | | | | | | | | | | | | | | | | | | |
|---|--|---|------------------------------|---|------------------------|------------------------|-------|-------|----------|-------|-------|----------|--------|-------|---------|--------|-------|--|----------|------|-------|--------|------------|--|------------|------------|-------------|------|--------------------|--------------|------------|--|--|--|
| | ▽=0 ∇=0 | <table border="1"> <thead> <tr> <th></th> <th>mm</th> <th>INCH</th> </tr> </thead> <tbody> <tr> <td>4 PLACES</td> <td>± ---</td> <td>± ---</td> </tr> <tr> <td>3 PLACES</td> <td>± ---</td> <td>± ---</td> </tr> <tr> <td>2 PLACES</td> <td>± 0.25</td> <td>± ---</td> </tr> <tr> <td>1 PLACE</td> <td>± 0.25</td> <td>± ---</td> </tr> </tbody> </table> | | mm | INCH | 4 PLACES | ± --- | ± --- | 3 PLACES | ± --- | ± --- | 2 PLACES | ± 0.25 | ± --- | 1 PLACE | ± 0.25 | ± --- | <table border="1"> <thead> <tr> <th>DRAWN BY</th> <th>DATE</th> <th>TITLE</th> </tr> </thead> <tbody> <tr> <td>CHERRY</td> <td>2005/05/25</td> <td rowspan="2">USB A TYPE PLUG WITH STR SHELL LEG(4.8MM)SMT (LEAD-FREE VERSION)</td> </tr> <tr> <td>ROGER TSAI</td> <td>2005/05/26</td> </tr> <tr> <td>APPROVED BY</td> <td>DATE</td> <td rowspan="2">MOLEX INCORPORATED</td> </tr> <tr> <td>WILSON CHANG</td> <td>2005/05/26</td> </tr> </tbody> </table> | DRAWN BY | DATE | TITLE | CHERRY | 2005/05/25 | USB A TYPE PLUG WITH STR SHELL LEG(4.8MM)SMT (LEAD-FREE VERSION) | ROGER TSAI | 2005/05/26 | APPROVED BY | DATE | MOLEX INCORPORATED | WILSON CHANG | 2005/05/26 | | | |
| | | mm | INCH | | | | | | | | | | | | | | | | | | | | | | | | | | | | | | | |
| | 4 PLACES | ± --- | ± --- | | | | | | | | | | | | | | | | | | | | | | | | | | | | | | | |
| 3 PLACES | ± --- | ± --- | | | | | | | | | | | | | | | | | | | | | | | | | | | | | | | | |
| 2 PLACES | ± 0.25 | ± --- | | | | | | | | | | | | | | | | | | | | | | | | | | | | | | | | |
| 1 PLACE | ± 0.25 | ± --- | | | | | | | | | | | | | | | | | | | | | | | | | | | | | | | | |
| DRAWN BY | DATE | TITLE | | | | | | | | | | | | | | | | | | | | | | | | | | | | | | | | |
| CHERRY | 2005/05/25 | USB A TYPE PLUG WITH STR SHELL LEG(4.8MM)SMT (LEAD-FREE VERSION) | | | | | | | | | | | | | | | | | | | | | | | | | | | | | | | | |
| ROGER TSAI | 2005/05/26 | | | | | | | | | | | | | | | | | | | | | | | | | | | | | | | | | |
| APPROVED BY | DATE | MOLEX INCORPORATED | | | | | | | | | | | | | | | | | | | | | | | | | | | | | | | | |
| WILSON CHANG | 2005/05/26 | | | | | | | | | | | | | | | | | | | | | | | | | | | | | | | | | |
| | DRAFT WHERE APPLICABLE MUST REMAIN WITHIN DIMENSIONS | MATERIAL NO. 48037-2100 | DOCUMENT NO. SD-48037-003 | SHEET NO. 1 OF 1 | | | | | | | | | | | | | | | | | | | | | | | | | | | | | | |
| A | REV | | SIZE A3 | THIS DRAWING CONTAINS INFORMATION THAT IS PROPRIETARY TO MOLEX INCORPORATED AND SHOULD NOT BE USED WITHOUT WRITTEN PERMISSION | | | | | | | | | | | | | | | | | | | | | | | | | | | | | | |

9 8 7 6 5 4 3 2 1