

PLEASE CHECK WWW.MOLEX.COM FOR LATEST PART INFORMATION

Part Number: [0022433150](#)
Status: **Active**
Description: 2.5 SPOX IDT RECEPTACLE WHITE 15CKT

Documents:

[3D Model](#) [Product Specification PS-42219-0001 \(PDF\)](#)
[Drawing \(PDF\)](#) [RoHS Certificate of Compliance \(PDF\)](#)

General

Product Family IDT and Solder Connectors
 Series [42219](#)
 Comments Spring Box|Use with 24 AWG solid
 Crimp Quality Equipment Yes
 Product Name SPOX™

Physical

Circuits (Loaded) 15
 Color - Resin Natural
 Durability (mating cycles max) 25
 Gender Female
 Glow-Wire Compliant No
 Lock to Mating Part None
 Material - Metal Phosphor Bronze
 Material - Plating Mating Tin
 Material - Plating Termination Tin
 Material - Resin Polyester
 Number of Rows 1
 Packaging Type Bag
 Panel Mount No
 Pitch - Mating Interface (in) 0.098 In
 Pitch - Mating Interface (mm) 2.50 mm
 Plating min: Mating (µin) 100
 Plating min: Mating (µm) 2.50
 Plating min: Termination (µin) 100
 Plating min: Termination (µm) 2.50
 Stackable No
 Temperature Range - Operating 0°C to +75°C
 Termination Interface: Style IDT or Pierce
 Wire Size AWG 24, 26

Electrical

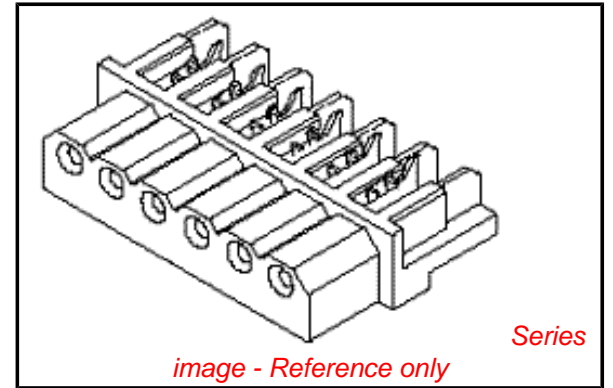
Current - Maximum per Contact 3A
 Voltage - Maximum 250V

Material Info

Old Part Number A-42219-15A

Reference - Drawing Numbers

Product Specification PS-42219-0001
 Sales Drawing SDA-42219-*



EU RoHS

**ELV and RoHS
 Compliant**
**REACH SVHC
 Contains SVHC: No**
**Halogen-Free
 Status**

China RoHS



Not Reviewed

**Need more information on product
 environmental compliance?**

Email productcompliance@molex.com
 For a multiple part number RoHS Certificate of
 Compliance, [click here](#)

Please visit the [Contact Us](#) section for any
 non-product compliance questions.

Search Parts in this Series

[42219Series](#)

Mates With

Headers, [5267](#) , [42249](#) , [42267](#) , [5268](#)

Application Tooling | FAQ

*Tooling specifications and manuals are
 found by selecting the products below.
 Crimp Height Specifications are then
 contained in the Application Tooling
 Specification document.*

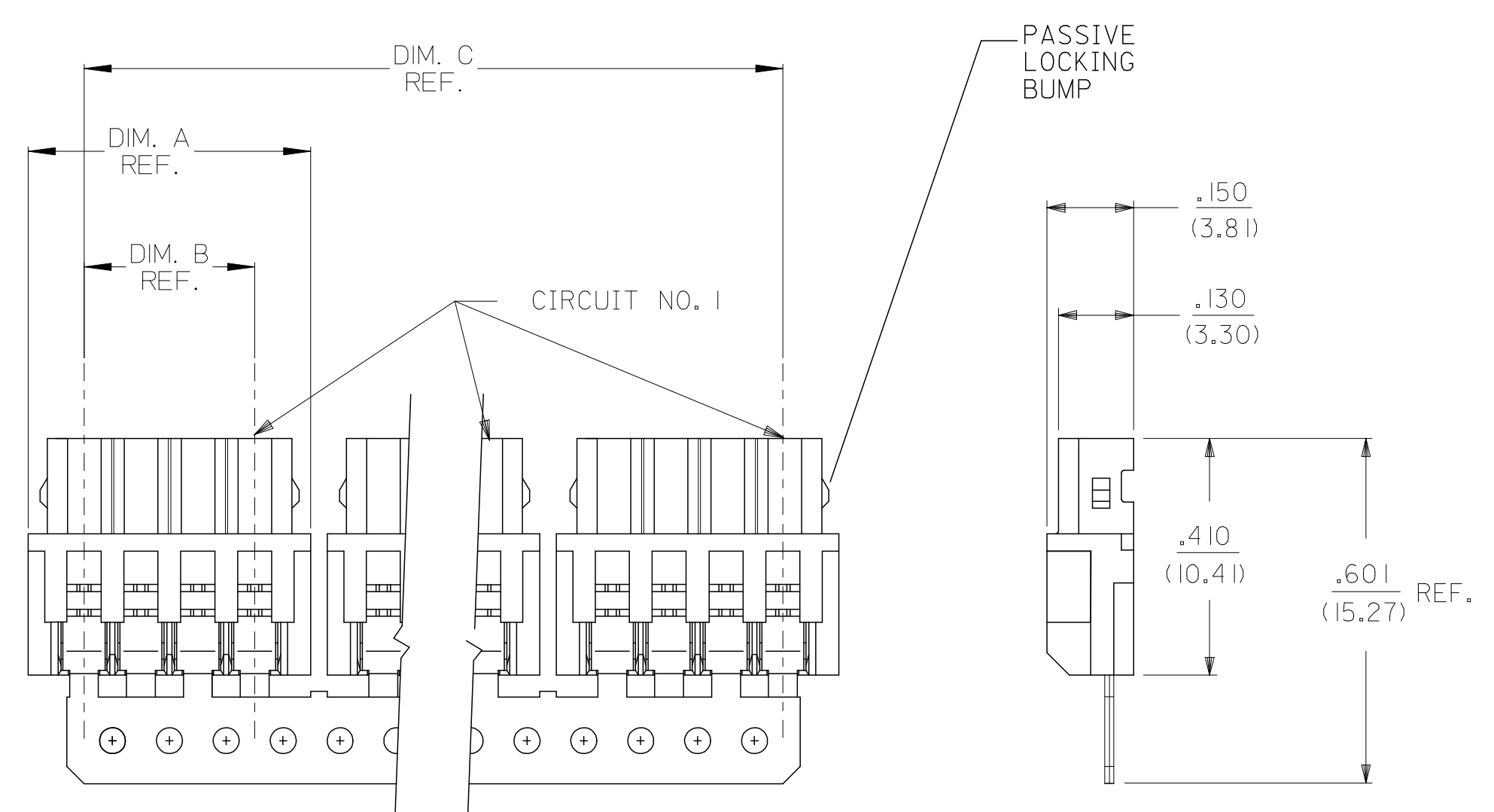
Global

| Description | Product # |
|---|----------------------------|
| IDT - Manual Press | 0011219757 |
| Hawk™ Discrete Wire Terminator Machine 2.5mm | 0623000500 |
| Hawk™ Discrete Wire Terminator Machine 2.5mm Changehead for Parallel Action Handtool | 0623000700 |
| | 0690080290 |

This document was generated on 06/08/2010

PLEASE CHECK WWW.MOLEX.COM FOR LATEST PART INFORMATION

| | 13 | 12 | 11 | 10 | 9 | 8 | 7 | 6 | 5 | 4 | 3 | 2 | 1 |
|---|-------------------------------|----------------------------|------------------|------------------|------------------|-----------------------------|---|---|---|---|---|---|---|
| J | DISCRETE CONN. CKT SIZE | NO OF CONN. IN CHAIN | DIM. A | DIM. B | DIM. C | PASSIVE LOCKING BUMPS | | | | | | | |
| | 2 | 10 | .292 (7.42) | .098 (2.50) | 2.756 (70.00) | YES | | | | | | | |
| | 3 | 8 | .390 (9.92) | .197 (5.00) | 2.953 (75.00) | YES | | | | | | | |
| I | 4 | 6 | .489 (12.42) | .295 (7.50) | 2.756 (70.00) | YES | | | | | | | |
| | 5 | 5 | .587 (14.92) | .394 (10.00) | 2.756 (70.00) | YES | | | | | | | |
| | 6 | 4 | .685 (17.40) | .492 (12.50) | 2.556 (65.00) | YES | | | | | | | |
| H | 7 | 4 | .783 (19.90) | .591 (15.00) | 2.952 (75.00) | YES | | | | | | | |
| | 8 | 3 | .882 (22.40) | .689 (17.50) | 2.461 (62.50) | YES | | | | | | | |
| | 9 | 3 | .980 (24.90) | .787 (20.00) | 2.756 (70.00) | NO | | | | | | | |
| G | 10 | 2 | 1.079 (27.40) | .886 (22.50) | 1.969 (50.00) | NO | | | | | | | |
| | 11 | 2 | 1.177 (29.90) | .984 (25.00) | 2.165 (55.00) | NO | | | | | | | |
| | 12 | 2 | 1.276 (32.40) | 1.082 (27.50) | 2.362 (60.00) | NO | | | | | | | |
| F | 13 | 2 | 1.374 (34.90) | 1.181 (30.00) | 2.559 (65.00) | NO | | | | | | | |
| | 14 | 2 | 1.472 (37.40) | 1.279 (32.50) | 2.756 (70.00) | NO | | | | | | | |
| | 15 | 2 | 1.571 (39.90) | 1.378 (35.00) | 2.952 (75.00) | NO | | | | | | | |



NOTES:

- MATERIAL:
HOUSING: POLYESTER, 7.5% GLASS FILLED, 94V-0
TERMINAL: PHOS. BRONZE
- FINISH:
(P909) *OVERALL HOT TIN DIP: .000100/0.00254 MIN.
*THE PRIMARY SHIPPING CARTON WILL BE LABELED "COMPLIANT TO RoHS DIRECTIVE 2002/95/EC AND ELV ANNEX II OF DIRECTIVE 2000/53/EC". CARTONS WITHOUT THIS LABEL MAY CONTAIN PRODUCT WITH TIN/LEAD PLATINGS.
- FOR PRODUCT SPEC'S SEE PS-42219-0001
- PACKAGING SPECIFICATION: SEE LENGEND
- THE WIRE TERMINATION SPEC IS SMES-42219-0002.
- THIS PART CONFORMS TO CLASS B REQUIREMENTS OF COSMETIC SPECIFICATION PS-45499-002.

42219-N***-*

NO OF CKTS ———

HOUSING COLOR ———

PACKAGING SPEC.
BLANK= PK-70873-0140 (LARGE BOX)
I= PK-40873-0061 (SMALL BOX)

TERMINAL
BLANK=42218

A= (NATURAL)
B= (BLUE)
C= (BROWN)
D= (RED)
E= (ORANGE)
F= (YELLOW)
G= (GREEN)
H= (GRAY)

| | |
|------|------|
| 3 | J1 |
| 2 | J1 |
| 1 | J1 |
| SHT. | REV. |

| | | | | | | |
|--|-----------------------------------|---|--|--|--------------|------------------------|
| UPDATE NOTES EC NO: UCP2007-1815 DRWN:PRIDDER 2007/01/26 CHK'D:ADERR 2007/01/30 APPR:FSMITH 2007/02/01 | QUALITY SYMBOLS | GENERAL TOLERANCES (UNLESS SPECIFIED) | DIMENSION STYLE | SCALE | DESIGN UNITS | THIRD ANGLE PROJECTION |
| | $\nabla=0$ $\sphericalangle=0$ | mm INCH 4 PLACES ± --- ± --- 3 PLACES ± --- ± .010 2 PLACES ± 0.25 ± .014 1 PLACE ± 0.36 ± --- ANGULAR ± 1/2° | IN/MM | 4:1 | METRIC | |
| | | DRAFT WHERE APPLICABLE MUST REMAIN WITHIN DIMENSIONS | DRAWN BY: AG DATE: 1989/02/06 CHECKED BY: RE DATE: 1989/02/06 APPROVED BY: WRL DATE: 1989/02/06 | TITLE: 2.5MM I.D.T. CONNECTOR ASSEMBLY | | |
| | | | MATERIAL NO. SEE CHART MOLEX INCORPORATED DOCUMENT NO. SDA-42219-* SHEET NO. 1 OF 3 | | | |

| 13 | | 12 | | 11 | | 10 | | 9 | | 8 | | 7 | | 6 | | 5 | | 4 | | 3 | | 2 | | 1 | |
|-------------|--------------|----------|----------------|---------------|--------------|----------|--------------|-------------|--------------|------------|--------------|-------------|--|----------|--|-------------|--|----------|--|-------------|--|----------|--|---|--|
| A-422 19-NA | | | | A-422 19-NA-R | | | | A-422 19-NB | | | | A-422 19-NC | | | | A-422 19-ND | | | | A-422 19-NE | | | | | |
| PART NO. | | ENG. NO. | | PART NO. | | ENG. NO. | | PART NO. | | ENG. NO. | | PART NO. | | ENG. NO. | | PART NO. | | ENG. NO. | | PART NO. | | ENG. NO. | | | |
| 22-43-3020 | A-422 19-2A | | A-422 19-2A-R | 22-44-6026 | A-422 19-2B | | A-422 19-2C | 22-44-6022 | A-422 19-2D | 22-44-6024 | A-422 19-2E | | | | | | | | | | | | | | |
| 22-43-3030 | A-422 19-3A | | A-422 19-3A-R | 22-44-6036 | A-422 19-3B | | A-422 19-3C | 22-44-6032 | A-422 19-3D | 22-44-6034 | A-422 19-3E | | | | | | | | | | | | | | |
| 22-43-3040 | A-422 19-4A | | A-422 19-4A-R | 22-44-6046 | A-422 19-4B | | A-422 19-4C | 22-44-6042 | A-422 19-4D | 22-44-6044 | A-422 19-4E | | | | | | | | | | | | | | |
| 22-43-3050 | A-422 19-5A | | A-422 19-5A-R | 22-44-6056 | A-422 19-5B | | A-422 19-5C | 22-44-6052 | A-422 19-5D | 22-44-6054 | A-422 19-5E | | | | | | | | | | | | | | |
| 22-43-3060 | A-422 19-6A | | A-422 19-6A-R | | A-422 19-6B | | A-422 19-6C | 22-44-6062 | A-422 19-6D | 22-44-6064 | A-422 19-6E | | | | | | | | | | | | | | |
| 22-43-3070 | A-422 19-7A | | A-422 19-7A-R | | A-422 19-7B | | A-422 19-7C | 22-44-6072 | A-422 19-7D | 22-44-6074 | A-422 19-7E | | | | | | | | | | | | | | |
| 22-43-3080 | A-422 19-8A | | A-422 19-8A-R | | A-422 19-8B | | A-422 19-8C | 22-44-6082 | A-422 19-8D | 22-44-6084 | A-422 19-8E | | | | | | | | | | | | | | |
| 22-43-3090 | A-422 19-9A | | A-422 19-9A-R | | A-422 19-9B | | A-422 19-9C | 22-44-6092 | A-422 19-9D | 22-44-6094 | A-422 19-9E | | | | | | | | | | | | | | |
| 22-43-3100 | A-422 19-10A | | A-422 19-10A-R | | A-422 19-10B | | A-422 19-10C | 22-44-6102 | A-422 19-10D | 22-44-6104 | A-422 19-10E | | | | | | | | | | | | | | |
| 22-43-3110 | A-422 19-11A | | A-422 19-11A-R | | A-422 19-11B | | A-422 19-11C | | A-422 19-11D | | A-422 19-11E | | | | | | | | | | | | | | |
| 22-43-3120 | A-422 19-12A | | A-422 19-12A-R | | A-422 19-12B | | A-422 19-12C | 22-44-6122 | A-422 19-12D | | A-422 19-12E | | | | | | | | | | | | | | |
| 22-43-3130 | A-422 19-13A | | A-422 19-13A-R | | A-422 19-13B | | A-422 19-13C | | A-422 19-13D | | A-422 19-13E | | | | | | | | | | | | | | |
| 22-43-3140 | A-422 19-14A | | A-422 19-14A-R | | A-422 19-14B | | A-422 19-14C | 22-44-6142 | A-422 19-14D | | A-422 19-14E | | | | | | | | | | | | | | |
| 22-43-3150 | A-422 19-15A | | A-422 19-15A-R | | A-422 19-15B | | A-422 19-15C | | A-422 19-15D | | A-422 19-15E | | | | | | | | | | | | | | |

| A-422 19-NF | | A-422 19-NG | | | | A-422 19-NA-I | | A-422 19-NH | | | |
|-------------|--------------|-------------|--------------|----------|--|---------------|----------------|-------------|--------------|----------|--|
| PART NO. | | ENG. NO. | | PART NO. | | ENG. NO. | | PART NO. | | ENG. NO. | |
| 22-44-6021 | A-422 19-2F | 22-44-6023 | A-422 19-2G | | | 22-43-3022 | A-422 19-2A-I | | A-422 19-2H | | |
| 22-44-6031 | A-422 19-3F | 22-44-6033 | A-422 19-3G | | | 22-43-3032 | A-422 19-3A-I | | A-422 19-3H | | |
| 22-44-6041 | A-422 19-4F | 22-44-6043 | A-422 19-4G | | | 22-43-3042 | A-422 19-4A-I | | A-422 19-4H | | |
| 22-44-6051 | A-422 19-5F | 22-44-6053 | A-422 19-5G | | | 22-43-3052 | A-422 19-5A-I | | A-422 19-5H | | |
| 22-44-6061 | A-422 19-6F | 22-44-6063 | A-422 19-6G | | | 22-43-3062 | A-422 19-6A-I | | A-422 19-6H | | |
| 22-44-6071 | A-422 19-7F | 22-44-6073 | A-422 19-7G | | | 22-43-3072 | A-422 19-7A-I | | A-422 19-7H | | |
| | A-422 19-8F | 22-44-6083 | A-422 19-8G | | | 22-43-3082 | A-422 19-8A-I | | A-422 19-8H | | |
| 22-44-6091 | A-422 19-9F | 22-44-6093 | A-422 19-9G | | | 22-43-3092 | A-422 19-9A-I | | A-422 19-9H | | |
| 22-44-6101 | A-422 19-10F | 22-44-6103 | A-422 19-10G | | | 22-43-3102 | A-422 19-10A-I | | A-422 19-10H | | |
| | A-422 19-11F | 22-44-6113 | A-422 19-11G | | | 22-43-3112 | A-422 19-11A-I | | A-422 19-11H | | |
| | A-422 19-12F | 22-44-6123 | A-422 19-12G | | | 22-43-3122 | A-422 19-12A-I | | A-422 19-12H | | |
| | A-422 19-13F | 22-44-6133 | A-422 19-13G | | | 22-43-3132 | A-422 19-13A-I | | A-422 19-13H | | |
| | A-422 19-14F | 22-44-6143 | A-422 19-14G | | | 22-43-3142 | A-422 19-14A-I | | A-422 19-14H | | |
| | A-422 19-15F | 22-44-6153 | A-422 19-15G | | | 22-43-3152 | A-422 19-15A-I | | A-422 19-15H | | |

| ADD 22-44-6122/6142 EC NO: UCP2007-1815 DRWN: PRIDDER 2007/01/26 CHKD: ADERR 2007/01/30 APPR: FSMITH 2007/02/01 | QUALITY SYMBOLS | GENERAL TOLERANCES (UNLESS SPECIFIED) <table border="1"> <tr><th colspan="2">mm</th><th colspan="2">INCH</th></tr> <tr><td>4 PLACES</td><td>± .005</td><td>± .005</td><td></td></tr> <tr><td>3 PLACES</td><td>± .005</td><td>± .005</td><td></td></tr> <tr><td>2 PLACES</td><td>± .005</td><td>± .005</td><td></td></tr> <tr><td>1 PLACE</td><td>± .005</td><td>± .005</td><td></td></tr> </table> | mm | | INCH | | 4 PLACES | ± .005 | ± .005 | | 3 PLACES | ± .005 | ± .005 | | 2 PLACES | ± .005 | ± .005 | | 1 PLACE | ± .005 | ± .005 | | DIMENSION STYLE IN/MM DRAWN BY: SCHMIDGALL DATE: 1991/05/17 CHECKED BY: EDGLEY DATE: 1991/05/17 APPROVED BY: LENZ DATE: 1991/05/17 | SCALE: --- DESIGN UNITS: METRIC THIRD ANGLE PROJECTION | TITLE: 2.5 MM I.D. CONNECTOR ADDEMBLY MOLEX INCORPORATED | MATERIAL NO.: SEE CHART DOCUMENT NO.: SDA-42219-* SHEET NO.: 2 OF 3 |
|---|---------------------|---|--------|--|------|--|----------|--------|--------|--|----------|--------|--------|--|----------|--------|--------|--|---------|--------|--------|--|---|--|---|---|
| | mm | | INCH | | | | | | | | | | | | | | | | | | | | | | | |
| | 4 PLACES | ± .005 | ± .005 | | | | | | | | | | | | | | | | | | | | | | | |
| | 3 PLACES | ± .005 | ± .005 | | | | | | | | | | | | | | | | | | | | | | | |
| 2 PLACES | ± .005 | ± .005 | | | | | | | | | | | | | | | | | | | | | | | | |
| 1 PLACE | ± .005 | ± .005 | | | | | | | | | | | | | | | | | | | | | | | | |
| DRAFT WHERE APPLICABLE MUST REMAIN WITHIN DIMENSIONS | | THIS DRAWING CONTAINS INFORMATION THAT IS PROPRIETARY TO MOLEX INCORPORATED AND SHOULD NOT BE USED WITHOUT WRITTEN PERMISSION | | | | | | | | | | | | | | | | | | | | | | | | |
| REV: J1 | | ANGULAR ±1/2° | | | | | | | | | | | | | | | | | | | | | | | | |
| | | | | | | | | | | | | | | | | | | | | | | | | | | |