

PLEASE CHECK WWW.MOLEX.COM FOR LATEST PART INFORMATION

Part Number: [0359030075](#)
Status: **Active**
Overview: [bulb sockets](#)
Description: Silicone Rubber Wire Rear-Seal for Automotive Horn Connector, Use with 35215 Housing

Documents:

[Drawing \(PDF\)](#) [Product Specification PS-35028-003 \(PDF\)](#)
[Product Specification PS-35028-002 \(PDF\)](#) [RoHS Certificate of Compliance \(PDF\)](#)

General

Product Family	Accessories
Series	35903
Component Type	Wire Seal
Overview	bulb sockets
Product Name	Bulb Socket

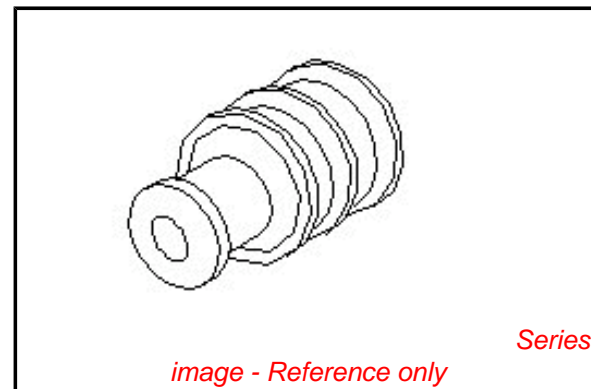
Physical

Breakaway	No
Circuits (Loaded)	N/A
Lock to Mating Part	No
Number of Rows	0
Packaging Type	Bag
Temperature Range - Operating	-40°C to +120°C

Material Info

Reference - Drawing Numbers

Product Specification	PS-35028-002, PS-35028-003
Sales Drawing	SD-35903-0075



EU RoHS

ELV and RoHS Compliant
REACH SVHC
 Not Reviewed
Halogen-Free Status

China RoHS



Need more information on product environmental compliance?

Email productcompliance@molex.com
 For a multiple part number RoHS Certificate of Compliance, [click here](#)

Please visit the [Contact Us](#) section for any non-product compliance questions.

Search Parts in this Series

[35903Series](#)

Use With

[35407](#) Female Terminal . [35825](#) Automotive Horn Female Housing

DWG. NO. SD35903-0075

SIMILAR ITEM

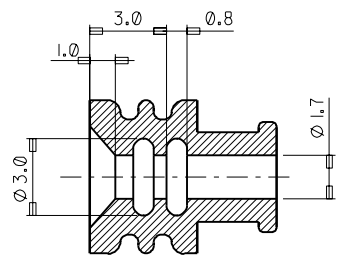
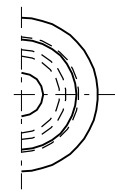
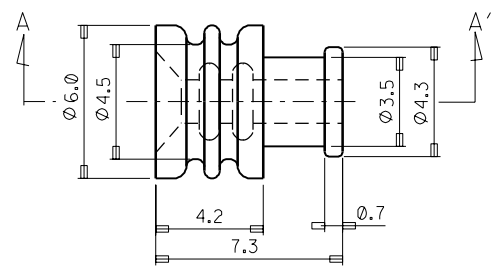
PROJECT NO.

5

4

3

2



SECTION A-A'

- NOTES
- 1.MATERIAL : SILICON RUBBER
 - 2.COLOR : BLUE
 - 3.WIRE SIZE : AVS 0.550.,AVSS0.8550.

EC NO. DRWN: H.J.KIM 96.05.06 CH'K: B.K.CHOI APPR: C.W.LEE	DESCRIPTION MAJOR CRITICAL	QUALITY SYMBOLS		GENERAL TOLERANCES: (UNLESS SPECIFIED)		SCALE 4/1	DESIGN UNITS <input checked="" type="checkbox"/> mm <input type="checkbox"/> INCH	<input type="checkbox"/> THIRD ANGLE <input checked="" type="checkbox"/> PROJECTION	DIMENSIONS: <input type="checkbox"/> mm <input type="checkbox"/> INCH <input checked="" type="checkbox"/> mm ONLY		SHT REV	
		4 PLACES $\pm 0.$ $\pm.$		3 PLACES $\pm 0.$ $\pm.$		DRAWN BY & DATE C.Y.CHO 91.12.26		TITLE: WIRE SEAL FOR HORN CONN.				
		2 PLACES $\pm 0.$ $\pm.$		1 PLACE ± 0.2 $\pm.$		CHECKED BY & DATE B.K.CHOI		MOLEX INCORPORATED KOREA				
REV		ANGULAR: $\pm 0.2^\circ$		CAD FILENAME S3590375.DGN		MATERIAL NO. SEE NOTE 1		DRAWING NO. SD35903-0075		SHEET NO. 1/1		
DRAFT WHERE APPLICABLE MUST REMAIN WITHIN DIMENSIONS		THIS DRAWING CONTAINS INFORMATION THAT IS PROPRIETARY TO MOLEX INCORPORATED AND SHOULD NOT BE USED WITHOUT WRITTEN PERMISSION.										

5

4

3

2

MX-A4