



Data Sheet



Product Category: IF SAW Filter

Part Number	Package	Application	Last Modified
821-IF70.0M-GB	20.0 x 9.8mm SMD	IF SAW Filter	May. 12, 2007

TYPE :
70MHz SAW Filter

PART NUMBER :
821-IF70.0M-GB

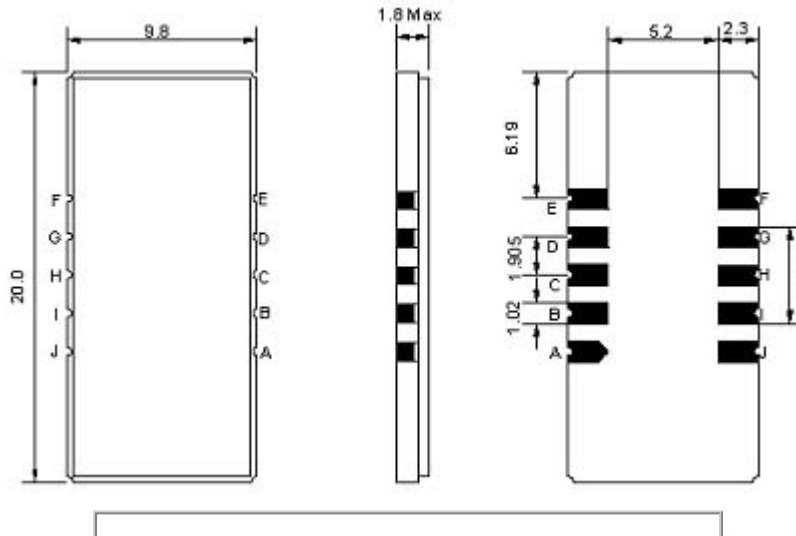


OPERATING CONDITIONS / ELECTRICAL CHARACTERISTICS

PARAMETERS	Minimum	Typical	Maximum	Units
Center Frequency (Fo)	69.95	70.0	70.15	MHz
Insertion Loss at Fo	-	22.5	24.0	dB
Source Impedance (single ended)*	-	50	-	ohm
Load Impedance (single ended)*	-	50	-	ohm
Bandwidth -1.0 dB	-	20.10	-	MHz
Bandwidth -3.0 dB	20.3	20.40	-	MHz
Bandwidth -40.0 dB	-	21.70	21.80	MHz
Lower Sidelobe	50	54	-	dB
Upper Sidelobe	50	53	-	dB
Amplitude Ripple (Fo +/-9.75MHz)	-	0.6	1.0	dBp-p
Attenuation Rejection	50	55	-	dB
Group Delay Variation(Fo +/-9.75MHz)	-	60	100	nsec
Absolute Delay @ Fo	-	2.35	-	µsec
Operating Temperature Range	-30	-	80	°C
Storage Temperature Range	-40	-	85	°C
Maximum DC Voltage	-	-	10	V
Maximum Input Power	-	-	10	dBm
Temperature Coefficient	-	-72	-	ppm/°C

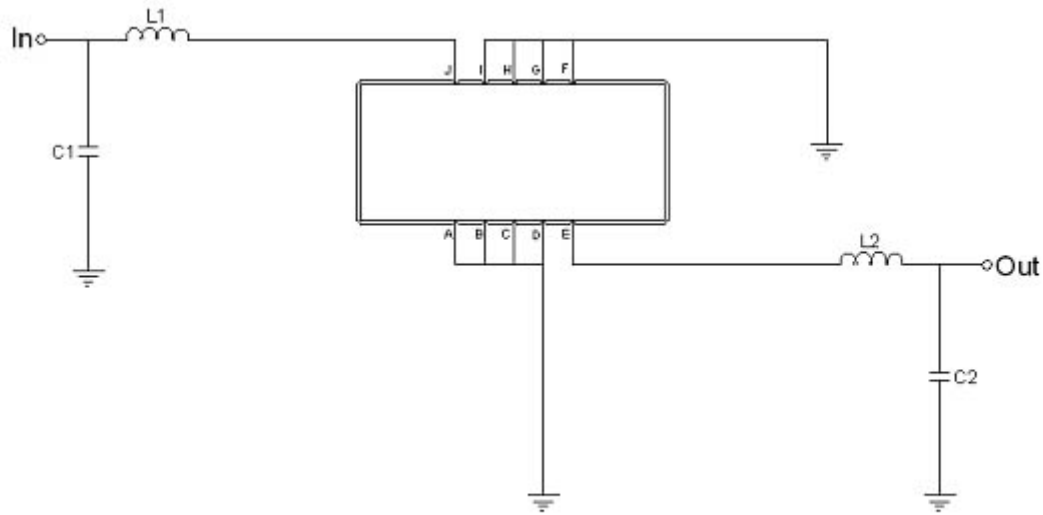
*With Matching Network(ref. Testing Environment Circuit as shown below).
Those impedances could be modified with different impedance values and/or structures, if necessary.

PACKAGE OUTLINE (mm)



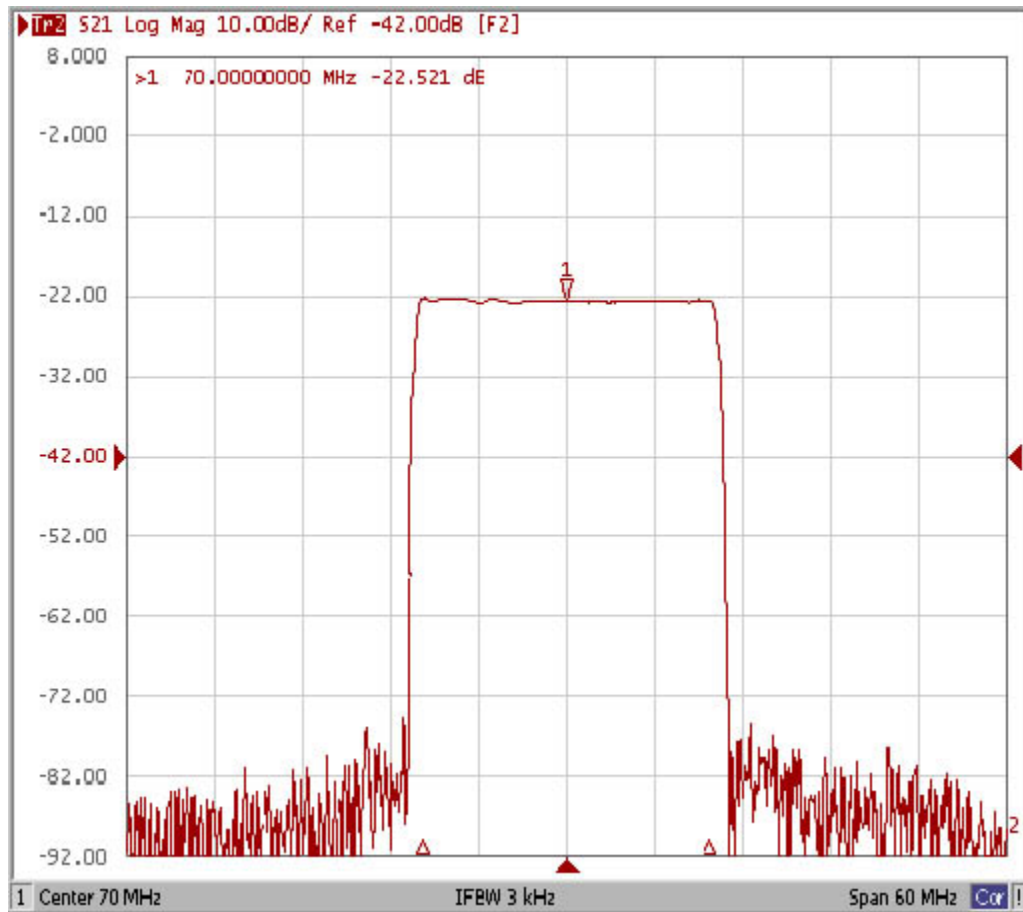
Pin Description	
A,B,C,D,F,G,H,I	Ground
J	Input
E	Output

TEST FIXTURE



Test Fixture and Values	
Input	L1=220nH, C1=24pF
Output	L2=180nH, C2=0pF
Source/Load Impedance	50 ohm

FREQUENCY RESPONSE



Oscilent Corporation - CALL **949.252.0522**

Part No.: 821-IF70.0M-GB

18195 East McDermott Street, Building D, Irvine, CA 92614, USA
Fax: 949.252.0599, E-Mail: Sales@Oscilent.com