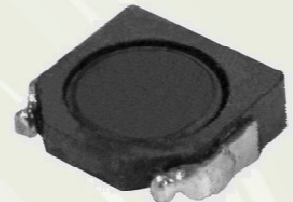


SMD Power Inductor CDRH26D11



■ Features

- ◎ Small size inductor: 3.1 × 2.8mm Max. (L × W) and 1.2mm Max height.
- ◎ Operating temperature range: -40°C~+105°C.
- ◎ Magnetically shielded.
- ◎ RoHS and Halogen-Free Compliance.

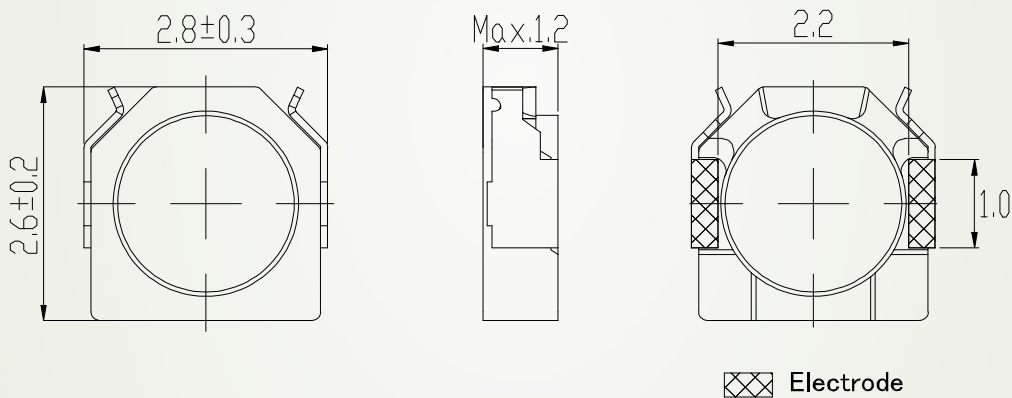


■ Applications

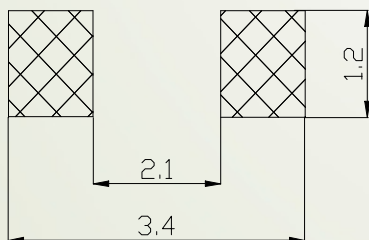
Low profile, surface mount inductor for MP3/MP4, mobile phone, DSC/DVC, and other portable devices.

■ Shapes and Dimensions/Recommended Land Patterns(mm)

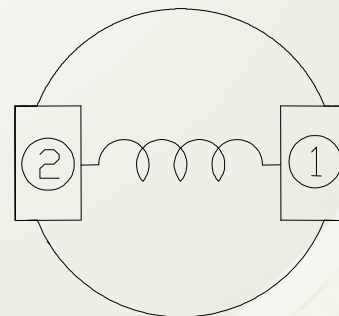
◆ Dimensions



◆ Land pattern



◆ Schematics (Bottom)



SMD Power Inductor CDRH26D11



■Electrical Characteristics specification.

Part No.	Stamp	Inductance 100kHz (μ H)	D.C.R.(m Ω) [Max.](Typ.) (20 $^{\circ}$ C)	Saturation Current (A) ※ 1		Temperature Rise Current (A) ※ 2
				(at 20 $^{\circ}$ C)	(at 105 $^{\circ}$ C)	
CDRH26D11NP-1R0NC	A	1.0 \pm 30%	67.5(54.0)	1.30	1.05	1.70
CDRH26D11NP-1R5PC	B	1.5 \pm 25%	77.5(62.0)	1.20	0.98	1.60
CDRH26D11NP-2R2PC	C	2.2 \pm 25%	111(81.1)	0.98	0.85	1.25
CDRH26D11NP-2R7PC	D	2.7 \pm 25%	122(97.7)	0.88	0.74	1.15
CDRH26D11NP-3R3PC	E	3.3 \pm 25%	135(108)	0.75	0.65	1.05
CDRH26D11NP-4R7PC	F	4.7 \pm 25%	225(180)	0.64	0.52	0.80
CDRH26D11NP-5R6PC	G	5.6 \pm 25%	261(209)	0.59	0.50	0.75
CDRH26D11NP-6R8PC	H	6.8 \pm 25%	280(224)	0.56	0.45	0.70
CDRH26D11NP-8R2PC	I	8.2 \pm 25%	386(309)	0.47	0.40	0.60
CDRH26D11NP-100PC	J	10 \pm 25%	431(345)	0.44	0.38	0.52
CDRH26D11NP-120PC	K	12 \pm 25%	601(481)	0.39	0.33	0.43
CDRH26D11NP-150PC	L	15 \pm 25%	694(555)	0.36	0.31	0.40

※1 Saturation Current: The DC current at which the inductance decreases to 70% of its nominal value.

※2 Temperature Rise Current: The DC current at which the temperature rise is $\Delta t=40^{\circ}\text{C}$ ($T_a=20^{\circ}\text{C}$).

For More Information

Hong Kong

Tel.+852-2880-6688
FAX.+852-2565-9600

Shanghai

Tel.+86-021-58363299
FAX.+86-021-58363266

Shenzhen

Tel.+86-755-82910228
FAX.+86-755-82910338

Taipei

Tel.+886-2-27065228
FAX.+886-2-27065229

Tokyo

Tel.+81-3-5202-7112
FAX.+81-3-5202-7105

Seoul

Tel.+82-2-6237-0777
FAX.+82-2-6237-0778

Singapore

Tel.+65-6296-3388
FAX.+65-6296-3390

Malaysia

Tel.+60-3-8733-0900
FAX.+60-3-8737-7384

Chicago

Tel.+1-847-545-6700
FAX. +1-847-545-6720

California

Tel.+1-408-321-9660
FAX. +1-408-321-9308

