

PLEASE CHECK WWW.MOLEX.COM FOR LATEST PART INFORMATION

Part Number: [0192150018](#)
Status: **Active**
Description: VersaKrimp™ Butt Splice for 14-16 AWG Wire

Documents:

[Drawing \(PDF\)](#) [RoHS Certificate of Compliance \(PDF\)](#)

Agency Certification

CSA LR18689
 UL E32244

General

Product Family Splices
 Series [19215](#)
 Crimp Quality Equipment Yes
 Mil-Spec N/A
 Product Name Butt, VersaKrimp™

Physical

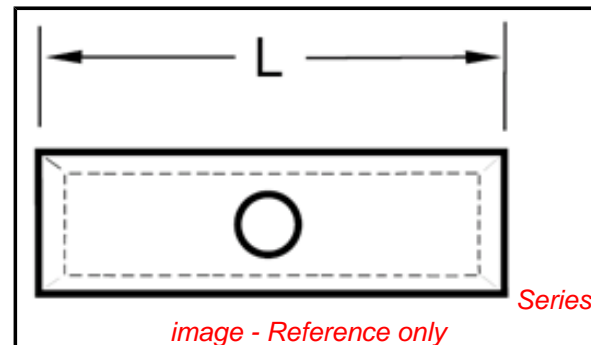
Barrel Type Closed - Brazed
 Insulation None
 Packaging Type Bag
 Wire Size AWG 14, 16

Material Info

Old Part Number BS-331

Reference - Drawing Numbers

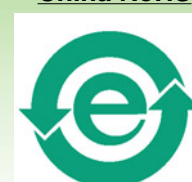
Sales Drawing SD-19215-002



EU RoHS

ELV and RoHS Compliant
REACH SVHC Contains SVHC: No
Halogen-Free Status

China RoHS



Need more information on product environmental compliance?

Email productcompliance@molex.com
 For a multiple part number RoHS Certificate of Compliance, [click here](#)

Please visit the [Contact Us](#) section for any non-product compliance questions.

Search Parts in this Series

[19215Series](#)

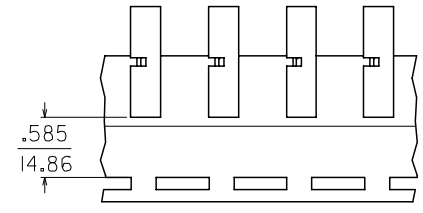
Application Tooling | FAQ

Tooling specifications and manuals are found by selecting the products below. Crimp Height Specifications are then contained in the Application Tooling Specification document.

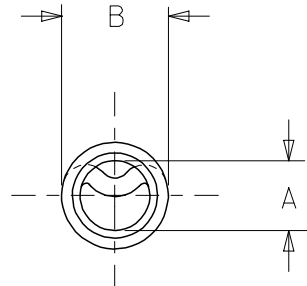
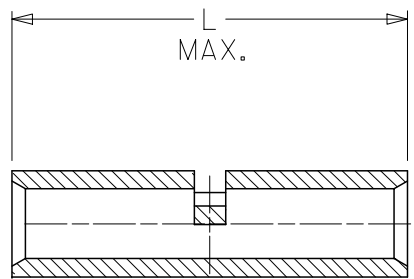
Global

Description	Product #
Hand Crimp Tool	0640030100
Crimp Head for the AT-200™ Pneumatic Hand Tool	0640070100

MATERIAL NUMBER	ENG. NUMBER	"L" MAX	"A" MIN.	"B" MAX	PACKAGING
192150018	BS-331	.675 (17.10)	.091 (2.31)	.160 (4.06)	LOOSE PIECE
192150022	BS-342-MX	.605 (15.37)	.088 (2.24)	.160 (4.06)	
192150115	BS-331T	.675 (17.10)	.091 (2.31)	.160 (4.06)	TAPE MOUNTED
192150250	BS-331US	.675 (17.10)	.091 (2.31)	.160 (4.06)	LOOSE PIECE
192150255	BS-331UST	.675 (17.10)	.091 (2.31)	.160 (4.06)	TAPE MOUNTED



PARTS ON TAPE



SALES DRAWING

- NOTES:
 1. MATERIAL: COPPER.
 2. PLATING: ELECTRO-TIN.
 3. ALL DIMENSIONS IN INCHES/(MM).

OBSO P/N 192150020 & -21 EC NO: ETC2006-0022 DRW:DMYRICK 2005/08/15 CHKD:RDEROSS 2005/08/15 APPR:RDEROSS 2005/08/15	QUALITY SYMBOLS
	▼=0
	▽=0
	REV

DESCRIPTION
REV

GENERAL TOLERANCES (UNLESS SPECIFIED)	mm	INCH
4 PLACES	± .005	± .0004
3 PLACES	± .004	± .0003
2 PLACES	± .003	± .0002
1 PLACE	± .002	± .0001
ANGULAR	± .005°	
DRAFT WHERE APPLICABLE MUST REMAIN WITHIN DIMENSIONS		

DIMENSION STYLE IN/MM	
DRAWN BY	DATE
JLOMASTRO	05/01/07
CHECKED BY	DATE
RDEROSS	05/01/07
APPROVED BY	DATE
RDEROSS	05/01/07
MATERIAL NO.	SEE CHART
SIZE	B

SCALE	DESIGN UNITS INCH	THIRD ANGLE PROJECTION
TITLE		
BUTT CONNECTOR SEAMLESS 16-14 AWG WIRE SIZE		
MOLEX INCORPORATED		
MATERIAL NO.	DOCUMENT NO.	SHEET NO.
SD-19215-002		1 OF 1
THIS DRAWING CONTAINS INFORMATION THAT IS PROPRIETARY TO MOLEX INCORPORATED AND SHOULD NOT BE USED WITHOUT WRITTEN PERMISSION		