

PLEASE CHECK WWW.MOLEX.COM FOR LATEST PART INFORMATION

Part Number: **0476621000**
Status: **Active**
Overview: slimline serial ata odd connectors
Description: 1.27mm (.050") Pitch Removable Interposer for Dual-Piece Slimline Serial ATA Connector Assembly, Right Angle, Through Hole, Gold (Au) Flash Plating, Leadfree

Documents:

[3D Model](#) [Product Specification PS-47657-001 \(PDF\)](#)
[Drawing \(PDF\)](#) [RoHS Certificate of Compliance \(PDF\)](#)

General

Product Family	PCB Receptacles
Series	<u>47662</u>
Application	Board-to-Board
Comments	Part is snap-fitted to the cover
Overview	<u>slimline serial ata odd connectors</u>
Product Name	Serial ATA, Slimline Serial ATA

Physical

Circuits (Loaded)	22
Circuits (maximum)	22
Color - Resin	Black
Durability (mating cycles max)	500
Glow-Wire Compliant	No
Guide to Mating Part	Yes
Keying to Mating Part	Yes
Lock to Mating Part	Yes
Material - Metal	Copper Alloy
Material - Plating Mating	Gold
Material - Resin	High Temperature Thermoplastic
Number of Rows	1
Orientation	Right Angle
PCB Locator	No
PCB Retention	None
Packaging Type	Tray
Pitch - Mating Interface (in)	0.050 In
Pitch - Mating Interface (mm)	1.27 mm
Pitch - Term. Interface (in)	0.050 In
Pitch - Term. Interface (mm)	1.27 mm
Polarized to Mating Part	Yes
Polarized to PCB	Yes
Stackable	No
Temperature Range - Operating	-35°C to +85°C
Termination Interface: Style	Surface Mount

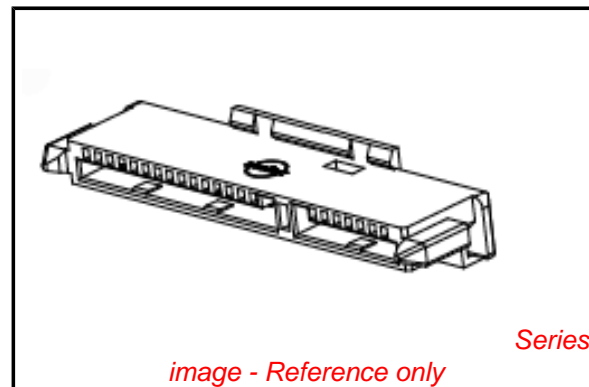
Electrical

Current - Maximum per Contact	1.5A
Grounding to PCB	Yes
Voltage - Maximum	15V DC

Solder Process Data

Duration at Max. Process Temperature (seconds)	10
Lead-free Process Capability	Reflow Capable (SMT only)
Max. Cycles at Max. Process Temperature	1
Process Temperature max. C	260

Material Info



EU RoHS

ELV and RoHS Compliant
REACH SVHC
Contains SVHC: No
Halogen-Free Status

China RoHS



Need more information on product environmental compliance?

Email productcompliance@molex.com
 For a multiple part number RoHS Certificate of Compliance, [click here](#)

Please visit the [Contact Us](#) section for any non-product compliance questions.

Search Parts in this Series
 47662Series

Reference - Drawing Numbers

Packaging Specification

Product Specification

Sales Drawing

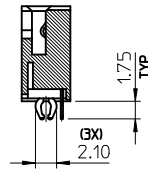
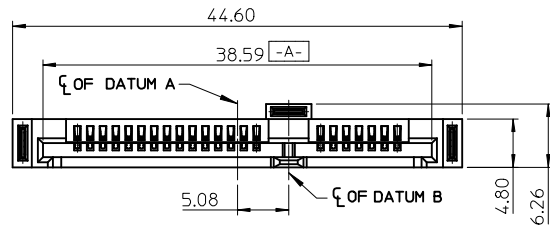
PK-47662-001

PS-47657-001

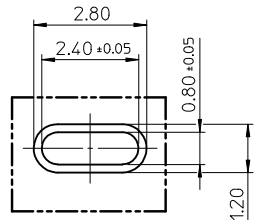
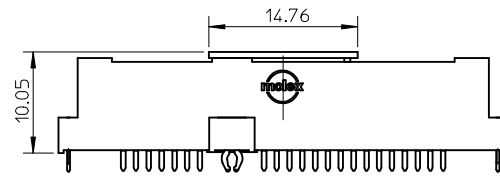
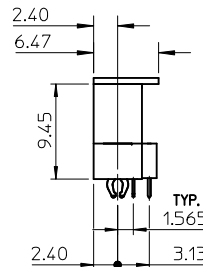
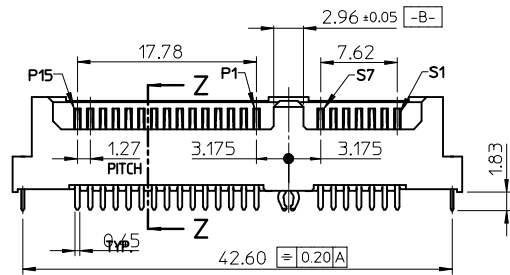
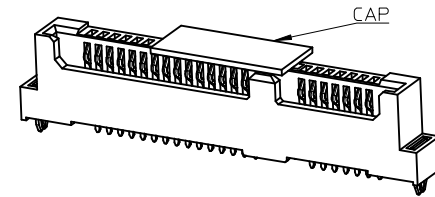
SD-47662-100

This document was generated on 05/31/2010

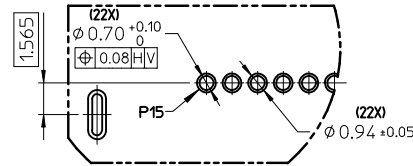
PLEASE CHECK WWW.MOLEX.COM FOR LATEST PART INFORMATION



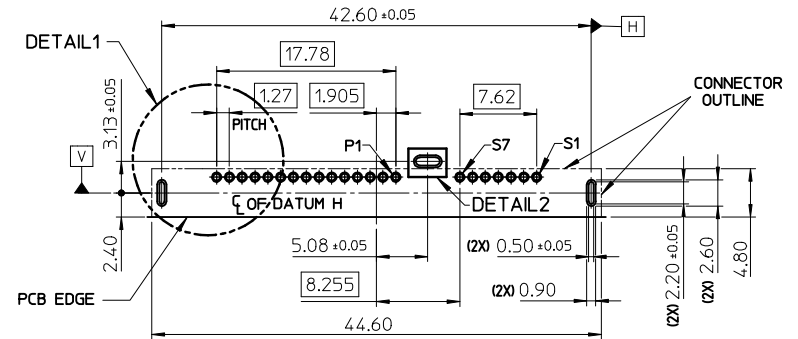
SECTION Z-Z



DETAIL 2



DETAIL 1



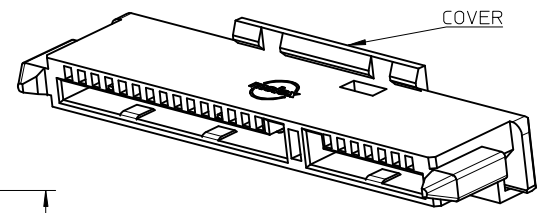
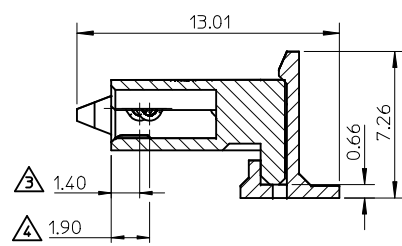
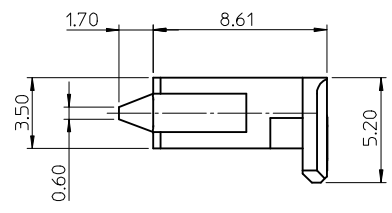
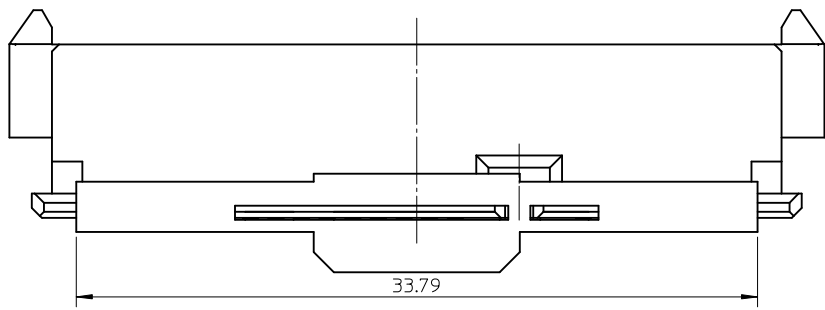
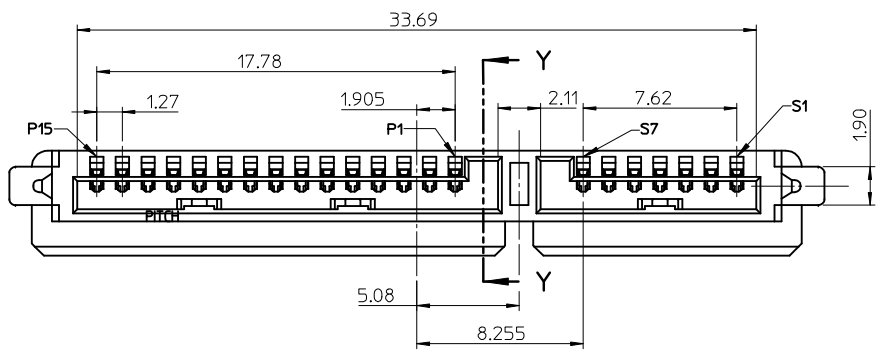
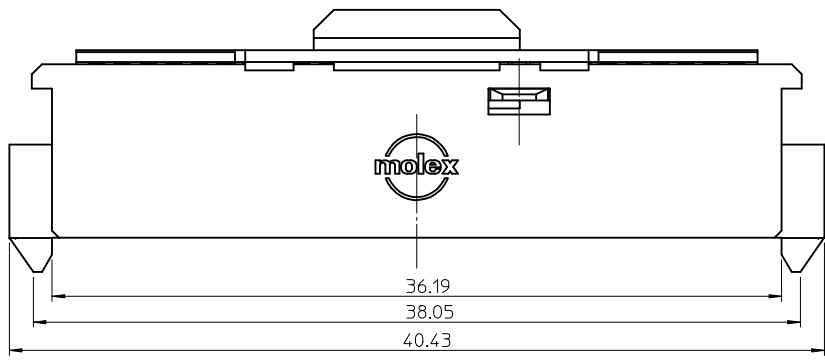
NOTES :

- MATERIAL :
HOUSING : HIGH TEMPERATURE THERMOPLASTIC, UL94V-0, BLACK
TERMINAL : COPPER ALLOY
NUT : COPPER ALLOY
- PLATING :
TERMINAL :
CONTACT AREA : GOLD PLATING.
SOLDER AREA : MATTE TIN PLATING.
UNDERPLATING : NICKEL PLATING.
NUT :
NICKEL PLATING 1.25 MICROMETER MIN OVER ALL.
- PRODUCT SPEC: PS-47657-001.
- COMPLIANT TO RoHS DIRECTIVE 2002/95/EC AND ELV 2000/53/EC.

P/N	CONTACT GOLD PLATING SPEC
47662-2000	Au FLASH
47662-2001	Au 15u" MIN
47662-2002	Au 30u" MIN

RECOMMENDED PCB LAYOUT
(PCB THICKNESS=1.2MM ± 0.05MM)

NEW RELEASE EC NO: SH2010-0016 DRW:GLL CHKD:XJ SONG APPR:RZHANG 2009/08/27	QUALITY SYMBOLS ▽=0 ◻=0	GENERAL TOLERANCES (UNLESS SPECIFIED)		DIMENSION STYLE MM ONLY	SCALE 2:1	DESIGN UNITS METRIC	THIRD ANGLE PROJECTION		
		4 PLACES ± --- ± --- 3 PLACES ± --- ± --- 2 PLACES ± 0.20 ± --- 1 PLACE ± 0.25 ± ---	mm INCH	DRAWN BY DIXON LI	DATE 2008/12/24	TITLE REMOVABLE SATA 22 PINS RESERVE DIP TYPE HEADER			
		ANGULAR ± 3 °		CHECKED BY STARY SONG	DATE 2008/12/24	MOLEX INCORPORATED			
		DRAFT WHERE APPLICABLE MUST REMAIN WITHIN DIMENSIONS		APPROVED BY HARVEY WANG	DATE 2008/12/24	MATERIAL NO. SEE CHART	DOCUMENT NO. SD-47662-100	SHEET NO. 1 OF 3	



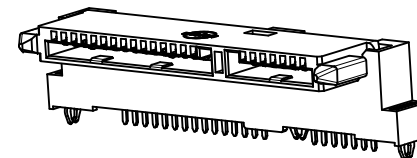
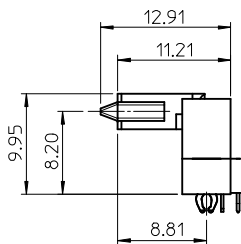
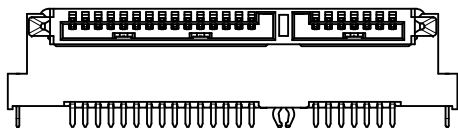
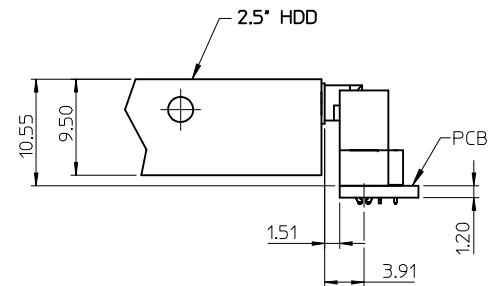
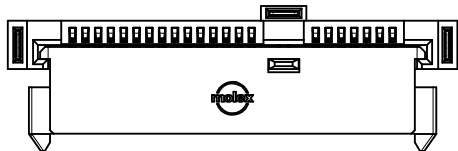
NOTES :

- MATERIAL :
HOUSING : HIGH TEMPERATURE THERMOPLASTIC, UL94V-0, BLACK
TERMINAL : COPPER ALLOY
- PLATING :
TERMINAL :
CONTACT AREA : GOLD PLATING.
UNDERPLATING : NICKEL PLATING.

△ FOR PIN P4 & P12 ONLY.
△ FOR ALL OTHER PINS.

P/N	CONTACT GOLD PLATING SPEC
47662-1000	Au FLASH
47662-1001	Au 15u" MIN
47662-1002	Au 30u" MIN

<p>NEW RELEASE EC NO: SHZ010-0016 DRW:GLL CHKD:XJSONG APPR:RZHANG 2009/08/21</p>	QUALITY SYMBOLS	GENERAL TOLERANCES (UNLESS SPECIFIED)	DIMENSION STYLE	SCALE	DESIGN UNITS	THIRD ANGLE PROJECTION															
	<p>▽=0 C=0</p>	<table border="1"> <thead> <tr> <th></th> <th>mm</th> <th>INCH</th> </tr> </thead> <tbody> <tr> <td>4 PLACES</td> <td>± ---</td> <td>± ---</td> </tr> <tr> <td>3 PLACES</td> <td>± ---</td> <td>± ---</td> </tr> <tr> <td>2 PLACES</td> <td>± 0.20</td> <td>± ---</td> </tr> <tr> <td>1 PLACE</td> <td>± 0.25</td> <td>± ---</td> </tr> </tbody> </table>		mm	INCH	4 PLACES	± ---	± ---	3 PLACES	± ---	± ---	2 PLACES	± 0.20	± ---	1 PLACE	± 0.25	± ---	MM ONLY	4:1	METRIC	
		mm	INCH																		
	4 PLACES	± ---	± ---																		
3 PLACES	± ---	± ---																			
2 PLACES	± 0.20	± ---																			
1 PLACE	± 0.25	± ---																			
DESCRIPTION	<table border="1"> <thead> <tr> <th>DRAWN BY</th> <th>DATE</th> </tr> </thead> <tbody> <tr> <td>DIXON LI</td> <td>2008/12/24</td> </tr> <tr> <th>CHECKED BY</th> <th>DATE</th> </tr> <tr> <td>STARY SONG</td> <td>2008/12/24</td> </tr> <tr> <th>APPROVED BY</th> <th>DATE</th> </tr> <tr> <td>HARVEY WANG</td> <td>2008/12/24</td> </tr> </tbody> </table>	DRAWN BY	DATE	DIXON LI	2008/12/24	CHECKED BY	DATE	STARY SONG	2008/12/24	APPROVED BY	DATE	HARVEY WANG	2008/12/24	TITLE	<p>REMOVABLE SATA 22 PINS RESERVE DIP TYPE INTERPOSER</p>						
DRAWN BY	DATE																				
DIXON LI	2008/12/24																				
CHECKED BY	DATE																				
STARY SONG	2008/12/24																				
APPROVED BY	DATE																				
HARVEY WANG	2008/12/24																				
REV	<p>ANGULAR ± 3 °</p> <p>DRAFT WHERE APPLICABLE MUST REMAIN WITHIN DIMENSIONS</p>	MATERIAL NO.	DOCUMENT NO.	<p>MOLEX INCORPORATED</p>																	
A	SEE CHART	SD-47662-100		<p>SHEET NO. 2 OF 3</p>																	
		SIZE	<p>THIS DRAWING CONTAINS INFORMATION THAT IS PROPRIETARY TO MOLEX INCORPORATED AND SHOULD NOT BE USED WITHOUT WRITTEN PERMISSION</p>																		
		A3																			



ASSEMBLY DRAWING

NEW RELEASE EC NO: SH2010-0016 DRWG:GLL CHKD:XJSONG APPR:RZHANG 2009/08/21	DESCRIPTION REV	QUALITY SYMBOLS	GENERAL TOLERANCES (UNLESS SPECIFIED)	DIMENSION STYLE MM ONLY	SCALE 2:1	DESIGN UNITS METRIC	THIRD ANGLE PROJECTION	
		$\nabla=0$ $\nabla C=0$	mm INCH 4 PLACES ± --- ± --- 3 PLACES ± --- ± --- 2 PLACES ± 0.20 ± --- 1 PLACE ± 0.25 ± --- ANGULAR ± 3 °	DRAWN BY DATE DIXON LI 2008/12/24 CHECKED BY DATE STARY SONG 2008/12/24 APPROVED BY DATE HARVEY WANG 2008/12/24	TITLE	REMOVABLE SATA 22 PINS RESERVE DIP TYPE ASSEMBLY		
		DRAFT WHERE APPLICABLE MUST REMAIN WITHIN DIMENSIONS	SEE SHEET1 & SHEET2	MOLEX INCORPORATED DOCUMENT NO. SD-47662-100			SHEET NO. 3 OF 3	
		SIZE A3	THIS DRAWING CONTAINS INFORMATION THAT IS PROPRIETARY TO MOLEX INCORPORATED AND SHOULD NOT BE USED WITHOUT WRITTEN PERMISSION					