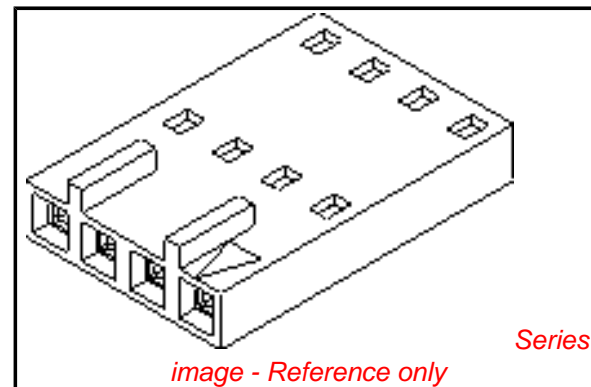


**PLEASE CHECK WWW.MOLEX.COM FOR LATEST PART INFORMATION**

**Part Number:** [0050579222](#)  
**Status:** **Active**  
**Overview:** [cgrid\\_sl\\_products](#)  
**Description:** 2.54mm (.100") Pitch SL™ Crimp Housing, Single Row, Version C, Front Ribs, 22 Circuits

**Documents:**

<a href="#">3D Model</a>	<a href="#">Product Specification PS-70058 (PDF)</a>
<a href="#">Packaging Specification (PDF)</a>	<a href="#">Product Specification PS-70400 (PDF)</a>
<a href="#">Drawing (PDF)</a>	<a href="#">RoHS Certificate of Compliance (PDF)</a>



**Agency Certification**

CSA	LR19980
TUV	R72081037
UL	E29179

**General**

Product Family	Crimp Housings
Series	<a href="#">70066</a>
Comments	Version C
Overview	<a href="#">cgrid_sl_products</a>
Product Name	SL™

**Physical**

Circuits (maximum)	22
Color - Resin	Black
Flammability	94V-0
Gender	Female
Glow-Wire Compliant	No
Material - Resin	Polyester Alloy
Number of Rows	1
Packaging Type	Bag
Panel Mount	No
Pitch - Mating Interface (in)	0.100 In
Pitch - Mating Interface (mm)	2.54 mm
Stackable	No
Temperature Range - Operating	-40°C to +105°C

**Material Info**

Old Part Number	70066-0091
-----------------	------------

**Reference - Drawing Numbers**

Packaging Specification	PK-70066-100
Product Specification	PS-70058, PS-70400
Sales Drawing	SD-70066-0071-0094
Test Summary	TS-70058-001

**EU RoHS**  
**ELV and RoHS**  
**Compliant**  
**REACH SVHC**  
**Contains SVHC: No**  
**Halogen-Free**  
**Status**  
**Not Reviewed**

**China RoHS**



**Need more information on product environmental compliance?**

Email [productcompliance@molex.com](mailto:productcompliance@molex.com)  
 For a multiple part number RoHS Certificate of Compliance, [click here](#)

Please visit the [Contact Us](#) section for any non-product compliance questions.

**Search Parts in this Series**

[70066Series](#)

**Mates With**

[70544](#), [70546](#), [70554](#) , [70556](#), [70543](#), [70545](#) , [70553](#) , [70555](#)

**Use With**

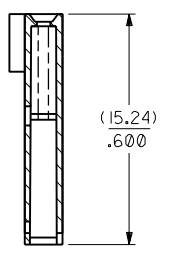
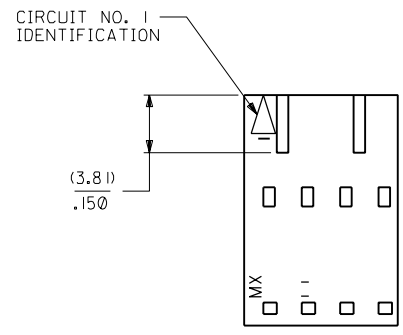
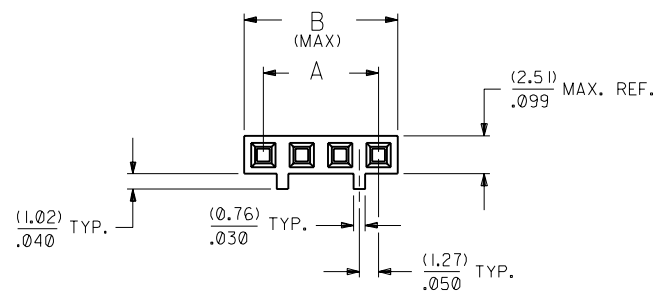
[70058](#) , [71851](#)

70066

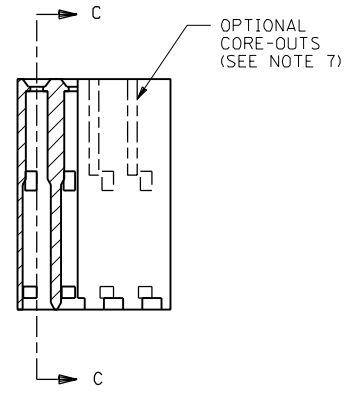
**NOTES:**

- 1) MATERIAL: G.F. POLYESTER
- 2) HOUSING TO BE USE WITH TERMINAL PT. NO. 70058-\*\*\*\*
- 3) SEE CHART FOR CIRCUIT SIZES.
- 4) TO BE USED WITH (0.64)/.025 SQ. OR RD. PINS.
- 5) PARTS STACKABLE END TO END ON (2.54)/.100 CENTERS.
- 6) REFER TO PRODUCT SPECIFICATION NO. : P.S.-70058
- 7) PARTS MAY OR MAY NOT BE SUPPLIED WITH EXTERIOR CORE-OUT CONFIGURATION. SEE DWG. SD-70066-\*\*\*\* FOR OPTIONAL HOUSING DETAILS.
- 8) PACKAGE PER PK-70066-100.

**OPTION "C"**



SECTION C-C



CKT. SIZE	EDP. NO.	ENG. NO.	A	B
2	50-57-9202	70066-0071	(2.54)/.100	(5.05)/.199
3	50-57-9203	70066-0072	(5.08)/.200	(7.59)/.299
4	50-57-9204	70066-0073	(7.62)/.300	(10.13)/.399
5	50-57-9205	70066-0074	(10.16)/.400	(12.67)/.499
6	50-57-9206	70066-0075	(12.70)/.500	(15.21)/.599
7	50-57-9207	70066-0076	(15.24)/.600	(17.75)/.699
8	50-57-9208	70066-0077	(17.78)/.700	(20.29)/.799
9	50-57-9209	70066-0078	(20.32)/.800	(22.83)/.899
10	50-57-9210	70066-0079	(22.86)/.900	(25.37)/.999
11	50-57-9211	70066-0080	(25.40)/1.000	(27.91)/1.099
12	50-57-9212	70066-0081	(27.94)/1.100	(30.45)/1.199
13	50-57-9213	70066-0082	(30.48)/1.200	(32.99)/1.299
14	50-57-9214	70066-0083	(33.02)/1.300	(35.53)/1.399
15	50-57-9215	70066-0084	(35.56)/1.400	(38.07)/1.499
16	50-57-9216	70066-0085	(38.10)/1.500	(40.61)/1.599
17	50-57-9217	70066-0086	(40.64)/1.600	(43.15)/1.699
18	50-57-9218	70066-0087	(43.18)/1.700	(45.69)/1.799
19	50-57-9219	70066-0088	(45.72)/1.800	(48.23)/1.899
20	50-57-9220	70066-0089	(48.26)/1.900	(50.77)/1.999
21	50-57-9221	70066-0090	(50.80)/2.000	(53.31)/2.099
22	50-57-9222	70066-0091	(53.34)/2.100	(55.85)/2.199
23	50-57-9223	70066-0092	(55.88)/2.200	(58.39)/2.299
24	50-57-9224	70066-0093	(58.42)/2.300	(60.93)/2.399
25	50-57-9225	70066-0094	(60.96)/2.400	(63.47)/2.499

REVISIONS LTR. REVISIONS LTR. REVISIONS		E REVISOR PER ECR# U10967 8-8-91 MJM/MGB D REVISOR PER ECR# U80051 3-27-89 MCB C REDRAWN ON CAD ECR # 9120 5/5/86 WZ		DIMENSIONS SHOWN (METRIC) INCH UNLESS OTHERWISE SPECIFIED TOLERANCES: ANGULAR ± 1/2° 3 PLACE ± .010 INCH --- METRIC 2 PLACE ± .014 ± 0.25 1 PLACE --- ± 0.35 DRAFT WHERE APPLICABLE MUST REMAIN WITHIN DIMENSIONS DRWG. NO. SD-70066-0071-0094 FILE NAME 700660071 THIS DRAWING CONTAINS INFORMATION THAT IS PROPRIETARY TO MOLEX INC. AND SHOULD NOT BE USED WITHOUT WRITTEN PERMISSION.		MFG. SH. REV. TITLE HOUSING CONNECTOR (2.54)/.100 GRID STACKABLE SINGLE ROW MOLEX INCORPORATED SHEET NO. 1 DATE 03/26/86 L1SLE,ILL. 60532 U.S.A. DIV. DA	
--	--	--	--	--	--	--	--