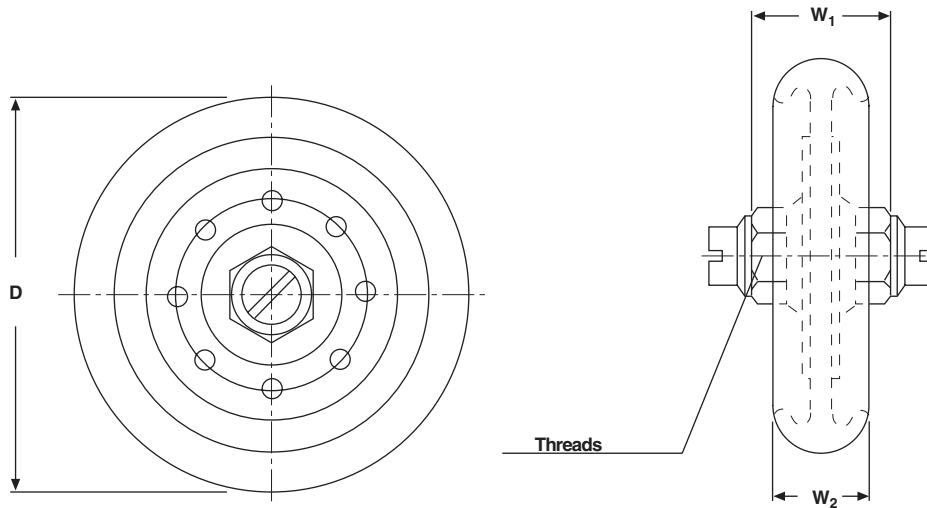


## Plate Capacitors with Contoured Rim - Class 1 Ceramic

**PS 20 5 KV<sub>P</sub>**  
**PS 30 5 KV<sub>P</sub> to 7.5 KV<sub>P</sub>**  
**PS 40 5 KV<sub>P</sub>**  
**PS 55 5 KV<sub>P</sub>**



• Dimensions in millimeters (inches)

MODEL	PS 20	PS 30	PS 40	PS 55
D	25 max. (0.984 max.)	35 max. (1.378 max.)	45 max. (1.772 max.)	57 max. (2.244 max.)
W <sub>1</sub>	22 max. (0.866 max.)	22 max. (0.866 max.)	21 max. (0.823 max.)	21 max. (0.823 max.)
W <sub>2</sub>	14 max. (0.551 max.)	14 max. (0.551 max.)	14 max. (0.551 max.)	14 max. (0.551 max.)
Threads	M 5		M 6	

**MATERIAL:**

Capacitor elements made from Class 1 ceramic dielectric with noble metal electrodes.  
 Connection Terminals: Copper/brass, silver plated.

**FINISH:**

Noble metal electrodes and contoured rim completely lacquered.

**MARKING:**

Type designator, Capacitance value and tolerance, Rated voltage (peak value), Production date code, Ceramic material code, DRALORIC.

**ACCESSORIES ADDED:**

Screws and washers.

ORDERING INFORMATION				
PS 30	5 KV <sub>P</sub>	68 pF	± 20 %	R 42
MODEL	RATED VOLTAGE	CAPACITANCE VALUE	TOLERANCE	CERAMIC



# PS 20, 30, 40, 55 - Class 1

Plate Capacitors with Contoured Rim - Class 2 Ceramic Vishay Draloric

<b>PS 20</b>				
CERAMIC	CAPACITANCE VALUE [pF]	RATED VOLTAGE [KV <sub>P</sub> ]	RATED POWER* [KVA <sub>r</sub> ]	RATED CURRENT [A <sub>RMS</sub> ]
R 7	5.6	5	5	5
	6.8			
R 16	8.2	5	10	5
	10			
	12			
R 42	15	5	15	5
	18			
	20			
	22			
R 85	27	5	25	5
	33			
	39			
	47			
	56			
N 2200	68	5	10	5
	82			
	100			
	120			
	150			
N 2200	180	5	10	5
	220			
	270			

<b>PS 30</b>				
CERAMIC	CAPACITANCE VALUE [pF]	RATED VOLTAGE [KV <sub>P</sub> ]	RATED POWER* [KVA <sub>r</sub> ]	RATED CURRENT [A <sub>RMS</sub> ]
R 7	10	5	8	10
	12			
	15			
	18			
R 16	20	5	15	10
	22			
	27			
	33			
	39			
R 42	47	5	20	10
	56			
	68			
	82			
R 85	100	5	30	10
	120	7.5		
	150	5		
	180			
	200			
N 2200	220	5	15	10
	270			
	330			
	390			
	470			
	560			

<b>PS 40</b>				
CERAMIC	CAPACITANCE VALUE [pF]	RATED VOLTAGE [KV <sub>P</sub> ]	RATED POWER* [KVA <sub>r</sub> ]	RATED CURRENT [A <sub>RMS</sub> ]
R 7	22	5	12	15
	27			
R 16	33	5	20	15
	39			
	47			
	56			
R 42	68	5	25	15
	82			
	91			
	100			
R 85	120	5	35	15
	150			
	180			
	200			
	220			
	240			
	250			
	270			
N 2200	330	5	20	15
	360			
	390			
	470			
	560			
N 2200	680	5	20	15
	820			
	1000			

<b>PS 55</b>				
CERAMIC	CAPACITANCE VALUE [pF]	RATED VOLTAGE [KV <sub>P</sub> ]	RATED POWER* [KVA <sub>r</sub> ]	RATED CURRENT [A <sub>RMS</sub> ]
R 7	22	5	15	18
	27			
	33			
	39			
	47			
R 16	56	5	40	18
	68			
	82			
	100			
R 42	120	5	40	18
	150			
	180			
	220			
	270			
R 85	330	5	55	18
	390			
	470			
	500			
	510			
	560			
	600			
	680			
	820			
	1000			
N 2200	1200	5	25	18
	1500			
	1800			
	2000			

**CAPACITANCE TOLERANCES:**

< 10 pF: ± 2 pF, ± 1 pF, ± 0.5 pF  
 ≥ 10 pF: ± 20 %, ± 10 %, ± 5 %

\* The surface temperature of 100 °C must not be exceeded.



## Disclaimer

All product specifications and data are subject to change without notice.

Vishay Intertechnology, Inc., its affiliates, agents, and employees, and all persons acting on its or their behalf (collectively, "Vishay"), disclaim any and all liability for any errors, inaccuracies or incompleteness contained herein or in any other disclosure relating to any product.

Vishay disclaims any and all liability arising out of the use or application of any product described herein or of any information provided herein to the maximum extent permitted by law. The product specifications do not expand or otherwise modify Vishay's terms and conditions of purchase, including but not limited to the warranty expressed therein, which apply to these products.

No license, express or implied, by estoppel or otherwise, to any intellectual property rights is granted by this document or by any conduct of Vishay.

The products shown herein are not designed for use in medical, life-saving, or life-sustaining applications unless otherwise expressly indicated. Customers using or selling Vishay products not expressly indicated for use in such applications do so entirely at their own risk and agree to fully indemnify Vishay for any damages arising or resulting from such use or sale. Please contact authorized Vishay personnel to obtain written terms and conditions regarding products designed for such applications.

Product names and markings noted herein may be trademarks of their respective owners.