

PLEASE CHECK WWW.MOLEX.COM FOR LATEST PART INFORMATION

Part Number: [0190690241](#)
Status: **Active**
Description: Krimptite™ Ring Tongue Terminal for 10-12 AWG Wire, Stud Size 3/8", Length 26.82mm (1.056")

Documents:

[Drawing \(PDF\)](#) [RoHS Certificate of Compliance \(PDF\)](#)

Agency Certification

CSA LR18689
 UL E32244

General

Product Family Ring and Spade Terminals
 Series [19069](#)
 Crimp Quality Equipment Yes
 Mil-Spec N/A
 MolexKits Yes
 Product Name Krimptite™
 Type Ring

Physical

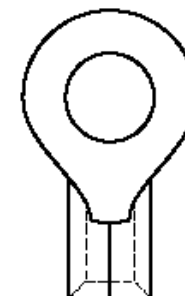
Barrel Type Closed
 Insulation None
 Material - Plating Mating Tin
 Packaging Type Bag
 Plating min: Mating (µin) 100
 Plating min: Mating (µm) 2.5
 Plating min: Termination (µin) 100
 Plating min: Termination (µm) 2.5
 Stud Size 3/8" (M9)
 Wire Size AWG 10, 12
 Wire Size mm² 4.00 - 6.00

Material Info

Old Part Number C-140-38

Reference - Drawing Numbers

Sales Drawing CCD10101



*Series
 image - Reference only*

EU RoHS

**ELV and RoHS
 Compliant**
**REACH SVHC
 Contains SVHC: No**
**Halogen-Free
 Status**

China RoHS



**Need more information on product
 environmental compliance?**

Email productcompliance@molex.com
 For a multiple part number RoHS Certificate of Compliance, [click here](#)

Please visit the [Contact Us](#) section for any non-product compliance questions.

Search Parts in this Series

[19069Series](#)

Application Tooling | [FAQ](#)

Tooling specifications and manuals are found by selecting the products below. Crimp Height Specifications are then contained in the Application Tooling Specification document.

Global

Description	Product #
Hand Crimp Tool	0640030100
Crimp Head for the AT-200™ Pneumatic Hand Tool	0640070100

NOTES: 1.001

① MAT'L: COPPER (STOCK TKN $\frac{.040}{1.02}$)

PLATING: ELECTRO-TIN

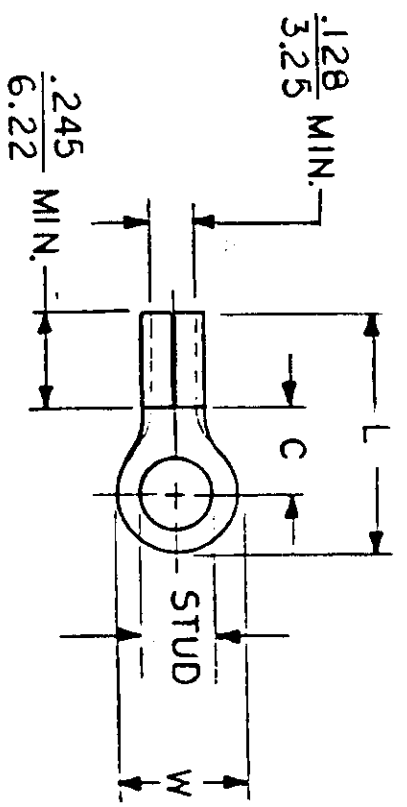
STUD SIZES: ($\pm .005$)

- 02 = .094 209 = .209
- 04 = .119 413 = .413
- 06 = .146
- 08 = .173
- 10 = .198
- 14 = .265
- 56 = .328
- 38 = .390

UL LISTING # E32244
 CSA LISTING # 18689

ALL DIMENSIONS = INCHES
 M M

WIRE SIZE: 12-10 AWG
 4.0-6.0 MM²



FILE NO. C-CD-101-01

PART NUMBER	"W" ±.010	"C" MIN.	"L" MAX.	REFERENCE		TITLE:	AVAILABLE STUD SIZES
				SCALE:	NTS		
C-101-	$\frac{.750}{19.05}$	$\frac{.611}{15.52}$	$\frac{1.280}{32.51}$	SCALE:	NTS	RING TONGUE	14, 56, 38, 76, 12
C-128-	$\frac{.375}{9.53}$	$\frac{.303}{7.70}$	$\frac{.785}{19.94}$	SCALE:	NTS	TERMINAL	04, 06, 08, 10, 209
C-130-	$\frac{.530}{13.46}$	$\frac{.393}{9.98}$	$\frac{.952}{24.18}$	SCALE:	NTS	KRIMP TITE	10, 14, 56, 38, 209, 413
C-136-	$\frac{.282}{7.16}$	$\frac{.306}{7.77}$	$\frac{.741}{18.82}$	SCALE:	NTS	100-SERIES	
C-140-	$\frac{.592}{15.04}$	$\frac{.468}{11.89}$	$\frac{1.056}{26.82}$	SCALE:	NTS		
DIMENSIONAL TOLERANCES UNLESS OTHERWISE SPECIFIED				DATE:	2-10-92	EITC molex INCORPORATED	
FRAC.	DEC.	ANG.	CHKD. BY:	APPRD. BY:	DWG. NO.	A	CUSTOMER DWG.