

PLEASE CHECK WWW.MOLEX.COM FOR LATEST PART INFORMATION

Part Number: [0430610014](#)
Status: **Active**
Overview: [spox](#)
Description: 3.96mm (.156") Pitch SPOX™ Housing, 3 Circuits

Documents:

[3D Model](#) [RoHS Certificate of Compliance \(PDF\)](#)
[Drawing \(PDF\)](#)

Agency Certification

CSA LR19980
 UL E29179

General

Product Family Crimp Housings
 Series [43061](#)
 Overview [spox](#)
 Product Name SPOX™

Physical

Breakaway No
 Circuits (maximum) 3
 Circuits Detail 3
 Color - Resin Natural
 Flammability 94V-0
 Gender Female
 Glow-Wire Compliant No
 Keying to Mating Part None
 Material - Resin Polyester
 Number of Rows 1
 Packaging Type Bag
 Panel Mount No
 Pitch - Mating Interface (in) 0.156 In
 Pitch - Mating Interface (mm) 3.96 mm
 Stackable No
 Temperature Range - Operating 0°C to +75°C

Material Info

Reference - Drawing Numbers

Packaging Specification PK-43061-001
 Sales Drawing SD-43061



image - Reference only

EU RoHS

**ELV and RoHS
 Compliant**
**REACH SVHC
 Contains SVHC: No**
**Halogen-Free
 Status
 Not Reviewed**

China RoHS



**Need more information on product
 environmental compliance?**

Email productcompliance@molex.com
 For a multiple part number RoHS Certificate of
 Compliance, [click here](#)

Please visit the [Contact Us](#) section for any
 non-product compliance questions.

Search Parts in this Series

[43061Series](#)

Mates With

(.156") Pitch SPOX® Housing, 3 Circuits

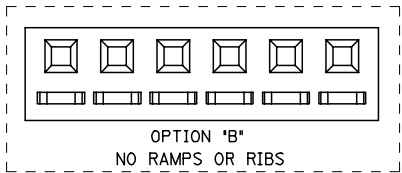
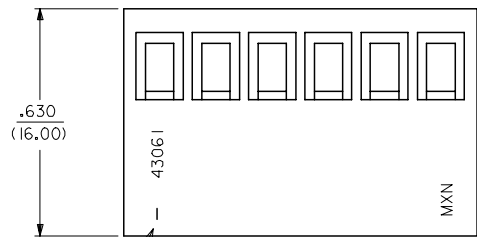
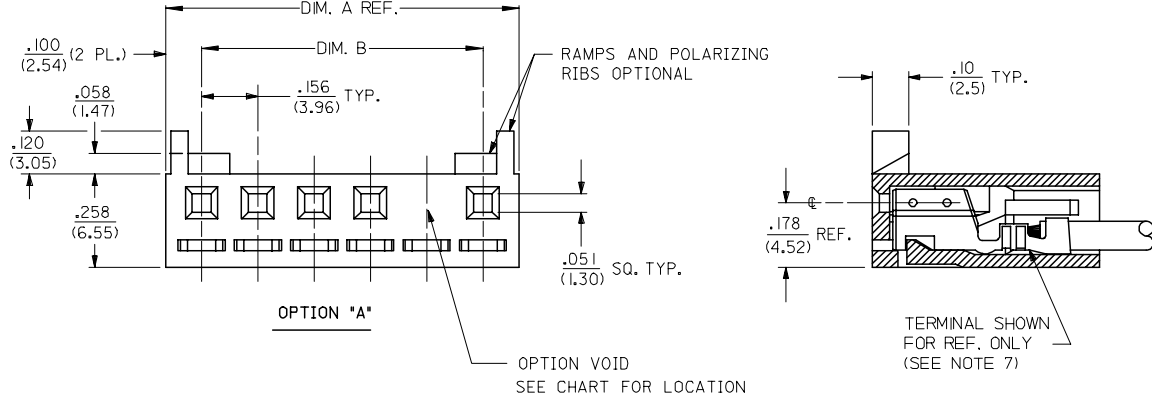
Use With

3.96mm (.156") Pitch SPOX™ Housing

NO. OF CKTS.	DIM. A	DIM. B
2	.357 (9.06)	.156 (3.96)
3	.513 (13.02)	.312 (7.92)
4	.669 (16.98)	.468 (11.88)
5	.824 (20.94)	.624 (15.84)
6	.980 (24.90)	.780 (19.80)
7	1.136 (28.86)	.935 (23.76)
8	1.292 (32.82)	1.091 (27.72)
9	1.448 (36.78)	1.247 (31.68)
10	1.604 (40.74)	1.403 (35.64)
11	1.760 (44.70)	1.560 (39.60)
12	1.916 (48.66)	1.715 (43.56)

NOTES:

- 1) MATERIAL: GLASS FILLED POLYESTER, 94V-0
MATERIAL NUMBERS 43061-0*** : COLOR - NATURAL
MATERIAL NUMBERS 43061-1*** : COLOR - BLACK
MATERIAL NUMBERS 43061-2*** : COLOR - BLUE
- 2) FINISH: SEE TERMINAL DWGS.
- 3) FOR ADDITIONAL HOUSING INFORMATION REFER TO DWG. NO. 5195 OR P.S. 5195.
FOR ADDITIONAL TERMINAL INFORMATION REFER TO DWG. NO. 5194 OR 5225, OR P.S. 5194 OR 5225.
- 4) PACKAGING SPECIFICATION: PK-43061-001
- 5) MATES WITH .156/(3.96) CENTER HEADERS AND .045/(1.14) SQUARE PINS.
- 6) CONNECTOR IS DESIGNED FOR USE WITH 18-28 AWG WIRE.
- 7) HOUSING IS DESIGNED FOR USE WITH 5194 (18-22 AWG) AND 5225 (24-28 AWG) TERMINALS.
- 8) THIS PART CONFORMS TO CLASS B REQUIREMENTS OF COSMETIC SPECIFICATION PS-45499-002.



2	F3
1	F3
SHT. REV.	

UPDATE NOTES EC NO: UCP2007-1205 DRAWN: P. DDER 2007/01/16 CHKD: ADERR 2007/01/18 APPR: FSM TH 2007/01/19 REV. DESCRIPTION	QUALITY SYMBOLS ▽=0 ▽=0	GENERAL TOLERANCES (UNLESS SPECIFIED) <table border="1"> <thead> <tr> <th></th> <th>mm</th> <th>INCH</th> </tr> </thead> <tbody> <tr> <td>4 PLACES</td> <td>± .10</td> <td>± .004</td> </tr> <tr> <td>3 PLACES</td> <td>± .15</td> <td>± .010</td> </tr> <tr> <td>2 PLACES</td> <td>± 0.25</td> <td>± .014</td> </tr> <tr> <td>1 PLACE</td> <td>± 0.35</td> <td>± .014</td> </tr> </tbody> </table> ANGULAR ±1/2°		mm	INCH	4 PLACES	± .10	± .004	3 PLACES	± .15	± .010	2 PLACES	± 0.25	± .014	1 PLACE	± 0.35	± .014	DIMENSION STYLE IN/MM	SCALE 4:1	DESIGN UNITS INCH	THIRD ANGLE PROJECTION
		mm	INCH																		
	4 PLACES	± .10	± .004																		
	3 PLACES	± .15	± .010																		
2 PLACES	± 0.25	± .014																			
1 PLACE	± 0.35	± .014																			
DRAWN BY ROBERTS	DATE 1991/10/17	CHECKED BY PATEL	DATE 1991/10/17	TITLE SPOX .156/(3.96) RECEPTACLE HOUSING																	
APPROVED BY LENZ	DATE 1991/10/17	MATERIAL NO. SEE CHART			MOLEX INCORPORATED																
DRAFT WHERE APPLICABLE MUST REMAIN WITHIN DIMENSIONS				SIZE C	DOCUMENT NO. SD-43061	SHEET NO. 1 OF 2															

HOUSING OPTION: A			HOUSING OPTION: A			HOUSING OPTION: A			HOUSING OPTION: B			HOUSING OPTION: B			HOUSING OPTION: B		
COLOR WHITE			COLOR BLACK			COLOR BLUE			COLOR WHITE			COLOR BLACK			COLOR BLUE		
NO. OF CKTS	MATERIAL NO	VOID LOC	NO. OF CKTS	MATERIAL NO	VOID LOC	NO. OF CKTS	MATERIAL NO	VOID LOC	NO. OF CKTS	MATERIAL NO	VOID LOC	NO. OF CKTS	MATERIAL NO	VOID LOC	NO. OF CKTS	MATERIAL NO	VOID LOC
2	4306 I-0002		2	4306 I-1002		2	4306 I-2002		2	4306 I-0013		2	4306 I-1013		2	4306 I-2050	
3	4306 I-0003		3	4306 I-1003		3	4306 I-2003		3	4306 I-0014		3	4306 I-1014		3	4306 I-2051	
4	4306 I-0004		4	4306 I-1004		4	4306 I-2004		4	4306 I-0015		4	4306 I-1015		4	4306 I-2052	
5	4306 I-0005		5	4306 I-1005		5	4306 I-2005		5	4306 I-0016		5	4306 I-1016		5	4306 I-2053	
6	4306 I-0006		6	4306 I-1006		6	4306 I-2006		6	4306 I-0017		6	4306 I-1017		6	4306 I-2054	
7	4306 I-0007		7	4306 I-1007		7	4306 I-2007		7	4306 I-0018		7	4306 I-1018		7	4306 I-2055	
8	4306 I-0008		8	4306 I-1008		8	4306 I-2008		8	4306 I-0019		8	4306 I-1019		8	4306 I-2056	
9	4306 I-0009		9	4306 I-1009		9	4306 I-2009		9	4306 I-0020		9	4306 I-1020		9	4306 I-2057	
10	4306 I-0010		10	4306 I-1010		10	4306 I-2010		10	4306 I-0021		10	4306 I-1021		10	4306 I-2058	
11	4306 I-0011		11	4306 I-1011		11	4306 I-2011		11	4306 I-0022		11	4306 I-1022		11	4306 I-2059	
12	4306 I-0012		12	4306 I-1012		12	4306 I-2012		12	4306 I-0023		12	4306 I-1023		12	4306 I-2060	
5	4306 I-0030	3	5	4306 I-1030	3	7	4306 I-2013	3,4,6									
7	4306 I-0031	4	7	4306 I-1031	4	7	4306 I-2014	3,6									
9	4306 I-0032	5	9	4306 I-1032	5												
8	4306 I-0033	7	8	4306 I-1033	7												
9	4306 I-0034	7	9	4306 I-1034	7												
5	4306 I-0035	4	5	4306 I-1035	4												
8	4306 I-0036	2															

E
D
C
B
A

SEE SHEET ONE EC NO: UCP2007-1205 DRAWN BY: JDDER 2007/01/16 CHKD: ADERR 2007/01/18 APPR: FSM TH 2007/01/19 REV:	QUALITY SYMBOLS = 0 = 0	GENERAL TOLERANCES (UNLESS SPECIFIED)		DIMENSION STYLE IN/MM	SCALE 4:1	DESIGN UNITS INCH	THIRD ANGLE PROJECTION
		mm INCH	DRAWN BY DATE ROBERTS 1991/11/06	TITLE SPOX .156/(3.96) RECEPTACLE HOUSING			
		4 PLACES ± --- ± --- 3 PLACES ± --- ± --- 2 PLACES ± --- ± --- 1 PLACE ± --- ± ---	CHECKED BY DATE PATEL 1991/11/06	MOLEX INCORPORATED			
		ANGULAR ±1/2°	APPROVED BY DATE LENZ 1991/11/06	MATERIAL NO. SD-43061	DOCUMENT NO.	SHEET NO. 2 OF 2	
DRAFT WHERE APPLICABLE MUST REMAIN WITHIN DIMENSIONS		SEE CHART		THIS DRAWING CONTAINS INFORMATION THAT IS PROPRIETARY TO MOLEX INCORPORATED AND SHOULD NOT BE USED WITHOUT WRITTEN PERMISSION			