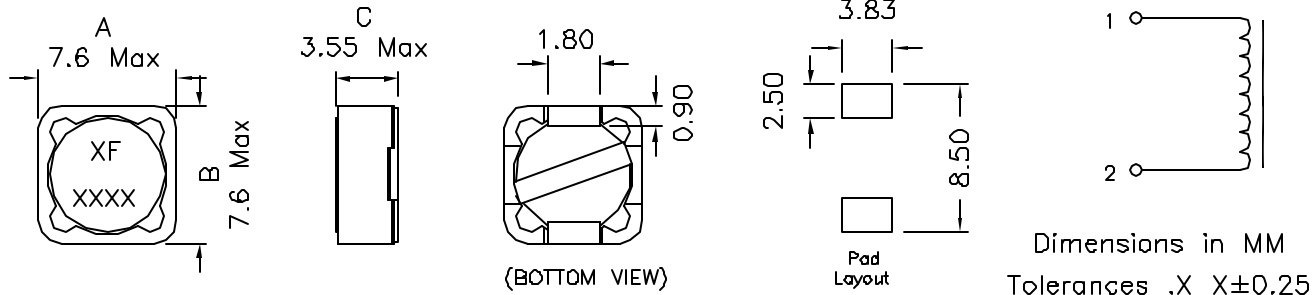


XFTPRH73 SMD POWER INDUCTORS

- High Inductance, High DC Current Capability
- True Surface Mount Design
- Tape & Reel Packaging Standard, 1000 Pcs per 13" Reel
- Custom designs available At No Extra Charge
- Economical Low Cost Solution For All Your Power Needs
- Magnetically Shielded

Mechanical Dimensions:



Part Number	OCL (1) (±20%uH)	I _{rms} (2) Amperes	I _{sat} (3) Amperes	DCR (4) (Typ Ohm)	Marking (except "M") tolerance
XFTPRH73-R33	0.306	9.08	14.4	0.0034	R33X
XFTPRH73-1R0	0.992	6.69	7.97	0.0063	1R0X
XFTPRH73-1R5	1.482	5.52	6.52	0.0093	1R5X
XFTPRH73-2R2	2.070	4.58	5.52	0.0135	2R2X
XFTPRH73-3R3	3.540	3.54	4.22	0.0226	3R3X
XFTPRH73-4R7	4.422	3.27	3.78	0.0264	4R7X
XFTPRH73-6R8	6.480	2.64	3.12	0.0405	6R8X
XFTPRH73-8R2	8.930	2.23	2.66	0.0571	8R2X
XFTPRH73-100	10.30	2.11	2.47	0.0634	100X
XFTPRH73-150	15.01	1.83	2.05	0.0844	150X
XFTPRH73-220	22.65	1.62	1.67	0.107	220X
XFTPRH73-330	34.41	1.31	1.35	0.166	330X
XFTPRH73-470	48.62	1.08	1.14	0.241	470X
XFTPRH73-680	68.91	0.89	0.96	0.358	680X
XFTPRH73-820	80.37	0.86	0.89	0.384	820X
XFTPRH73-101	101.4	0.73	0.79	0.527	101X
XFTPRH73-151	150.9	0.58	0.65	0.851	151X
XFTPRH73-221	223.3	0.52	0.53	1.05	221X
XFTPRH73-331	325.5	0.42	0.44	1.59	331X
XFTPRH73-471	465.8	0.35	0.37	2.36	471X
XFTPRH73-681	676.5	0.29	0.31	3.47	681X
XFTPRH73-821	821.7	0.27	0.28	3.93	821X
XFTPRH73-102	995.0	0.26	0.25	4.34	102X

(1). Open Circuit Inductance Test Parameters: 100KHz, 0.25V_{rms}, 0.0A_{dc}

(2). RMS current for an approximate ΔT of 40°C without core loss. It is recommended that the temperature of the part not exceed 125°C.

(3). Peak current for approximate 30% roll off at 20°C. (4)DCR limits @ 20°C.