

PLEASE CHECK WWW.MOLEX.COM FOR LATEST PART INFORMATION

Part Number: [0353650610](#)
Status: **Active**
Description: 6.20mm (.244") Pitch Fuel Pump Flange Header Assembly, Dual Row, Sealed, 6 Circuits

Documents:

[3D Model](#) [Product Specification PS-35365-001 \(PDF\)](#)
[Drawing \(PDF\)](#) [RoHS Certificate of Compliance \(PDF\)](#)

General

Product Family PCB Headers
 Series [35365](#)
 Application Wire-to-Board
 Product Name N/A

Physical

Breakaway No
 Circuits (Loaded) 6
 Circuits (maximum) 6
 Color - Resin Natural
 Durability (mating cycles max) 30
 First Mate / Last Break No
 Glow-Wire Compliant No
 Guide to Mating Part No
 Keying to Mating Part None
 Lock to Mating Part Yes
 Material - Metal Brass
 Material - Plating Mating Tin
 Material - Plating Termination Tin
 Material - Resin Polyester
 Number of Rows 2
 Orientation Right Angle
 PCB Retention None
 Packaging Type Bag
 Pitch - Mating Interface (in) 0.244 In
 Pitch - Mating Interface (mm) 6.20 mm
 Plating min: Mating (µin) 32.00
 Plating min: Mating (µm) 0.800
 Plating min: Termination (µin) 32.00
 Plating min: Termination (µm) 0.80
 Polarized to PCB No
 Shrouded Partial
 Stackable No
 Surface Mount Compatible (SMC) No
 Temperature Range - Operating -40°C to +120°C
 Termination Interface: Style Through Hole

Electrical

Current - Maximum per Contact 10A
 Voltage - Maximum 5V

Material Info

Reference - Drawing Numbers

Product Specification PS-35365-001
 Sales Drawing SD-35365-007

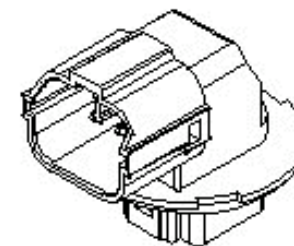


image - Reference only

Series

EU RoHS

ELV and RoHS Compliant
REACH SVHC
 Not Reviewed
Halogen-Free Status
 Not Reviewed

China RoHS



Need more information on product environmental compliance?

Email productcompliance@molex.com
 For a multiple part number RoHS Certificate of Compliance, [click here](#)

Please visit the [Contact Us](#) section for any non-product compliance questions.

Search Parts in this Series

[35365Series](#)

Mates With

[35515](#) Tab Housing for Fuel Pump Flange

Use With

[35407](#) Terminal

This document was generated on 04/14/2010

PLEASE CHECK WWW.MOLEX.COM FOR LATEST PART INFORMATION

DWG. NO. SD-35365-007

SIMILAR ITEM

PROJECT NO. 35365-0610

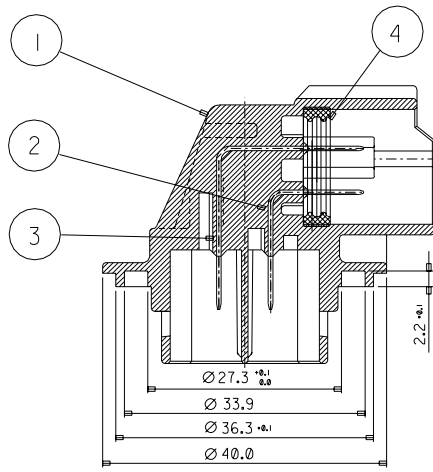
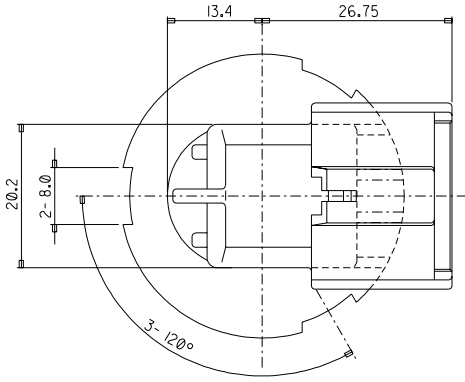
F

D

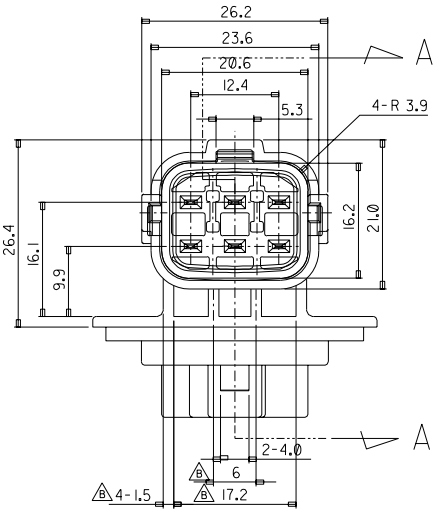
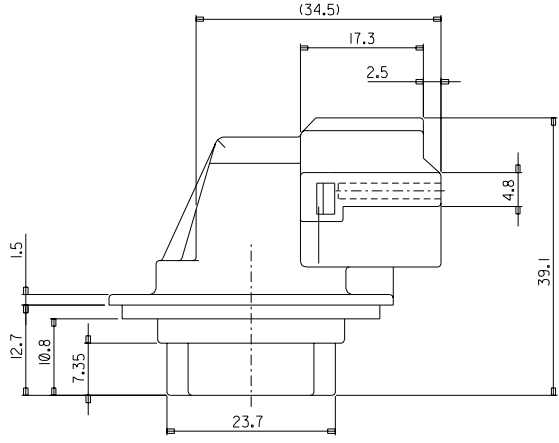
C

B

DO NOT SCALE DRAWING DIMENSION IN METRIC



SECTION A-A



NO	PART NAME	ENG. NO.	Q'TY	MATERIAL /FINISH
1	6P MALE HEADER ASS'Y	35365-0690	1	POLYESTR(PBT),BLK UL94HB
2	MALE TERMINAL(S)	35678-1702	3	BRASS,TIN PLATING
3	MALE TERMINAL(L)	35678-2302	3	BRASS,TIN PLATING
4	INNER SEAL	35903-0016	1	SILICONE-BROWN

NOTES

- MUST BE FREE OF FLASH ,SINK AND IMPERFECTIONS THAT AFFECT FUNCTION.
- THE DRAFT SHALL BE WITHIN TOLERANCE.
- IN AREAS MARKED FOR FINISHING THE DIE SHALL HAVE FLAT SURFACE.
- SEALING PARTS SHALL NOT LEAK MORE THAN 0.5kgf/cm² PRESSURE APPLIDE.

REVISED EC NO. KOP2004-0054 DRWN: S.M.KIM 03/09/29 CHK: B.C.YOON 03/09/29 APPR: C.W.LEE	QUALITY SYMBOLS MAJOR CRITICAL	GENERAL TOLERANCES: (UNLESS SPECIFIED)		SCALE 2:1	DESIGN UNITS <input checked="" type="checkbox"/> mm <input type="checkbox"/> INCH	DIMENSIONS: <input type="checkbox"/> mm <input checked="" type="checkbox"/> mm <input type="checkbox"/> mm <input type="checkbox"/> mm		SHT	REV
		4 PLACES 3 PLACES 2 PLACES 1 PLACE	±0. ±0. ±0.15 ±0.25	± ± ± ±	INCH INCH INCH INCH	DRAWN BY & DATE Y.SIK,KIM 98/04/12	THIRD ANGLE PROJECTION <input checked="" type="checkbox"/> mm <input type="checkbox"/> mm <input type="checkbox"/> mm <input type="checkbox"/> mm		1
D	DESCRIPTION	ANGULAR: ± 1 °		CHECKED BY & DATE B.K.CHOI 98/04/13		TITLE: FUEL PUMP FLANGE-6P HEADER ASS'Y		SHEET NO. 1 OF 1	
		DRAFT WHERE APPLICABLE MUST REMAIN WITHIN DIMENSIONS		APPROVED BY & DATE C.W.LEE 98/04/13		MOLEX INCORPORATED		C	
		CAD FILENAME sd35365.dgn		MATERIAL NO. 35365-0610		DRAWING NO. SD-35365-007		SIZE C	
				THIS DRAWING CONTAINS INFORMATION THAT IS PROPRIETARY TO MOLEX INCORPORATED AND SHOULD NOT BE USED WITHOUT WRITTEN PERMISSION.				MX-A2	