

**PLEASE CHECK WWW.MOLEX.COM FOR LATEST PART INFORMATION**

**Part Number:** [0685080811](#)  
**Status:** **Active**  
**Description:** 1.02mm (.040") Tab, Wire-To-Wire Housing, Female, 8 Circuits, with TPA™

**Documents:**

[3D Model](#) [Product Specification PS-104000-001 \(PDF\)](#)  
[Drawing \(PDF\)](#) [RoHS Certificate of Compliance \(PDF\)](#)

**General**

Product Family Crimp Housings  
 Series [68508](#)  
 Product Name N/A

**Physical**

Circuits (maximum) 8  
 Color - Resin Black, Yellow  
 Gender Female  
 Glow-Wire Compliant No  
 Lock to Mating Part Yes  
 Material - Resin Polyester  
 Number of Rows 2  
 Packaging Type Bag  
 Panel Mount Yes  
 Pitch - Mating Interface (in) 0.098 In  
 Pitch - Mating Interface (mm) 2.50 mm  
 Polarized to Mating Part Yes  
 Stackable No  
 Temperature Range - Operating -40°C to +80°C

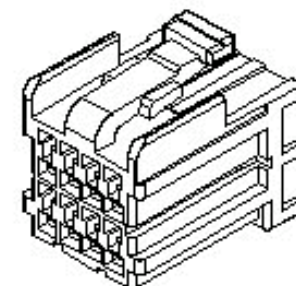
**Electrical**

Current - Maximum per Contact 5A

**Material Info**

**Reference - Drawing Numbers**

Product Specification [PS-104000-001](#)  
 Sales Drawing [SD-68508-002](#)



*image - Reference only*

*Series*

**EU RoHS**

**ELV and RoHS  
Compliant**  
**REACH SVHC**  
 Not Reviewed  
**Halogen-Free  
Status**

**China RoHS**



**Need more information on product  
environmental compliance?**

Email [productcompliance@molex.com](mailto:productcompliance@molex.com)  
 For a multiple part number RoHS Certificate of Compliance, [click here](#)

Please visit the [Contact Us](#) section for any non-product compliance questions.

**Search Parts in this Series**

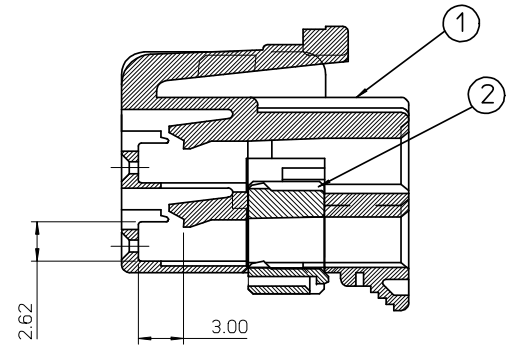
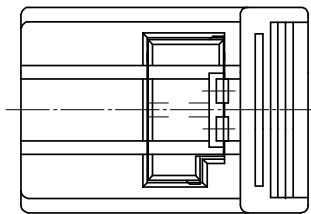
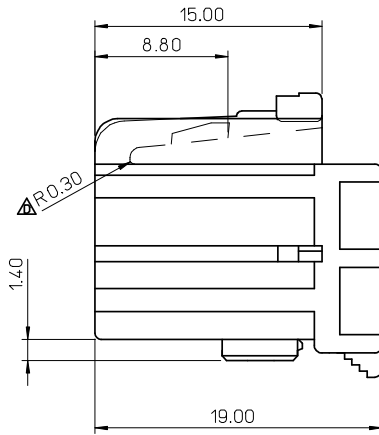
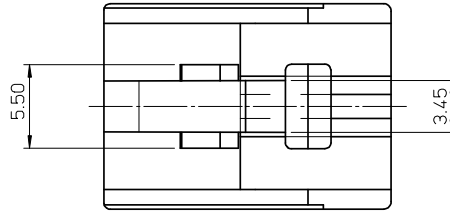
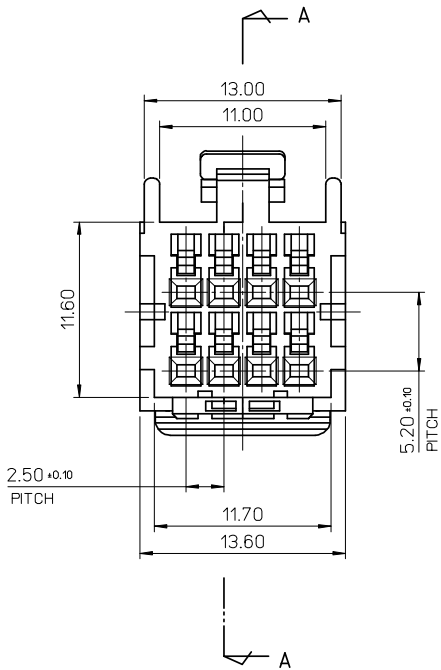
[68508Series](#)

**Mates With**

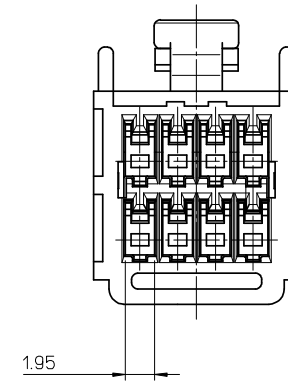
[68507-0811](#) , [68507-0821](#)

**Use With**

[50660-9001](#) , [68510-0883](#) , [50654-1001](#)



SECTION A-A'



NOTE

- 1. MATERIAL : SEE PART LIST
- 2. PRODUCT SPECIFICATION : PS-68145-002

<PART LIST>

NO	PART NAME	MATERIAL
①	.040 FEMALE HSG 8P	POLYESTER(PBT)
②	.040 FEMALE TPA 8P	POLYESTER(PBT)

<TABLE 1>

685080811	68508-0811	BLACK
685080815	68508-0815	GRAY
MATERIAL NO.	ORDER NO.	COLOR

REVISED E.C. NO: KOR2009-0009 2008/08/06 D DRWNEKIM 2008/08/12 CHKD:BCYOON 2008/08/12 APPR:YUNSIKKIM 2008/08/12 REV DESCRIPTION	QUALITY SYMBOLS	GENERAL TOLERANCES (UNLESS SPECIFIED)	DIMENSION STYLE	SCALE	DESIGN UNITS	THIRD ANGLE PROJECTION
	▽=0 ▽=0	mm INCH 4 PLACES ± --- ± --- 3 PLACES ± --- ± --- 2 PLACES ± 0.2 ± --- 1 PLACE ± 0.3 ± --- ANGULAR ± 1 °	MM ONLY	4:1	METRIC	
			DRAFT WHERE APPLICABLE MUST REMAIN WITHIN DIMENSIONS	DRAWN BY DATE HCRHO 2001/08/14 CHECKED BY DATE BKCHOI 2001/08/14 APPROVED BY DATE CWLEE 2001/08/14	TITLE .040 W/W FEMALE HSG ASS'Y 8P	
			SEE TABLE 1	MATERIAL NO. DOCUMENT NO. SD-68508-002		SHEET NO. 1 OF 1

MOLEX INCORPORATED  
 THIS DRAWING CONTAINS INFORMATION THAT IS PROPRIETARY TO MOLEX INCORPORATED AND SHOULD NOT BE USED WITHOUT WRITTEN PERMISSION