

# Customer Information Sheet

DRAWING No.: S1761-XXR

SHEET 2 OF 2

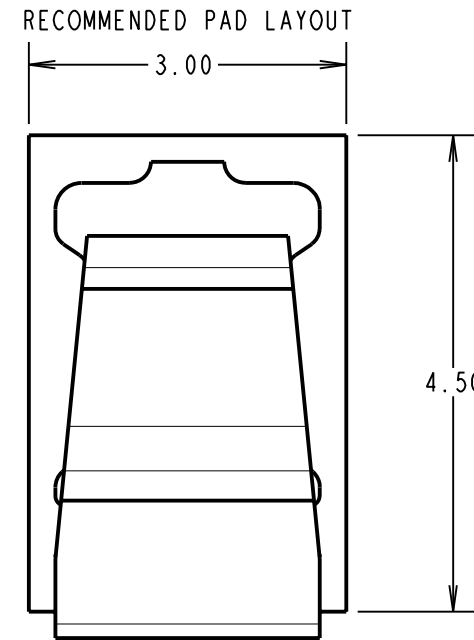
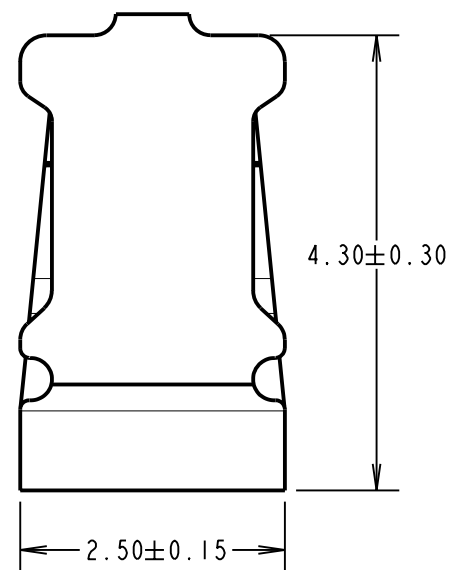
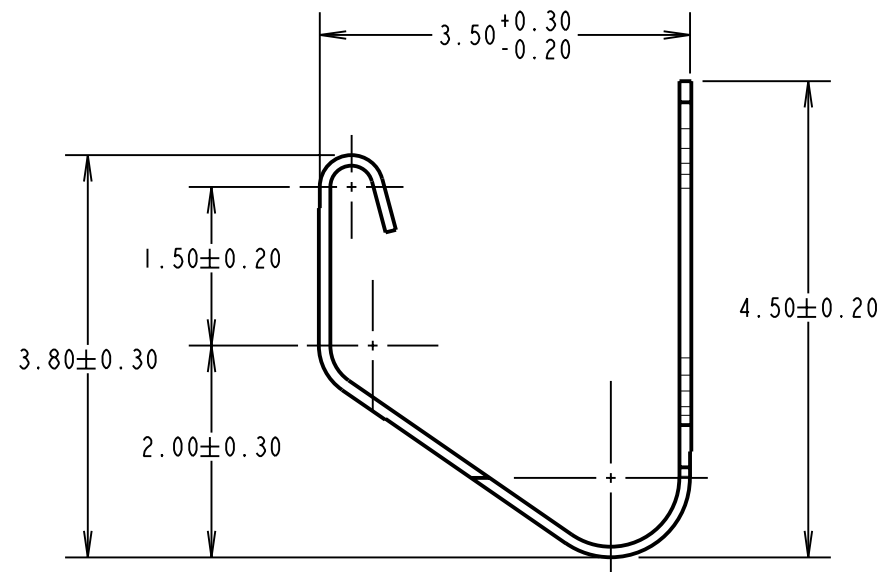
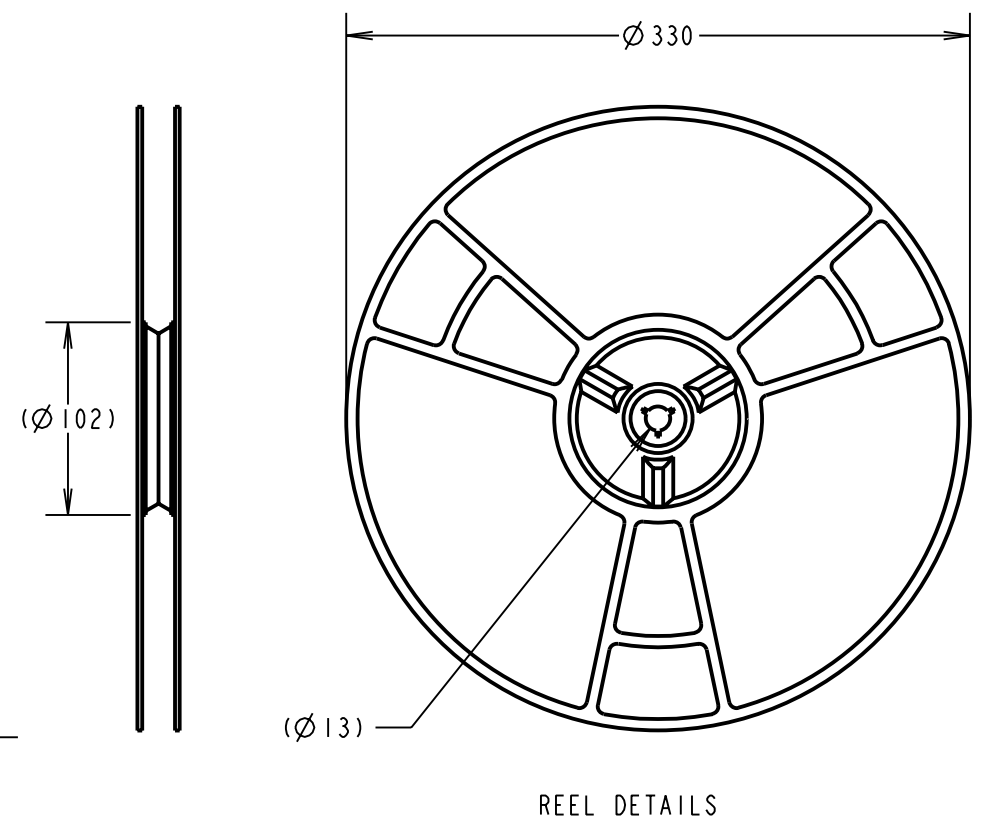
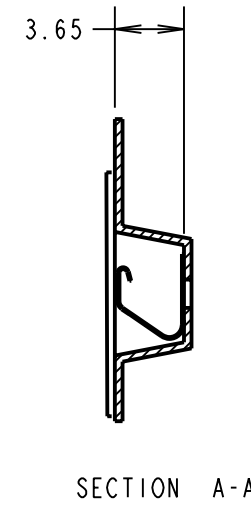
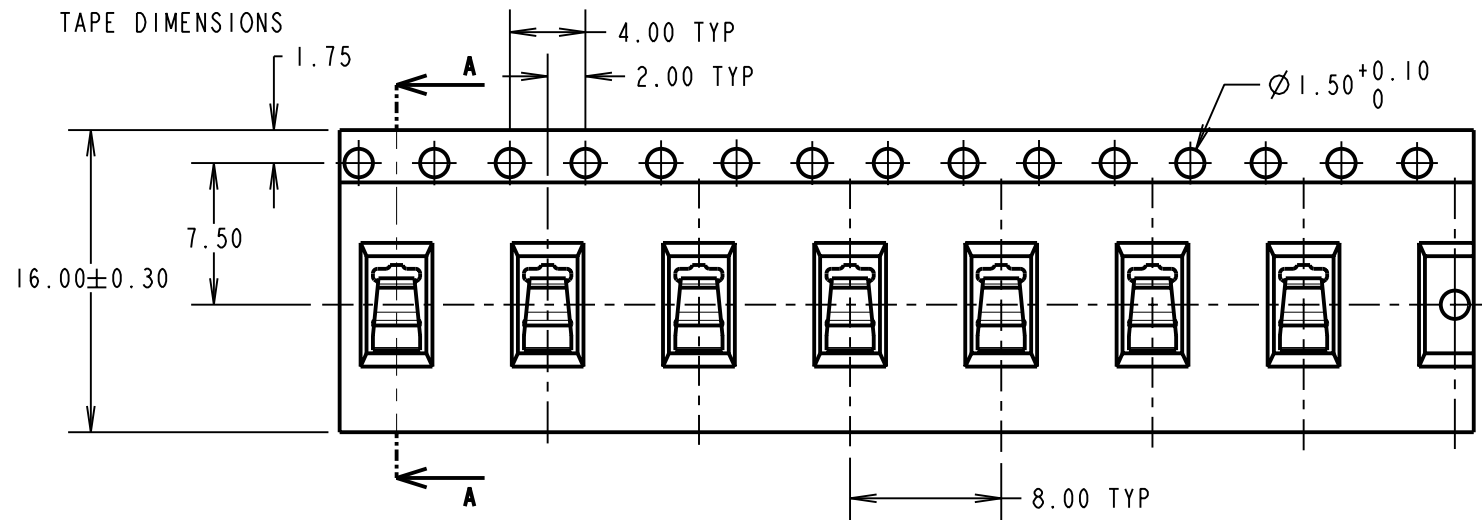
IF IN DOUBT - ASK

©

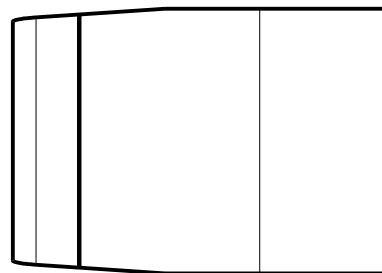
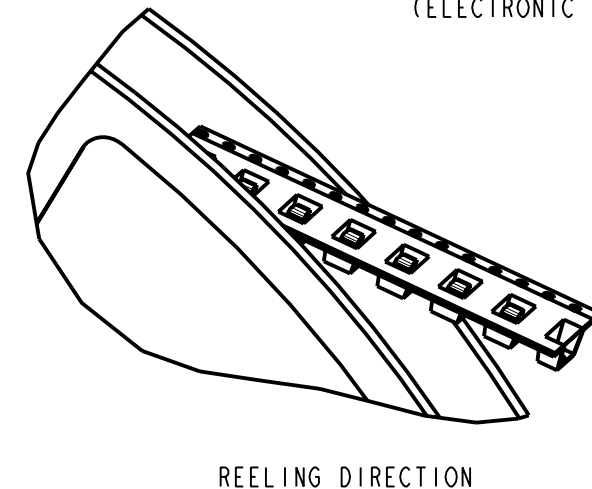
NOT TO SCALE

THIRD ANGLE PROJECTION

ALL DIMENSIONS IN mm



- NOTES:
1. QUANTITY PER REEL = 2000
  2. THIS PRODUCT IS TAPED AND REELED IN ACCORDANCE WITH EIA-481 (ELECTRONIC INDUSTRIES ASSOCIATION)



SINGLE COMPONENT DIMENSIONS

ORDER CODE: **S1761-XXR**

FINISH \_\_\_\_\_  
 42 = GOLD FLASH ON CONTACT AREA,  
 2.5µ 100% TIN ON FOOT AREA,  
 0.76-1.27µ ALL OVER NICKEL  
 46 = 0.76-1.27µ 100% TIN OVER NICKEL

COMPONENT SPECIFICATION:  
 MATERIAL = TITANIUM COPPER  
 RECOMMENDED WORKING HEIGHT = 2.50mm / MIN FORCE = 1.5N  
 MINIMUM WORKING HEIGHT = 1.75mm / MAX FORCE = 8.5N  
 MAXIMUM PERMANENT SET = 0.20mm

**HARWIN**

HARWIN USA TEL: 603 893 5376 FAX: 603 893 5396 mis@harwin.com	HARWIN Europe (UK) TEL: 023 9231 4545 FAX: 023 9231 4590 mis@harwin.co.uk	HARWIN Asia TEL: +65 6 779 4909 FAX: +65 6 779 3868 mis@harwin.com.sg
--	--	--

THIS DRAWING AND ANY INFORMATION OR DESCRIPTIVE MATTER SET OUT HEREON ARE CONFIDENTIAL AND COPYRIGHT PROPERTY OF THE HARWIN GROUP AND MUST NOT BE DISCLOSED, LOANED, COPIED OR USED FOR MANUFACTURING, TENDERING OR FOR ANY OTHER PURPOSE WITHOUT THEIR WRITTEN PERMISSION.

TOLERANCES  
 X. = ±1mm  
 X.X = ±0.25mm  
 X.XX = ±0.10mm  
 X.XXX = ±0.01mm  
 ANGLES = ±5°  
 UNLESS STATED

MATERIAL:  
 SEE ABOVE  
 FINISH: SEE ABOVE  
 S/AREA: mm<sup>2</sup>

TITLE:  
**S1761-XX EMI SHIELD FINGER IN TAPE AND REEL**  
 DRAWING NUMBER:  
**S1761-XXR**  
 SHT 2 OF 2

SM	5	08.06.10	10822
NAME	ISS.	DATE	C/NOTE
APPROVED: S. MCCULLAGH			
CHECKED: R. ADDE			
DRAWN: N. CODLING			
CUSTOMER REF.:			
ASSEMBLY DRG:			