

PLEASE CHECK WWW.MOLEX.COM FOR LATEST PART INFORMATION

Part Number: [0850560012](#)
Status: **Active**
Overview: [din_41612](#)
Description: 2.54mm (.100") Pitch DIN 41612/IEC 603-2 Mixed Layout Connector, Female Style M Inverse, 24 Circuits, Lead free

Documents:

[3D Model](#) [RoHS Certificate of Compliance \(PDF\)](#)
[Drawing \(PDF\)](#)

Agency Certification

CSA LR19980
 UL E29179

General

Product Family Backplane Connectors
 Series [85056](#)
 Application Daughtercard
 Component Type PCB Receptacle
 Overview [din_41612](#)
 Product Name IEC 603-2/DIN 41612
 Style M

Physical

Circuits (Loaded) 24
 Circuits (maximum) 32
 Circuits Detail Standard Contacts at A:a13-a20; B:b13-b20; C:c13-c20
 Durability (mating cycles max) 400
 First Mate / Last Break No
 Flammability 94V-0
 Guide to Mating Part No
 Keying to Mating Part Yes
 Material - Plating Mating Gold
 Material - Plating Termination Tin
 Number of Columns 8
 Number of Pairs Open Pin Field
 Number of Rows 3
 Orientation Right Angle
 PC Tail Length (in) 0.133 In
 PC Tail Length (mm) 3.40 mm
 PCB Locator No
 PCB Retention Yes
 PCB Thickness Recommended (in) 0.063 In, 0.126 In
 PCB Thickness Recommended (mm) 1.60 mm, 3.20 mm
 Packaging Type Tray
 Pitch - Mating Interface (in) 0.100 In
 Pitch - Mating Interface (mm) 2.54 mm
 Pitch - Term. Interface (in) 0.100 In
 Pitch - Term. Interface (mm) 2.54 mm
 Plating min: Mating (µin) 24
 Plating min: Mating (µm) 0.60
 Polarized to PCB Yes
 Stackable No
 Surface Mount Compatible (SMC) No
 Temperature Range - Operating -55°C to +125°C
 Termination Interface: Style Through Hole

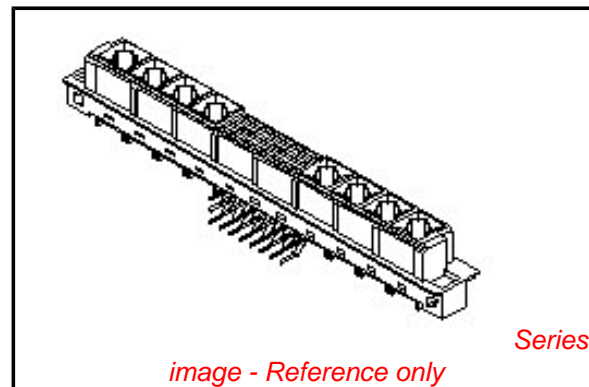


image - Reference only

EU RoHS **China RoHS**

Compliance Status

Not Reviewed

REACH SVHC

Not Reviewed

Halogen-Free

Status

Not Reviewed

Need more information on product environmental compliance?

Email productcompliance@molex.com
 For a multiple part number RoHS Certificate of Compliance, [click here](#)

Please visit the [Contact Us](#) section for any non-product compliance questions.

Search Parts in this Series

[85056Series](#)

Mates With

DIN 41612/EIC 603-2 Mixed Layout Connectors [85009](#) , [85017](#)

Use With

[85022](#)

Electrical

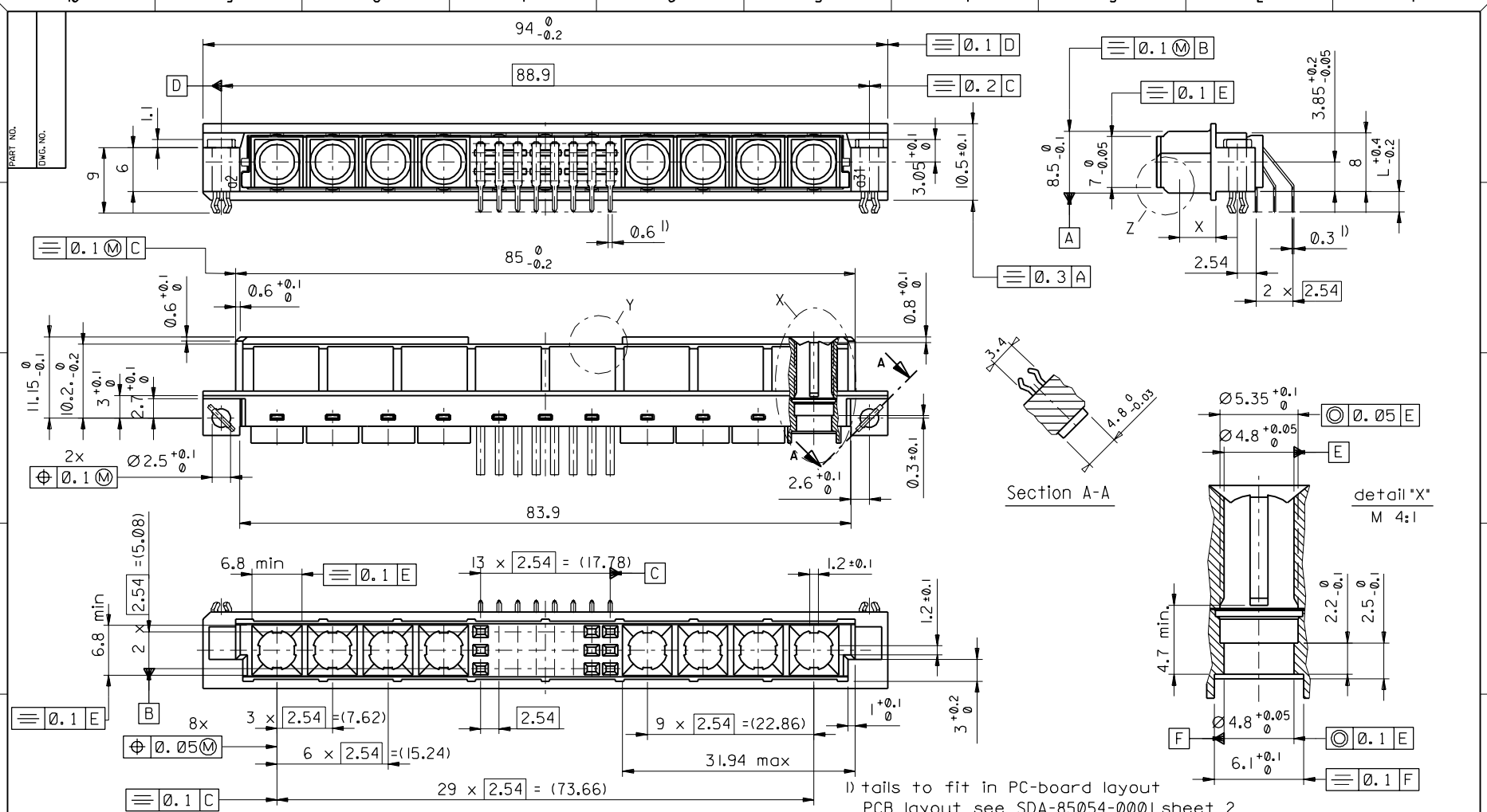
Current - Maximum per Contact	2.5A
Data Rate	622.0 Mbps
Real Signals (per 25mm)	30
Voltage - Maximum	250V AC (RMS)

Material Info**Reference - Drawing Numbers**

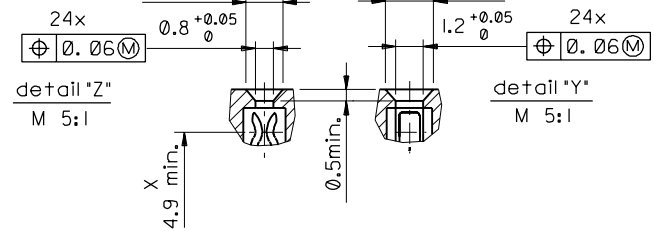
Sales Drawing	SD-85056-0004, SD-85056-0012
---------------	------------------------------

This document was generated on 05/17/2010

PLEASE CHECK WWW.MOLEX.COM FOR LATEST PART INFORMATION



l) tails to fit in PC-board layout
 PCB layout see SDA-85054-0001 sheet 2



FIRST ANGLE PROJECTION <small>UNLESS OTHERWISE SPECIFIED TOLERANCES: ANGULAR ±2°</small> <small>INCH METRIC</small> 3 PLACE ± ± 2 PLACE ± ± 1 PLACE ± ± <small>DRAFT WHERE APPLICABLE MUST REMAIN WITHIN DIMENSIONS</small> DESIGN DIMENSION <input checked="" type="checkbox"/> MM <input type="checkbox"/> IN. EQUIVALENT DIMENSION <input type="checkbox"/> MM <input type="checkbox"/> IN. <small>IF TWO DIMENSIONS ARE SHOWN THE UPPER IS THE DESIGN DIMENSION, LOWER IS SECONDARY</small>	REVISIONS <small>FOR PREVIOUS REVISIONS SEE MRI LIST</small> LTR ECN MG1998-2586 L+0.2 In +0.4-0.2, Tex+1) 97-09-18 KN	DRWG BY KN	SIGN 	CAD/CAM PROJECT NAME 85056000 841	THIS DRAWING CONTAINS INFORMATION THAT IS PROPRIETARY TO MOLEX INC. & SHOULD NOT BE USED WITHOUT WRITTEN PERMISSION	SH. REV.
		CHK'D BY Ca	SIGN 	TITLE 24 pol. Federleiste 24 pos. female connector DIN 41612, style M inverted		
		APP'D BY JB	SIGN 	MOLEX EUROPE SHEET NO. DATE 1 of 1 97/04/23		
		SCALE 2:1	PART NO. 	DWG NO. SD-85056-0004	SIZE B	

VIEW ON MATING SIDE

⋮																								
					C	C	C	C	C	C	C	C												
					B	B	B	B	B	B	B	B												
					A	A	A	A	A	A	A	A												

Σ Π Θ ϑ ϒ ζ η θ ι κ λ μ ν ξ ο π ρ σ τ υ φ χ ψ ω ∞ ∠ ⊕ ⊖ ⊗ ⊘

- A = 8 CONTACTS L-3,4
 B = 8 CONTACTS L-3,4
 C = 8 CONTACTS L-3,4
-
- S = 24 TOTAL NUMBER OF CONTACTS

Marking	Standard
Performance level	G2/0 = Contact area level2 / Termination tin
Flux proof	no
Fixing clip	no
Dimensions	SD-85056-0004 sht.1
TechnicalData	PS-85052-0001

C	G2/0	c13-20
B	G2/0	b13-20
A	G2/0	a13-20
Contact symbol	Perform. level	Contact position number

ECN 2478 first release	REVISIONS	FOR PREVIOUS REVISIONS SEE MRI LIST	
LTR	IF TWO DIMENSIONS ARE SHOWN, THE UPPER IS THE DESIGN DIMENSION, LOWER IS SECONDARY		
DESIGN DIMENSION	<input type="checkbox"/> MM <input type="checkbox"/> IN.	EQUIVALENT DIMENSION	<input type="checkbox"/> MM <input type="checkbox"/> IN.
DRAFT WHERE APPLICABLE MUST REMAIN WITHIN DIMENSIONS			
1 PLACE ± . . .	±	2 PLACE ± . . .	±
3 PLACE ± . . .	±		
UNLESS OTHERWISE SPECIFIED TOLERANCES: ANGULAR ±2° METRIC			
APP'D BY	CHK'D BY	DRWG BY	SIGN
JB	Ca	KN	KN
SCALE			
TITLE			
24 pos. female connector acc. DIN 41612, style M invert. contacts arrangement			
CAD/CAM PROJECT NAME s8505600 s11		THIS DRAWING CONTAINS INFORMATION THAT IS PROPRIETARY TO MOLEX INC. & SHOULD NOT BE USED WITHOUT WRITTEN PERMISSION	
REVISE ONLY ON CAD SYSTEM		SH. REV.	REV.
PART NO. 85056-0012		DWG NO.	SD-85056-0012
MOLEX EUROPE		SHEET NO.	DATE
		1 OF 1	97/05/21
		SIZE	A