

PLEASE CHECK WWW.MOLEX.COM FOR LATEST PART INFORMATION

Part Number: [0850830300](#)
Status: **Active**
Description: 4.00mm (0.157") SRC Housing, Male, 84 Pin Power, Nylon, Black

Documents:

[Drawing \(PDF\)](#) [RoHS Certificate of Compliance \(PDF\)](#)
[Product Specification PS-85083-001 \(PDF\)](#)

General

Product Family	Crimp Housings
Series	85083
Comments	Polarized to mating part
Product Name	SRC

Physical

Circuits (maximum)	84
Color - Resin	Black
Gender	Male
Glow-Wire Compliant	No
Keying to Mating Part	None
Lock to Mating Part	Yes
Material - Resin	Nylon
Number of Rows	14
Packaging Type	Bag
Panel Mount	No
Pitch - Mating Interface (in)	0.012 In
Pitch - Mating Interface (mm)	0.30 mm
Polarized to Mating Part	Yes
Stackable	No
Temperature Range - Operating	-40°C to +125°C

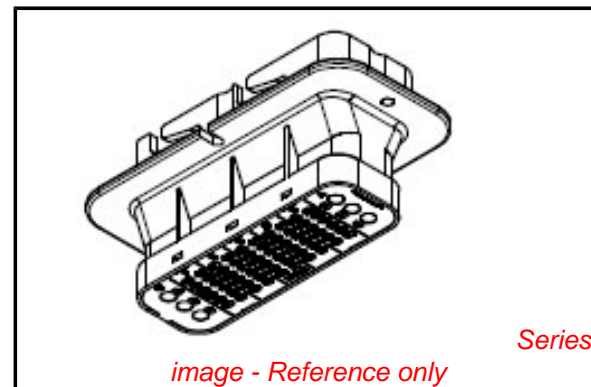
Electrical

Current - Maximum per Contact	40A
-------------------------------	-----

Material Info

Reference - Drawing Numbers

Product Specification	PS-85083-001
Sales Drawing	SD-85083-300



EU RoHS

**ELV and RoHS
Compliant**
**REACH SVHC
Not Reviewed**
**Halogen-Free
Status
Not Reviewed**

China RoHS



**Need more information on product
environmental compliance?**

Email productcompliance@molex.com
 For a multiple part number RoHS Certificate of
 Compliance, [click here](#)

Please visit the [Contact Us](#) section for any
 non-product compliance questions.

Search Parts in this Series

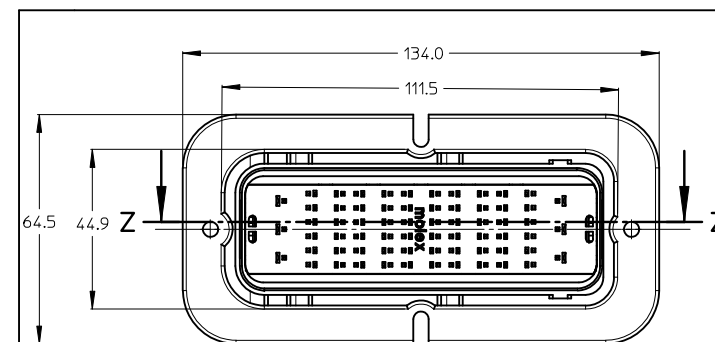
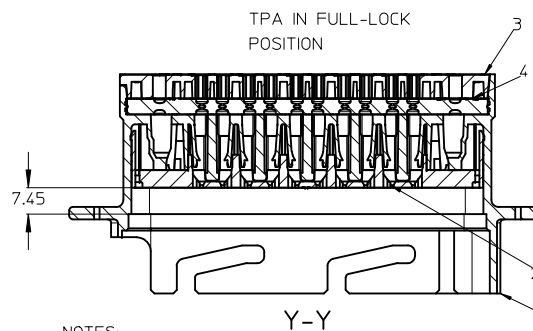
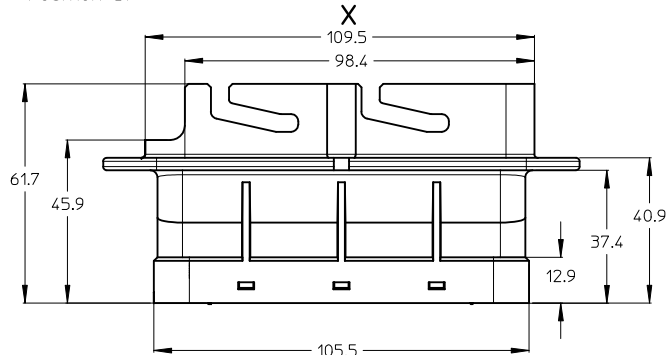
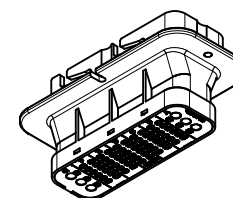
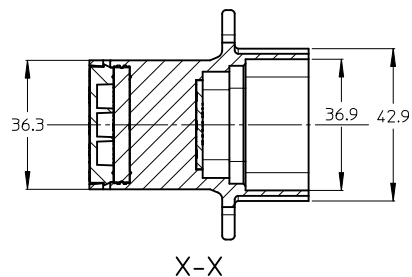
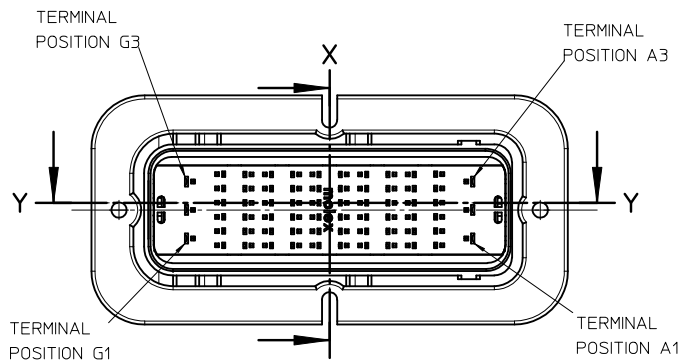
85083Series

Mates With

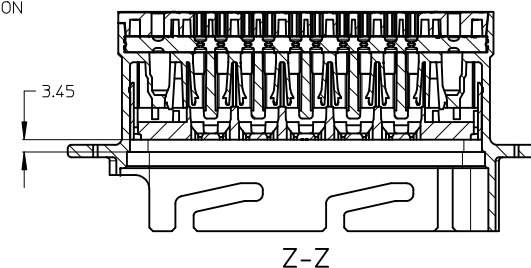
85070 SRC Heavy Duty Plug Housing

Use With

33000 Male Terminals, Tin, AWG 14-22.
 19431 Male Terminal, Tin, AWG 8-12

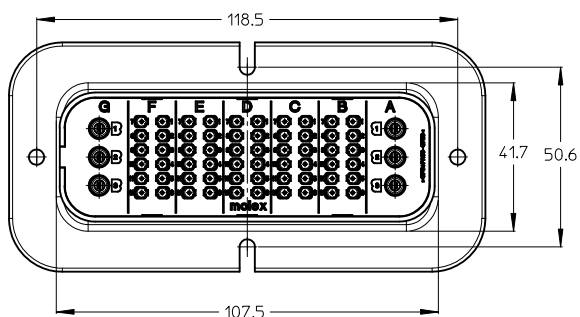


TPA IN UNLOCK POSITION



NOTES:

1. SEE DRAWING SD-85084-700 FOR MATING PART
2. SEE DRAWING SD-33000-001 FOR TERMINALS TO BE USED IN CAVITIES B, C, D, E, F,
3. SEE DRAWING SD-19431-002 FOR TERMINALS TO BE USED IN CAVITIES A AND G (POWER CAVITIES)
4. OUTER-DIAMETER OF CONDUCTOR INSULATOR MUST LIE IN THE RANGE 1.7mm TO 2.69mm, FOR CAVITIES B, C, D, E, F,
5. OUTER-DIAMETER OF CONDUCTOR INSULATOR MUST LIE IN THE RANGE 3.9mm TO 4.85mm, FOR CAVITIES A AND G (POWER CAVITIES)
6. MATERIAL COMPLIANT TO RoHS DIRECTIVE 2002/95/EC
7. SHALL CONFORM TO PRODUCT SPECIFICATION PS-85083-001



NO.	PART NAME	QTY	MATERIAL	COLOR
4	MALE BACK SEAL	1	LSR 30 Durom, A	TRANSPARENT
3	MALE REAR COVER	1	SPS/PA66 GF20	BLACK
2	MALE FRONT COVER (TPA)	1	SPS/PA66 GF20	BLACK
1	MALE HOUSING	1	SPS/PA66 GF20	BLACK

ENTER DESCRIPTION	QUALITY SYMBOLS	GENERAL TOLERANCES (UNLESS SPECIFIED)		DIMENSION STYLE		SCALE	DESIGN UNITS	FIRST ANGLE PROJECTION
		mm	INCH	MM ONLY	1:1	METRIC		
EC NO: M62010-0037 DRAWN: APOHL 2009/12/04 CHKD: RSILLER 2009/12/04 APPR: AVOGT 2009/12/07	▼=0 ▽=0	4 PLACES ± .05	± .005	DRAWN BY	DATE	TITLE	SRC 60+6 CONTACT, MALE ASSEMBLY	1 OF 1
		3 PLACES ± .05	± .005	TVOGT	2009/03/26			
2	DESCRIPTION	2 PLACES ± 0.10	± .005	CHECKED BY	DATE	MATERIAL NO.	MOLEX INCORPORATED	SHEET NO.
		1 PLACE ± 0.10	± .005	RSILLER	2009/03/30			
DRAFT WHERE APPLICABLE MUST REMAIN WITHIN DIMENSIONS		ANGULAR ± .5°		APPROVED BY	DATE	DOCUMENT NO.	SD-85083-300	
				AVOGT	2009/03/31			
				85083-0300				
				THIS DRAWING CONTAINS INFORMATION THAT IS PROPRIETARY TO MOLEX INCORPORATED AND SHOULD NOT BE USED WITHOUT WRITTEN PERMISSION				