

**PLEASE CHECK WWW.MOLEX.COM FOR LATEST PART INFORMATION**

**Part Number:** [0887683620](#)  
**Status:** **Active**  
**Overview:** high definition multimedia interface hdmi  
**Description:** HDMI\*-to-DVI-Digital Cable Assembly, 30 AWG, 3.0m (9.84' ) Length

**Documents:**

[Drawing \(PDF\)](#) [RoHS Certificate of Compliance \(PDF\)](#)  
[Product Specification PS-88768-001 \(PDF\)](#)

**General**

Product Family	Cable Assemblies
Series	88768
Connector to Connector	HDMI*-to-DVI-Digital
Overview	<u>high definition multimedia interface hdmi</u>
Product Name	HDMI*

**Physical**

Cable Length	3.0m (9.84' )
Circuits (Loaded)	19
Color - Resin	Black, Natural
Gender	Male-Male
Lock to Mating Part	Yes
Material - Metal	High Performance Alloy (HPA), Phosphor Bronze
Material - Plating Mating	Gold
Material - Plating Termination	Tin
Material - Resin	High Temperature Thermoplastic, Low Density Polyethylene, Polyester
Packaging Type	Bag
Pitch - Mating Interface (in)	0.039 In
Pitch - Mating Interface (mm)	1.00 mm
Plating min: Mating (µin)	10, 32
Plating min: Mating (µm)	0.25, 0.8
Plating min: Termination (µin)	150, 50.8
Plating min: Termination (µm)	1.27, 3.80
Single Ended	No
Termination Interface: Style	N/A, Through Hole
Wire Insulation Diameter	N/A
Wire Size AWG	30
Wire/Cable Type	Round

**Electrical**

Current - Maximum per Contact	0.5A
Impedance	100 ohms
Shielded	Yes
Voltage - Maximum	40V

**Material Info**

**Reference - Drawing Numbers**

Product Specification	PS-88768-001
Sales Drawing	SD-88768-3620, SD887683620

\*High Definition Multimedia Interface and HDMI are trademarks of HDMI Licensing, LLC.

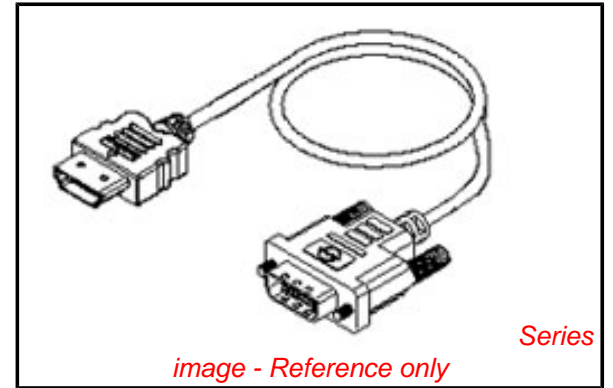


image - Reference only

**EU RoHS**

**RoHS Compliant by Exemption**

**REACH SVHC**

Not Reviewed

**Halogen-Free**

**Status**

**Not Reviewed**

**Need more information on product environmental compliance?**

Email [productcompliance@molex.com](mailto:productcompliance@molex.com)  
 For a multiple part number RoHS Certificate of Compliance, [click here](#)

Please visit the [Contact Us](#) section for any non-product compliance questions.

**China RoHS**



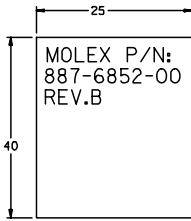
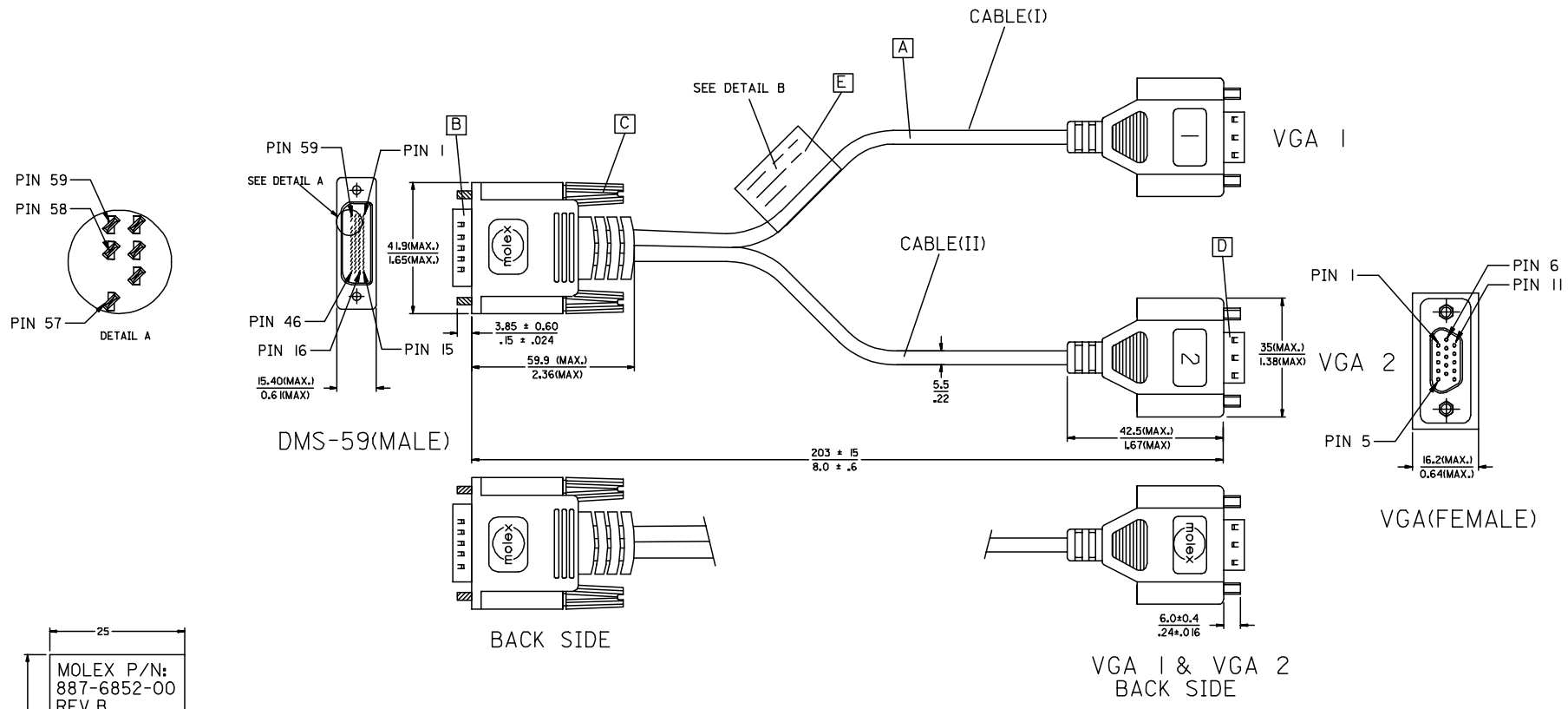
Pb

**Search Parts in this Series**

88768Series

7 6 5 4 3 2 1

E  
D  
C  
B  
A



ENTER DESCRIPTION EC NO: DG2006-0186 DRWN:PDAI CHKD: APPR:TKAN	2006/03/09 2006/03/09 2006/03/10	QUALITY SYMBOLS ▽=0 ◻=0	GENERAL TOLERANCES (UNLESS SPECIFIED)		DIMENSION STYLE MM/IN		SCALE ---	DESIGN UNITS METRIC	THIRD ANGLE PROJECTION	
			4 PLACES ± --- ± --- 3 PLACES ± --- ± --- 2 PLACES ± --- ± --- 1 PLACE ± --- ± ---	mm      INCH	DRAWN BY PDAI	DATE 2006/03/07	TITLE DMS59(M) TO TWO VGA(F) ADAPTER CABLE			
			ANGULAR ± ---°		CHECKED BY ZXDENG	DATE 2006/03/07	MOLEX MOLEX INCORPORATED			
			DRAFT WHERE APPLICABLE MUST REMAIN WITHIN DIMENSIONS		APPROVED BY BORON	DATE 2006/03/07	MATERIAL NO. 887685200	DOCUMENT NO. SD-88744-096	SHEET NO. 1 OF 2	

6 5 4 3 2 1

WIRING DIAGRAM:

SHIELD	SHIELD	GROUND
PIN 59	PIN 7	GROUND(GREEN)
PIN 58	PIN 2	RGB1_GREEN
PIN 57	PIN 5	GROUND(ANALOG)
PIN 56	PIN 13	RGB1_HSYNC
PIN 55	PIN 14	RGB1_VSYNC
PIN 54	PIN 10	GROUND(SYNCS)
PIN 7	PIN 12	RGB1_SDA(DDC DATA)
PIN 6	PIN 15	RGB1_SCL(DDC CLOCK)
PIN 5	PIN 9	+5V
PIN 4	PIN 8	GROUND(BLUE)
PIN 3	PIN 3	RGB1_BLUE
PIN 2	PIN 1	RGB1_RED
PIN 1	PIN 6	GROUND(RED)
DMS-59	VGA1	CABLE FUNCTION

SHIELD	SHIELD	GROUND
PIN 46	PIN 7	GROUND(GREEN)
PIN 47	PIN 2	RGB2_GREEN
PIN 49	PIN 5	GROUND(ANALOG)
PIN 50	PIN 13	RGB2_HSYNC
PIN 51	PIN 14	RGB2_VSYNC
PIN 52	PIN 10	GROUND(SYNCS)
PIN 9	PIN 12	RGB2_SDA(DDC DATA)
PIN 10	PIN 15	RGB2_SCL(DDC CLOCK)
PIN 11	PIN 9	+5V
PIN 12	PIN 8	GROUND(BLUE)
PIN 13	PIN 3	RGB2_BLUE
PIN 14	PIN 1	RGB2_RED
PIN 15	PIN 6	GROUND(RED)
DMS-59	VGA2	CABLE FUNCTION

NOTE:1. OVERMOLD SPECIFICATION

- 1.1 DMS-59 BOOT MOLDED WITH SNOW WHITE PVC RESIN, UL94V-0.
- 1.2 VGA BOOT MOLDED WITH BLUE PVC RESIN, UL94V-0.

2. MECHANICAL SPECIFICATION

- 2.1 CABLE SHOULD STAND THE PULL FORCE 89-111N FOR 30 SECONDS WITH NO VISIBLE TERMINATION DAMAGE.
- 2.2 CABLE SHOULD PASS THE FLEX TEST IN 100 CYCLES AT EACH OF PLANES, PER EIA 364-41, CONDITION I.

3. CABLE ASSEMBLY ELECTRICAL SPECIFICATION

- 3.1 HI-POT VOLTAGE: 300VDC FOR 10ms.
- 3.2 INSULATION RESISTANCE: 20 MEGA Ohms MIN.
- 3.3 CONNECTION RESISTANCE: 2 Ohms MAX.
- 3.4 COAXIAL LINES CHARACTERISTIC IMPEDANCE: 75 ±10% Ohms @TDR
- 3.5 WRAP COPPER TAPE OVER BRAID, THEN CRIMP THE METAL CAN ON COPPER TAPE WITH 360°.
- 4. DVI CONNECTOR PLATING: AU FLASH PLATING.
- 5. SCREW SPEC.: 4-40 UNC.

MATERIAL LIST:

E	LABEL	I
D	VGA D-SUB CONNECTOR(FEMALE)	2
C	LFH THUMB SCREW 4-40 UNC	2
B	DMS-59 PLUG ASSY'(NATURE)	1
A	DVI ANALOG CABLE BLACK	2
ITEM	DESCRIPTION	QTY.

ENTER DESCRIPTION EC NO: DG2006-0186 DRWN:PDAI 2006/03/09 CHKD: 2006/03/09 APPR:TKAN 2006/03/10 REV	QUALITY SYMBOLS	GENERAL TOLERANCES (UNLESS SPECIFIED)	DIMENSION STYLE	SCALE	DESIGN UNITS	THIRD ANGLE PROJECTION															
	▽=0 ▽=0	<table border="1"> <thead> <tr> <th></th> <th>mm</th> <th>INCH</th> </tr> </thead> <tbody> <tr><td>4 PLACES</td><td>±---</td><td>±---</td></tr> <tr><td>3 PLACES</td><td>±---</td><td>±---</td></tr> <tr><td>2 PLACES</td><td>±---</td><td>±---</td></tr> <tr><td>1 PLACE</td><td>±---</td><td>±---</td></tr> </tbody> </table> ANGULAR ±---°		mm	INCH	4 PLACES	±---	±---	3 PLACES	±---	±---	2 PLACES	±---	±---	1 PLACE	±---	±---	MM/IN	---	METRIC	THIRD ANGLE PROJECTION
		mm	INCH																		
	4 PLACES	±---	±---																		
3 PLACES	±---	±---																			
2 PLACES	±---	±---																			
1 PLACE	±---	±---																			
	DRAFT WHERE APPLICABLE MUST REMAIN WITHIN DIMENSIONS	DRAWN BY: PDAI CHECKED BY: ZXDENG APPROVED BY: BORON MATERIAL NO.: 887685200	DATE: 2006/03/07 DATE: 2006/03/07 DATE: 2006/03/07	TITLE: DMS59(M) TO TWO VGA(F) ADAPTER CABLE MOLEX INCORPORATED	SHEET NO.: 2 OF 2																
			SIZE: A4 THIS DRAWING CONTAINS INFORMATION THAT IS PROPRIETARY TO MOLEX INCORPORATED AND SHOULD NOT BE USED WITHOUT WRITTEN PERMISSION																		