

**PLEASE CHECK WWW.MOLEX.COM FOR LATEST PART INFORMATION**

**Part Number:** [0873681112](#)  
**Status:** **Active**  
**Description:** 2.00mm (.079") Pitch Milli-Grid™ Receptacle, Surface Mount, Side Entry, 0.38µm (15µ") Gold (Au) Plating, 12 Circuits, Leadfree

**Documents:**

[3D Model](#) [Product Specification PS-87264 \(PDF\)](#)  
[Drawing \(PDF\)](#) [RoHS Certificate of Compliance \(PDF\)](#)

**Agency Certification**

CSA LR19980  
 UL E29179

**General**

Product Family PCB Receptacles  
 Series [87368](#)  
 Application Board-to-Board  
 Product Name Milli-Grid™

**Physical**

Circuits (Loaded) 12  
 Color - Resin Black  
 Durability (mating cycles max) 25  
 Flammability 94V-0  
 Glow-Wire Compliant No  
 Lock to Mating Part None  
 Material - Metal Phosphor Bronze  
 Material - Plating Mating Gold  
 Material - Plating Termination Tin  
 Material - Resin Nylon  
 Number of Rows 2  
 Orientation Right Angle  
 PCB Locator No  
 PCB Retention None  
 Packaging Type Embossed Tape on Reel  
 Pitch - Mating Interface (in) 0.079 In  
 Pitch - Mating Interface (mm) 2.00 mm  
 Plating min: Mating (µin) 15.2  
 Plating min: Mating (µm) 0.38  
 Plating min: Termination (µin) 101.6  
 Plating min: Termination (µm) 2.54  
 Polarized to PCB No  
 Surface Mount Compatible (SMC) N/A  
 Temperature Range - Operating -55°C to +105°C  
 Termination Interface: Style Surface Mount

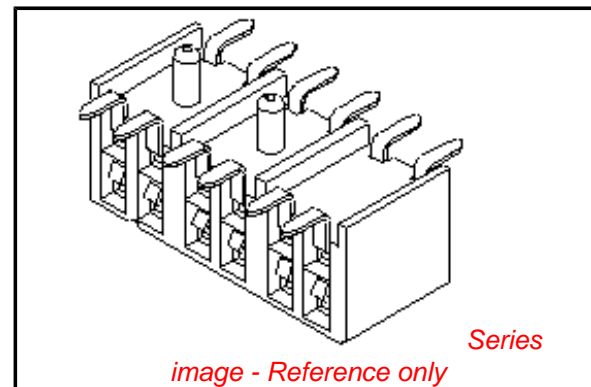
**Electrical**

Current - Maximum per Contact 1A  
 Voltage - Maximum 125V

**Solder Process Data**

Duration at Max. Process Temperature (seconds) 14  
 Lead-free Process Capability Reflow Capable (SMT only)  
 Max. Cycles at Max. Process Temperature 1  
 Process Temperature max. C 265

**Material Info**



**EU RoHS**

**ELV and RoHS Compliant**  
**REACH SVHC Contains SVHC: No**  
**Halogen-Free Status**

**China RoHS**



**Not Halogen-Free**

**Need more information on product environmental compliance?**

Email [productcompliance@molex.com](mailto:productcompliance@molex.com)  
 For a multiple part number RoHS Certificate of Compliance, [click here](#)

Please visit the [Contact Us](#) section for any non-product compliance questions.

**Search Parts in this Series**

[87368Series](#)

**Mates With**

[87758](#) Vertical Through Hole PCB Headers,  
[87759](#) Vertical Surface Mount PCB Headers,  
[87760](#) Right Angle Through Hole PCB Headers

**Reference - Drawing Numbers**

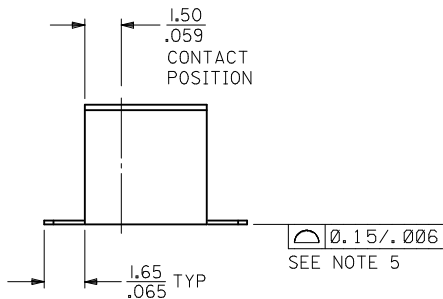
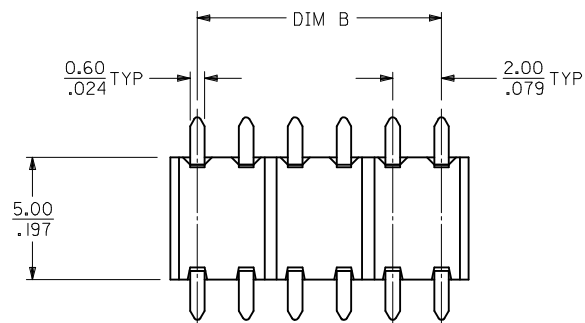
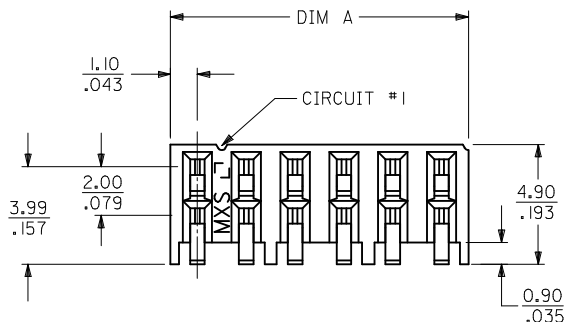
Product Specification  
Sales Drawing

PS-87264  
SD-87368-001

This document was generated on 05/04/2010

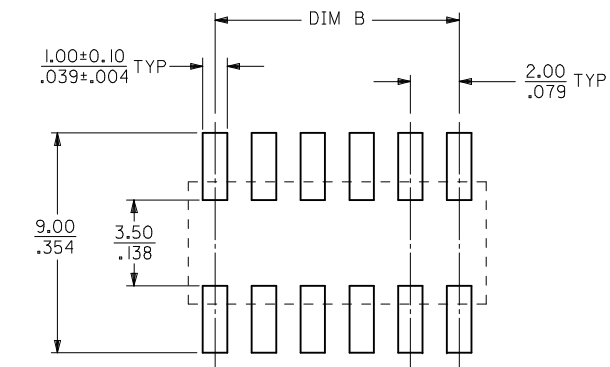
**PLEASE CHECK [WWW.MOLEX.COM](http://WWW.MOLEX.COM) FOR LATEST PART INFORMATION**

PART NUMBER IN TAPE/REEL	PART NUMBER IN TAPE/REEL	CKT. SIZE	DIM A	DIM B	W	EMBOSSED TYPE
0.76um/30u" GOLD	0.38um/15 u" GOLD					
-	87368-1110	10	10.20/0.402	8.00/0.315	24.00/0.945	A
-	87368-1112	12	12.20/0.480	10.00/0.394	24.00/0.945	A
87368-0320	87368-1120	20	20.20/0.795	18.00/0.709	32.00/1.260	B
-	87368-1140	40	40.20/1.583	38.00/1.496	56.00/2.205	C
-	87368-1150	50	50.20/1.976	48.00/1.890	72.00/2.835	B



NOTE:

- MATERIAL: HOUSING - NYLON, GLASS FILLED, UL94V-0  
COLOR: BLACK  
TERMINAL - PHOSPHOR BRONZE
- FINISHES: TERMINAL - SELECTIVE GOLD IN THE CONTACT AREA:  
THICKNESS = SEE TABLE  
2.54um/100um MIN. SELECTIVE TIN IN THE PC SOLDER TAIL AREA  
BOTH OVER 1.27um/50um MIN. NICKEL OVERALL
- PRODUCT SPECIFICATION: PS-87264
- CIRCUIT SIZE 12 IS SHOWN FOR ILLUSTRATION ONLY, SEE CHART FOR AVAILABLE CIRCUIT SIZES.
- COPLANARITY OF SOLDER TAIL IS TO BE MEASURED BY RESTING THE PART ON A FLAT GAUGE SURFACE.
- PART MATEABLE TO ALL MILLI-GRID HEADERS WITH MATING PIN LENGTH BETWEEN 2.50mm AND 4.20mm.
- PART IS PACK IN TAPE AND REEL.
- PARTS SHALL BE PACKED IN MOISTURE BARRIER BAG.



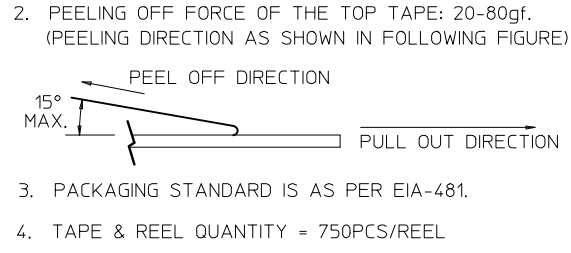
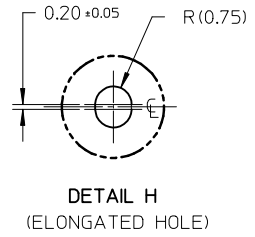
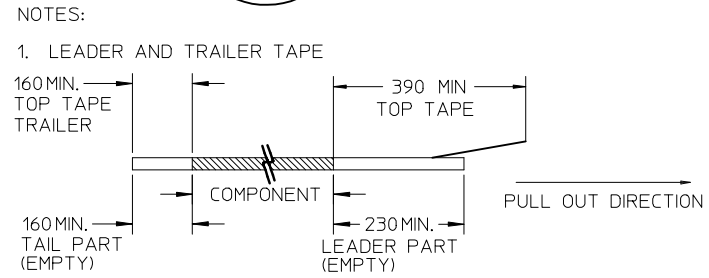
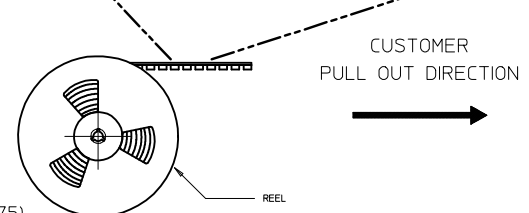
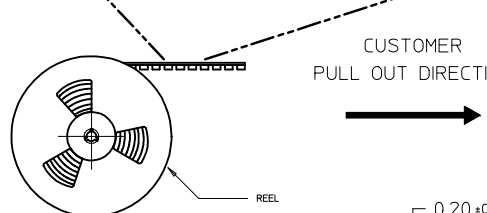
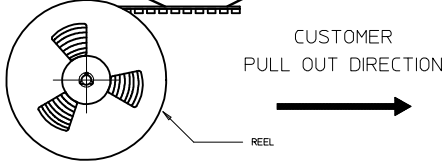
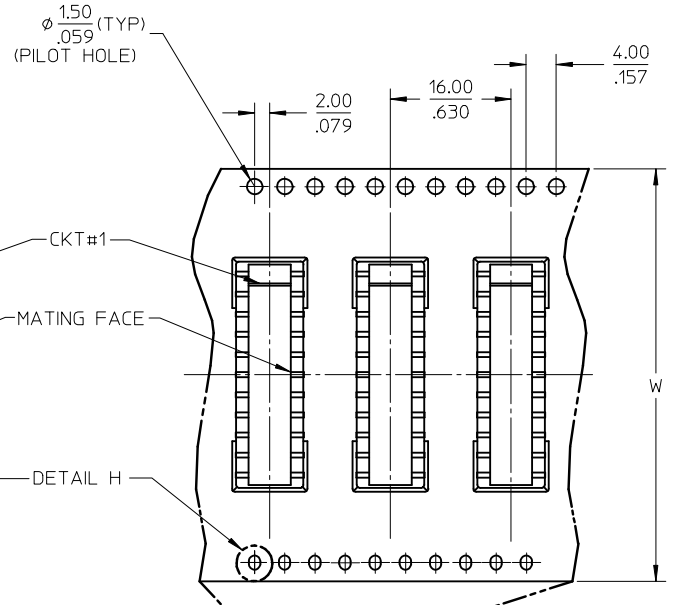
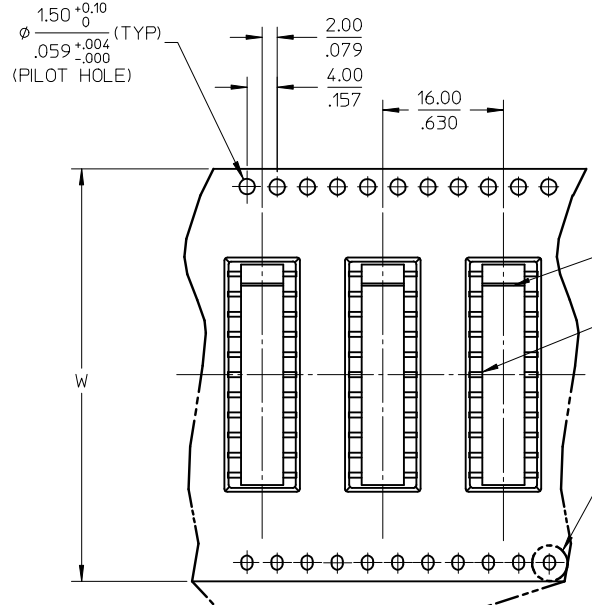
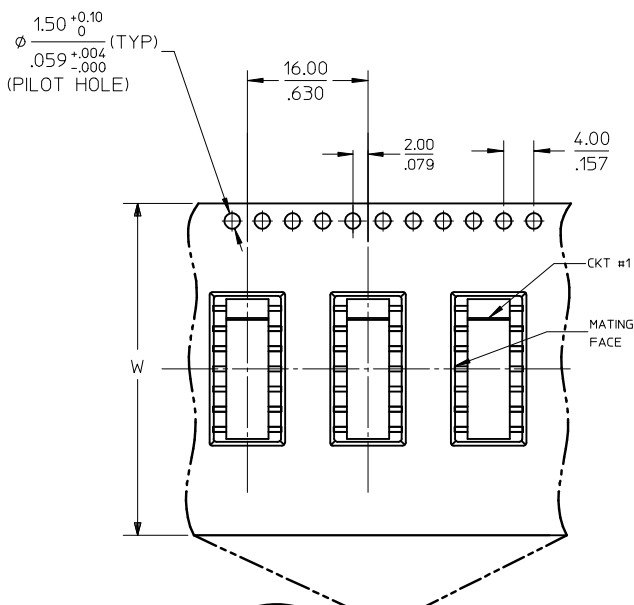
RECOMMENDED PC BOARD LAYOUT

CORRECT PILOT HOLES LOCATION EC NO: S2010-0008 DRWN:SKANG 2009/07/14 CHKD:ATSEE 2009/07/14 APPR:MLONG 2009/07/17	QUALITY SYMBOLS ▽=0 ∇=0	GENERAL TOLERANCES (UNLESS SPECIFIED)		DIMENSION STYLE		SCALE	DESIGN UNITS	THIRD ANGLE PROJECTION		
				MM/IN		NTS	METRIC			
			mm	INCH	DRAWN BY	DATE	TITLE			
		4 PLACES	± ---	± ---	JSGOH	1999/02/12	MGRID SIDE ENTRY RECEPTACLE SMT			
3 PLACES	± ---	± .008	CHECKED BY	DATE						
2 PLACES	± 0.20	± ---	LCHANG	1999/06/10	MOLEX INCORPORATED					
1 PLACE	± ---	± ---	APPROVED BY	DATE						
	ANGULAR ± 3 °		JLIM	1999/06/17	DOCUMENT NO. SHEET NO.					
DRAFT WHERE APPLICABLE MUST REMAIN WITHIN DIMENSIONS			MATERIAL NO.						SD-87368-001	
D4	REV	SIZE		THIS DRAWING CONTAINS INFORMATION THAT IS PROPRIETARY TO MOLEX INCORPORATED AND SHOULD NOT BE USED WITHOUT WRITTEN PERMISSION						
		A3								

**EMBOSSED TYPE A**

**EMBOSSED TYPE B**

**EMBOSSED TYPE C**



CORRECT PILOT HOLES LOCATION EC NO: S2010-0008 DRWN:SKANG 2009/07/14 CHKD:ATSEE 2009/07/14 APPR:MLONG 2009/07/17	DESCRIPTION D4	QUALITY SYMBOLS	GENERAL TOLERANCES (UNLESS SPECIFIED)	DIMENSION STYLE	SCALE	DESIGN UNITS	THIRD ANGLE PROJECTION
		$\blacktriangledown = 0$ $\triangleleft = 0$	mm    INCH 4 PLACES ± --- ± --- 3 PLACES ± --- ± .008 2 PLACES ± 0.20 ± --- 1 PLACE ± --- ± --- ANGULAR ± 3 °	MM/IN	N/T	METRIC	
				DRAWN BY: JSGOH    DATE: 1999/02/12	TITLE: MGRID SIDE ENTRY RECEPTACLE SMT		
				CHECKED BY: LCHANG    DATE: 1999/06/10	MATERIAL NO. SD-87368-001		
		APPROVED BY: JLIM    DATE: 1999/06/17	DOCUMENT NO. SD-87368-001			SHEET NO. 2 OF 2	
DRAFT WHERE APPLICABLE MUST REMAIN WITHIN DIMENSIONS			SEE TABLE THIS DRAWING CONTAINS INFORMATION THAT IS PROPRIETARY TO MOLEX INCORPORATED AND SHOULD NOT BE USED WITHOUT WRITTEN PERMISSION				