

PLEASE CHECK WWW.MOLEX.COM FOR LATEST PART INFORMATION

Part Number: [0878721115](#)
Status: **Active**
Overview: [KK®](#)
Description: 1.25mm (.049") Pitch Board-to-Board Header, Through Hole, Friction Lock, with Kinked PC Tails, 15 Circuits, Tin (Sn) Overall, Tube Packaging, Lead-free

Documents:

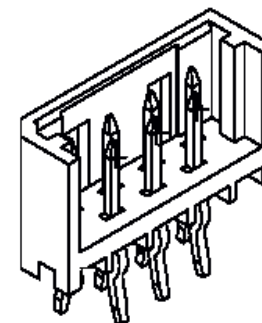
[3D Model](#) [RoHS Certificate of Compliance \(PDF\)](#)
[Drawing \(PDF\)](#)

General

Product Family	PCB Headers
Series	87872
Application	Board-to-Board
Comments	ZIGZAG
Overview	KK®
Product Name	N/A

Physical

Breakaway	No
Circuits (Loaded)	15
Circuits (maximum)	15
Color - Resin	Natural
Durability (mating cycles max)	10
First Mate / Last Break	No
Glow-Wire Compliant	No
Guide to Mating Part	No
Keying to Mating Part	None
Lock to Mating Part	Yes
Mated Height (in)	0.274 In
Mated Height (mm)	6.95 mm
Material - Metal	Brass
Material - Plating Mating	Tin
Material - Plating Termination	Tin
Material - Resin	High Temperature Thermoplastic
Number of Rows	2
Orientation	Vertical
PC Tail Length (in)	0.138 In
PC Tail Length (mm)	3.50 mm
PCB Locator	No
PCB Retention	Yes
PCB Thickness Recommended (in)	0.062 In
PCB Thickness Recommended (mm)	1.60 mm
Packaging Type	Tube
Pitch - Mating Interface (in)	0.049 In
Pitch - Mating Interface (mm)	1.25 mm
Plating min: Mating (µin)	120.00
Plating min: Mating (µm)	3.000
Plating min: Termination (µin)	120.00
Plating min: Termination (µm)	3.00
Polarized to Mating Part	Yes
Polarized to PCB	Yes
Shrouded	Partial
Stackable	No
Surface Mount Compatible (SMC)	No
Temperature Range - Operating	-40°C to +105°C



*Series
image - Reference only*

EU RoHS

**ELV and RoHS
Compliant**
**REACH SVHC
Contains SVHC: No**
**Halogen-Free
Status**

China RoHS



**Need more information on product
environmental compliance?**

Email productcompliance@molex.com
For a multiple part number RoHS Certificate of Compliance, [click here](#)

Please visit the [Contact Us](#) section for any non-product compliance questions.

Search Parts in this Series

[87872Series](#)

Mates With

[878712219 Board-to-Board Receptacle](#)

Termination Interface: Style

Through Hole - Kinked Pin

Electrical

Current - Maximum per Contact

2A

Voltage - Maximum

125V

Material Info

Reference - Drawing Numbers

Sales Drawing

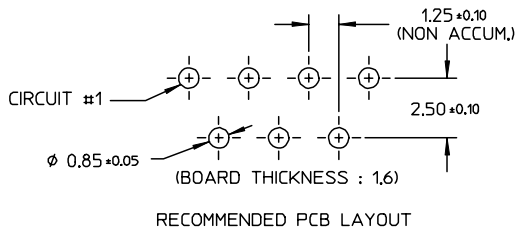
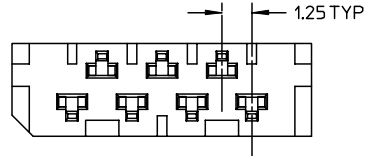
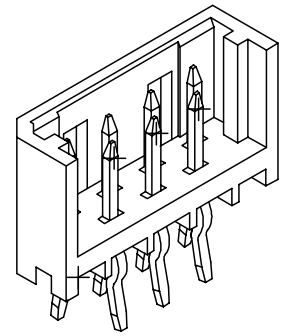
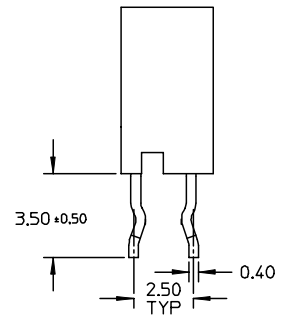
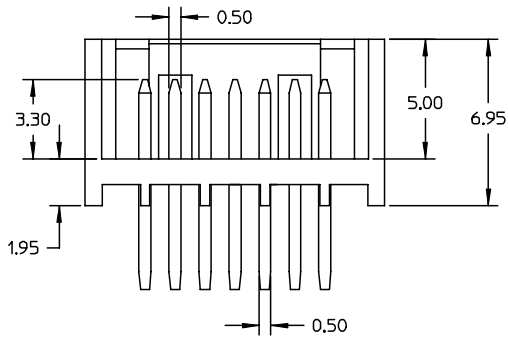
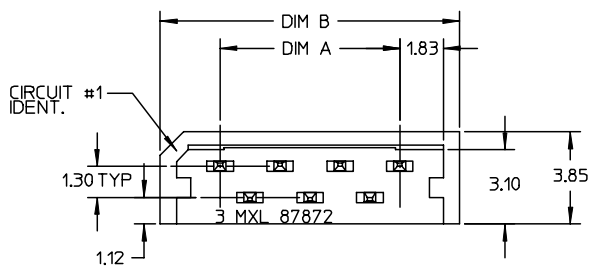
SD-87872-001

This document was generated on 04/19/2010

PLEASE CHECK WWW.MOLEX.COM FOR LATEST PART INFORMATION

87872

PART NUMBER	CKTS SIZE	DIM A	DIM B
87872-1103	3	2.5	7.5
87872-1105	5	5.0	10.0
87872-1107	7	7.5	12.5
87872-1109	9	10.0	15.0
87872-1111	11	12.5	17.5
87872-1113	13	15.0	20.0
87872-1115	15	17.5	22.5
87872-1117	17	20.0	25.0
87872-1119	19	22.5	27.5
87872-1121	21	25.0	30.0
87872-1123	23	27.5	32.5



- NOTES :
- MATERIAL :
 HOUSING : THERMOPLASTIC UL94 V-0
 TERMINAL : BRASS
 PLATING : 2.00um(80uin) MIN TIN OVER
 1.00um(40uin) MIN COPPER OVERALL
 - PART MATEABLE TO 87871-****

EC NO: S2004-0671 DRWN: BHLOW 2004/04/14 CHKD: PTLIM 2004/04/14 APPR: SKTOH 2004/04/19	QUALITY SYMBOLS	GENERAL TOLERANCES (UNLESS SPECIFIED)		SCALE NTS	DESIGN UNITS METRIC	THIRD ANGLE PROJECTION	REVISE ON CAD ONLY
	DESCRIPTION	mm	INCH	DIMENSION STYLE MM ONLY		TITLE	
REV	DESCRIPTION	4 PLACES	± ---	± ---	DRAWN BY	DATE	
A		3 PLACES	± ---	± ---	BHLOW	2004/04/01	
		2 PLACES	± 0.20	± ---	CHECKED BY	DATE	
		1 PLACE	± ---	± ---	PTLIM	2004/04/14	
		ANGULAR ± 3 °		APPROVED BY		DATE	
		DRAFT WHERE APPLICABLE		SCLOW	2004/04/14	MATERIAL NO.	DOCUMENT NO.
		MUST REMAIN WITHIN DIMENSIONS		THIS DRAWING CONTAINS INFORMATION THAT IS PROPRIETARY TO MOLEX INCORPORATED AND SHOULD NOT BE USED WITHOUT WRITTEN PERMISSION		SEE TABLE	SD-87872-001
							SHEET NO. 1 OF 1