

PLEASE CHECK WWW.MOLEX.COM FOR LATEST PART INFORMATION

Part Number: [0350989802](#)
Status: **Active**
Description: MP-Lock™ Quick Disconnect with Vibration Support, Female, for 16-20 AWG (1.30-0.50mm²); Metal Strip, Tab 5.20 by 0.50mm (.205 by .020"), Pre-Tin Plated

Documents:

[Drawing \(PDF\)](#) [RoHS Certificate of Compliance \(PDF\)](#)
[Product Specification PS-35097-001 \(PDF\)](#)

General

Product Family	Quick Disconnects
Series	35098
Crimp Quality Equipment	Yes
Product Name	MP-Lock™
Type	Quick Disconnect

Physical

Barrel Type	Open
Gender	Female
Glow-Wire Compliant	No
Insulation	None
Lock to Mating Part	None
Material - Metal	Brass
Orientation	Straight
Packaging Type	Reel
Polarized to Mating Part	No
Tab Thickness	0.51mm (.020")
Tab Width	5.21mm (.205")
Temperature Range - Operating	-40°C to +120°C
Wire Insulation Diameter	3.40mm (.134") max.
Wire Size AWG	16, 18, 20
Wire Size mm ²	0.50 - 1.30

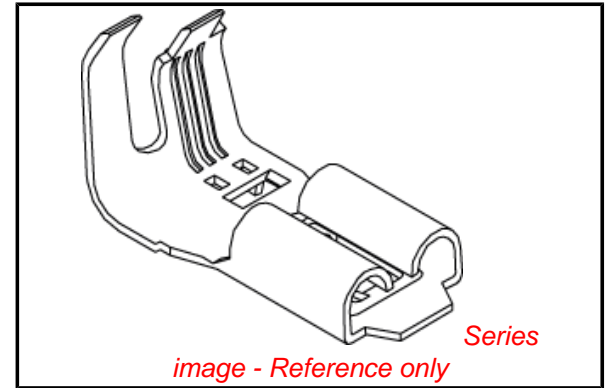
Electrical

Voltage - Maximum	250V
-------------------	------

Material Info

Reference - Drawing Numbers

Product Specification	PS-35097-001
Sales Drawing	SD-35098-9*02



EU RoHS

ELV and RoHS Compliant
REACH SVHC
Contains SVHC: No
Halogen-Free Status
Halogen-Free

China RoHS



Need more information on product environmental compliance?

Email productcompliance@molex.com
 For a multiple part number RoHS Certificate of Compliance, [click here](#)

Please visit the [Contact Us](#) section for any non-product compliance questions.

Search Parts in this Series

[35098Series](#)

Use With

5.21mm (.205") Tab

Application Tooling | [FAQ](#)

Tooling specifications and manuals are found by selecting the products below. Crimp Height Specifications are then contained in the Application Tooling Specification document.

Japan

Description	Product #
End-Feed Applicator	0573823100

DWG. NO.

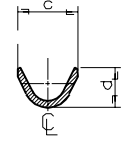
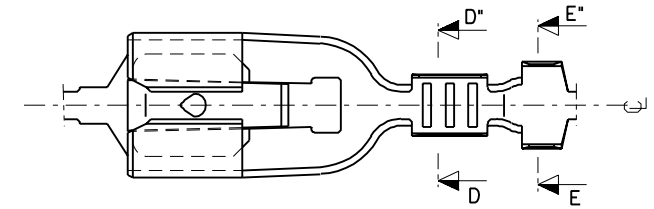
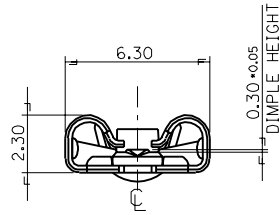
SIMILAR ITEM

PROJECT NO.

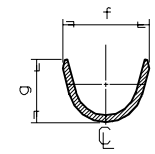
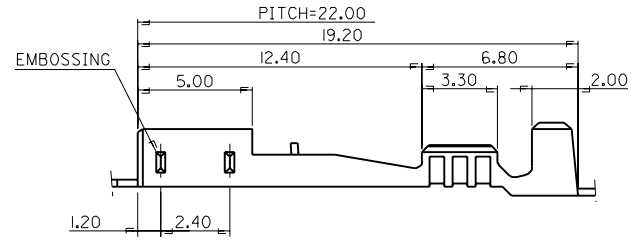
C

B

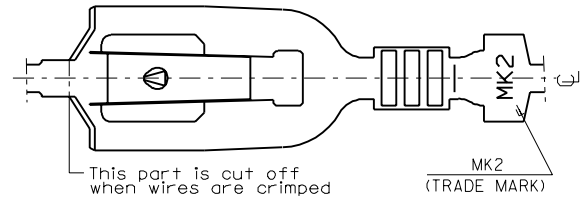
DO NOT SCALE DRAWING
DIMENSION IN METRIC



SECTION: D-D'



SECTION: E-E'



NOTES

1. MATERIAL: TIN-PLATED BRASS 0.30mm THICK'
2. FINISH: PRE-TIN PLATING
3. MATING TAB: 0.5(+) \times 5.2(w)

ENG.NO.	DIMENSION				WIRE RANGE
	c	d	f	g	
35098-9702	2.1	1.95	3.3	3.0	AWG #26-#20
35098-9802	2.8	2.9	4.1	4.2	AWG #20-#16

REVISED EC NO. KOR1998-00B3 DRWN:W.Y. YANG 98/07/09 CHK: CHK: APPR:	DESCRIPTION MAJOR CRITICAL C = 0	QUALITY SYMBOLS		GENERAL TOLERANCES: (UNLESS SPECIFIED)		SCALE 5:1	DESIGN UNITS <input checked="" type="checkbox"/> mm <input type="checkbox"/> INCH	THIRD ANGLE PROJECTION	DIMENSIONS: <input type="checkbox"/> mm <input type="checkbox"/> INCH <input checked="" type="checkbox"/> mm ONLY		SHT	REV	
		4 PLACES $\pm 0.$ mm $\pm.$ INCH	3 PLACES $\pm 0.$ mm $\pm.$ INCH	2 PLACES ± 0.30 mm $\pm.$ INCH	1 PLACE ± 0.30 mm $\pm.$ INCH	DRAWN BY & DATE W.Y. YANG 96/08/26		TITLE: .205 MP-LOCK RECEPTACLE TERMINAL					
		ANGULAR: \pm °				CHECKED BY & DATE B.K. CHOI 96/08/26		APPROVED BY & DATE C.W. LEE 96/08/26					
		DRAFT WHERE APPLICABLE MUST REMAIN WITHIN DIMENSIONS				CAD FILENAME S0989702.DGN		MATERIAL NO. SEE CHART		DRAWING NO. SD-35098-9*02		SHEET NO. 10F1	
THIS DRAWING CONTAINS INFORMATION THAT IS PROPRIETARY TO MOLEX INCORPORATED AND SHOULD NOT BE USED WITHOUT WRITTEN PERMISSION.												SIZE B	