

PLEASE CHECK WWW.MOLEX.COM FOR LATEST PART INFORMATION

Part Number: [0433755001](#)
Status: **Active**
Overview: [sabre](#)
Description: Sabre™ Crimp Terminal, Female, with Tin (Sn) Plated Brass Contact, Double 20+20 AWG, 2.85mm (.112") Max. Insulation Diameter, Reel Packaged

Documents:

[Drawing \(PDF\)](#) [RoHS Certificate of Compliance \(PDF\)](#)

General

Product Family	Crimp Terminals
Series	43375
Crimp Quality Equipment	Yes
Overview	sabre
Product Literature Order No	USA-113
Product Name	Sabre™

Physical

Durability (mating cycles max)	25
Gender	Female
Material - Metal	Brass
Material - Plating Mating	Tin
Material - Plating Termination	Tin
Packaging Type	Reel
Plating min: Mating (µin)	20
Plating min: Mating (µm)	0.50
Plating min: Termination (µin)	20
Plating min: Termination (µm)	0.50
Termination Interface: Style	Crimp or Compression
Wire Insulation Diameter	.071mm-.112mm
Wire Size AWG	20+20
Wire Size mm²	N/A

Material Info

Reference - Drawing Numbers

Sales Drawing	SD-43375-331
---------------	--------------

EU RoHS

**ELV and RoHS
Compliant
REACH SVHC
Not Reviewed
Halogen-Free
Status**

China RoHS



Not Reviewed

Need more information on product environmental compliance?

Email productcompliance@molex.com
 For a multiple part number RoHS Certificate of Compliance, [click here](#)

Please visit the [Contact Us](#) section for any non-product compliance questions.

Search Parts in this Series

[43375Series](#)

Mates With

[43178 Male Crimp Terminals](#)

Use With

[44441 Receptacle Housings](#)

Application Tooling | FAQ

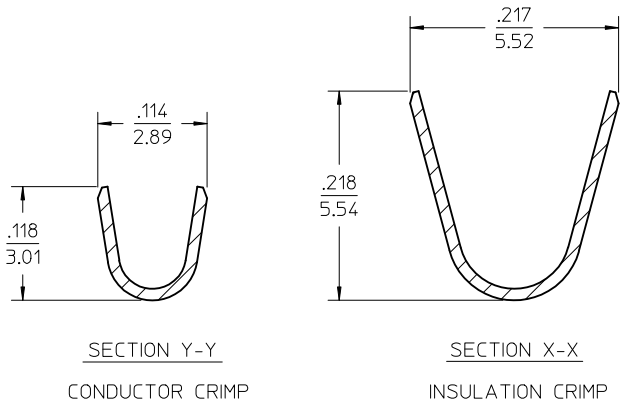
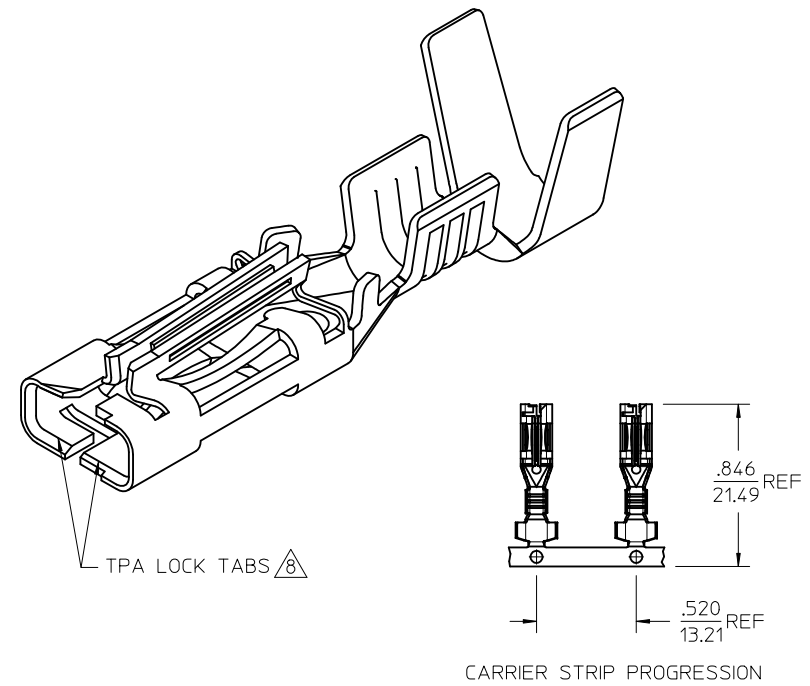
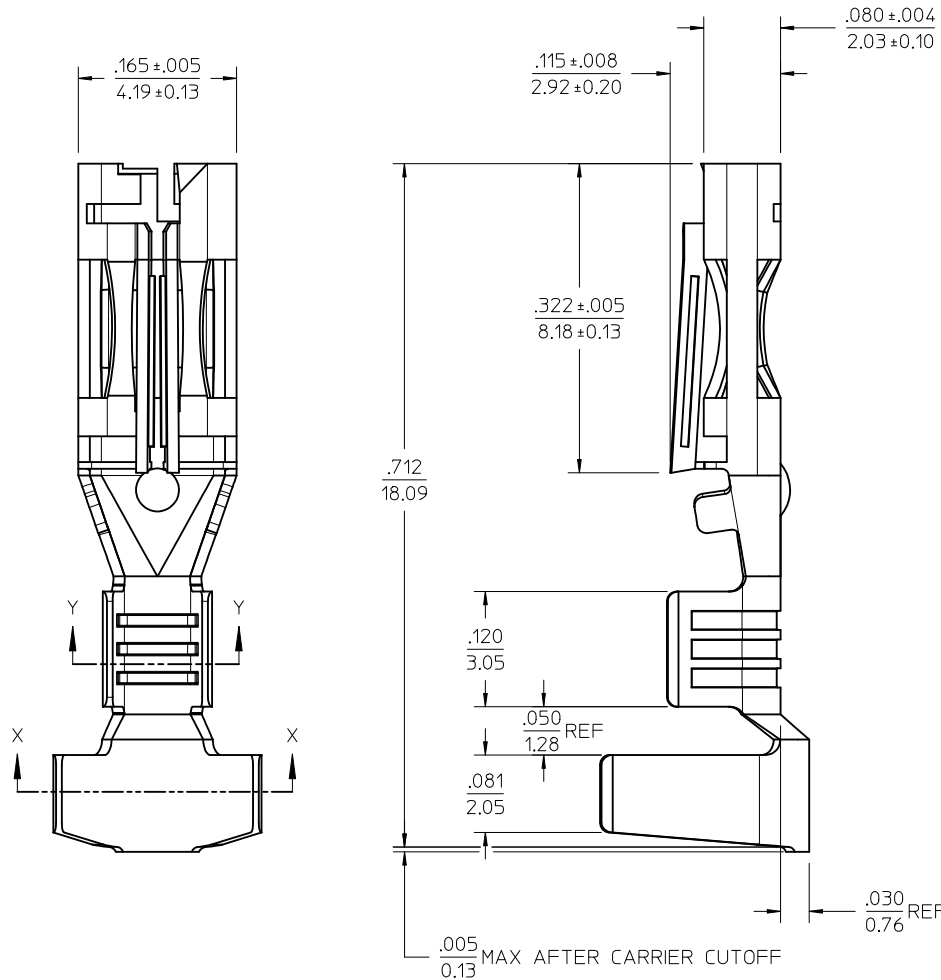
Tooling specifications and manuals are found by selecting the products below. Crimp Height Specifications are then contained in the Application Tooling Specification document.

Global

Description	Product #
Fine Adjust Applicator for Sabre™ Flat Blade Crimp Terminal	0639012900
Fine Adjust Applicator for Sabre™ Flat Blade Crimp Terminal	0639013000
T2 Terminator for Sabre™ Flat Blade Crimp Terminal	0639112900
Hand Crimp Tool for Sabre™ Crimp Terminal	0638232900
T2 Terminator Tooling Die for Sabre™ Flat Blade Crimp Terminal	0639113000

This document was generated on 05/19/2010

PLEASE CHECK WWW.MOLEX.COM FOR LATEST PART INFORMATION



- NOTES:
1. MATERIAL: BRASS
 2. FINISH: 20 MICROINCH / 0.5 MICROMETER MIN. PREPLATED HOT TIN DIP.
 3. PRODUCT SPECIFICATION: PS-44441-001.
 4. PACKAGING: TERMINALS WOUND ON 24" REELS WITH PAPER INTERLEAF, 3000 PER REEL.
 5. THIS TERMINAL INTENDED FOR USE WITH TWO 20 AWG STRANDED WIRES, UL STYLE 1007 OR 1015.
 6. TERMINAL MATES TO .125/3.18 WIDE X .020/0.51 THICK FLAT BLADE TERMINALS. MATING TERMINAL SERIES: 43178
 7. SEE PRODUCT SPECIFICATION FOR INSULATOR HOUSINGS USED WITH TERMINAL.
- ⚠️ TERMINAL HAS TPA (TOTAL POSITIONING ASSURANCE) OPTIONAL ACTIVATION FEATURE THAT WHEN ACTIVATED AND USED WITH MOLEX "SABRE" SERIES RECEPTACLE HOUSINGS PROVIDES A SECONDARY LOCK SYSTEM WHICH ENSURES AGAINST TERMINAL BACKOUTS.

REL 2X20 VERSION EC NO: UCP2010-1804 DRWN: BWIRKUS 2010/02/11 CHKD: BWIRKUS 2010/02/11 APPR: BWIRKUS 2010/02/15	QUALITY SYMBOLS ∇=0 ∇=0 ∇=0	GENERAL TOLERANCES (UNLESS SPECIFIED)		DIMENSION STYLE		SCALE	DESIGN UNITS	THIRD ANGLE PROJECTION	
				IN/MM		10:1	INCH		
				DRAWN BY	DATE	TITLE			
				CHECKED BY	DATE	TERMINAL, FEM. 18-20 AWG W/TPA; FOR .125 WD. TABS UL 1007 OR 1015 WIRE			
		APPROVED BY		DATE	MOLEX MOLEX INCORPORATED				
		ANGULAR ±1/2°		MATERIAL NO.		DOCUMENT NO.		SHEET NO.	
		DRAFT WHERE APPLICABLE MUST REMAIN WITHIN DIMENSIONS		433755001		SD-43375-331		1 OF 1	
		THIS DRAWING CONTAINS INFORMATION THAT IS PROPRIETARY TO MOLEX INCORPORATED AND SHOULD NOT BE USED WITHOUT WRITTEN PERMISSION							