

**PLEASE CHECK WWW.MOLEX.COM FOR LATEST PART INFORMATION**

**Part Number:** [0497019902](#)  
**Status:** **Active**  
**Description:** .187mm (.007") Male Terminal

**Documents:**

[Packaging Specification \(PDF\)](#)  
[Drawing \(PDF\)](#)

[Product Specification PS-49006-001 \(PDF\)](#)  
[RoHS Certificate of Compliance \(PDF\)](#)

**General**

Product Family	Crimp Terminals
Series	<a href="#">49701</a>
Crimp Quality Equipment	Yes
Product Name	N/A

**Physical**

Durability (mating cycles max)	1,000
Gender	Male
Material - Metal	Brass
Material - Plating Mating	Tin
Material - Plating Termination	Tin
Packaging Type	Reel
Termination Interface: Style	Crimp or Compression
Wire Insulation Diameter	2.9mm (.115")
Wire Size AWG	12, 14
Wire Size mm <sup>2</sup>	1.63MM, 2.06MM

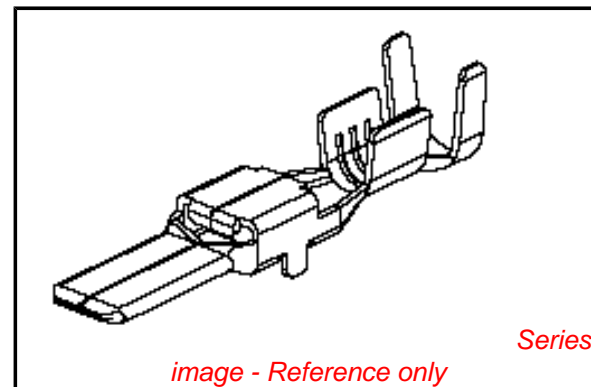
**Electrical**

Current - Maximum per Contact	4A, 5A
Voltage - Maximum	13V DC (RMS)

**Material Info**

**Reference - Drawing Numbers**

Product Specification	PS-49006-001
Sales Drawing	SD-49701-001



**EU RoHS**

**ELV and RoHS  
Compliant**  
**REACH SVHC  
Contains SVHC: No**  
**Halogen-Free  
Status**

**China RoHS**



**Need more information on product  
environmental compliance?**

Email [productcompliance@molex.com](mailto:productcompliance@molex.com)  
 For a multiple part number RoHS Certificate of  
 Compliance, [click here](#)

Please visit the [Contact Us](#) section for any  
 non-product compliance questions.

**Search Parts in this Series**  
[49701Series](#)

**Mates With**  
[35441](#)

DWG. NO.  
SD-49701-001

SIMILAR ITEM

PROJECT NO.

C

B

DO NOT SCALE DRAWING  
DIMENSION IN METRIC

8 7 6 5 4 3 2 1

F

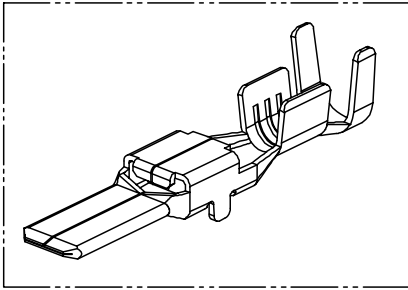
E

D

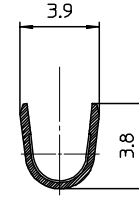
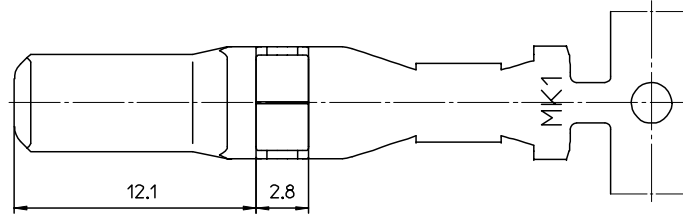
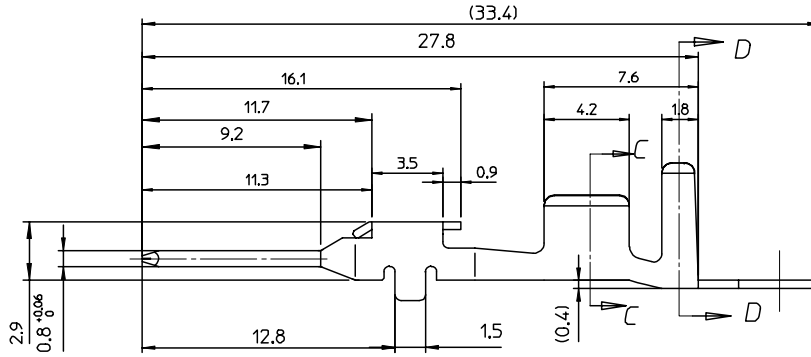
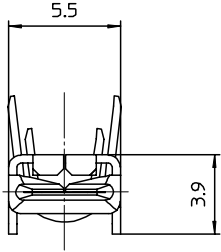
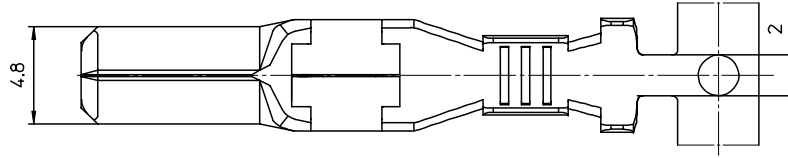
C

B

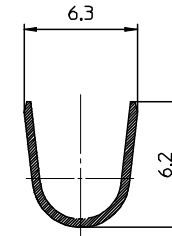
A



ISOMETRIC VIEW



SECTION C-C



SECTION D-D

NOTES

- MATERIAL: BRASS, THICK=0.39  
FINISH: PRE-TIN PLATING
- MATING TERMINAL: 35441-9\*02  
APPLICABLE HOUSING: 49006-4610

NEW RELEASED ECN NO. KOR2004-0071 DRWN: B.C.YOON 03/12/11 CHK: B.C.YOON 03/12/11 APPR: C.W.LEE	DESCRIPTION MAJOR CRITICAL	GENERAL TOLERANCES: (UNLESS SPECIFIED)		SCALE 4:1	DESIGN UNITS <input checked="" type="checkbox"/> mm <input type="checkbox"/> INCH	THIRD ANGLE PROJECTION	DIMENSIONS: <input type="checkbox"/> mm <input type="checkbox"/> INCH <input checked="" type="checkbox"/> mm ONLY		SHT	REV
		4 PLACES	±0.	±.	DRAWN BY & DATE B.C.YOON 03/02/12		TITLE: <b>.187 MALE TERMINAL</b>	REVISE ON CAD ONLY		
		3 PLACES	±0.	±.	CHECKED BY & DATE Y.SIK.KIM 03/02/13					
		2 PLACES	±0.	±.	APPROVED BY & DATE C.W.LEE 03/02/13				MOLEX INCORPORATED	
1 PLACE	±0.3	±.	CAD FILENAME SD49701.MI		MATERIAL NO. 497019902	DRAWING NO. SD-49701-001			SHEET NO. 1 OF 1	
A	REV	ANGULAR: ± 3 °		DRAFT WHERE APPLICABLE MUST REMAIN WITHIN DIMENSIONS			THIS DRAWING CONTAINS INFORMATION THAT IS PROPRIETARY TO MOLEX INCORPORATED AND SHOULD NOT BE USED WITHOUT WRITTEN PERMISSION.			SIZE B

KOREA

MX-A3

8

7

6

5

4

3

2