

**PLEASE CHECK WWW.MOLEX.COM FOR LATEST PART INFORMATION**

**Part Number:** [0563772001](#)  
**Status:** **Active**  
**Description:** CRC™ Shielded Rectangular I/O Receptacle Shell, Panel Mount, Signal, 20 Circuits, Rear Mount Type

**Documents:**

[Drawing \(PDF\)](#) [Product Specification PS-51238-018 \(PDF\)](#)  
[Product Specification PS-51238-010 \(PDF\)](#) [RoHS Certificate of Compliance \(PDF\)](#)

**General**

Product Family	I/O Connectors
Series	56377
Application	Panel-Mount, Wire-to-Wire
Component Type	Panel Mount Shell
Product Name	CRC™
Type	N/A

**Physical**

Boot Color	N/A
Circuits (Loaded)	N/A
Circuits (maximum)	20
Durability (mating cycles max)	100
Gender	Receptacle
Keying to Mating Part	Yes
Lock to Mating Part	Yes
Material - Plating Mating	n/a
Orientation	Vertical
Packaging Type	Tray
Panel Mount	Rear
Pitch - Mating Interface (in)	0.000 In
Pitch - Mating Interface (mm)	0.00 mm
Polarized to Mating Part	Yes
Polarized to PCB	N/A
Surface Mount Compatible (SMC)	N/A
Temperature Range - Operating	-40°C to +105°C
Termination Interface: Style	N/A
Waterproof / Dustproof	No

**Electrical**

Current - Maximum per Contact	3.5A
Shield Type	Full Shield
Shielded	Yes
Voltage - Maximum	250V AC (RMS)/DC

**Material Info**

**Reference - Drawing Numbers**

Product Specification	PS-51238-010, PS-51238-018, RPS-51238-001
Sales Drawing	SD-56377-008



*image - Reference only*

**EU RoHS**  
**ELV and RoHS**  
**Compliant**  
**REACH SVHC**  
 Not Reviewed  
**Halogen-Free**  
**Status**  
 Not Reviewed

**China RoHS**



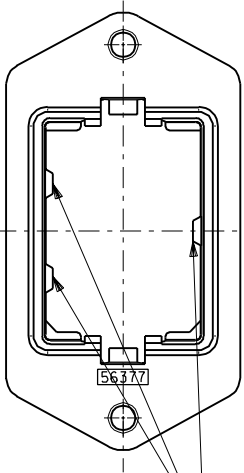
**Need more information on product environmental compliance?**

Email [productcompliance@molex.com](mailto:productcompliance@molex.com)  
 For a multiple part number RoHS Certificate of Compliance, [click here](#)

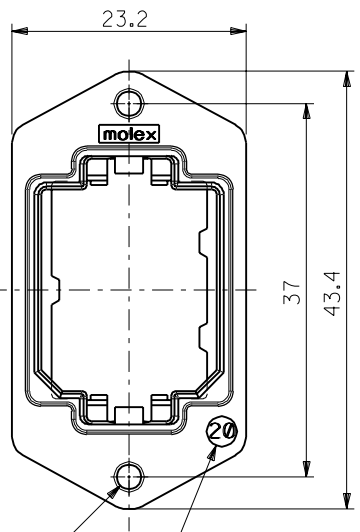
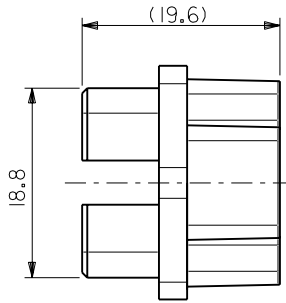
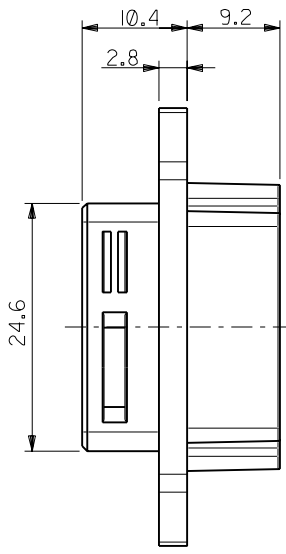
Please visit the [Contact Us](#) section for any non-product compliance questions.

**Search Parts in this Series**  
[56377Series](#)

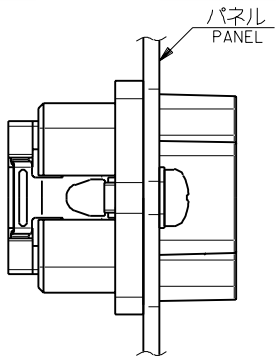
**Use With**  
[51233-201\\*](#)|[51238-201\\*](#)



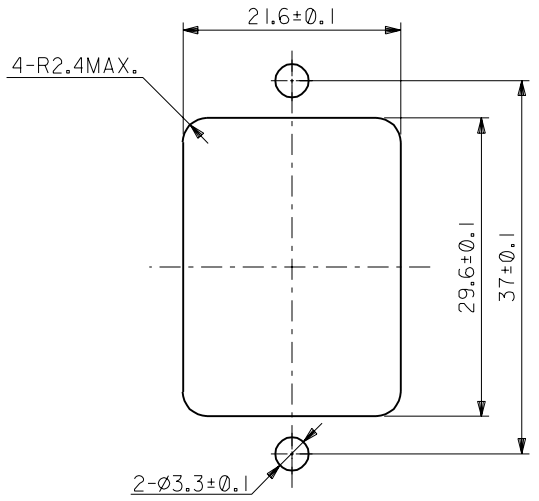
ハウジング挿入方向キー  
POLARIZATIONS KEY FOR HOUSING



2-M3x0.5 SIZE IDENTIFICATION



パネル後面取り付け  
REAR MOUNT TYPE



推奨パネル切り取り寸法 (後面取り付け)  
RECOMMENDED PANEL OPENING (REAR MOUNTING)

注記  
NOTES

1. 材質  
MATERIAL  
亜鉛合金, ニッケルメッキ  
ZINC ALLOY, Ni PLATING
2. 適用ハウジングアッセンブリ: 51233-201\* (PIN HS'G ASS'Y)  
51238-201\* (SOCKET HS'G ASS'Y)  
APPLICABLE HOUSING ASS'Y: 51233-201\* (PIN HS'G ASS'Y)  
51238-201\* (SOCKET HS'G ASS'Y)
3. 推奨ねじ締め付けトルク: 5~6 kgf・cm  
RECOMMENDED SCREW TIGHTENING TORQUE: 5~6 kgf・cm

56377-2001	56377-****
------------	------------

MATERIAL.NO	MODEL.NO
-------------	----------

DIMENSIONS:		SHT	REV
<input type="checkbox"/> mm	<input type="checkbox"/> INCH	<input checked="" type="checkbox"/> mm	<input type="checkbox"/> ONLY
		REVISE ON CAD ONLY	

EC NO.	REVISED 01/10/17
DRWN: CH'K: APPR:	EC NO. J2002-0932
	DRWN: S.AKIYAMA
	CH'K: J.MIYAZAWA
	APPR: Y.O.IITO
EC NO.	RELEASED 01/02/09
DRWN: CH'K: APPR:	EC NO. JD2001-1040
	DRWN: S.AKIYAMA
	CH'K: J.MIYAZAWA
	APPR: H.IKESUGI

DESCRIPTION	注記参照 SEE NOTES
FINISH 仕上げ	#
WIRE RANGE 適用電線範囲	#
INS. RANGE 被覆外径	#

MATERIAL 材料	注記参照 SEE NOTES
----------------	-------------------

GENERAL TOLERANCES: (UNLESS SPECIFIED) 一般公差	SCALE 2-1	DESIGN UNITS <input checked="" type="checkbox"/> mm <input type="checkbox"/> INCH
10 UNDER 未満	±0.2	DRAWN BY & DATE <i>S. Akiyama</i> / 01/17/25
10 OVER 30 UNDER 以上 未満	±0.25	
30 OVER 以上	±0.3	
ANGLE 角度	±3°	CHECKED BY & DATE <i>J. Miyazawa / Y. Ito</i>
		APPROVED BY & DATE <i>H. Ikessugi</i>
		CAD FILE NAME 56377008.S01

THIRD ANGLE PROJECTION	TITLE: COMPACT ROBOT CONN. (CRC) RECEPTACLE SHELL
<input checked="" type="checkbox"/> mm <input type="checkbox"/> INCH	<input checked="" type="checkbox"/> mm ONLY
MATERIAL NO. SEE CHART	
DRAWING NO. SD-56377-008	
SHEET NO. 1 OF 1	

MATERIAL NO. SEE CHART		
DRAWING NO. SD-56377-008		
SHEET NO. 1 OF 1		
THIS DRAWING CONTAINS INFORMATION THAT IS PROPRIETARY TO MOLEX INCORPORATED AND SHOULD NOT BE USED WITHOUT WRITTEN PERMISSION.		
SIZE B		

DO NOT SCALE DRAWING