

**PLEASE CHECK WWW.MOLEX.COM FOR LATEST PART INFORMATION**

**Part Number:** [0334670006](#)  
**Status:** **Active**  
**Overview:** mx64 sealed single row connectors  
**Description:** 2.54mm (.100") Pitch MX64™ Terminal, Gold (Au) Plating, 18-20 AWG, Left Reel Payoff, Also used with MX123™ Female Receptacle Housing

**Documents:**

[Drawing \(PDF\)](#) [RoHS Certificate of Compliance \(PDF\)](#)

**General**

Product Family	Crimp Terminals
Series	<a href="#">33467</a>
Comments	Left Reel Payoff
Crimp Quality Equipment	Yes
Overview	<a href="#">mx64 sealed single row connectors</a>
Product Name	MX123, MX64™

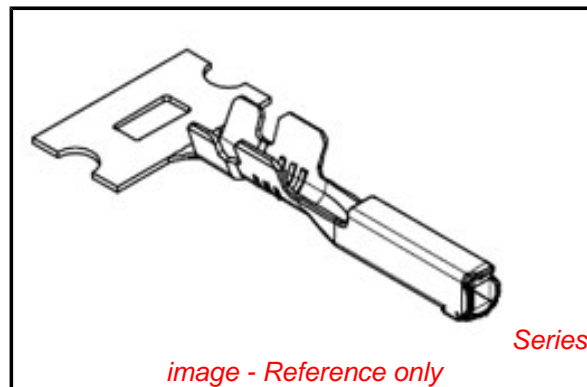
**Physical**

Gender	Female
Material - Metal	Copper
Material - Plating Mating	Gold
Packaging Type	Reel
Plating min: Mating (µin)	30
Plating min: Mating (µm)	0.76
Termination Interface: Style	Crimp or Compression
Wire Insulation Diameter	1.50-2.06mm (.059-.081")
Wire Size AWG	18, 20
Wire Size mm²	N/A

**Material Info**

**Reference - Drawing Numbers**

Packaging Specification	PK-30907-759, PK-31300-516
Sales Drawing	SD-33468-001



*image - Reference only*

**EU RoHS**

**ELV and RoHS Compliant**

**REACH SVHC**

**Contains SVHC: No**

**Halogen-Free**

**Status**

**Halogen-Free**

**China RoHS**



**Need more information on product environmental compliance?**

Email [productcompliance@molex.com](mailto:productcompliance@molex.com)  
 For a multiple part number RoHS Certificate of Compliance, [click here](#)

Please visit the [Contact Us](#) section for any non-product compliance questions.

**Search Parts in this Series**

[33467Series](#)

**Use With**

MX64™ Sealed Single Row Crimp Housing 31403 , MX123™ Female Receptacle Housing 34566 , 34576

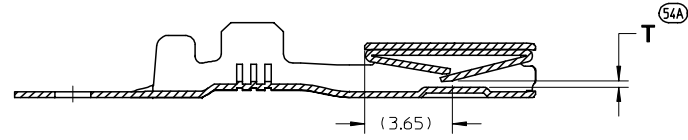
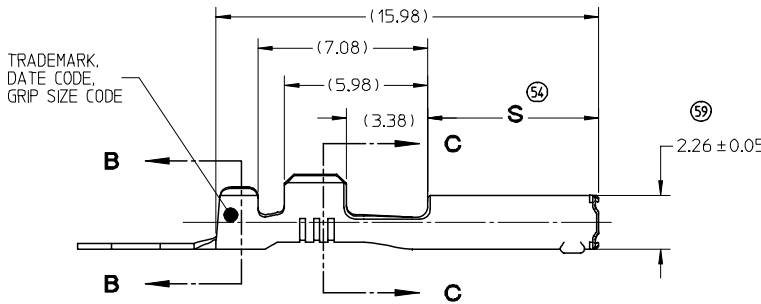
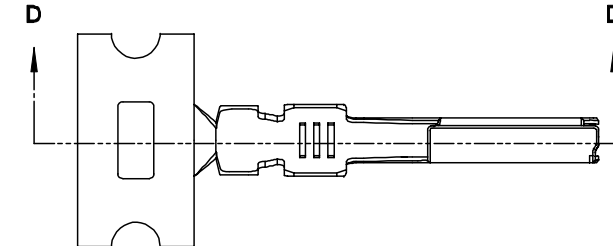
**Application Tooling | FAQ**

*Tooling specifications and manuals are found by selecting the products below. Crimp Height Specifications are then contained in the Application Tooling Specification document.*

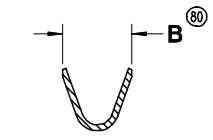
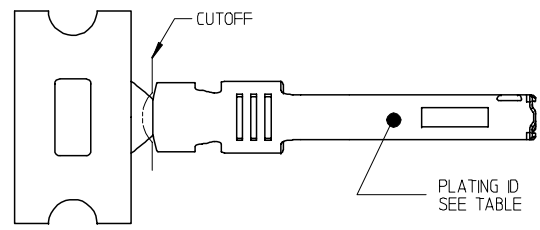
**Global**

Description	Product #
Hand Crimp Tool	<a href="#">0638114200</a>
Manual Extraction Tool	<a href="#">0638131400</a>
FineAdjust™ Applicator	<a href="#">0638673000</a>

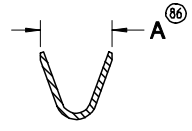
**PLEASE CHECK [WWW.MOLEX.COM](http://WWW.MOLEX.COM) FOR LATEST PART INFORMATION**



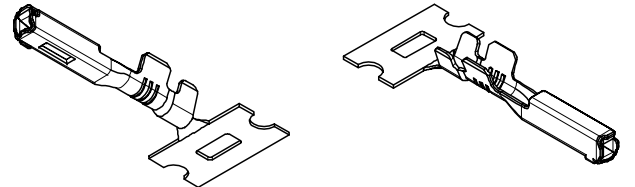
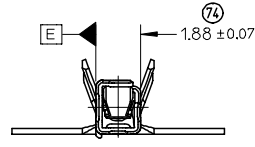
SECTION D-D



SECTION B-B



SECTION C-C



ISO VIEWS  
SCALE 3:1

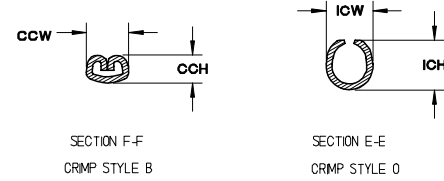
- NOTES: (UNLESS OTHERWISE SPECIFIED)
1. MATERIALS: SEE TABLE
  2. PACKAGING SPECIFICATION: PK-31300-516 AND PK-30907-759
  3. CRMPED LEAD MEETS THE FOLLOWING:
    - 3.1. SAE/USCAR-21, MAY 2002
    - 3.2. SAE/USCAR-2, REV. 3, APRIL 2001
    - 3.3. SAE/USCAR-12, REV. 2
    - 3.4. GMW #3191 AUGUST 22, 2000 (DRAFT) TEMPERATURE CLASS 3, APPLES ONLY TO Au PARTS

GRIP SIZE GAGE	GRIP SIZE CODE	PART NUMBER	PART REV	REEL PAYOFF DIRECTION	DIM A	DIM B	DIM S	DIM T	BASE MATERIAL	PLATING ID	LUBRICATION
22	A	33468-0002	G	D	2,3	2,3	7,15 ± 0,10	0,26 ± 0,07	COPPER ALLOY	Sn Lead Free	NO
		33468-0001	G	B					COPPER ALLOY	Au Lead Free	NO
		33467-0003	G	B	2,3	2,3	6,97-7,27	0,26 ± 0,07	COPPER ALLOY	Au Lead Free	NO
18/20	B	33468-0004	G	D	3,0	2,9	7,15 ± 0,10	0,26 ± 0,07	COPPER ALLOY	Sn Lead Free	NO
		33468-0003	G	B					COPPER ALLOY	Au Lead Free	NO
		33467-0006	G	D	3,0	2,9	6,97-7,27	0,26 ± 0,07	COPPER ALLOY	Au Lead Free	NO
		33467-0005	G	B							

ENTER DESCRIPTION EC NO: UAU2007-0559 (DR)W.DHEMNI 2007/04/12 (CHK)D.D.HEMNI 2007/04/13 (APP)R.BOSER 2007/04/13	QUALITY SYMBOLS ▽=0 ▽=0	GENERAL TOLERANCES (UNLESS SPECIFIED)		DIMENSION STYLE MM ONLY	SCALE 5:1	DESIGN UNITS METRIC	THIRD ANGLE PROJECTION
		4 PLACES ± --- ± --- 3 PLACES ± --- ± --- 2 PLACES ± 0.10 ± --- 1 PLACE ± 0.3 ± ---	DRAWN BY L. PULLIAM 2/3/2006	DATE 2/3/2006	TITLE MX64 RECEPTACLE TERMINAL		
		ANGULAR ± 3 °	CHECKED BY D. HEMNANI 2/3/2006	DATE 2/3/2006	MOLEX INCORPORATED		
		MATERIAL NO. SEE TABLE	APPROVED BY B. MOSER 2/3/2006	DATE 2/3/2006	DOCUMENT NO. SD-33468-001	SHEET NO. 1 OF 3	

WIRE APPLICATION SEE NOTE 2		APPLICATOR TOOLING INFORMATION TABLE																
SAE AWG	METRIC mm <sup>2</sup>	A	B	C	D	E	F	G	H	J	K	L	M	N	P	R	S	T
FOR TOLERANCE SEE APPLICATOR TOOLING TOLERANCE TABLE																		
18	(0.8)	0.470	1.803	7.1	12.13	0.944	6.5	1.783	1.83	1.885	0.98	0.98	0.22	2.10	1.90	0.34	2.10	0.98
20	(0.5)	0.470	1.803	7.1	12.13	0.944	6.5	1.783	1.83	1.885	0.98	0.98	0.22	2.10	1.90	0.34	2.10	0.98
22	(0.35)	0.353	1.457	7.4	12.14	0.880	6.3	1.435	2.29	1.700	1.02	0.89	0.17	1.97	1.71	0.31	1.27	0.68

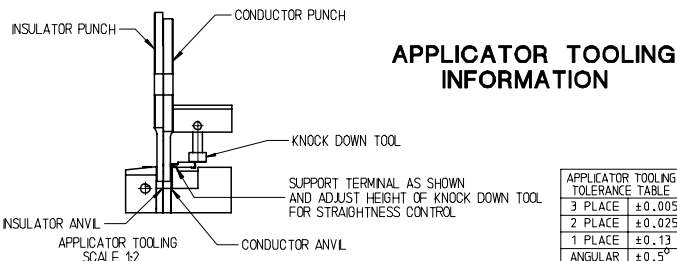
TERMINAL CRIMP INFORMATION TABLE				
PART NUMBER	CONDUCTOR CRIMP HEIGHT CCH TOL. ±0.05mm	CONDUCTOR CRIMP WIDTH CCW TOL. ±0.05mm	INSULATOR CRIMP HEIGHT ICH TOL. ±0.1mm	INSULATOR CRIMP WIDTH ICW TOL. ±0.1mm
33467-0005 33467-0006 33468-0003 33468-0004	1.15	1.80	2.10	1.95
33467-0005 33467-0006 33468-0003 33468-0004	1.10	1.80	1.95	1.95
33467-0003 33467-0004 33468-0001 33468-0002	0.95	1.45	1.60	1.80



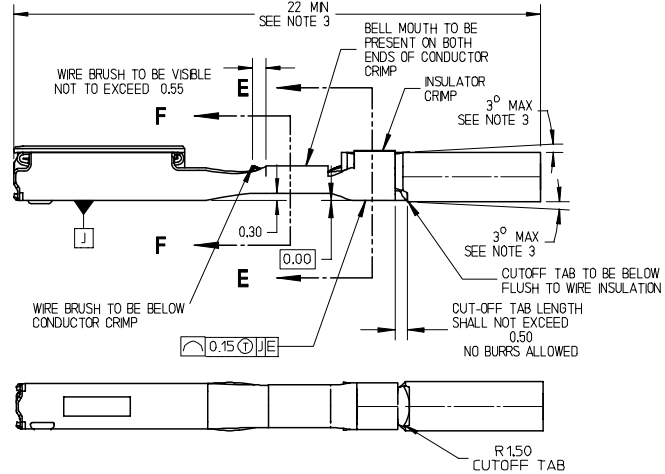
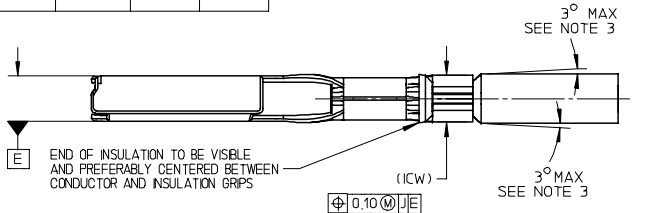
SUPPLIER APPLICATOR TOOLING TABLE SEE NOTE 4.2	
PART NUMBER	DESCRIPTION
63867-3000	MX64 CRIMP APPLICATOR WITH APPLICATOR TOOL KIT 18/20 AWG (PAYOFF DIRECTION D (LEFT PAYOFF) (CONTACT MOLEX FOR PAYOFF DETAIL))
63867-3070	MX64 APPLICATOR TOOL KIT 18/20 AWG
63867-3100	MX64 CRIMP APPLICATOR WITH APPLICATOR TOOL KIT 22 AWG (PAYOFF DIRECTION D (LEFT PAYOFF) (CONTACT MOLEX FOR PAYOFF DETAIL))
63867-3170	MX64 APPLICATOR TOOL KIT 22 AWG

- NOTES: (UNLESS OTHERWISE SPECIFIED, APPLIES TO CRIMPED LEAD ONLY)
- TERMINAL:
    - MATING (BLADE/PIN) SHALL CONFORM TO EWCAP-001 REV. B
    - RECEPTACLE CRIMPED LEAD MUST BE USED WITH MATCHING PLATING TYPE ON MALE TERMINAL
  - WIRE SHALL MEET THE FOLLOWING SPECIFICATIONS:
    - SAE: ESB-MIL123-A  
WSS-MIL123-A1  
SAE J1128 WITH OUTSIDE DIAMETER OF 1.47mm MINIMUM - 2.06mm MAXIMUM
    - METRIC: WSK-MIL126-A1
  - WIRE CONDITION AFTER CRIMP:
    - CRIMPED TERMINAL LEAD MUST BE ABLE TO PASS FREELY THROUGH THE CHECKING AD SHOWN ON SHEET 3
    - WIRE SURFACE MUST BE FREE OF SCRATCHES, GROVES OR DENTS
  - TOOLING:
    - FOR HAND CRIMPED TOOLING REFER 63811-4200
    - FOR APPLICATOR TOOLING REFER TO APPLICATOR TOOLING INFORMATION OR SUPPLIER APPLICATOR TOOLING TABLE

### APPLICATOR TOOLING INFORMATION

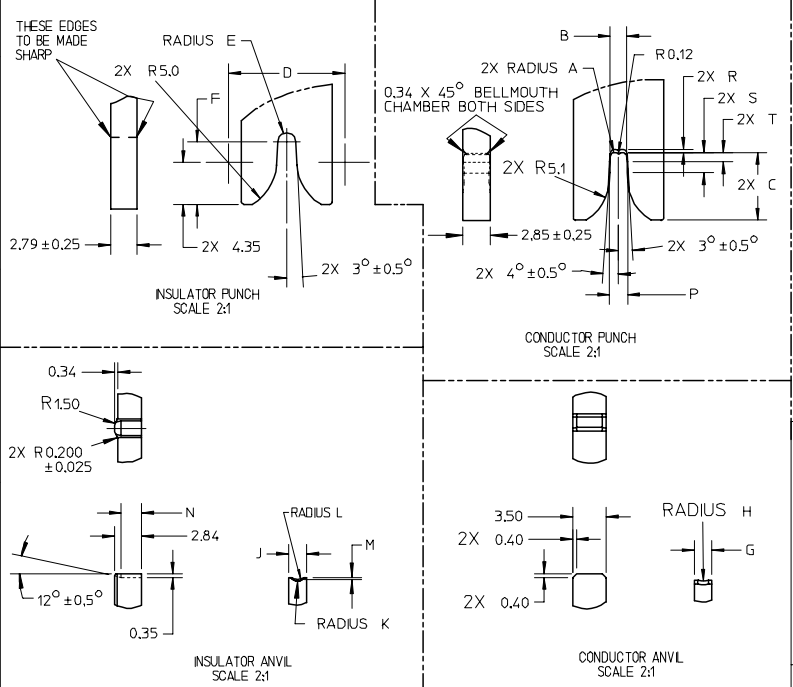


APPLICATOR TOOLING TOLERANCE TABLE	
3 PLACE	±0.005
2 PLACE	±0.025
1 PLACE	±0.13
ANGULAR	±0.5°



(4.2) WIRE STRIP LENGTH

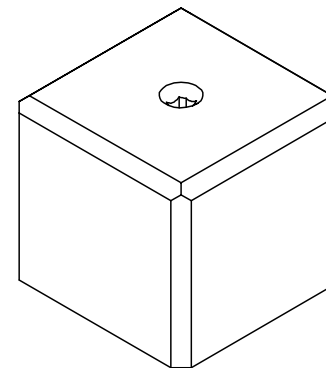
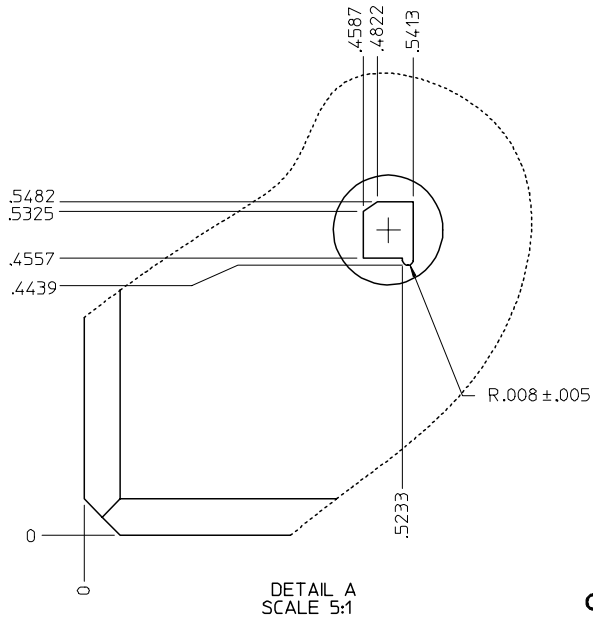
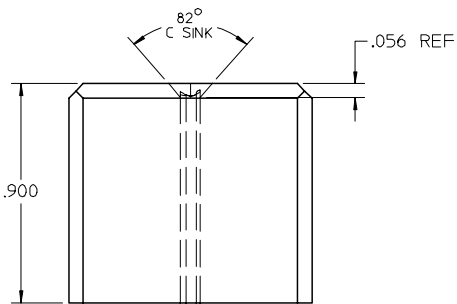
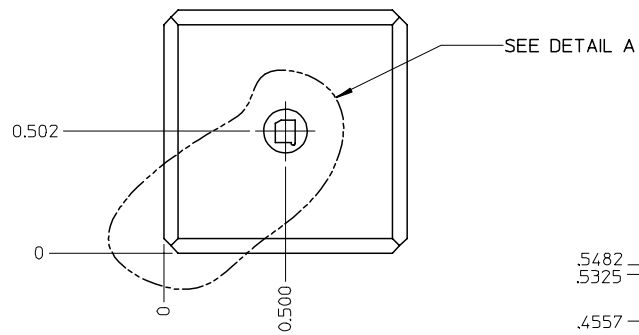
**THIS SHEET APPLIES TO RECEPTACLE CRIMPED LEAD ONLY**



ENTER DESCRIPTION EC NO: UAU2007-0559 IDRWINDHEMANI 2007/04/12 CHKDDJ.HEMNANI 2007/04/13 APPR:BMOSER 2007/04/13	QUALITY SYMBOLS =0 =0	GENERAL TOLERANCES (UNLESS SPECIFIED)		DIMENSION STYLE MM ONLY		SCALE	DESIGN UNITS	THIRD ANGLE PROJECTION		
		mm	INCH	DRAWN BY	DATE	SCALE	METRIC	TITLE		
G	DESCRIPTION	4 PLACES	± ---	± ---	L. PULLIAM	2/3/2006	5:1	METRIC	MX64 RECEPTACLE TERMINAL	
		3 PLACES	± ---	± ---	CHECKED BY	DATE				
		2 PLACES	± 0.10	± ---	D. HEMNANI	2/3/2006			MOLEX INCORPORATED	
		1 PLACE	± 0.3	± ---	APPROVED BY	DATE				
		ANGULAR ± 3°			B. MOSER	2/3/2006			SD-33468-001	
		MATERIAL NO. SEE TABLE		DOCUMENT NO. SD-33468-001		SHEET NO. 2 OF 3				
		THIS DRAWING CONTAINS INFORMATION THAT IS PROPRIETARY TO MOLEX INCORPORATED AND SHOULD NOT BE USED WITHOUT WRITTEN PERMISSION								

10 9 8 7 6 5 4 3 2 1

SUPPLIER CHECKING AID TOOLING	
PART NUMBER	DESCRIPTION
63867-3008	MX64 CRIMPED LEAD STRAIGHTNESS CHECKING AID FOR 18 AWG, 20 AWG AND 22 AWG



- NOTES: (UNLESS OTHERWISE SPECIFIED)
- MATERIAL: STEEL 4140 PREHARDENED
  - FINISH:
    - 2.1 SURFACE: BLACK OXIDE
    - 2.2 INSIDE PROFILE: POLISH
  - ALL DIMENSIONS ON THIS SHEET ARE IN INCHES
  - TOLERANCES ON THIS SHEET ARE IN INCHES
    - 2 PLACES ± .01
    - 3 PLACES ± .005
    - 4 PLACES ± .0002

**CRIMPED LEAD STRAIGHTNESS CHECKING AID FOR 18 AWG, 20 AWG AND 22 AWG**

**THIS SHEET APPLIES TO RECEPTACLE CRIMPED LEAD ONLY**

ENTER DESCRIPTION EC NO: UAU2007-0559 G DRWD:HEMNI 2007/04/12 CHKDD:HEMNI 2007/04/13 APPR:BMOSER 2007/04/13	QUALITY SYMBOLS	GENERAL TOLERANCES (UNLESS SPECIFIED)	DIMENSION STYLE	SCALE	DESIGN UNITS	THIRD ANGLE PROJECTION
	▽=0 ▽=0	mm	MM ONLY	2:1	METRIC	TITLE MX64 RECEPTACLE TERMINAL MOLEX MOLEX INCORPORATED
		INCH	4 PLACES ± --- ± ---	DRAWN BY	DATE	
		3 PLACES ± --- ± ---	L. PULLIAM	2/3/2006		
2 PLACES ± 0.10 ± ---	2 PLACES ± 0.10 ± ---	CHECKED BY	DATE	TITLE		
1 PLACE ± 0.3 ± ---	1 PLACE ± 0.3 ± ---	D. HEMNANI	2/3/2006			
	ANGULAR ± 3 °	ANGULAR ± 3 °	APPROVED BY	DATE		
			B. MOSER	2/3/2006		
			MATERIAL NO.	DOCUMENT NO.	SHEET NO.	
			SEE TABLE	SD-33468-001	3 OF 3	
			SIZE	THIS DRAWING CONTAINS INFORMATION THAT IS PROPRIETARY TO MOLEX INCORPORATED AND SHOULD NOT BE USED WITHOUT WRITTEN PERMISSION		
			B			

9 8 7 6 5 4 3 2 1