

**PLEASE CHECK WWW.MOLEX.COM FOR LATEST PART INFORMATION**

**Part Number:** [0050361882](#)  
**Status:** **Active**  
**Overview:** [minifit\\_jr](#)  
**Description:** 4.20mm (.165") Pitch Mini-Fit Jr.™ Header, Dual Row, Vertical, without Snap-in Plastic Peg PCB Lock, without Drain Holes, 2 Circuits, PA Polyamide Nylon 6/6, UL 94V-0, Tin (Sn) Over Nickel (Ni) Plating, Glow Wire Compatible

**Documents:**

[3D Model](#) [RoHS Certificate of Compliance \(PDF\)](#)  
[Drawing \(PDF\)](#)

**Agency Certification**

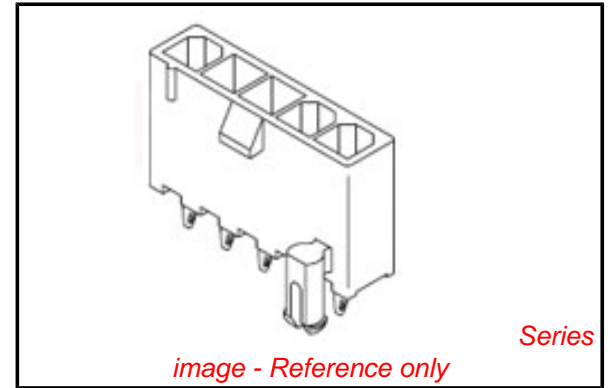
|     |           |
|-----|-----------|
| CSA | LR19980   |
| TUV | R72081037 |
| UL  | E29179    |

**General**

|                |  |
|----------------|--|
| Product Family | PCB Headers  |
| Series         | <a href="#">5566</a>   |
| Application    | Wire-to-Board  |
| Comments       | Current = 13A max. per circuit when header is mated to a receptacle loaded with <a href="#">45750</a> Mini-Fit Plus HCS™ Crimp Terminal Crimped to to 16 AWG wire. . See Molex product specification PS-45750-001 for additional current de-rating information.. High Temperature, Square Pin, Solder Type |
| Overview       | <a href="#">minifit_jr</a>   |
| Product Name   | Mini-Fit Jr.™  |

**Physical**

|                                |          |
|--------------------------------|----------|
| Breakaway                      | No       |
| Circuits (Loaded)              | 2        |
| Circuits (maximum)             | 2        |
| Color - Resin                  | Black    |
| Durability (mating cycles max) | 30       |
| First Mate / Last Break        | No       |
| Flammability                   | 94V-0    |
| Glow-Wire Compliant            | Yes      |
| Guide to Mating Part           | No       |
| Keying to Mating Part          | None     |
| Lock to Mating Part            | Yes      |
| Material - Metal               | Brass    |
| Material - Plating Mating      | Tin      |
| Material - Plating Termination | Tin      |
| Material - Resin               | Nylon    |
| Number of Rows                 | 2        |
| Orientation                    | Vertical |
| PC Tail Length (in)            | 0.138 In |
| PC Tail Length (mm)            | 3.50 mm  |
| PCB Locator                    | Yes      |
| PCB Retention                  | Yes      |
| PCB Thickness Recommended (in) | 0.062 In |
| PCB Thickness Recommended (mm) | 1.60 mm  |
| Packaging Type                 | Tray     |
| Pitch - Mating Interface (in)  | 0.165 In |
| Pitch - Mating Interface (mm)  | 4.20 mm  |



**EU RoHS**

**ELV and RoHS Compliant**  
**REACH SVHC Contains SVHC: No**  
**Halogen-Free Status**

**China RoHS**



**Need more information on product environmental compliance?**

Email [productcompliance@molex.com](mailto:productcompliance@molex.com)  
 For a multiple part number RoHS Certificate of Compliance, [click here](#)

Please visit the [Contact Us](#) section for any non-product compliance questions.

**Search Parts in this Series**

[5566Series](#)

**Mates With**

[5557](#) Mini-Fit Jr.™ Receptacle Housing

|                                |                 |
|--------------------------------|-----------------|
| Pitch - Term. Interface (in)   | 0.165 In        |
| Pitch - Term. Interface (mm)   | 4.20 mm         |
| Plating min: Mating (µin)      | 100             |
| Plating min: Mating (µm)       | 2.54            |
| Plating min: Termination (µin) | 50              |
| Plating min: Termination (µm)  | 1.27            |
| Polarized to Mating Part       | Yes             |
| Polarized to PCB               | Yes             |
| Shrouded                       | Fully           |
| Stackable                      | No              |
| Surface Mount Compatible (SMC) | No              |
| Temperature Range - Operating  | -40°C to +105°C |
| Termination Interface: Style   | Through Hole    |

### **Electrical**

|                               |      |
|-------------------------------|------|
| Current - Maximum per Contact | 13A  |
| Voltage - Maximum             | 600V |

### **Solder Process Data**

|  |                        |
|--|------------------------|
| Duration at Max. Process Temperature (seconds) | 5                      |
| Lead-free Process Capability                   | Wave Capable (TH only) |
| Max. Cycles at Max. Process Temperature        | 1                      |
| Process Temperature max. C                     | 260                    |

### **Material Info**

|                 |               |
|-----------------|---------------|
| Old Part Number | 5566-02AS-225 |
|-----------------|---------------|

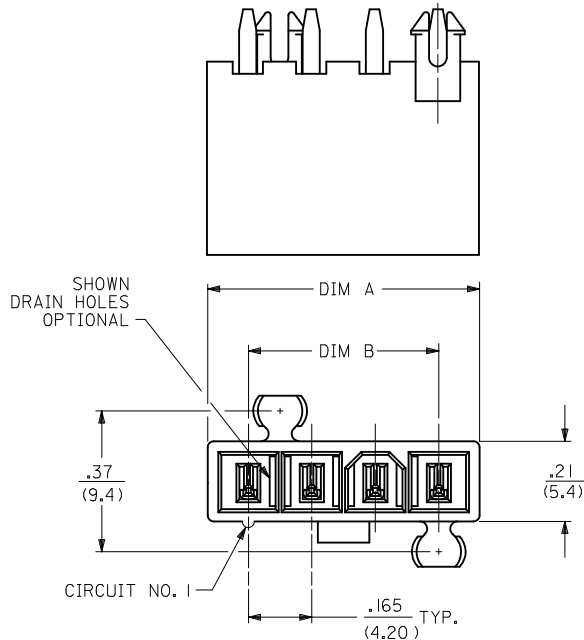
### **Reference - Drawing Numbers**

|                         |             |
|-------------------------|-------------|
| Packaging Specification | PK-5566-001 |
| Sales Drawing           | SD-5566-225 |

This document was generated on 05/21/2010

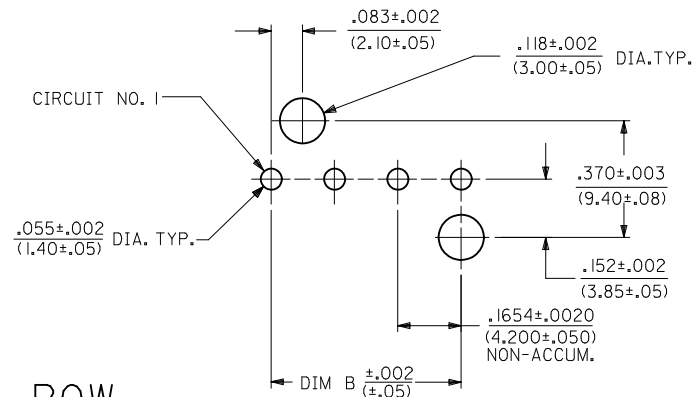
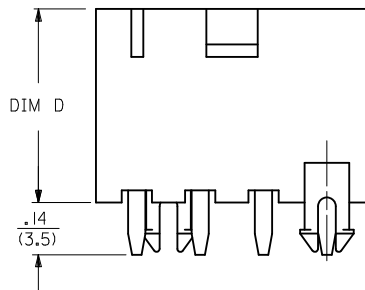
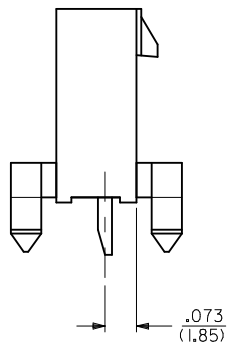
**PLEASE CHECK [WWW.MOLEX.COM](http://WWW.MOLEX.COM) FOR LATEST PART INFORMATION**

| CKT SIZE | DIM A         | DIM B           | DIM D         |
|----------|---------------|-----------------|---------------|
| 3        | .54<br>(13.8) | .331<br>(8.40)  | .49<br>(12.5) |
| 4        | .71<br>(18.0) | .496<br>(12.60) | .50<br>(12.8) |
| 5        | .87<br>(22.2) | .661<br>(16.80) | .50<br>(12.8) |



NOTES:

- MATERIALS:  
HOUSING:  
\*225\*=NYLON (PA6), UL94 V-0, COLOR: BLACK, IEC 60335-1, 4th EDITION GLOW WIRE CAPABLE  
\*225N\*=NYLON (PA6), UL94V-0, COLOR: WHITE, IEC 60335-1, 4th EDITION GLOW WIRE CAPABLE  
TERMINALS:  
BRASS  
2. TERMINAL PLATING:  
\*S\*=.000100/(0.00254) MIN. BRIGHT TIN OVER  
.000050/(0.00127) MIN. NICKEL  
3. PRODUCT SPECIFICATION: PS-5556-001  
4. PACKAGING: SEE CHARTS  
5. PART MATES WITH MINI-FIT JR. RECEPTACLE NO. 5557.  
6. MOUNTING OPTIONS:  
\*BLANK\*=DUAL ROW WITHOUT PEGS  
\*2\*=DUAL ROW WITH MOUNTING PEGS  
\*3\*=SINGLE ROW WITH MOUNTING PEGS  
7. PART IS NOT DESIGNED FOR CURRENT SHARING.  
8. PARTS ARE NOT DESIGNED TO BE MATED OR UN-MATED WHILE CIRCUITS ARE LIVE.  
9. LOCATION OF .118±.002/(3.00±0.05) DIAMETER HOLES ON P.C. BOARD IS FOR OPTIONAL PEGS.  
10. ANTI-SHINGLING RIB MAY OR MAY NOT APPEAR ON HOUSINGS.  
11. PART CONFORMS TO CLASS "B" REQUIREMENTS OF COSMETIC SPECIFICATION PS-45499-002 WITH THE EXCEPTION OF DISCOLORATION, FLASH AND SINK ON THE HOUSING MEET CLASS "C" REQUIREMENTS.



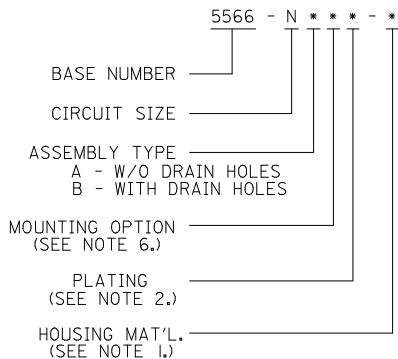
RECOMMENDED HOLE LAYOUT FOR  
.070/(1.78) MAX. THICK P. C. BOARD  
VIEWED FROM COMPONENT SIDE

|     |     |
|-----|-----|
| 4   | A2  |
| 3   | A2  |
| 2   | A   |
| 1   | A2  |
| SHT | REV |

SEE SHT. 2 FOR DUAL ROW

\* THE CHART FOR SINGLE ROW PRODUCT IS ON PAGE 3

LEGEND:



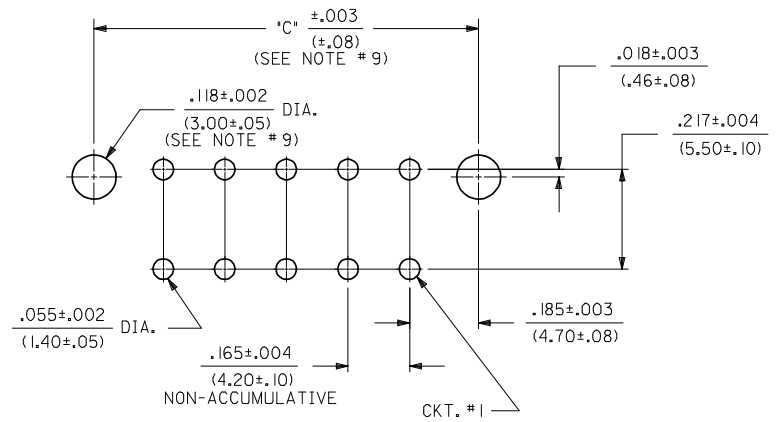
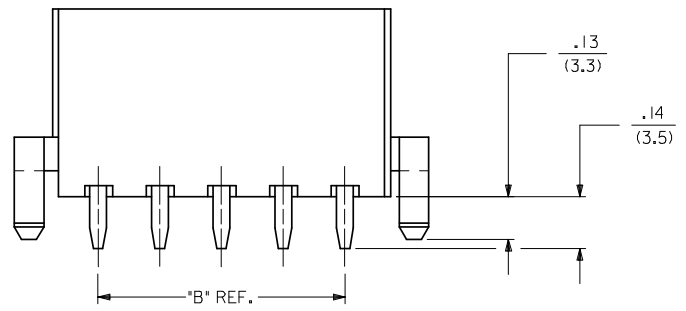
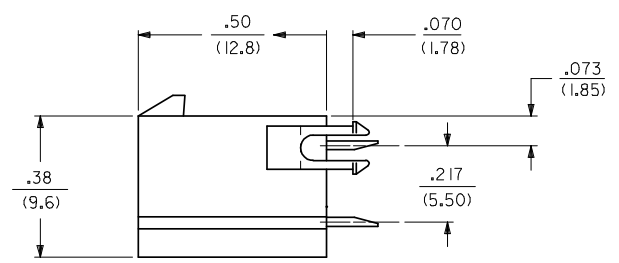
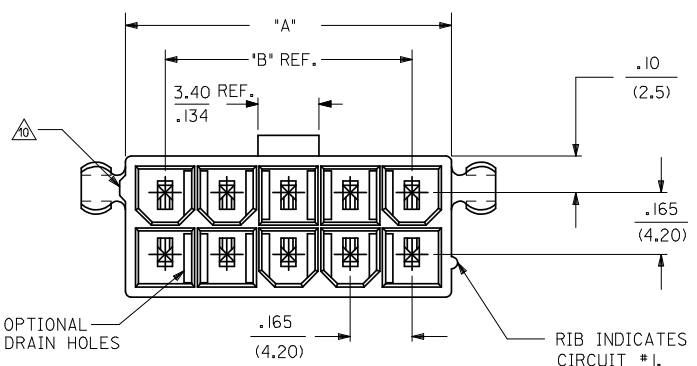
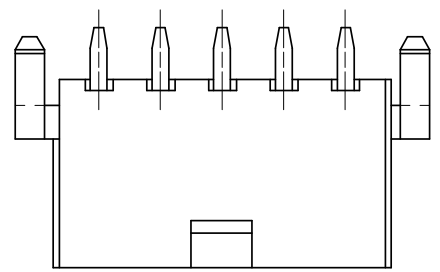
| ADD PART NUMBERS    | DESCRIPTION | QUALITY SYMBOLS |
|---------------------|-------------|-----------------|
| EC NO: UCP2009-1099 | 2009/02/12  | ▽=0             |
| DRWN:TBENES         | 2008/01/24  | ▽=0             |
| CHKD:JBELL          | 2010/04/09  |                 |
| APPR:FSMITH         |             |                 |
| REV                 |             |                 |

| GENERAL TOLERANCES (UNLESS SPECIFIED)                |         |
|--|---------|
| mm   | INCH    |
| 4 PLACES ± .005                                      | ± .0005 |
| 3 PLACES ± .010                                      | ± .0010 |
| 2 PLACES ± .020                                      | ± .0020 |
| 1 PLACE ± .050                                       | ± .0050 |
| ANGULAR ±1/2°  |         |
| DRAFT WHERE APPLICABLE MUST REMAIN WITHIN DIMENSIONS |         |

| DIMENSION STYLE |            |
|-----------------|------------|
| IN/MM           |            |
| DRAWN BY        | DATE       |
| LSCHMIDT        | 2008/01/22 |
| CHECKED BY      | DATE       |
| ADERR           | 2008/01/24 |
| APPROVED BY     | DATE       |
| FSMITH          | 2010/04/09 |
| MATERIAL NO.    |            |
| SEE CHARTS      |            |
| SIZE            |            |
| C               |            |

| SCALE   | DESIGN UNITS | THIRD ANGLE PROJECTION |
|---|--------------|------------------------|
| 1:1   | METRIC       | ☉                      |
| TITLE   |              |                        |
| MINI-FIT VERT HDR ASSY<br>W & W/O PEGS/DRAIN HOLES<br>SINGLE AND DUAL ROW   |              |                        |
| MOLEX INCORPORATED  |              |                        |
| MATERIAL NO.  | DOCUMENT NO. | SHEET NO.              |
| SD-5566-225   |              | 1 OF 4                 |
| THIS DRAWING CONTAINS INFORMATION THAT IS PROPRIETARY TO MOLEX INCORPORATED AND SHOULD NOT BE USED WITHOUT WRITTEN PERMISSION |              |                        |

| CIRCUIT SIZE | DIM. "A"       | DIM. "B"       | DIM. "C"         |
|--------------|----------------|----------------|------------------|
| 2            | .21<br>(5.4)   | —              | .370<br>(9.40)   |
| 4            | .38<br>(9.6)   | .17<br>(4.2)   | .535<br>(13.60)  |
| 6            | .54<br>(13.8)  | .33<br>(8.4)   | .701<br>(17.80)  |
| 8            | .71<br>(18.0)  | .50<br>(12.6)  | .866<br>(22.00)  |
| 10           | .87<br>(22.2)  | .66<br>(16.8)  | 1.031<br>(26.20) |
| 12           | 1.04<br>(26.4) | .83<br>(21.0)  | 1.197<br>(30.40) |
| 14           | 1.20<br>(30.6) | .99<br>(25.2)  | 1.362<br>(34.60) |
| 16           | 1.37<br>(34.8) | 1.16<br>(29.4) | 1.528<br>(38.80) |
| 18           | 1.54<br>(39.0) | 1.32<br>(33.6) | 1.693<br>(43.00) |
| 20           | 1.70<br>(43.2) | 1.49<br>(37.8) | 1.858<br>(47.20) |
| 22           | 1.87<br>(47.4) | 1.65<br>(42.0) | 2.024<br>(51.40) |
| 24           | 2.03<br>(51.6) | 1.82<br>(46.2) | 2.189<br>(55.60) |



RECOMMENDED HOLE LAYOUT FOR .070/(1.78) MAX. THICK P. C. BOARD  
VIEWED FROM COMPONENT SIDE

SEE SHT. 1 FOR SINGLE ROW  
\* THE CHART FOR DUAL ROW PRODUCT IS ON PAGE 4

|   |  |                               |  |  |  |   |                     |
|---|--|-------------------------------|--|--|--|---|---------------------|
| RELEASED<br>EC NO: UCP2007-3159<br>DRAWN: SCHMIDT 2008/02/08<br>CHKD: ADERR 2008/02/08<br>APPR: FSM/TH 2008/02/12 | DESCRIPTION<br>REV   | QUALITY SYMBOLS<br>▽=0<br>▽=0 | GENERAL TOLERANCES (UNLESS SPECIFIED)<br>mm INCH<br>4 PLACES ±--- ±---<br>3 PLACES ±--- ±.015<br>2 PLACES ±0.38 ±.020<br>1 PLACE ±0.50 ±---<br>ANGULAR ±1/2° | DIMENSION STYLE<br>IN/MM<br>DRAWN BY DATE<br>LSCHMIDT 2008/01/22<br>CHECKED BY DATE<br>ADERR 2008/01/24<br>APPROVED BY DATE<br>FSM THROEMER 2008/01/25 | SCALE<br>4:1<br>DESIGN UNITS<br>METRIC<br>THIRD ANGLE PROJECTION | TITLE<br>MINI-FIT VERT HDR ASSY<br>W & W/O PEGS/DRAIN HOLES<br>SINGLE AND DUAL ROW<br>MOLEX INCORPORATED<br>DOCUMENT NO.<br>SD-5566-225 | SHEET NO.<br>2 OF 4 |
|   | DRAFT WHERE APPLICABLE<br>MUST REMAIN<br>WITHIN DIMENSIONS |                               |  | SEE CHARTS   |  | THIS DRAWING CONTAINS INFORMATION THAT IS PROPRIETARY TO MOLEX<br>INCORPORATED AND SHOULD NOT BE USED WITHOUT WRITTEN PERMISSION        |                     |
|   | A  |                               |  | C  |  | A   |                     |
|   | A  |                               |  | C  |  | A   |                     |

| 13           | 12            | 11                              | 10 | 9            | 8              | 7                               | 6 | 5            | 4        | 3            | 2 | 1        |          |      |
|--------------|---------------|---------------------------------|----|--------------|----------------|---------------------------------|---|--------------|----------|--------------|---|----------|----------|------|
| PLATING:     |               | 100 M.I. TIN - PLATING CODE 'S' |    | PLATING:     |                | 100 M.I. TIN - PLATING CODE 'S' |   | PLATING:     |          | PLATING:     |   |          |          |      |
| DRAIN HOLES: |               | WITHOUT DRAIN HOLES             |    | DRAIN HOLES: |                | WITHOUT DRAIN HOLES             |   | DRAIN HOLES: |          | DRAIN HOLES: |   |          |          |      |
| MTG. OPTION: |               | WITHOUT PEGS                    |    | MTG. OPTION: |                | WITH PEGS                       |   | MTG. OPTION: |          | MTG. OPTION: |   |          |          |      |
| PACKAGING:   |               | TRAY PACK PER PK-5566-001       |    | PACKAGING:   |                | TRAY PACK PER PK-5566-001       |   | PACKAGING:   |          | PACKAGING:   |   |          |          |      |
| COLOR:       |               | BLACK                           |    | COLOR:       |                | BLACK                           |   | COLOR:       |          | COLOR:       |   |          |          |      |
| PART NO.     | ENG. NO.      | CKTS                            |    | PART NO.     | ENG. NO.       | CKTS                            |   | PART NO.     | ENG. NO. | CKTS         |   | PART NO. | ENG. NO. | CKTS |
| 50-36-1882   | 5566-02AS-225 | 2                               |    | 50-36-1699   | 5566-02A2S-225 | 2                               |   |              |          | 2            |   |          |          | 2    |
| 50-36-1884   | 5566-04AS-225 | 4                               |    | 50-36-1702   | 5566-04A2S-225 | 4                               |   |              |          | 4            |   |          |          | 4    |
| 50-36-1697   | 5566-06AS-225 | 6                               |    | 50-36-1704   | 5566-06A2S-225 | 6                               |   |              |          | 6            |   |          |          | 6    |
| 50-36-1683   | 5566-08AS-225 | 8                               |    | 50-36-1706   | 5566-08A2S-225 | 8                               |   |              |          | 8            |   |          |          | 8    |
| 50-36-1741   | 5566-10AS-225 | 10                              |    | 50-36-1708   | 5566-10A2S-225 | 10                              |   |              |          | 10           |   |          |          | 10   |
| 50-36-1886   | 5566-12AS-225 | 12                              |    | 50-36-1711   | 5566-12A2S-225 | 12                              |   |              |          | 12           |   |          |          | 12   |
| 50-36-1888   | 5566-14AS-225 | 14                              |    | NOT TOOLED   | 5566-14A2S-225 | 14                              |   |              |          | 14           |   |          |          | 14   |
| 50-36-1891   | 5566-16AS-225 | 16                              |    | NOT TOOLED   | 5566-16A2S-225 | 16                              |   |              |          | 16           |   |          |          | 16   |
| NOT TOOLED   | 5566-18AS-225 | 18                              |    | NOT TOOLED   | 5566-18A2S-225 | 18                              |   |              |          | 18           |   |          |          | 18   |
| NOT TOOLED   | 5566-20AS-225 | 20                              |    | NOT TOOLED   | 5566-20A2S-225 | 20                              |   |              |          | 20           |   |          |          | 20   |
| NOT TOOLED   | 5566-22AS-225 | 22                              |    | NOT TOOLED   | 5566-22A2S-225 | 22                              |   |              |          | 22           |   |          |          | 22   |
| NOT TOOLED   | 5566-24AS-225 | 24                              |    | NOT TOOLED   | 5566-24A2S-225 | 24                              |   |              |          | 24           |   |          |          | 24   |
|              | -             |                                 |    |              | -              |                                 |   |              |          |              |   |          |          |      |
|              | -             |                                 |    |              | -              |                                 |   |              |          |              |   |          |          |      |

|   |  |  |  |  |  |  |  |  |  |  |  |  |
|---|--|--|--|--|--|--|--|--|--|--|--|--|
| G |  |  |  |  |  |  |  |  |  |  |  |  |
|---|--|--|--|--|--|--|--|--|--|--|--|--|

|              |                 |                                 |  |
|--------------|-----------------|---------------------------------|--|
| PLATING:     |                 | 100 M.I. TIN - PLATING CODE 'S' |  |
| DRAIN HOLES: |                 | WITHOUT DRAIN HOLES             |  |
| MTG. OPTION: |                 | WITH PEGS                       |  |
| PACKAGING:   |                 | TRAY PACK PER PK-5566-001       |  |
| COLOR:       |                 | WHITE                           |  |
| PART NO.     | ENG. NO.        | CKTS                            |  |
|              |                 | 2                               |  |
| 50-36-2304   | 5566-04A2S-225N | 4                               |  |
|              |                 | 6                               |  |
|              |                 | 8                               |  |
|              |                 | 10                              |  |
|              |                 | 12                              |  |
|              |                 | 14                              |  |
|              |                 | 16                              |  |
|              |                 | 18                              |  |
|              |                 | 20                              |  |
|              |                 | 22                              |  |
|              |                 | 24                              |  |

|   |  |  |  |  |  |  |  |  |  |  |  |  |
|---|--|--|--|--|--|--|--|--|--|--|--|--|
| C |  |  |  |  |  |  |  |  |  |  |  |  |
|---|--|--|--|--|--|--|--|--|--|--|--|--|

|   |  |  |  |  |  |  |  |  |  |  |  |  |
|---|--|--|--|--|--|--|--|--|--|--|--|--|
| B |  |  |  |  |  |  |  |  |  |  |  |  |
|---|--|--|--|--|--|--|--|--|--|--|--|--|

|   |  |  |  |  |  |  |  |  |  |  |  |  |
|---|--|--|--|--|--|--|--|--|--|--|--|--|
| A |  |  |  |  |  |  |  |  |  |  |  |  |
|---|--|--|--|--|--|--|--|--|--|--|--|--|

| <b>SEE SHEET 1</b><br>EC NO: UCP2009-1099<br>DRWN: RBENES 2009/02/12<br>CHKD: J.BELL 2011/01/24<br>APPR: FSMITH 2010/04/09<br>DESCRIPTION | QUALITY SYMBOLS<br>=0<br>=0 | GENERAL TOLERANCES (UNLESS SPECIFIED)<br><table border="1"> <tr> <th></th> <th>mm</th> <th>INCH</th> </tr> <tr> <td>4 PLACES</td> <td>± .005</td> <td>± .0002</td> </tr> <tr> <td>3 PLACES</td> <td>± .005</td> <td>± .0002</td> </tr> <tr> <td>2 PLACES</td> <td>± .005</td> <td>± .0002</td> </tr> <tr> <td>1 PLACE</td> <td>± .005</td> <td>± .0002</td> </tr> </table> |                                       | mm  | INCH                               | 4 PLACES                   | ± .005 | ± .0002 | 3 PLACES | ± .005 | ± .0002 | 2 PLACES | ± .005 | ± .0002 | 1 PLACE | ± .005 | ± .0002 | DIMENSION STYLE<br><b>IN/MM</b> | SCALE<br><b>1:1</b> | DESIGN UNITS<br><b>METRIC</b> | <b>THIRD ANGLE PROJECTION</b> |
|---|-----------------------------|--|---------------------------------------|---|------------------------------------|----------------------------|--------|---------|----------|--------|---------|----------|--------|---------|---------|--------|---------|---------------------------------|---------------------|-------------------------------|-------------------------------|
|   |                             | mm   | INCH                                  |   |                                    |                            |        |         |          |        |         |          |        |         |         |        |         |                                 |                     |                               |                               |
|   | 4 PLACES                    | ± .005   | ± .0002                               |   |                                    |                            |        |         |          |        |         |          |        |         |         |        |         |                                 |                     |                               |                               |
|   | 3 PLACES                    | ± .005   | ± .0002                               |   |                                    |                            |        |         |          |        |         |          |        |         |         |        |         |                                 |                     |                               |                               |
| 2 PLACES  | ± .005                      | ± .0002  |                                       |   |                                    |                            |        |         |          |        |         |          |        |         |         |        |         |                                 |                     |                               |                               |
| 1 PLACE   | ± .005                      | ± .0002  |                                       |   |                                    |                            |        |         |          |        |         |          |        |         |         |        |         |                                 |                     |                               |                               |
|   |                             |  | DRAWN BY DATE<br>LSCHMIDT 2008/01/22  | TITLE<br><b>MINI-FIT VERT HDR ASSY<br/>         W &amp; W/O PEGS/DRAIN HOLES<br/>         SINGLE AND DUAL ROW</b> |                                    |                            |        |         |          |        |         |          |        |         |         |        |         |                                 |                     |                               |                               |
|   |                             |  | CHECKED BY DATE<br>ADERR 2001/01/24   | <b>MOLEX INCORPORATED</b>   |                                    |                            |        |         |          |        |         |          |        |         |         |        |         |                                 |                     |                               |                               |
|   |                             |  | APPROVED BY DATE<br>FSMITH 2010/04/09 | MATERIAL NO.<br><b>SEE CHART</b>  | DOCUMENT NO.<br><b>SD-5566-225</b> | SHEET NO.<br><b>4 OF 4</b> |        |         |          |        |         |          |        |         |         |        |         |                                 |                     |                               |                               |

|    |    |    |   |   |   |   |   |   |   |   |   |
|----|----|----|---|---|---|---|---|---|---|---|---|
| 12 | 11 | 10 | 9 | 8 | 7 | 6 | 5 | 4 | 3 | 2 | 1 |
|----|----|----|---|---|---|---|---|---|---|---|---|