

Monolithic crystal filter

MQF21.4-0750/25



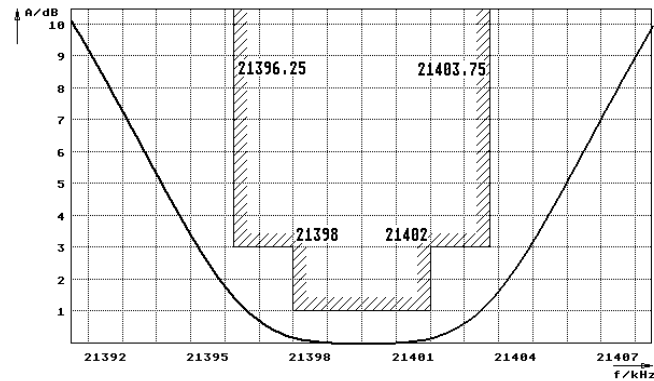
Application

- 2 pol filter
- i.f.- filter
- use in mobile and stationary transceivers

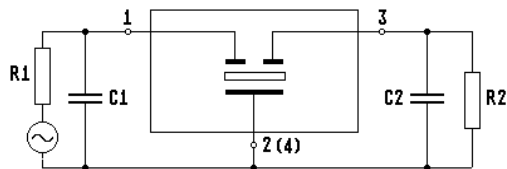
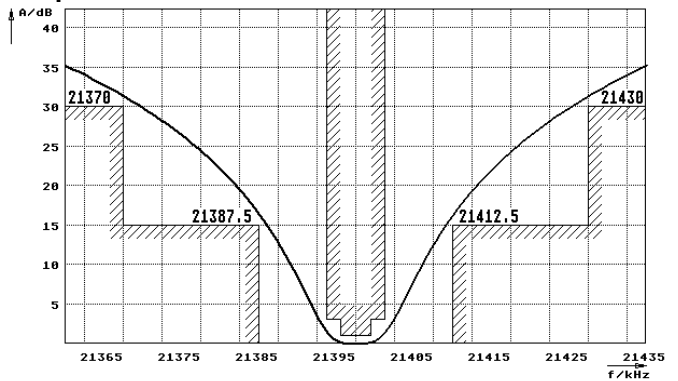
Limiting values		Unit	Value
Nominal frequency	f_0	MHz	21.4
Insertion loss		dB	< 1.5
Pass band at 3.0dB		kHz	$\pm > 3.75$
Ripple in pass band	$f_0 \pm 2 \text{ kHz}$	dB	< 1.0
Stop band attenuation	$f_0 \pm 12.5 \text{ kHz}$	dB	> 15
	$f_0 \pm 30 \text{ kHz}$	dB	> 30
Alternate attenuation	$f_0 \pm 100...500 \text{ kHz}$	dB	> 40
Spurious response		dB	> 15
Terminating impedance Z			
R1 C1		Ohm/pF	850 6
R2 C2		Ohm/pF	850 6
Operating temp. range		°C	-20... +70
Storage temp. range		°C	-45... +85
Environment conditions			according to CF001

Characteristics MQF21.4-0750/25

Pass band



Stop band



- Pin connections:
- 1 Input
 - 2 Ground-Input
 - 3 Output
 - 4 Ground-Output

