

Monolithic crystal filter

MQF45.0-0750/12



Application

- 2 pol filter
- i.f.- filter
- use in mobile and stationary transceivers

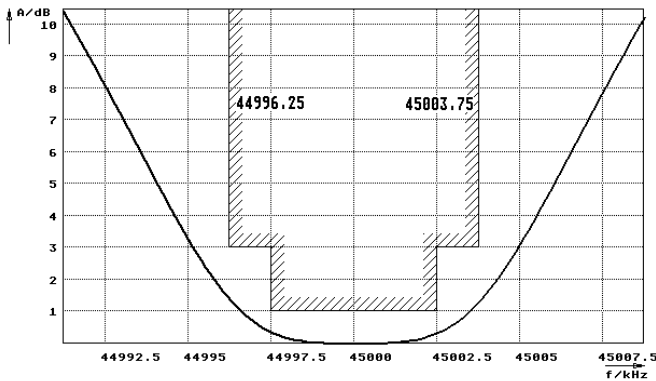
Limiting values		Unit	Value
Center frequency	f_0	MHz	45.0
Insertion loss		dB	≤ 2.0
Pass band at 3.0 dB		kHz	$\pm \geq 3.75$
Ripple in pass band	$f_0 \pm 2.50$ kHz	dB	≤ 1.0
Stop band attenuation	$f_0 \pm 12.5$ kHz	dB	≥ 15
Alternate attenuation	$f_0 - 100$ kHz	dB	> 45
	$f_0 + 500$ kHz	dB	> 45 except spurious
	$f_0 \pm 910$ kHz	dB	> 70 except spurious
Spurious responses		dB	≥ 15

Terminating impedance Z			
R1 C1		Ohm/pF	350 11
R2 C2		Ohm/pF	350 11

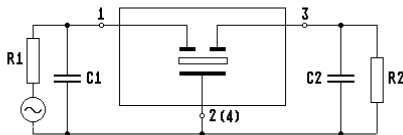
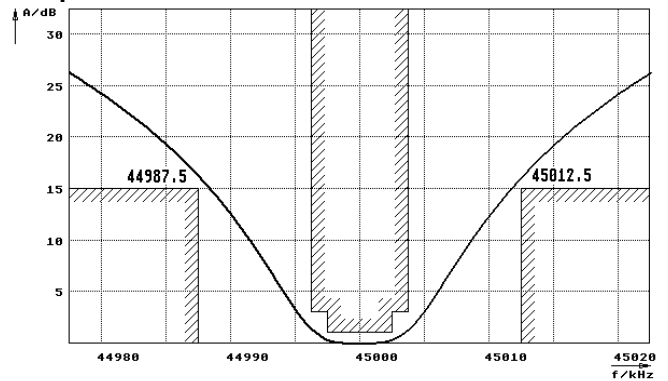
Operating temp. range		°C	-20... +70
-----------------------	--	----	------------

Characteristics MQF45.0-0750/12

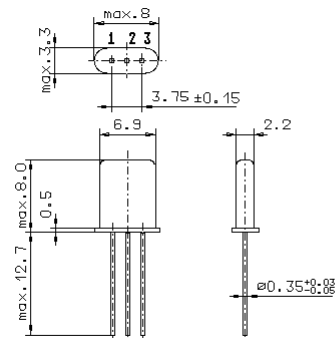
Pass band



Stop band



- Pin connections:
- 1 Input
 - 2 Ground-Input
 - 3 Output
 - 4 Ground-Output



GH9