

PLEASE CHECK WWW.MOLEX.COM FOR LATEST PART INFORMATION

Part Number: [0472710005](#)
Status: **Active**
Overview: [displayport](#)
Description: Lower Cover for DisplayPort* Cable Plug, Black, UL94V-0

Documents:

[Drawing \(PDF\)](#) [RoHS Certificate of Compliance \(PDF\)](#)

General

Product Family	Accessories
Series	47271
Component Type	Cover
MolexKits	Yes
Overview	displayport
Product Name	DisplayPort*

Physical

Breakaway	No
Circuits (Loaded)	N/A
Circuits (maximum)	0
Color - Resin	Black
Gender	N/A
Lock to Mating Part	Yes
Material - Resin	ABS Alloy
Number of Rows	0
Packaging Type	Bag
Polarized to Mating Part	Yes
Temperature Range - Operating	-20°C to +85°C

Electrical

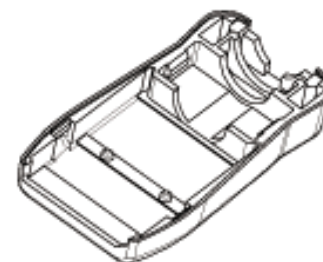
Current - Maximum per Contact	0.5A
-------------------------------	------

Material Info

Reference - Drawing Numbers

Sales Drawing	SD-47271-005
---------------	--------------

DisplayPort* is a Trademark of VESA



Series

image - Reference only

EU RoHS

**ELV and RoHS
Compliant**

REACH SVHC

Not Reviewed

Halogen-Free

Status

Halogen-Free

China RoHS



**Need more information on product
environmental compliance?**

Email productcompliance@molex.com
 For a multiple part number RoHS Certificate of
 Compliance, [click here](#)

Please visit the [Contact Us](#) section for any
 non-product compliance questions.

Search Parts in this Series

[47271Series](#)

10 9 8 7 6 5 4 3 2 1

F

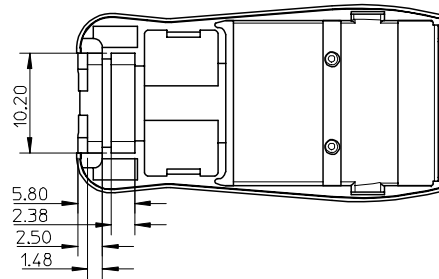
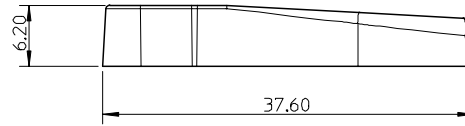
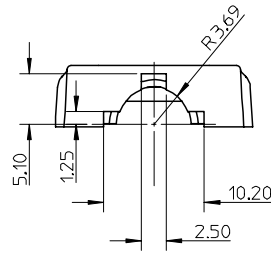
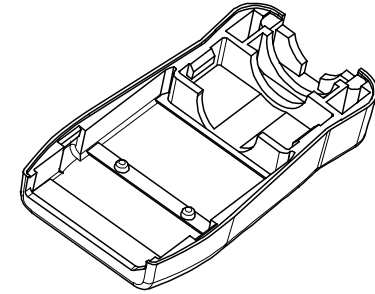
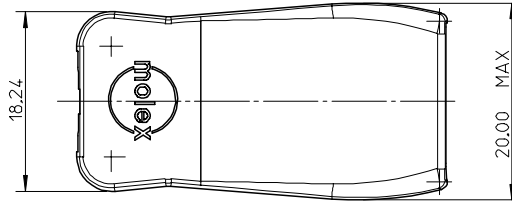
E

D

C

B

A



NOTES:
MATERIAL : HGH TEMPERATURE THERMAL PLASTIC, UL94V-0, BLACK.

NEW RELEASE EC NO: SH2007-0705 DRWN:HHE 2007/04/27 CHKD:HWANG 2007/04/30 APPR: JNCHEN 2007/05/10	REV DESCRIPTION A	QUALITY SYMBOLS	GENERAL TOLERANCES (UNLESS SPECIFIED)	DIMENSION STYLE	SCALE	DESIGN UNITS	THIRD ANGLE PROJECTION	
		$\nabla=0$ $\nabla C=0$	mm INCH 4 PLACES ± --- ± --- 3 PLACES ± --- ± --- 2 PLACES ± 0.2 ± --- 1 PLACE ± 0.2 ± --- ANGULAR ± 2 °	MM ONLY	3:1	METRIC	DRAWN BY DATE QWFANG 2006/09/05 CHECKED BY DATE IWANG 2006/09/05 APPROVED BY DATE JNCHEN 2006/09/05	TITLE COVER-DOWN FOR DISPLAYPORT
		DRAFT WHERE APPLICABLE MUST REMAIN WITHIN DIMENSIONS		MATERIAL NO.	DOCUMENT NO.	SHEET NO.		
		SIZE A3		47271-0005	SD-47271-005	1 OF 1		
MOLEX INCORPORATED								

9 8 7 6 5 4 3 2 1