

**PLEASE CHECK WWW.MOLEX.COM FOR LATEST PART INFORMATION**

**Part Number:** [5023070112](#)  
**Status:** **Active**  
**Overview:** [ctx crimp terminals](#)  
**Description:** CTX150 Female Terminal, Tin (Sn), 18-20 AWG D-Wind, Left Payoff, Grip Code M

**Documents:**

[Drawing \(PDF\)](#) [RoHS Certificate of Compliance \(PDF\)](#)

**General**

Product Family Crimp Terminals  
 Series [502307](#)  
 Crimp Quality Equipment Yes  
 Overview [ctx crimp terminals](#)  
 Product Name CTX150

**Physical**

Durability (mating cycles max) 10  
 Gender Female  
 Material - Metal Copper Alloy  
 Material - Plating Mating Tin  
 Material - Plating Termination Nickel  
 Packaging Type Reel  
 Termination Interface: Style Crimp or Compression  
 Wire Insulation Diameter 2.80mm  
 Wire Size AWG 18, 20  
 Wire Size mm<sup>2</sup> 0.75-1.00

**Electrical**

Current - Maximum per Contact 15A  
 Voltage - Maximum 250V

**Material Info**

**Reference - Drawing Numbers**

Packaging Specification PK-31301-053

**EU RoHS**  
**ELV and RoHS**  
**Compliant**  
**REACH SVHC**  
 Not Reviewed  
**Halogen-Free**  
**Status**  
**Not Reviewed**

**China RoHS**



**Need more information on product environmental compliance?**

Email [productcompliance@molex.com](mailto:productcompliance@molex.com)  
 For a multiple part number RoHS Certificate of Compliance, [click here](#)

Please visit the [Contact Us](#) section for any non-product compliance questions.

**Search Parts in this Series**

[502307Series](#)

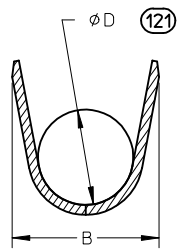
**Application Tooling | FAQ**

*Tooling specifications and manuals are found by selecting the products below. Crimp Height Specifications are then contained in the Application Tooling Specification document.*

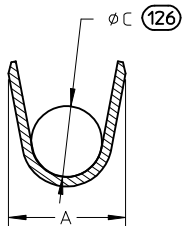
**Global**

Description	Product #
Extraction Tool for CTX150 Receptacle Crimp Terminal	<a href="#">0638134400</a>
Hand Crimp Tool for CTX 1.50mm Receptacle Terminal, 0.75, 0.85, 1.00 and 1.25mm <sup>2</sup>	<a href="#">0638194000</a>
FineAdjust™ Applicator for CTX150 Receptacle Terminals, .75mm, .85mm, 1.00mm & 1.25mm	<a href="#">0639010500</a>

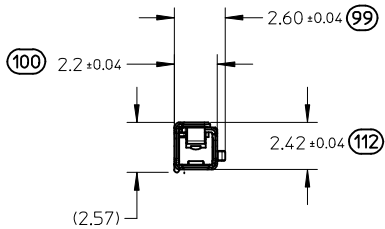
PART NUMBERS		GRIP CODE	WIRE GAUGE			PLATING	DIM A ±0.2	DIM B ±0.3	DIM ØC ±0.1	DIM ØD ±0.1
D-WIND (LEFT PAYOFF)	B-WIND (RIGHT PAYOFF)		ISO mm <sup>2</sup>	JASO mm <sup>2</sup>	SAE gauge					
502307-0111	502307-0211	S	0.35-0.50	0.30-0.50	22	TIN (Sn)	2	2.6	1	1.54
502307-0112	502307-0212	M	0.75-1.00	0.85-1.25	20/18		2.6	3.2	1.5	1.98
502307-0113	502307-0213	L	1.50-2.00	1.25-2.00	16/14		3.1	3.9	1.8	2.44



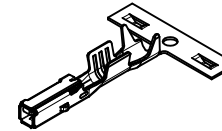
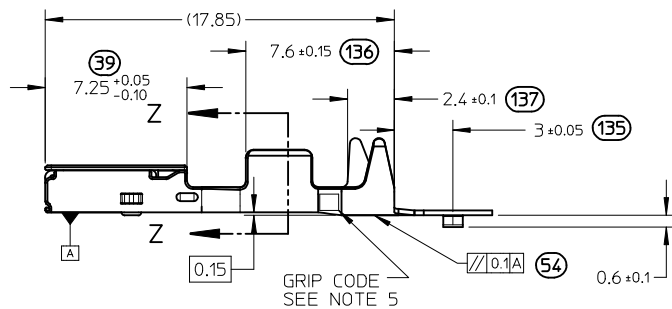
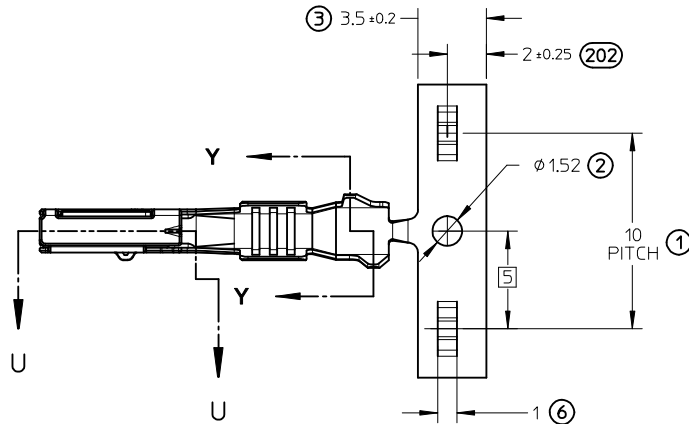
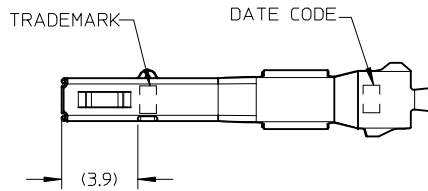
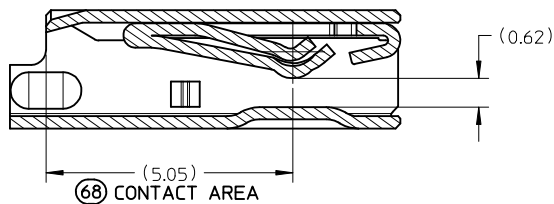
SECTION Y-Y  
SCALE 8:1  
INSULATION GRIP



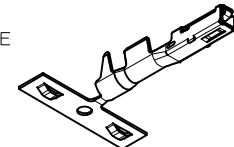
SECTION Z-Z  
Scale 8:1



SECTION U-U  
SCALE 10:1

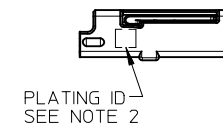


ISO VIEWS  
NOT TO SCALE



NOTES: (UNLESS OTHERWISE SPECIFIED)

1. MATERIAL: COPPER ALLOY (Sn PREPLATED)
2. PLATING MARK: TIN (Sn) - NO MARK
3. PACKAGING PER PK-31301-053
4. CRIMPING PER CS-502307-001
5. PROBING DOWN THROAT OF TERMINAL NOT ALLOWED



<b>ENTER DESCRIPTION</b> EC NO: UAU2010-0062 DRAWN: K.FERGUSON CHKD: D.NICHOLAS APPR: B.MOSER 2009/09/09 <b>B</b>	<b>QUALITY SYMBOLS</b> ▽=0 ▽=0	<b>GENERAL TOLERANCES (UNLESS SPECIFIED)</b>		<b>DIMENSION STYLE</b> <b>MM ONLY</b>		<b>SCALE</b> 1:1	<b>DESIGN UNITS</b> METRIC	THIRD ANGLE PROJECTION		
		mm	INCH	DRAWN BY	DATE	<b>CTX150 FEMALE TERMINAL</b>				
		4 PLACES ± ---	± ---	K.FERGUSON	10/25/2008					
		3 PLACES ± 0.08	± ---	CHECKED BY	DATE	<b>MOLEX INCORPORATED</b>				
2 PLACES ± 0.08	± ---	D.NICHOLAS	10/25/2008							
1 PLACE ± 0.08	± ---	APPROVED BY	DATE	<b>SD-502307-001</b>						
ANGULAR ± 1°		B.MOSER	10/22/2008							
<b>REVISION</b>		<b>MATERIAL NO.</b> SEE TABLE		<b>DOCUMENT NO.</b> SD-502307-001		<b>SHEET NO.</b> 1 OF 1		THIS DRAWING CONTAINS INFORMATION THAT IS PROPRIETARY TO MOLEX INCORPORATED AND SHOULD NOT BE USED WITHOUT WRITTEN PERMISSION		